



# Instant Pot IP-DUO80 V2 LED Display Replacement

How to replace the LED Display on the Instant Pot IP-DUO80 V2.

Written By: Kayla Meacham



---

## INTRODUCTION

The LED display is how you communicate with your Instant Pot. This guide will show you how to remove the display from the front of your device.

---



### TOOLS:

- [T15 Torx Screwdriver](#) (1)
  - [Phillips #1 Screwdriver](#) (1)
-

## Step 1 — LED Display



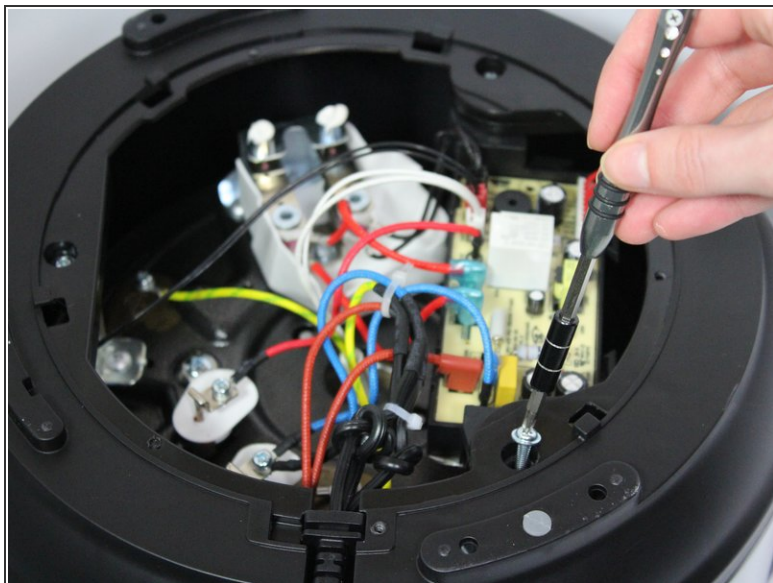
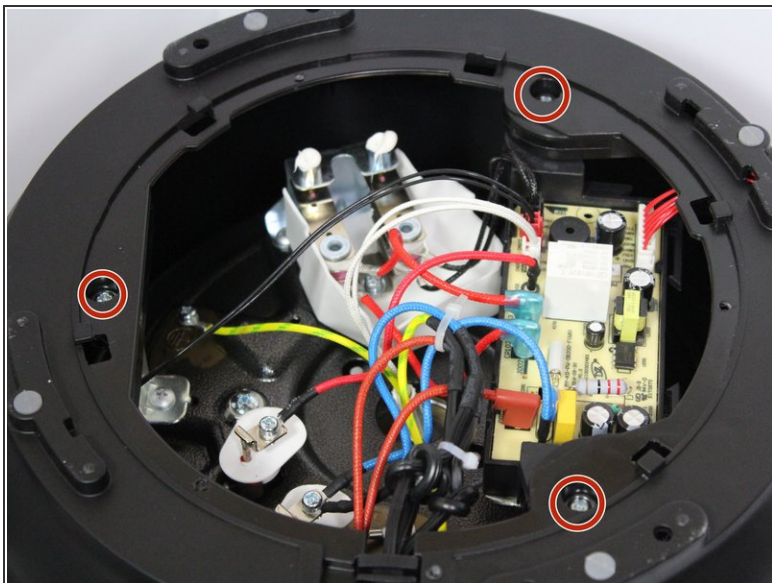
- Open the lid by turning it counter-clockwise and lifting up.
- Remove the inner pot.

## Step 2



- Turn the Instant Pot upside down.
- Remove the single 12-mm screw by using the T-15 head screwdriver and turning it counter-clockwise.
- Turn the plate counter-clockwise and lift it off the Instant Pot.

### Step 3



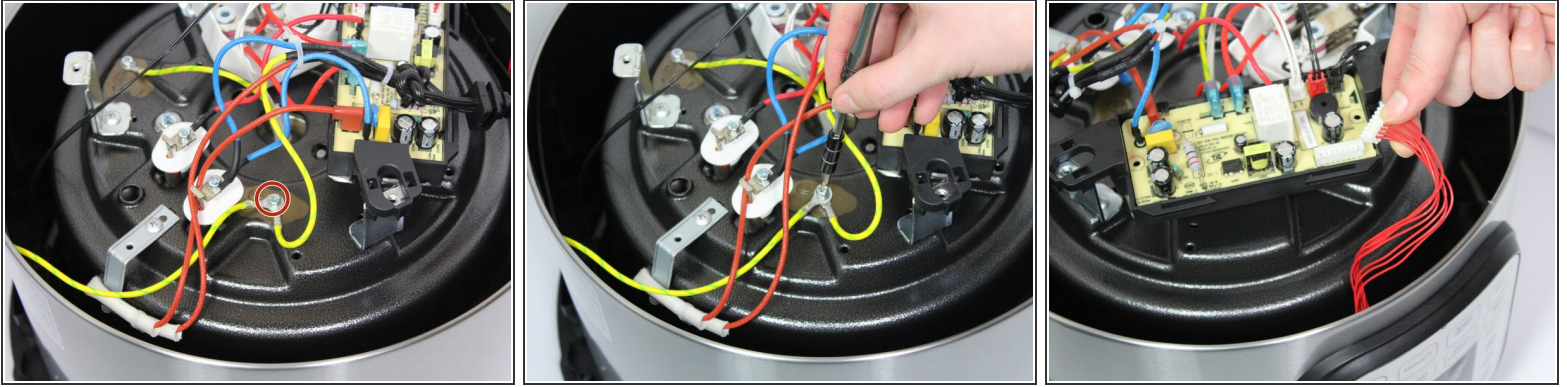
- Remove the three 19-mm screws in the black plastic base's edge using the PH-1 head screwdriver and twisting counter-clockwise.

### Step 4



- Pull the power cord out of its slot.
- Pull up on the edge of the black plastic base to remove the base.

## Step 5



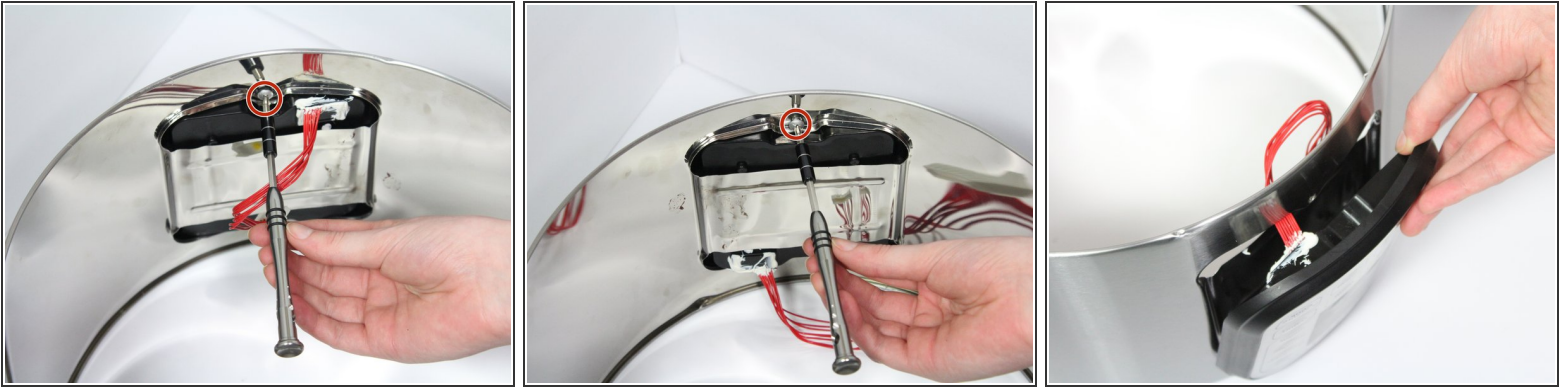
- Disconnect the two green-striped yellow wires that are connected onto the bottom of the heating element. Use a PH-1 head screwdriver and turn counter-clockwise to remove the 10-mm screw holding them in place.
- ⓘ Be careful not to lose the small washer that comes with this screw.
- Pull up on the cn101 connection to detach the LED display from the motherboard.

## Step 6



- Lift the silver outer shell off of the top black ring.

## Step 7



- Remove the two 10-mm screws connecting the LED display to the outer shell using a PH-1 head screwdriver and twisting counter clockwise.
- Pull out the LED display by pulling on it gently.

To reassemble your device, follow these instructions in reverse order.