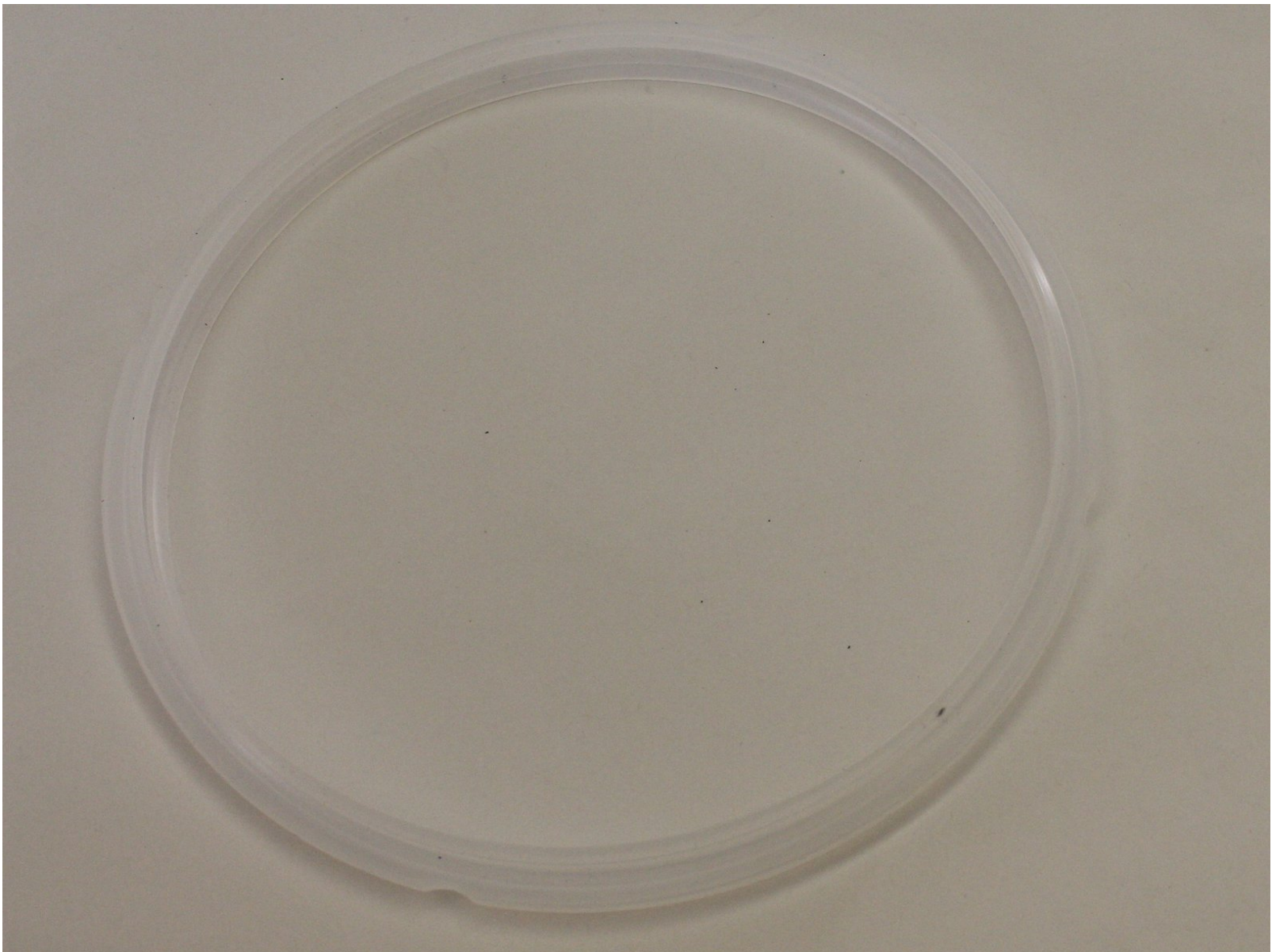




# Instant Pot Smart-60 Sealing Ring Replacement

Replace the sealing ring to stop lid leaks steam or liquid when Instant Pot Smart-60 is closed, or pressure is not building up when set to cook.

Written By: paola alvarez



---

## INTRODUCTION

The sealing ring can wear out over time and needs to be replaced. This guide will show step by step how to remove and replace the sealing ring of your Instant Pot Smart-60.

---



### PARTS:

- [Sealing Ring](#) (1)
-

## Step 1 — Sealing Ring



- Open the lid of the Instant Pot. Grasp the handle and rotate the lid counter-clockwise, then lift up to separate the lid from the base.

## Step 2



- Turn the lid upside down to access the sealing ring.
- Push up on the bottom part of the ring to pop it out of the support.

### Step 3



- Remove by gently pulling from the top of the sealing ring.

To reassemble your device, follow these instructions in reverse order.