



Instax Mini 90 Film Cartridge Replacement

This guide will show you how to load a new film cartridge into your camera.

Written By: Elliott Tegan-Tawney



INTRODUCTION

A new Instax Mini 90 Film Cartridge is required for this process. The right size for this camera is 86mm x 54mm. This replacement is simple, but if you do not have the proper film cartridge, you will get an error notification from the camera. To get the most out of your film, keep it in a cool, dry place, and refrain from removing the cartridge while there are still exposures left on it.



PARTS:

- [Instax Mini 90 Film Cartridge](#) (1)

Step 1 — Film Cartridge



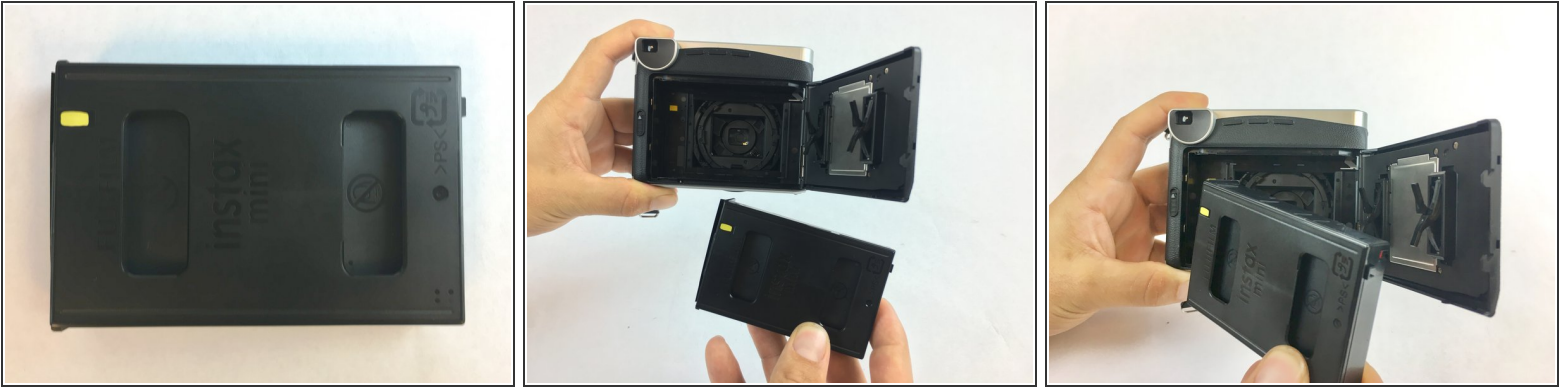
- Turn ON the camera, and flip it over so that the back cover is visible.

Step 2



- Unlock the back cover. It should automatically spring open. If there is an old film cartridge loaded in the camera, remove it.

Step 3



- Unwrap the new film cartridge, taking care to not touch the film inside. Only handle the film cartridge by its plastic shell.
- Line up the small, yellow line on the cartridge with the corresponding yellow line inside the camera. The yellow line on the cartridge should be facing up, away from the camera.

Step 4



- Close the back cover. The film covering should eject automatically.

To reassemble your device, follow these instructions in reverse order.