



# Internal Battery Circuit Connector

This guide will show you how to install the internal battery circuit connectors

Written By: Nick Oleskowicz



---

## INTRODUCTION

This guide will teach the reader to install a new Battery Circuit Connector into the battery case. This may need to be done if the batteries are not delivering electricity into the camera.

---



### TOOLS:

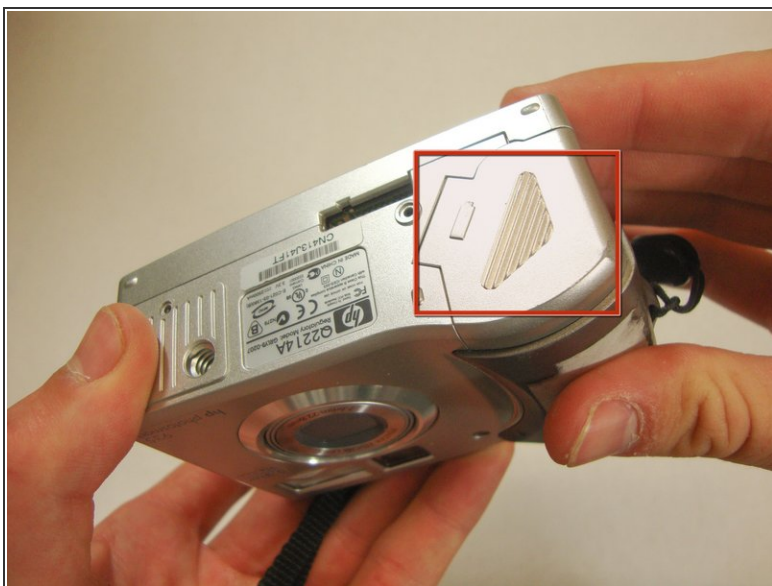
- [64 Bit Driver Kit](#) (1)
-

## Step 1 — Batteries



- Flip the camera over so the bottom is facing you.

## Step 2



- Open the cover on the bottom by sliding it in the direction of the arrow.



### Step 3



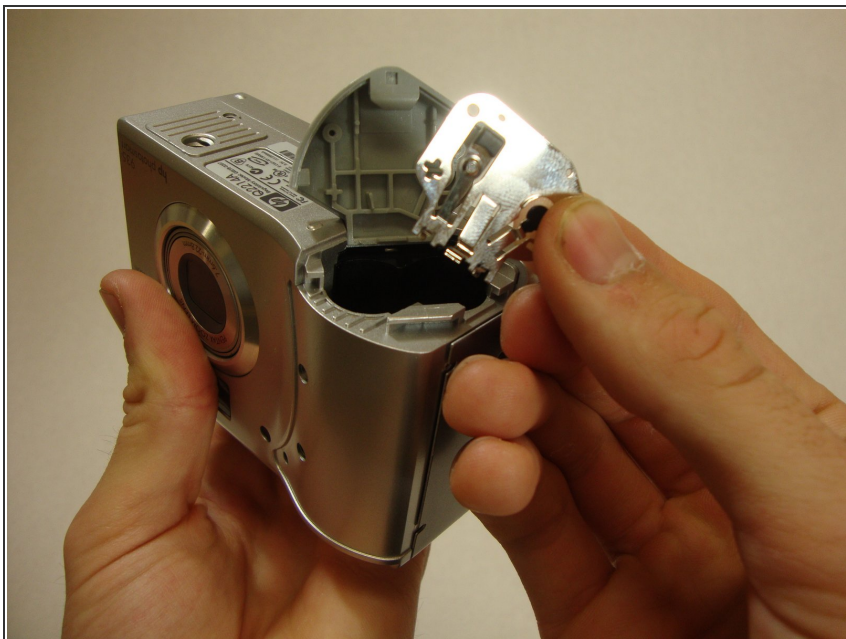
- Remove the batteries by pulling up on the top with your fingers.

### Step 4 — Internal Battery Circuit Connector



- Remove the three screws from the circuit connector.

## Step 5



- Remove the connector from the battery holder door.

To reassemble your device, follow these instructions in reverse order.