



Ivation IVWPDC20Y Display Replacement

Ivation IVWPDC20Y Display Replacement

Written By: Alex



INTRODUCTION

Use this guide to replace the main rear-facing screen of the Ivation IVWPDC20Y camera.



TOOLS:

- [T6 Torx Screwdriver](#) (1)
 - [Phillips #00 Screwdriver](#) (1)
 - [Heavy-Duty Spudger](#) (1)
-

Step 1 — Display



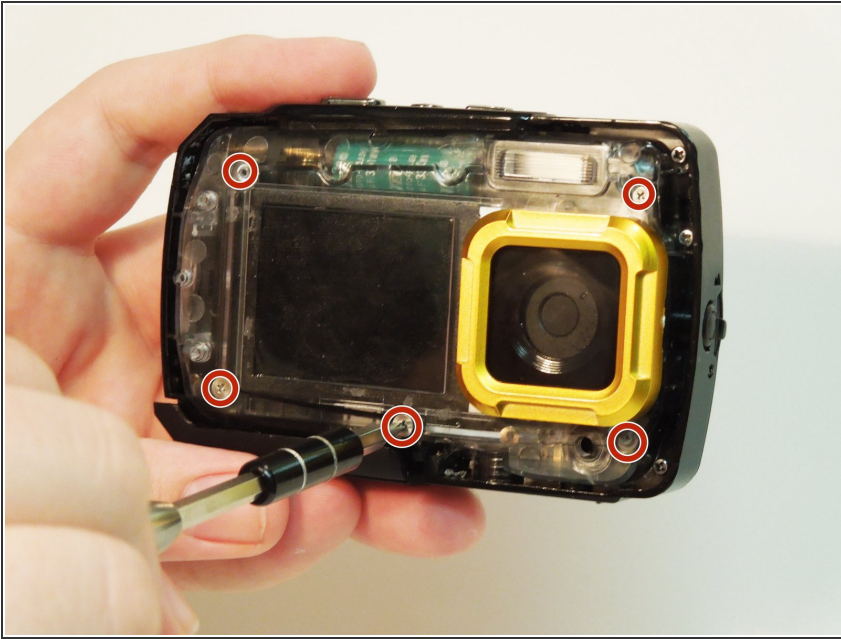
- With the H2.0 bit screwdriver, remove the two screws on the yellow waterproof cover

Step 2



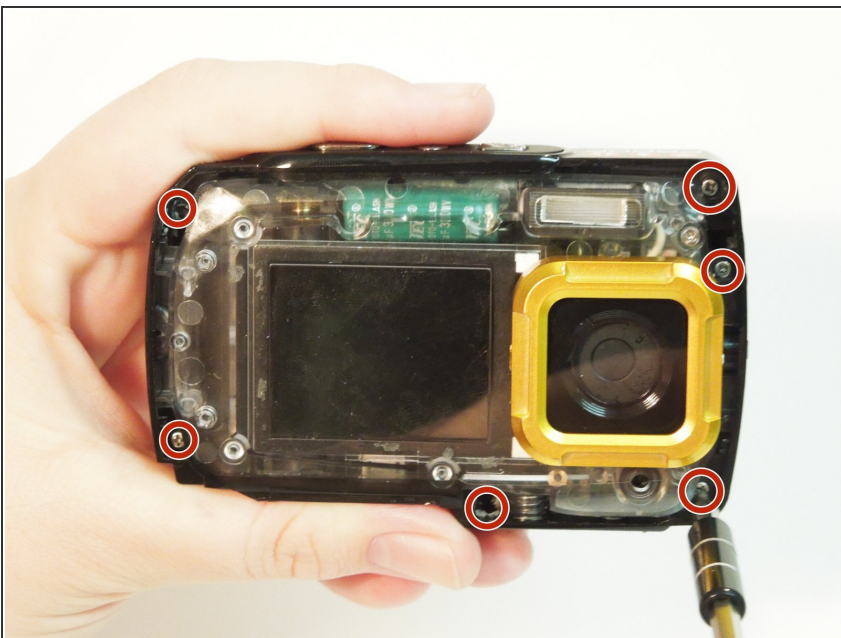
- Apply a plastic opening tool to each of the corners and gently remove the casing
- ⓘ The front casing is held down by adhesive and may require additional work to remove
- ⚠ Apply just enough force to undo the inner latches to make sure not to damage the waterproof seal

Step 3



- Remove the five silver screws from the inner casing using the PH00 screwdriver bit.

Step 4



- Remove the six screws from the edge of the clear inner casing with the PH00 screwdriver bit.
- ⚠ These screws are very small and easy to strip so apply consistent pressure when removing them

Step 5



- Pry off back outer casing using the black spudger or the blue prying tools.

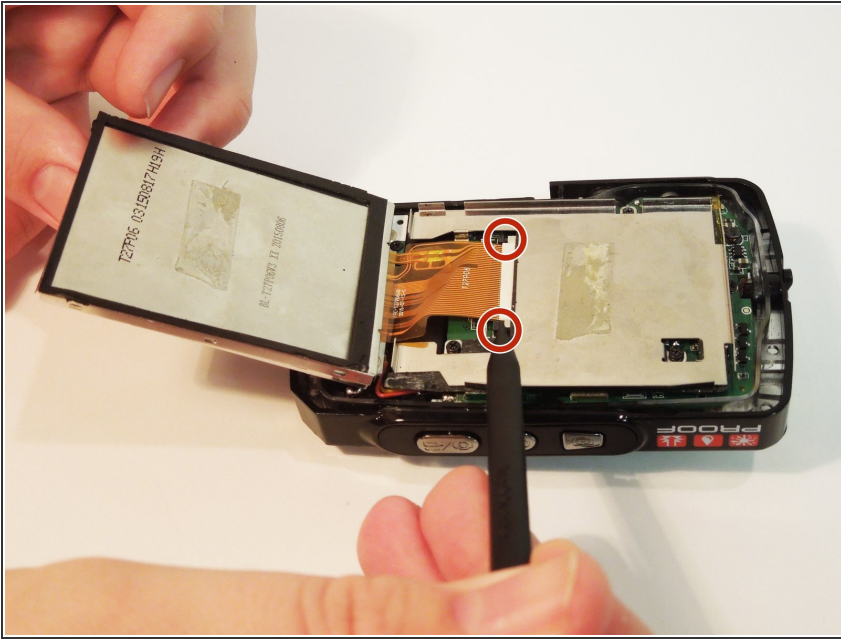
Step 6



- Carefully remove the screen from the silver casing using a prying tool or the black spudger.

⚠ There is adhesive in the center of the screen, be sure not to bend it when applying pressure.

Step 7



- Using the poker end of the spudger push gently on the black pegs holding the orange tape in place.
- ⓘ Screen and orange tape should slip out as a whole.

To reassemble your device, follow these instructions in reverse order.