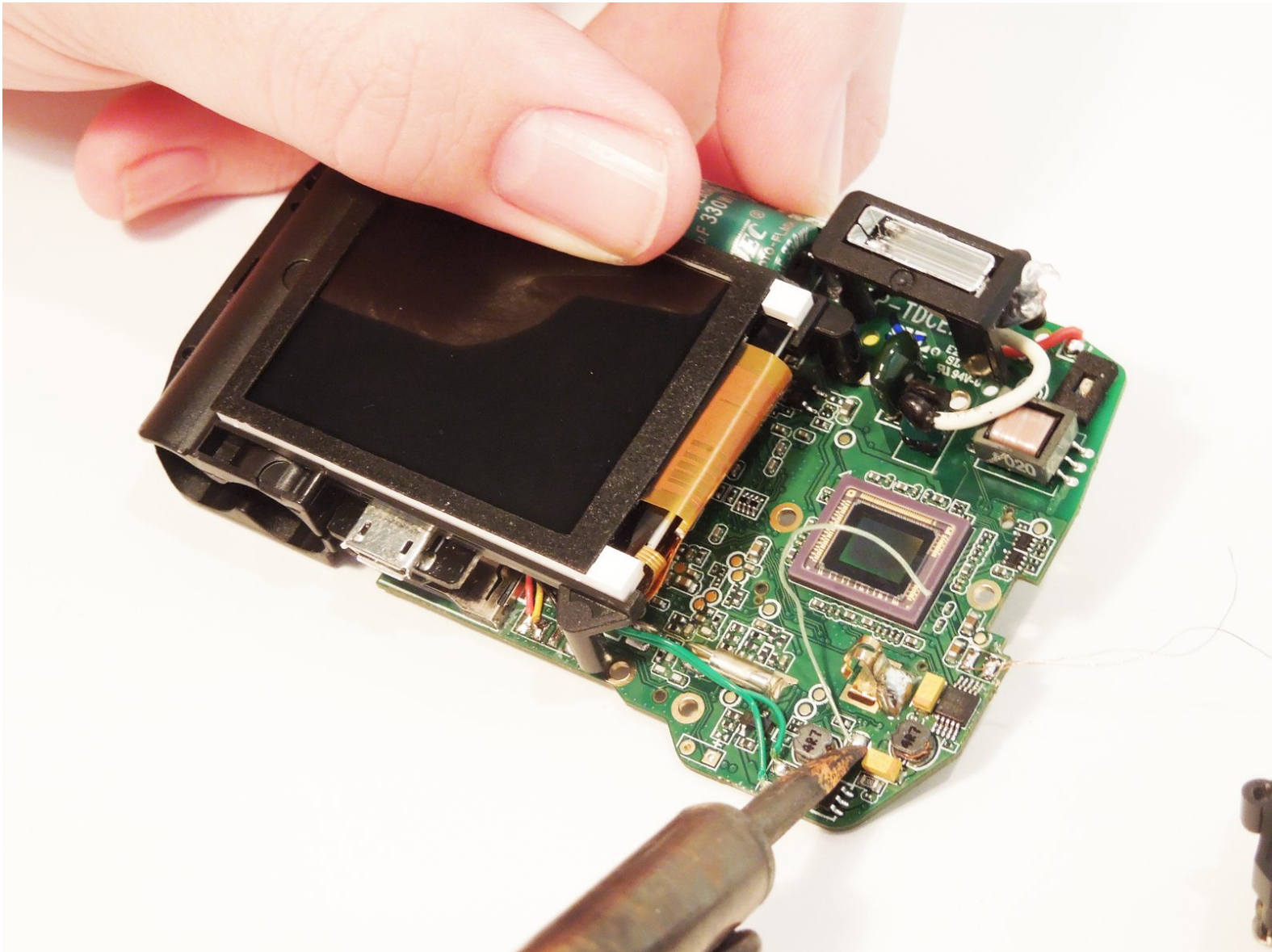




# Ivation IVWPDC20Y Lens Assembly Replacement

Ivation IVWPDC20Y Repair Lens Replacement

Written By: Jack Schlandt



# INTRODUCTION

This guide will show you how to replace a faulty lens unit for this camera.



## TOOLS:

- [T6 Torx Screwdriver](#) (1)
  - [Phillips #00 Screwdriver](#) (1)
  - [Heavy-Duty Spudger](#) (1)
  - [Soldering Iron](#) (1)
-

## Step 1 — Lens Assembly



- With the H2.0 bit screwdriver, remove the two screws on the yellow waterproof cover

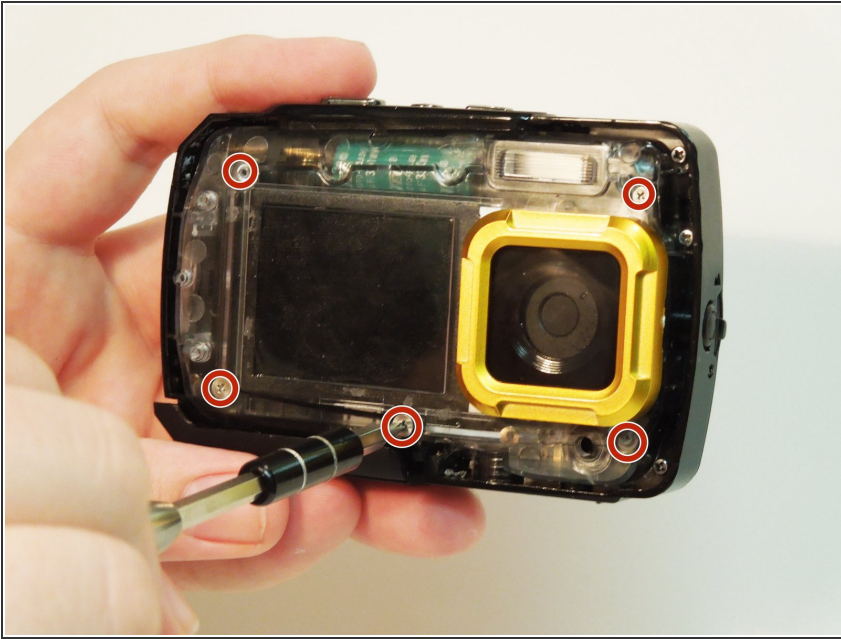
## Step 2



- Apply a plastic opening tool to each of the corners and gently remove the casing
- ⓘ The front casing is held down by adhesive and may require additional work to remove
- ⚠ Apply just enough force to undo the inner latches to make sure not to damage the waterproof seal

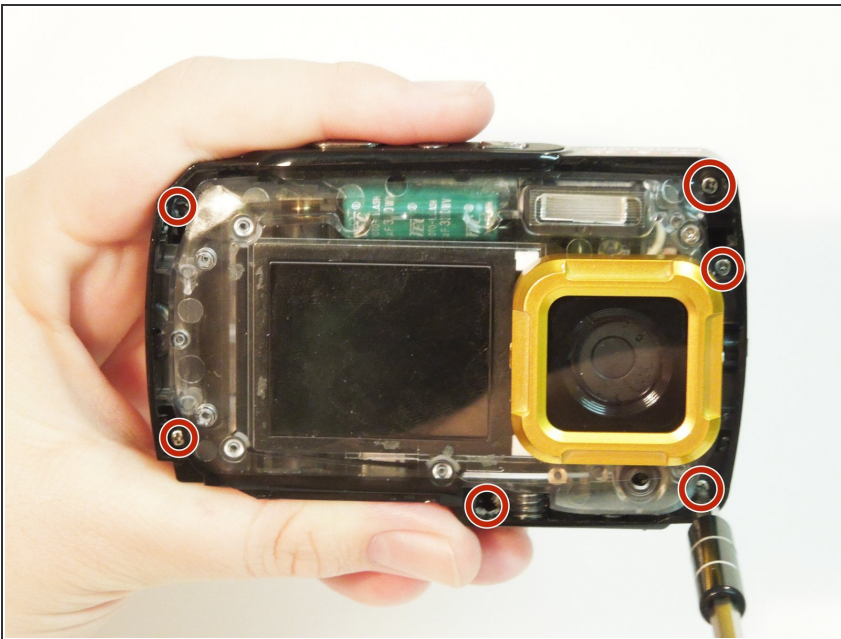


### Step 3



- Remove the five silver screws from the inner casing using the PH00 screwdriver bit

### Step 4



- Remove the six screws from the edge of the clear inner casing with the PH00 screwdriver bit
- ⚠ These screws are very small and easy to strip so apply consistent pressure when removing them

## Step 5



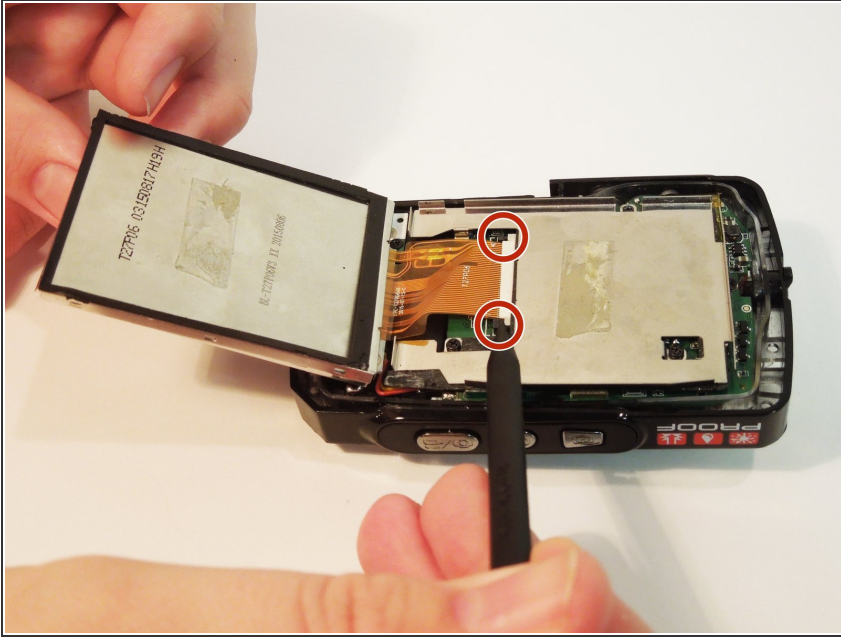
- Pry off back outer casing using the black spudger or the blue prying tools

## Step 6



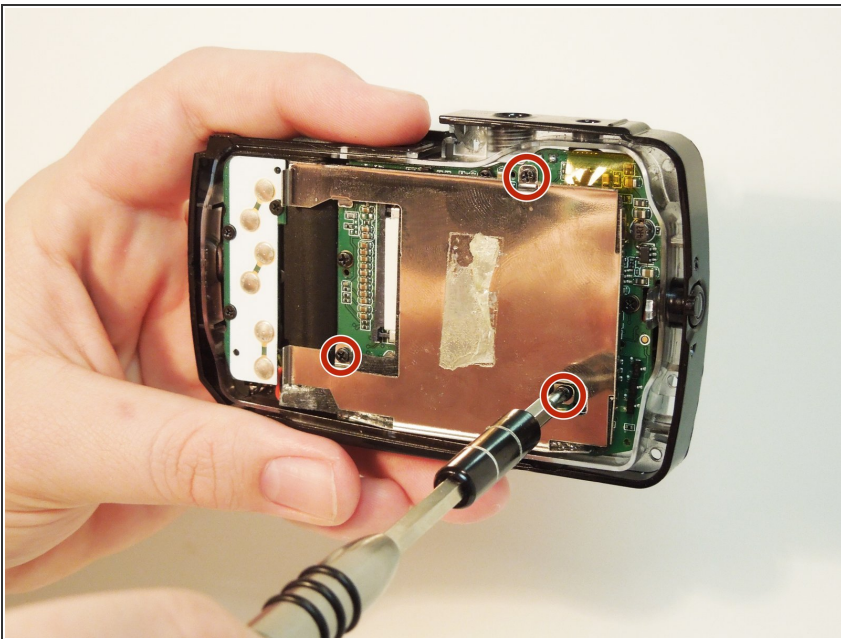
- Carefully remove the screen from the silver casing using a prying tool or the black spudger
- ⚠ There is adhesive in the center of the screen, be sure not to bend it when applying pressure

## Step 7



- Using the poker end of the spudger push gently on the black pegs holding the orange tape in place
- ⓘ Screen and orange tape should slip out as a whole

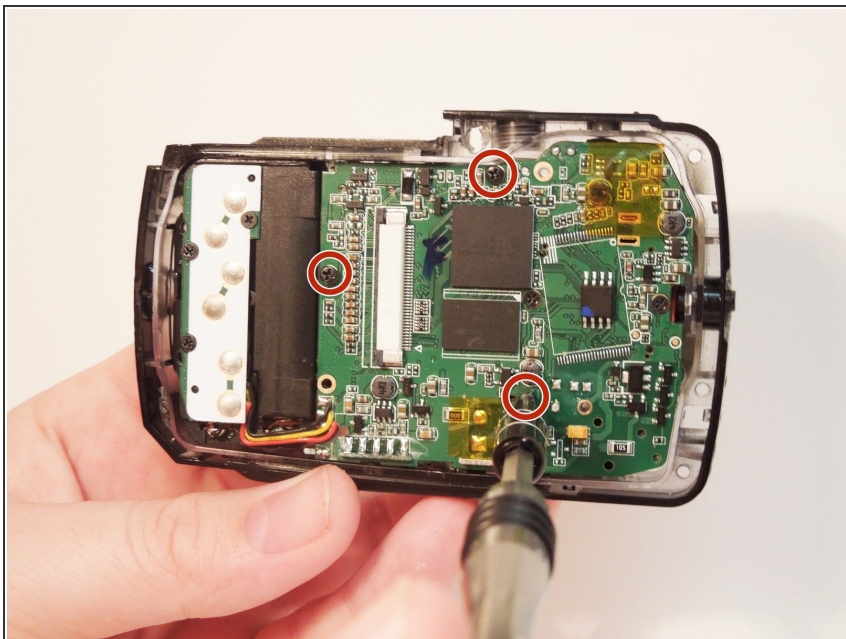
## Step 8



- Remove three screws holding the silver screen casing to the motherboard using the PH00 bit screwdriver



## Step 9



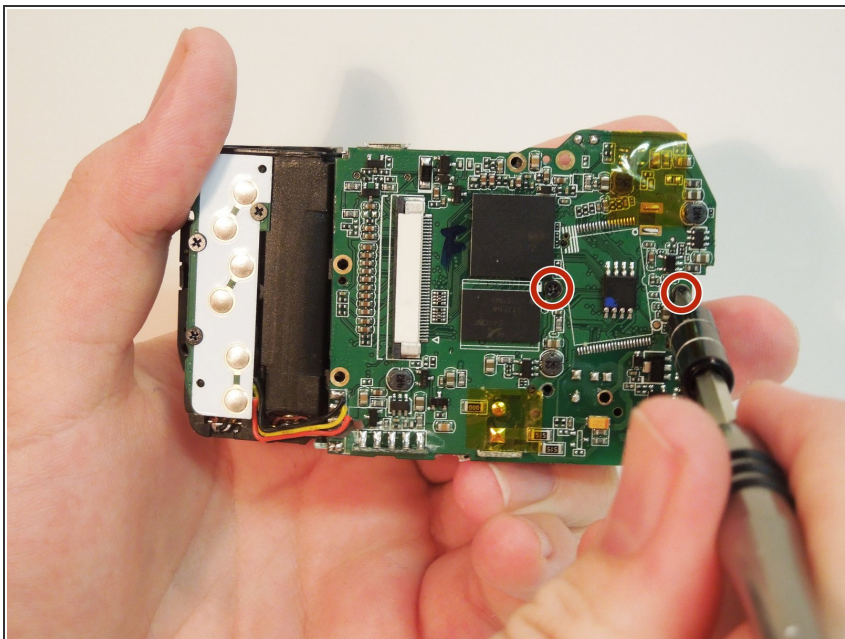
- Remove three screws holding the motherboard into the casing using the PH00 bit screwdriver

## Step 10



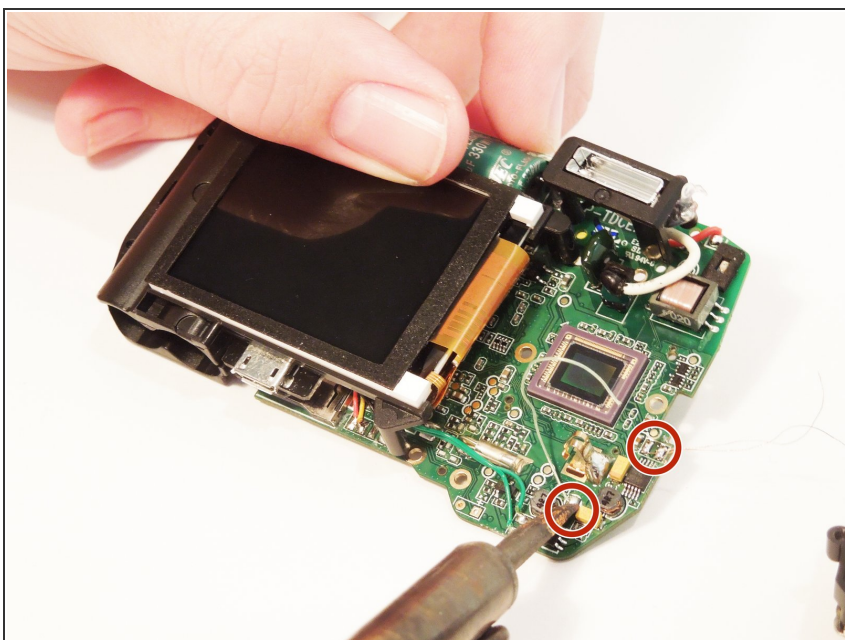
- Gently lift the corner of the motherboard out
- ⓘ Everything should come out as one component free of the casing

## Step 11



- Remove the two screws holding the lens assembly to the motherboard using the PH00 bit screwdriver

## Step 12



- Remove the soldering on the 3 wires that are connected to the lens unit

To reassemble your device, follow these instructions in reverse order.