



JBL Charge 2 Battery Replacement

Replacing a battery to restore power to the device.

Written By: Mauzor Ilonzo



INTRODUCTION

How to disassemble the JBL Charge 2 for a battery replacement.



TOOLS:

- [iFixit Opening Tools](#) (1)
- [Metal Spudger](#) (1)
- [Phillips #1 Screwdriver](#) (1)



PARTS:

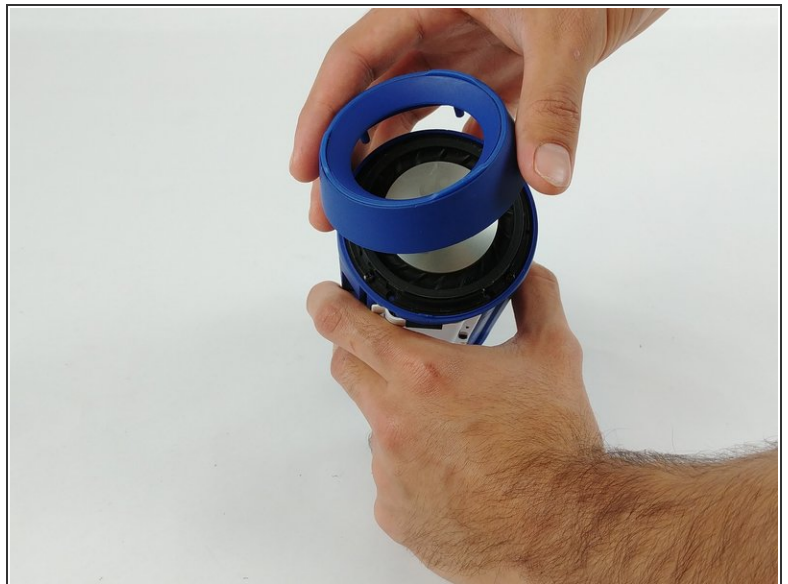
- [JBL Charge 2 Replacement Battery](#) (1)

Step 1 — Battery



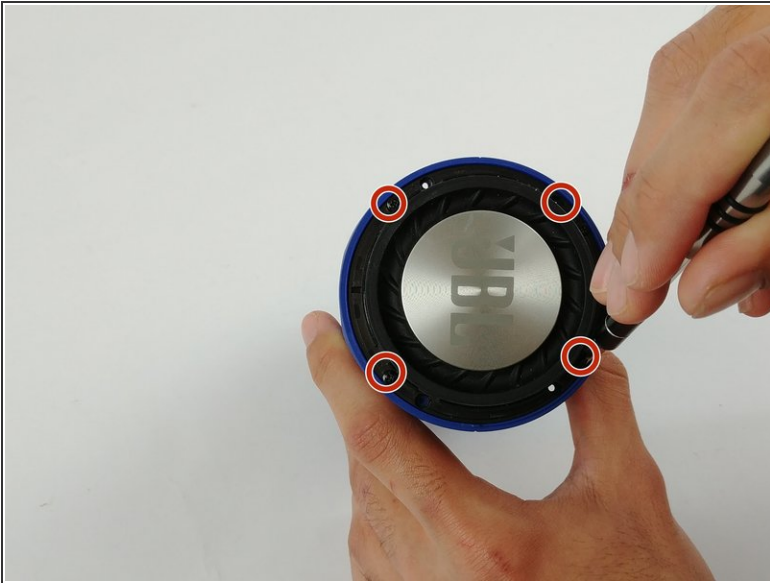
- Remove the screen cover from the speaker using a metal spudger.

Step 2



- Using a Phillips #1 screwdriver (PH1), remove the (4) four 8mm screws.
- Remove the end cap of the device. Repeat the same process to remove the other end cap.

Step 3



- To remove the end diaphragms, use a Phillips #1 screwdriver (PH1) and remove the (4) four 6mm screws.
- Twist off the end cap and remove them from the device.

Step 4



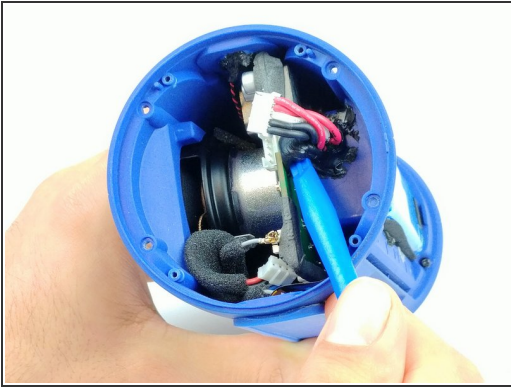
- Use a Phillips #1 screwdriver (PH1) to remove the (2) two screws from the battery cover.
- Pry away the plastic battery cover with a plastic spudger.

Step 5



- Disconnect the battery connector with a plastic opening tool and wiggle the connector free.

Step 6



- Scrape the battery wire sealant off with a plastic opening tool, and ensure it is free of the body of the speaker and wires.
- Slide the battery free.

To reassemble your device, follow these instructions in reverse order.