



JBL Charge 2 Plus Bottom USB Ports and Aux Port Replacement

Replace the Bottom usb ports and aux port

Written By: John Reynolds



INTRODUCTION

This guide can be used to replace your USB ports and aux cable.



TOOLS:

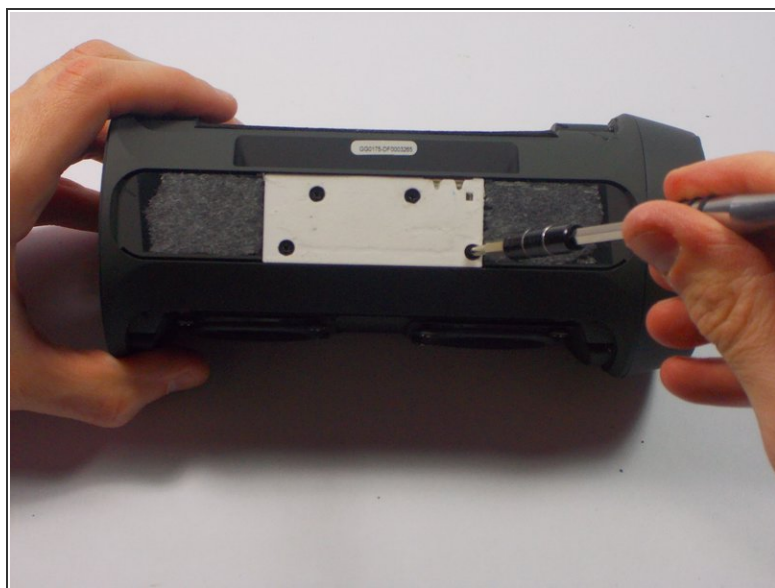
- [Metal Spudger](#) (1)
 - [Phillips #1 Screwdriver](#) (1)
 - [iFixit Opening Tools](#) (1)
-

Step 1 — Bottom usb ports and aux port



- Flip the device so the bottom is facing you.
- Remove the bottom pad with a nylon or metal spudger.

Step 2



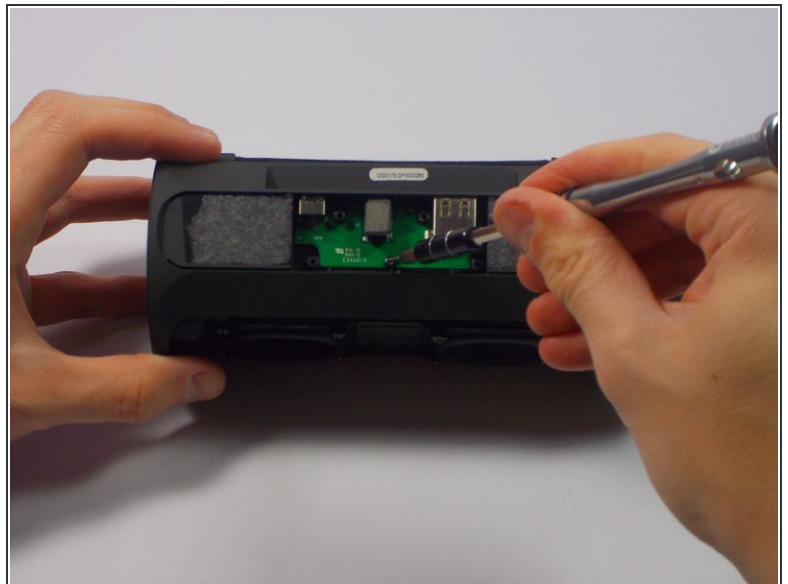
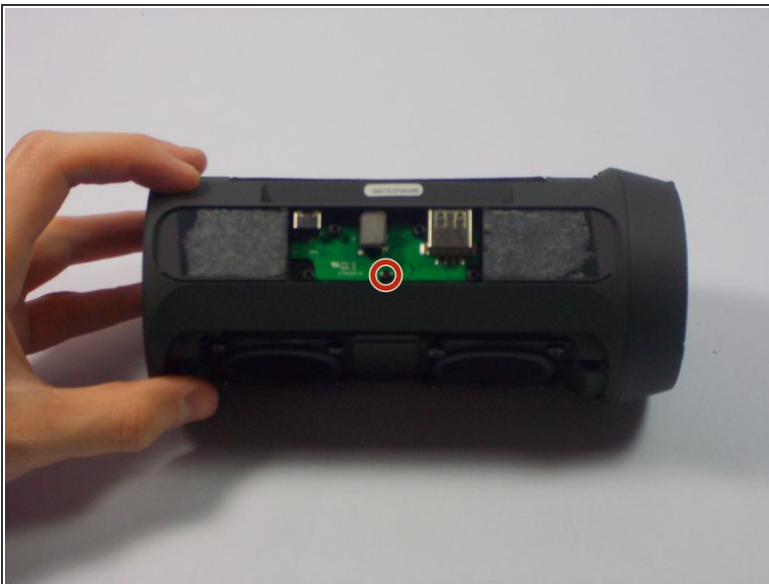
- Remove the 4 screws that hold the white cover.

Step 3



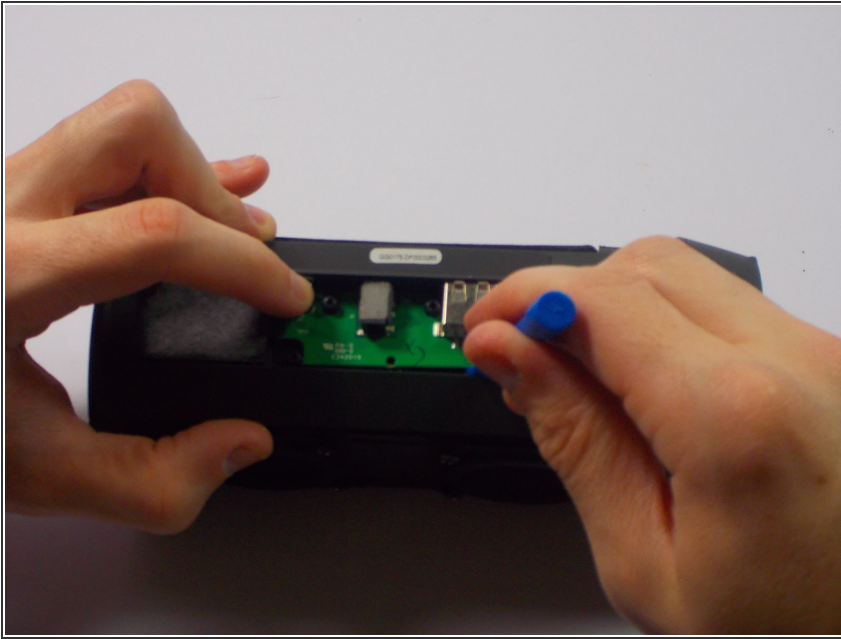
- Slide under the cover and remove it.

Step 4



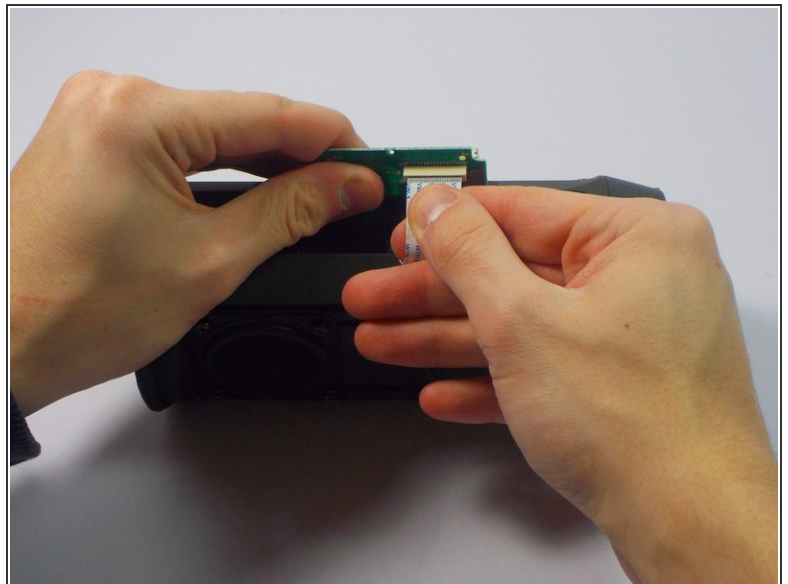
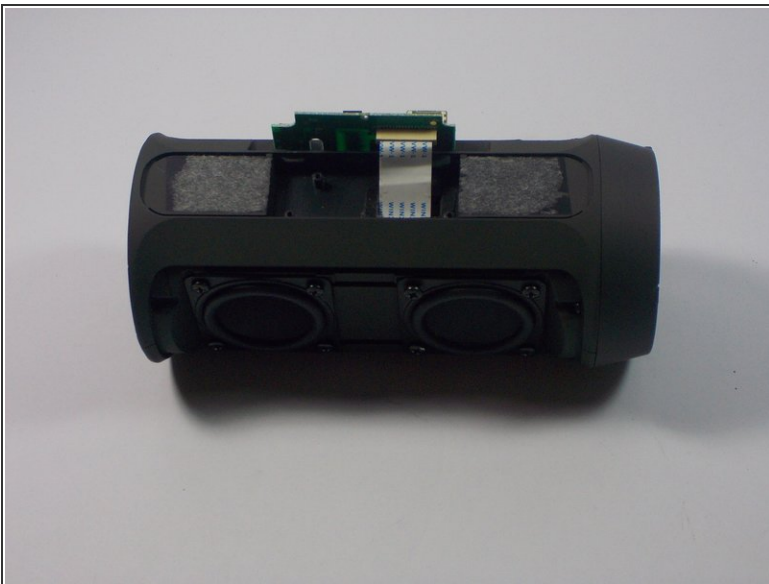
- Remove the one screw holding the circuit board.

Step 5



- Pry the board with the plastic opening tool.

Step 6



- Slide the ribbon gently out of the connector.

To reassemble your device, follow these instructions in reverse order.