



JBL Charge 2 Plus full disassembly

full disassembly

Written By: Pavel Amelyanenko

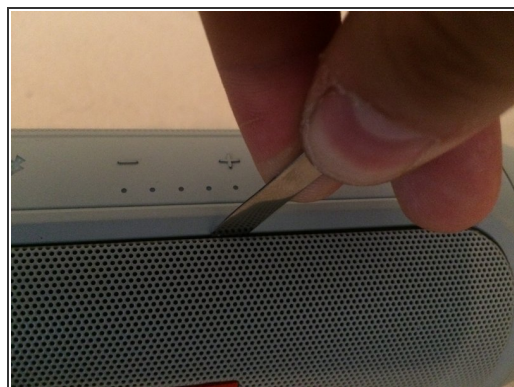
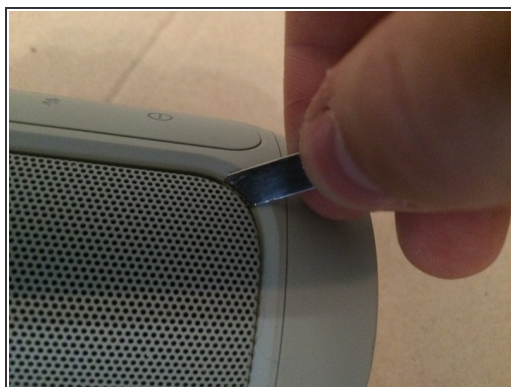
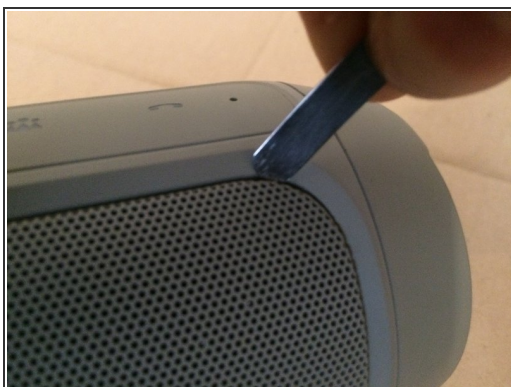


Step 1 — main board



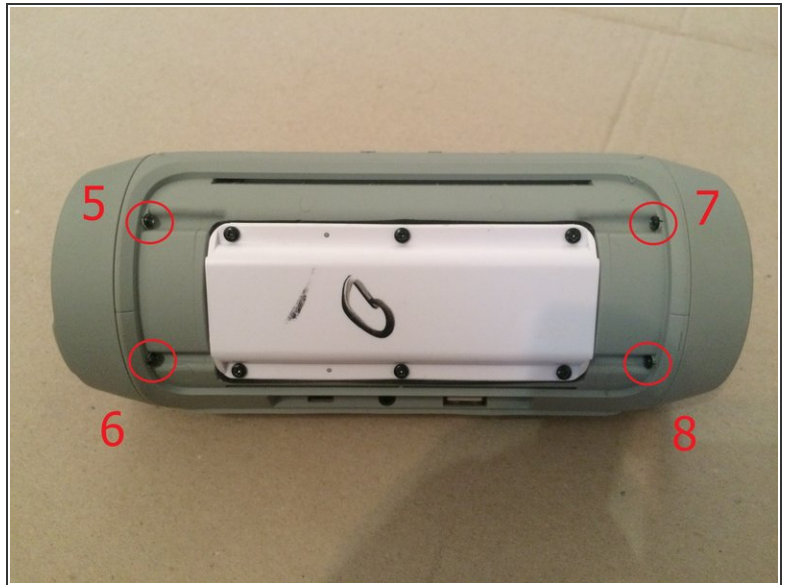
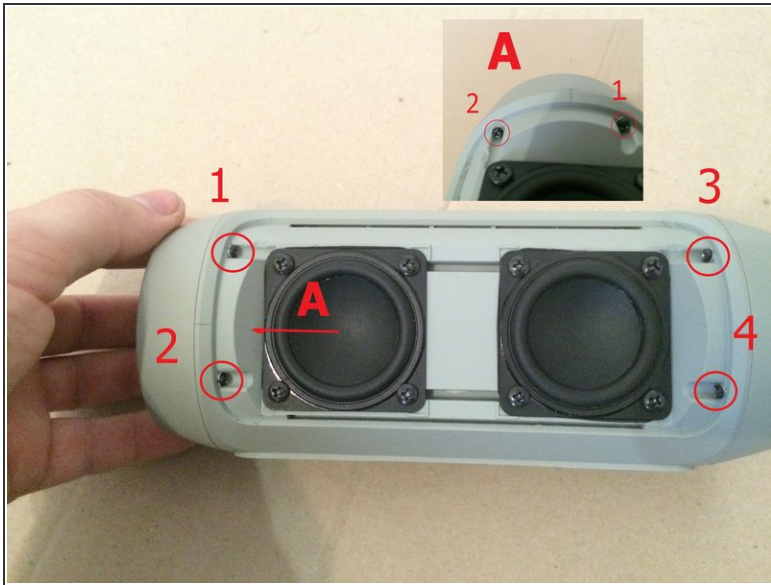
- Put in the wisdom here.

Step 2



- Put in the wisdom here.

Step 3



- Put in the wisdom here.

Step 4



- Put in the wisdom here.

Step 5



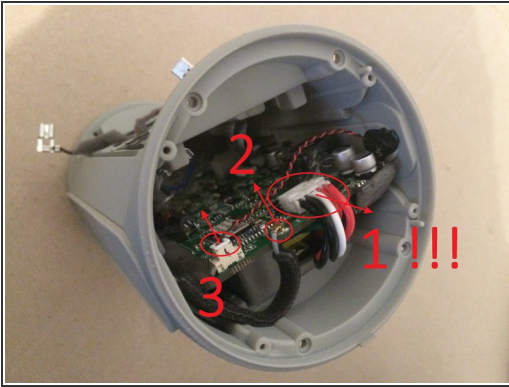
- Put in the wisdom here.

Step 6



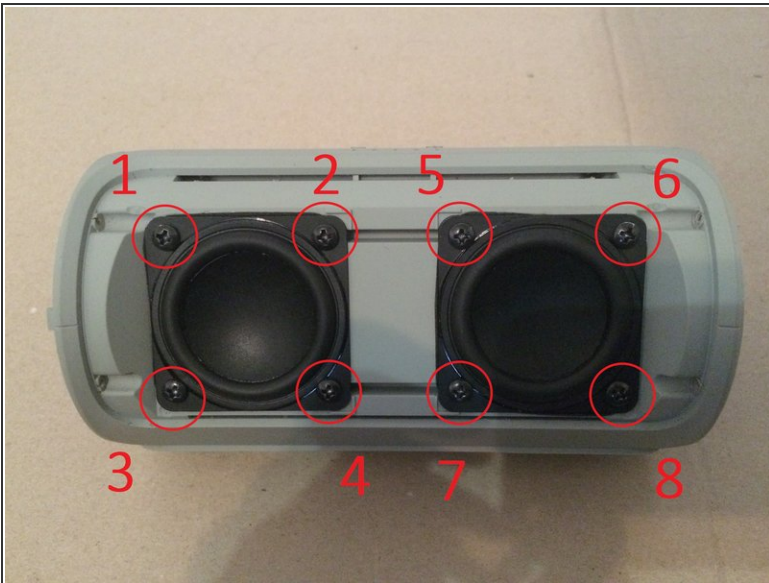
- Put in the wisdom here.

Step 7



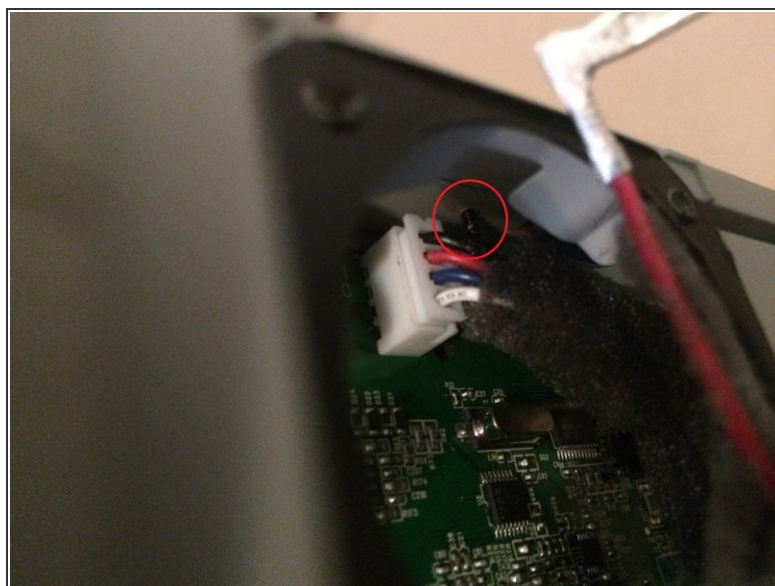
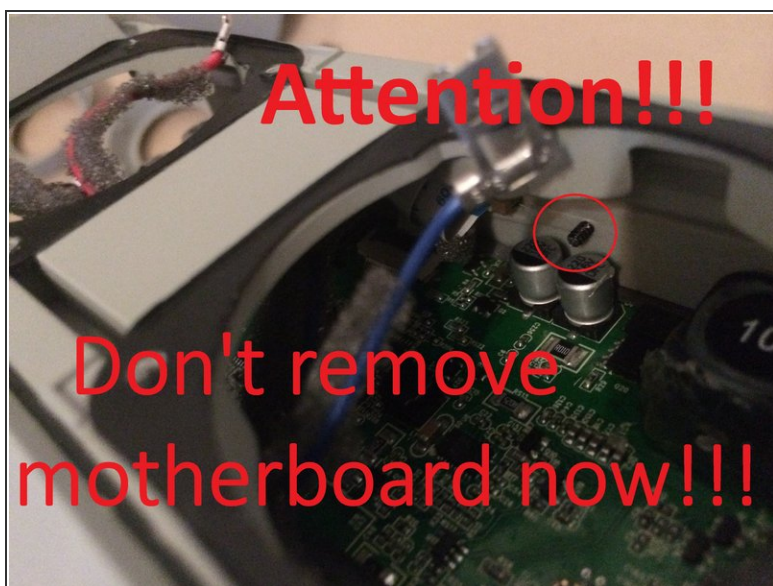
- Put in the wisdom here.

Step 8



- Put in the wisdom here.

Step 9



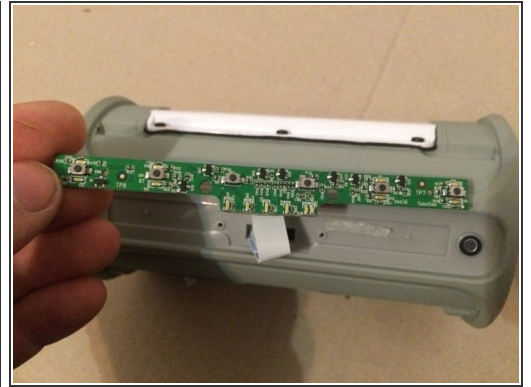
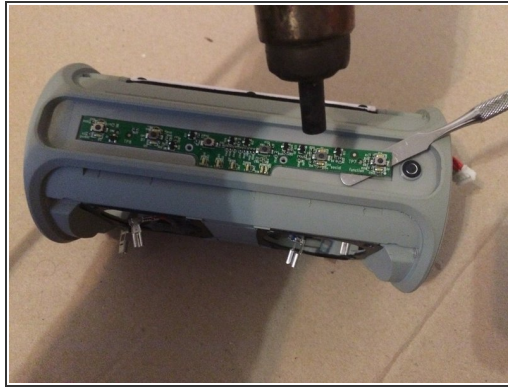
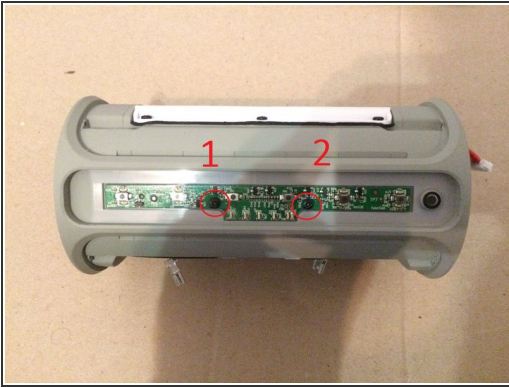
- Put in the wisdom here.

Step 10



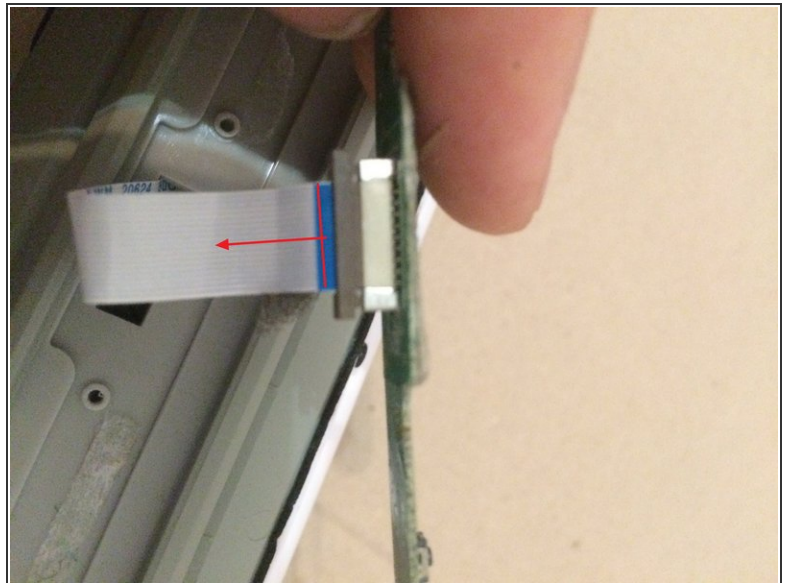
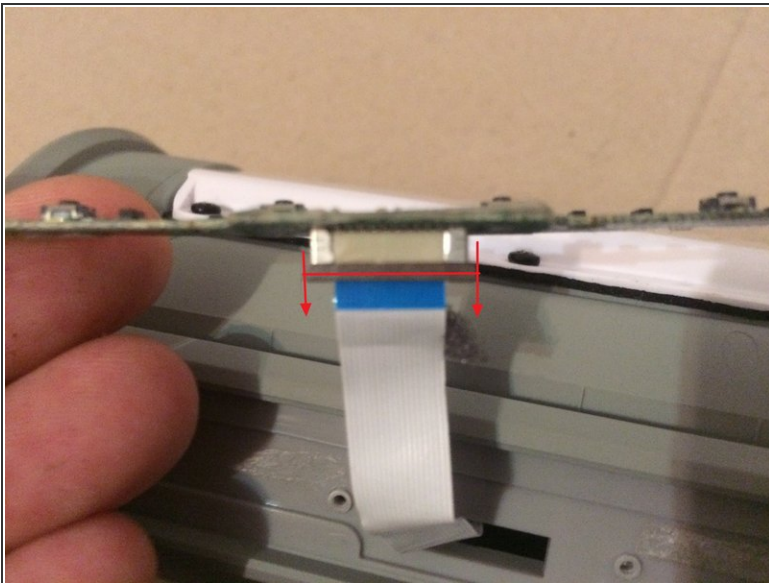
- Put in the wisdom here.

Step 11



- Put in the wisdom here.

Step 12



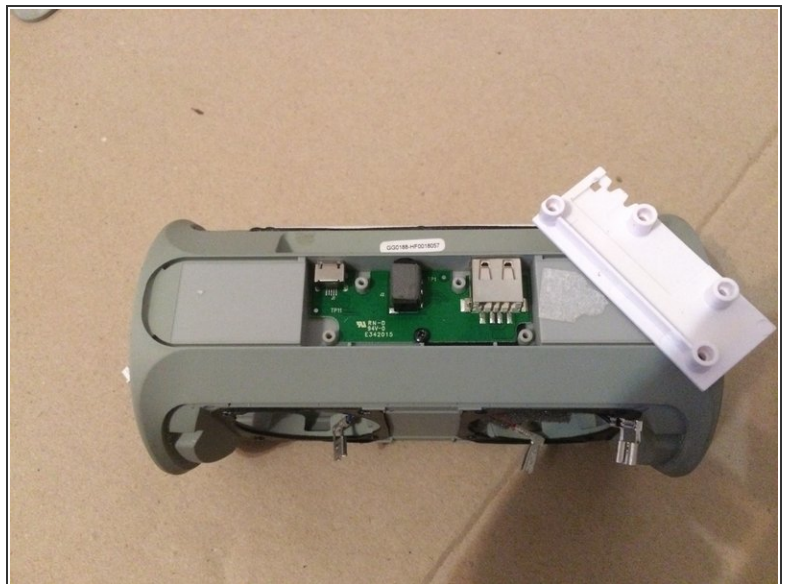
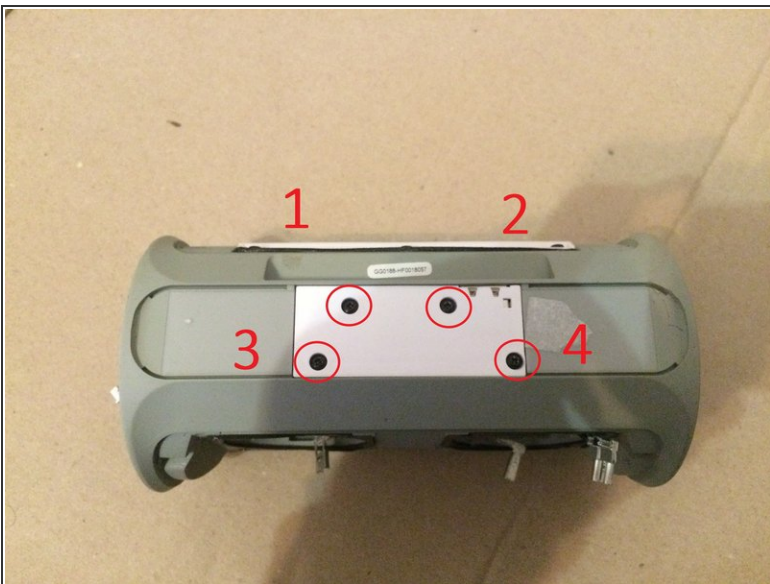
- Put in the wisdom here.

Step 13



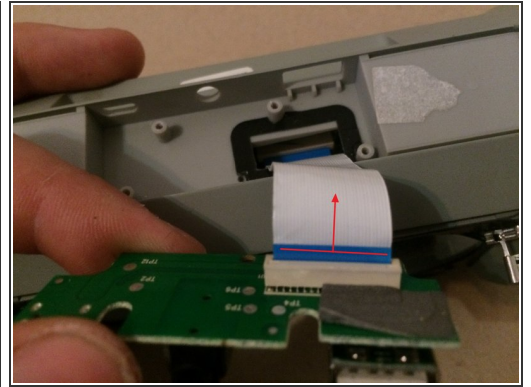
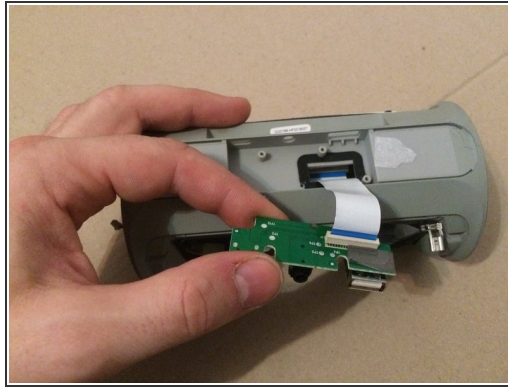
- Put in the wisdom here.

Step 14



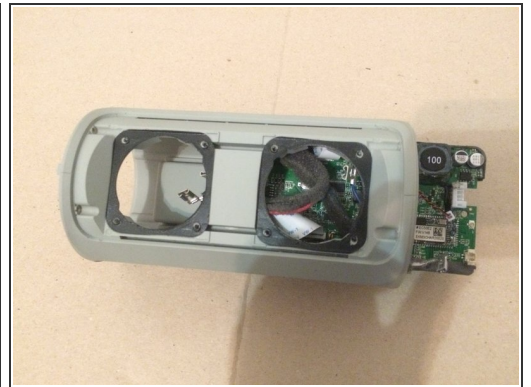
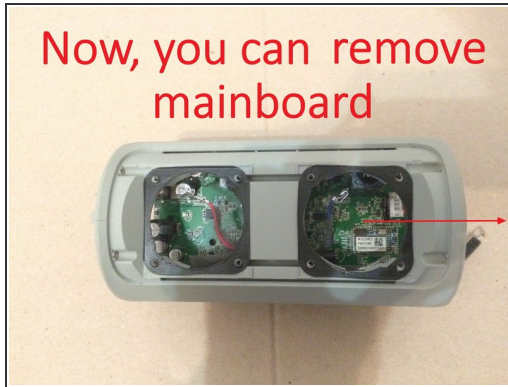
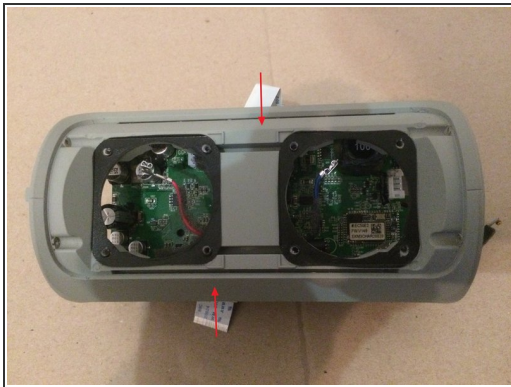
- Put in the wisdom here.

Step 15



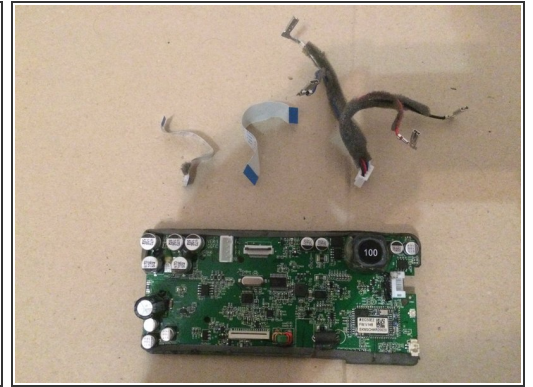
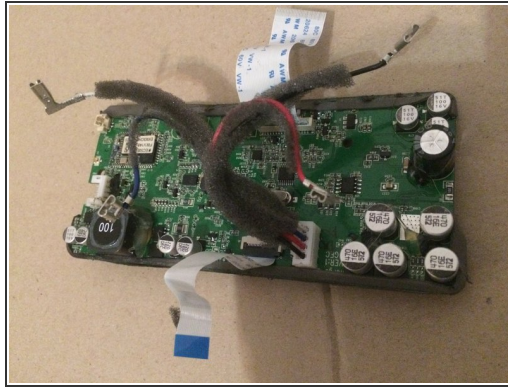
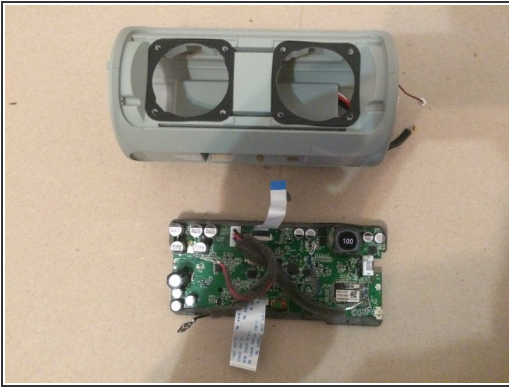
- Put in the wisdom here.

Step 16



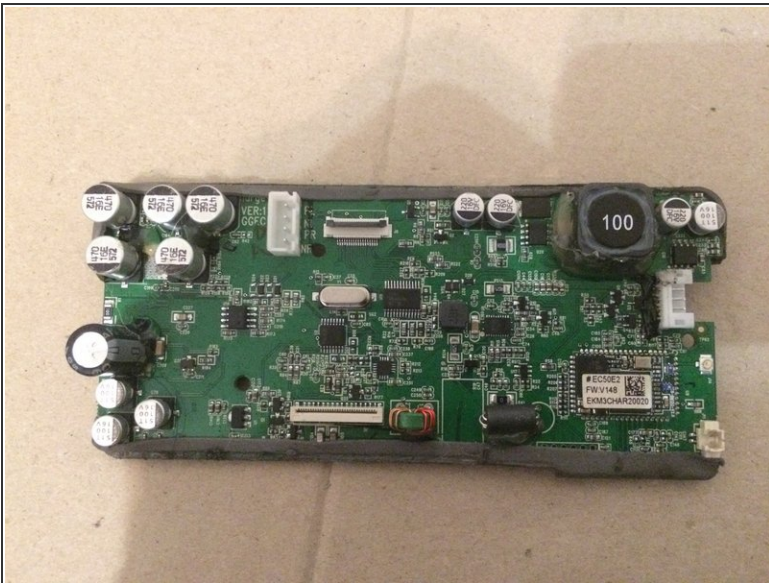
- Put in the wisdom here.

Step 17



- Put in the wisdom here.

Step 18



- Put in the wisdom here.

To reassemble the device, follow these instructions in reverse order.