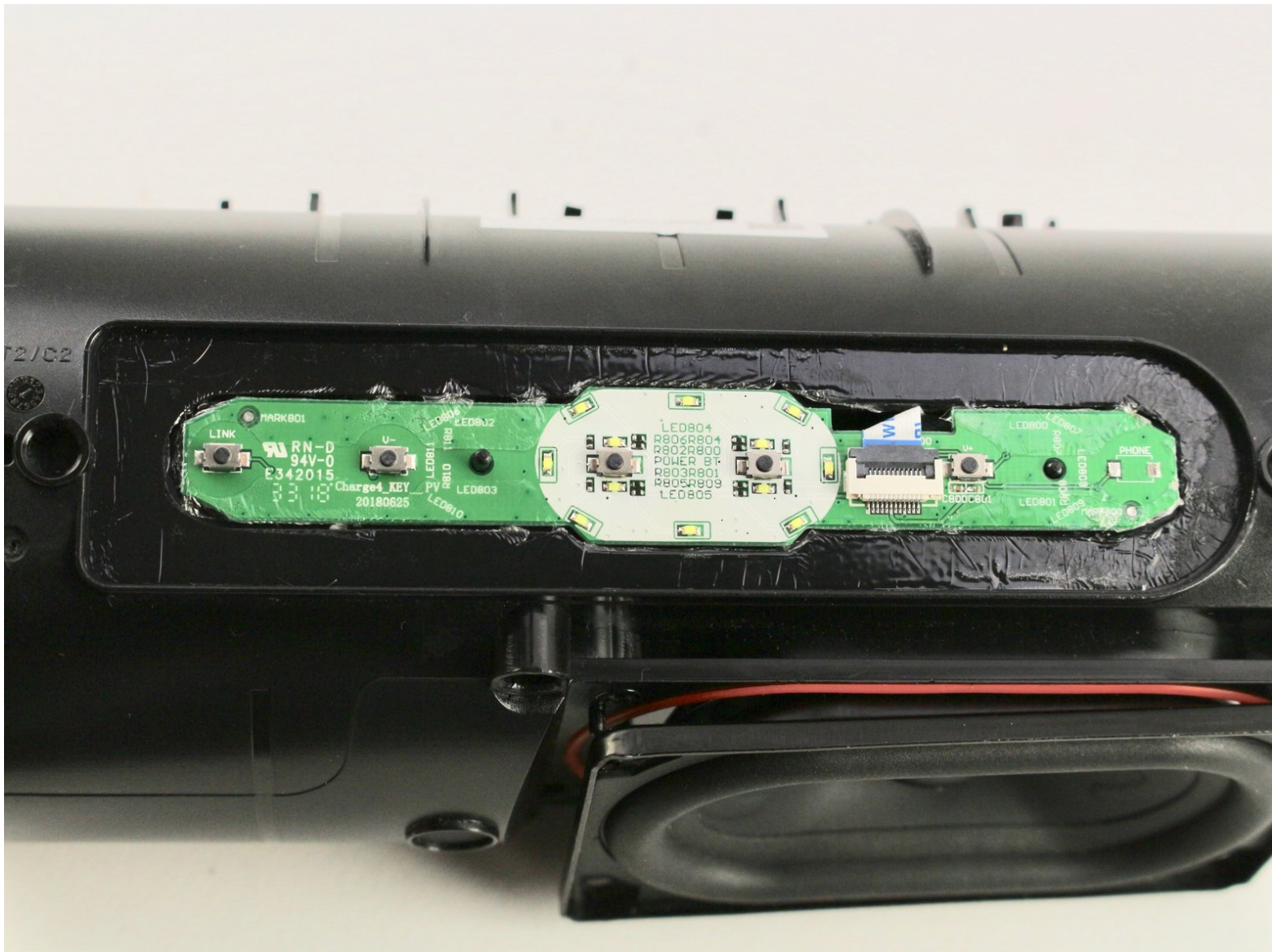




# JBL Charge 4 Buttons Replacement

How to replace the buttons on your JBL Charge 4. (Model: CHARGE4S)

Written By: Zachary Colwell



---

## INTRODUCTION

The buttons are needed to power your speaker on and off as well as complete other functions including putting the speaker into Bluetooth pairing mode. If the buttons are not working properly they may be broken or worn down and need replacement. This guide will show you how to replace the buttons in your JBL Charge 4.



### TOOLS:

- [iFixit Opening Tools](#) (1)
  - [Phillips #0 Screwdriver](#) (1)
  - [Spudger](#) (1)
-

## Step 1 — Speaker Grille



- Flip your speaker over and insert the plastic opening tool into the slit on the grille.
- Pry away from yourself towards the back of the speaker to release the clip.
- Repeat this process for the clip on the other side.

## Step 2



- Remove the two 8mm Phillips #0 screws from the other edge of the grille.



### Step 3



- Pull apart both sides of the grille.
- Lift the cover off of the speaker.

### Step 4 — Passive Bass Radiators




- Using the plastic opening tool, lift the tab on top of the speaker to release the radiator from the clips.
- Repeat this process on the other clips around the radiator to release it from the frame.

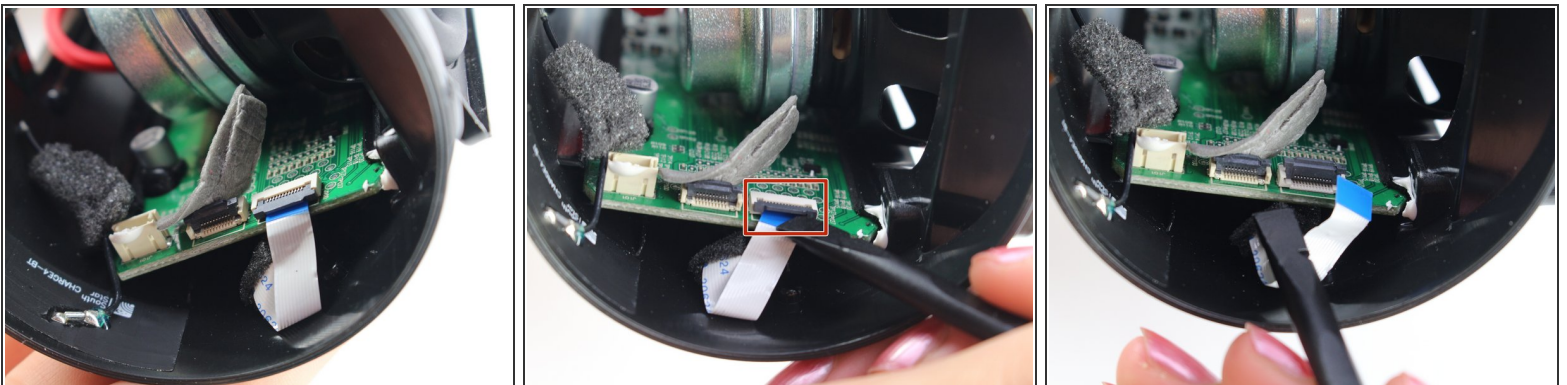
## Step 5



- Push the radiator off of the frame of the device.
- Repeat on the other side.

 The passive bass radiators seal out water from inside the device. Removing them multiple times may compromise the waterproof nature of the speaker.

## Step 6 — Buttons




- Lift up the tape covering the button control board ZIF connector on the left side of the motherboard.
- Flip up the black locking flap on the ZIF connector with the tip of the spudger or your fingernail to release the white ribbon cable.

## Step 7



- Flip the speaker over so the buttons are on the top.
- Using the plastic opening tool, pry up the rubber covering the button control board from the adhesive.
- Remove the cover and set to the side.

 By removing the rubber cover and the control board you are breaking adhesives that may result in the speaker no longer being waterproof.

## Step 8



- Using the plastic opening tool, pry up the button control board from the adhesive.
  - ❗ This will require cutting the adhesive surrounding the board.
- Gently lift off the button control board feeding the ribbon cable through the slot.
- ✦ When installing a new button control board, make sure to clean all the adhesive residue left by the old board.

To reassemble your device, follow these instructions in reverse order.