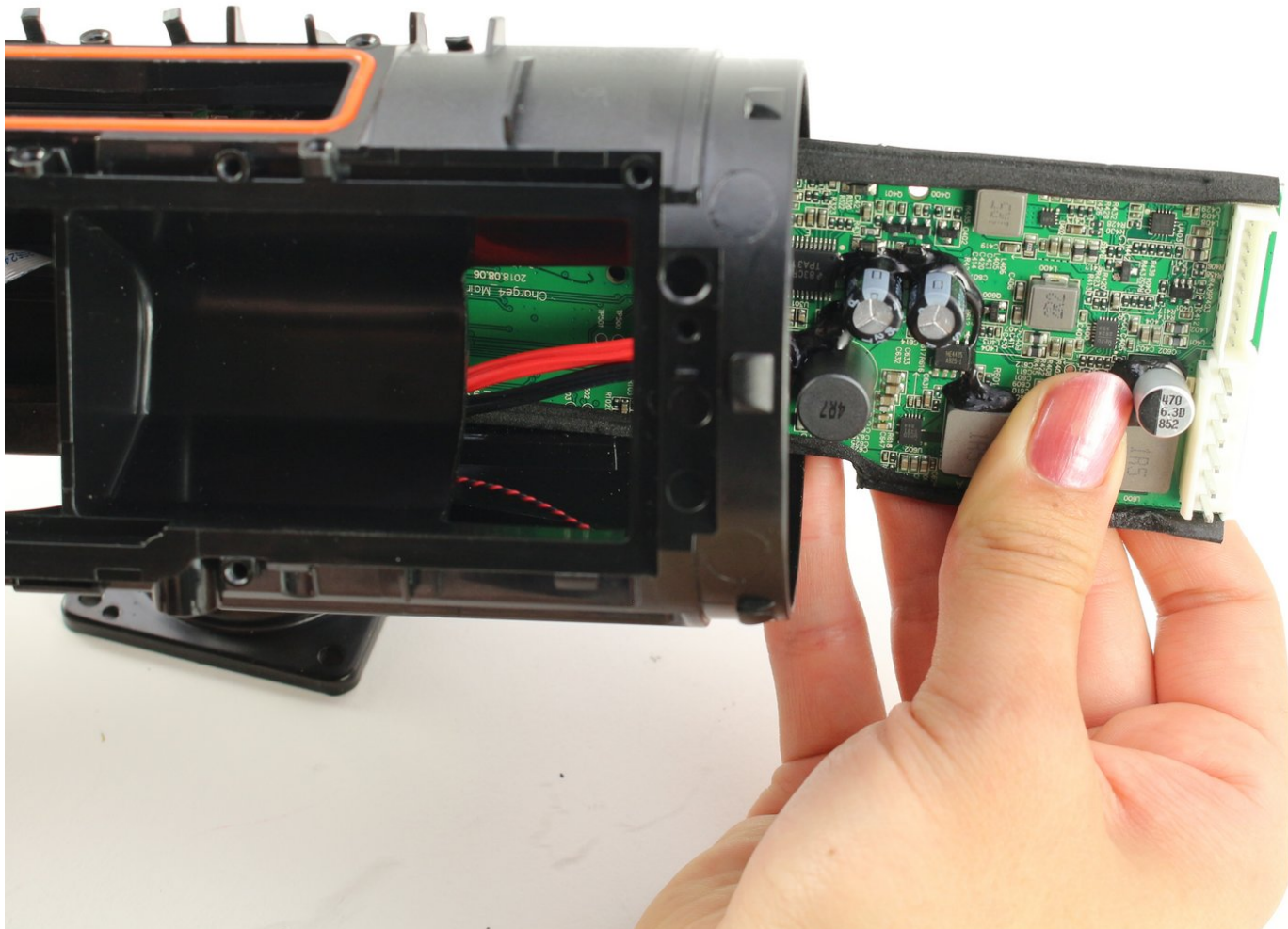




JBL Charge 4 Motherboard Replacement

How to replace the motherboard on your JBL Charge 4. (Model:CHARGE4S)

Written By: Zachary Colwell



INTRODUCTION

The motherboard is responsible for making sure all of the parts in the speaker work together. It is also responsible for Bluetooth functionality and contains all the connectors for the different parts. This guide will show you how to replace the motherboard in the event that it fails and none of the parts in your speaker are functioning properly.



TOOLS:

- [Phillips #1 Screwdriver](#) (1)
 - [Soldering Iron](#) (1)
 - [Spudger](#) (1)
 - [Tweezers](#) (1)
 - [iFixit Opening Tools](#) (1)
 - [Phillips #0 Screwdriver](#) (1)
-

Step 1 — Speaker Grill



- Flip your speaker over and insert the plastic opening tool into the slit on the grille.
- Pry away from yourself towards the back of the speaker to release the clip.
- Repeat this process for the clip on the other side.

Step 2



- Remove the two 8mm Phillips #0 screws from the other edge of the grille.

Step 3



- Pull apart both sides of the grille.
- Lift the cover off of the speaker.

Step 4 — Passive Bass Radiators




- Using the plastic opening tool, lift the tab on top of the speaker to release the radiator from the clips.
- Repeat this process on the other clips around the radiator to release it from the frame.

Step 5



- Push the radiator off of the frame of the device.
- Repeat on the other side.

 The passive bass radiators seal out water from inside the device. Removing them multiple times may compromise the waterproof nature of the speaker.

Step 6 — Battery



- Remove the two 6mm Phillips #0 screws on the front side of the port bay cover.

Step 7



- Gently slide the cover back and off the hooks.
- Remove the port bay cover.

Step 8



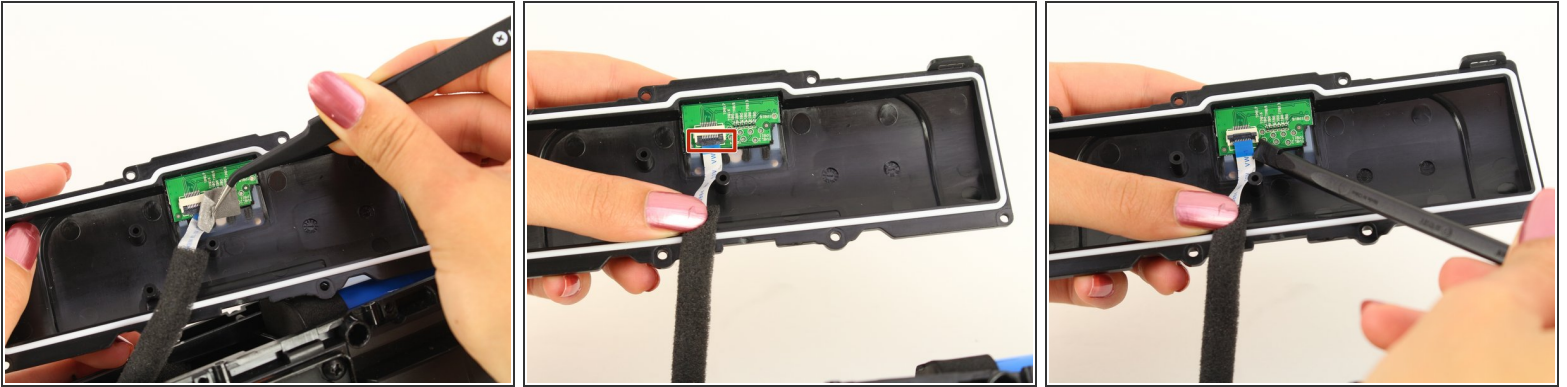
- Remove the two 6mm Phillips #0 screws.
- Remove the four 8mm Phillips #0 screws.

Step 9



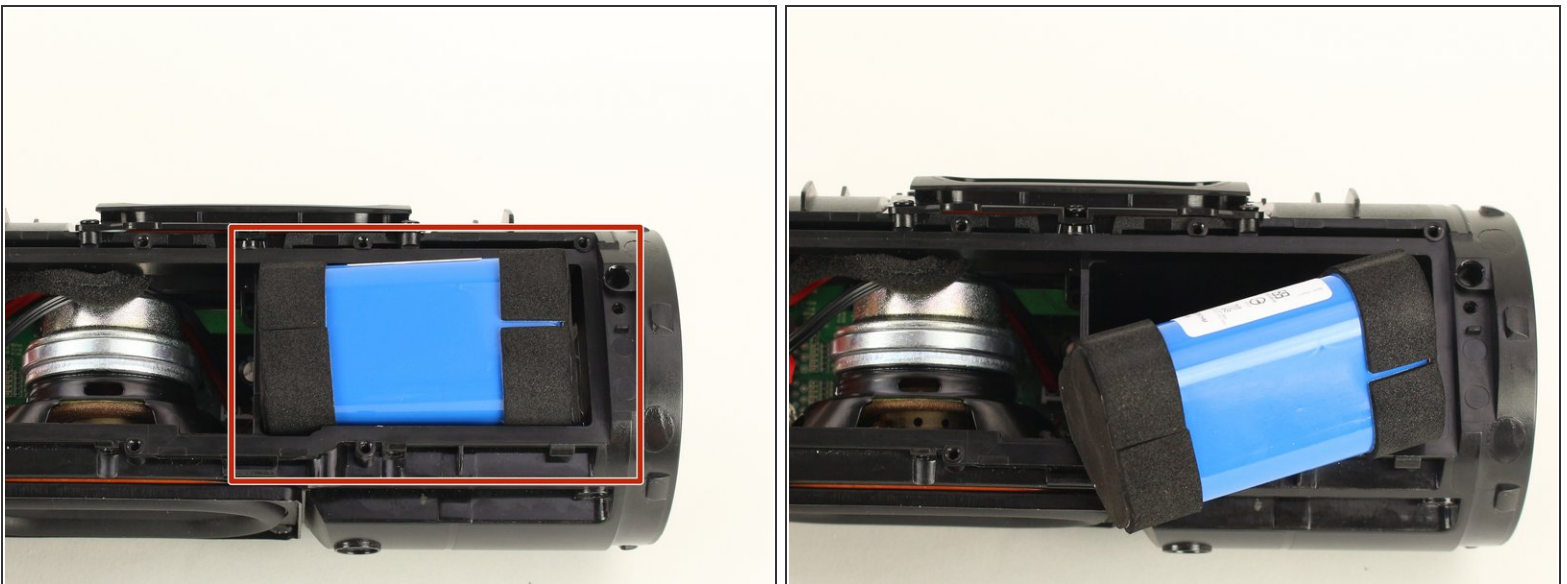
- Lift up the battery cover.

Step 10



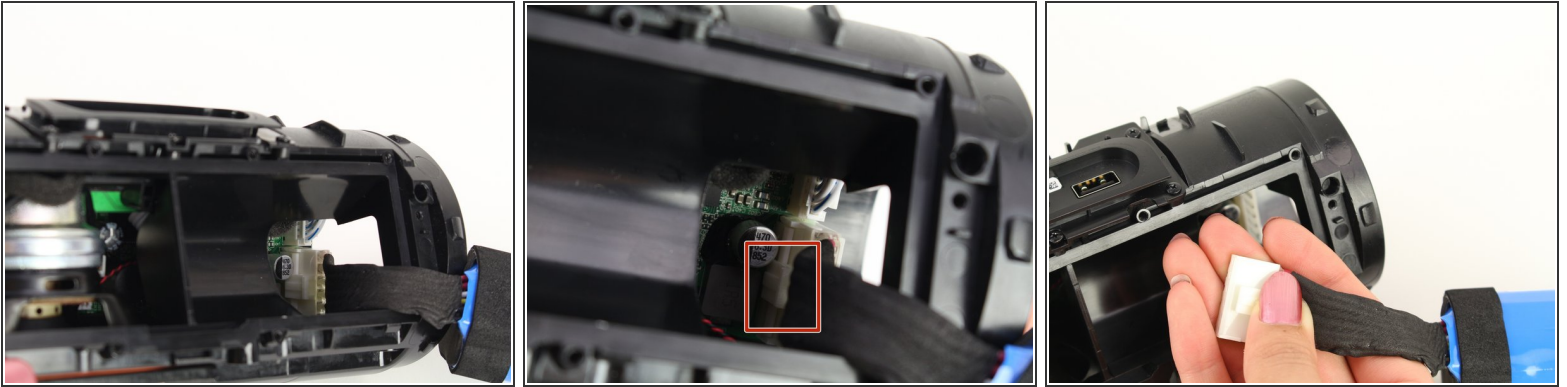
- Remove the sticky tape to expose the white ribbon cable ZIF connector.
- Flip up the black locking flap on the ZIF connector with the tip of a spudger or your fingernail to release the cable.
- Remove the white ribbon cable from the battery cover and place the cover to the side.

Step 11



- Remove the battery from the battery socket by gently pulling on it.

Step 12



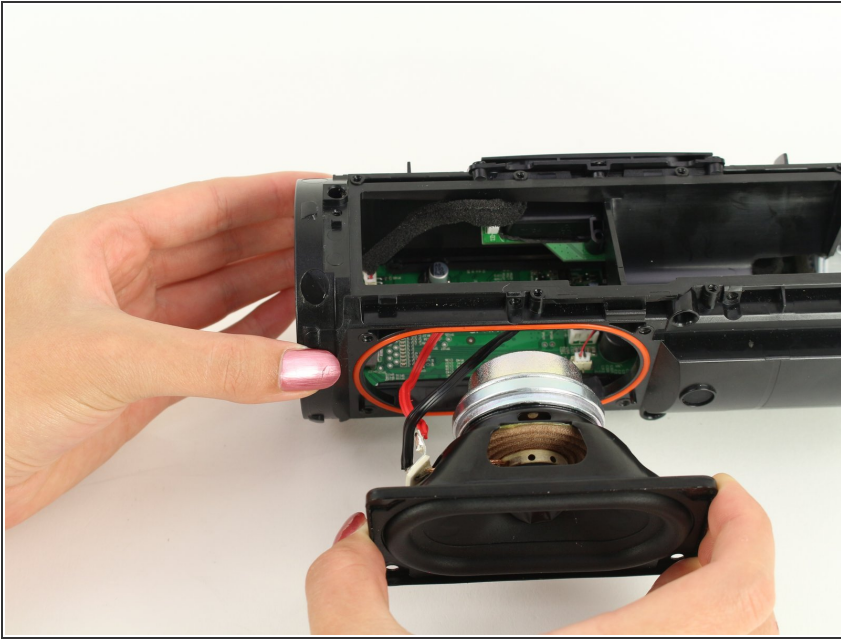
- Pull out the battery enough to expose the battery's wire connector.
- Push down on the white tab and gently pull out the battery-device connector.

Step 13 — Speaker



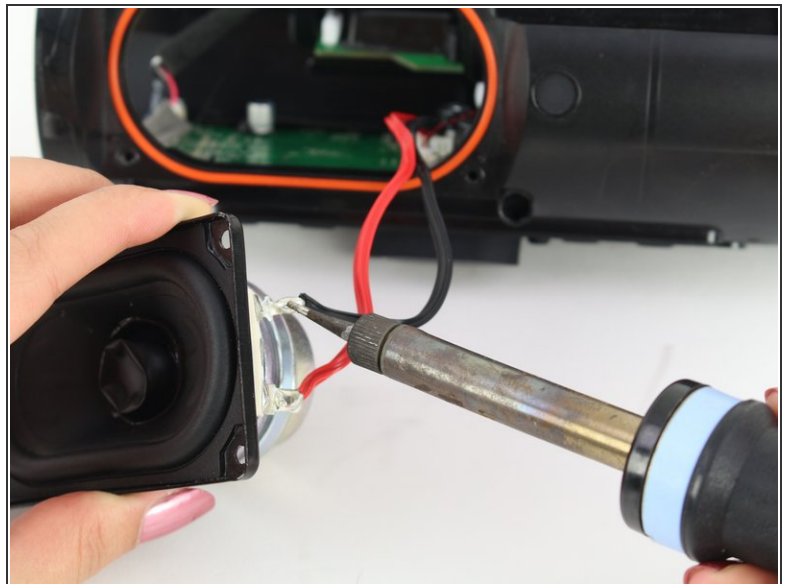
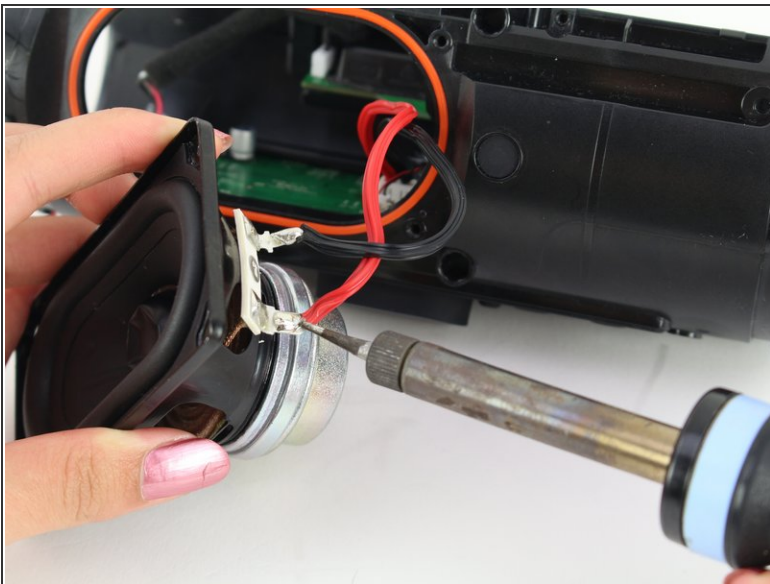
- Flip the device so that the speaker faces you.
- Remove the four 8mm Phillips #1 screws.

Step 14



- Gently pull out the speaker.

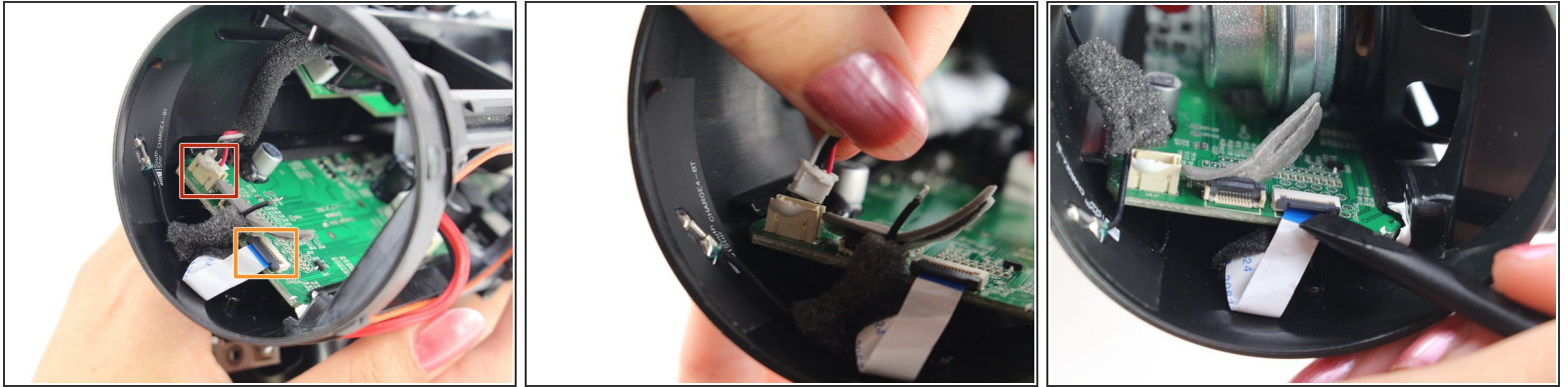
Step 15



- Desolder the red and black wires.

 A guide for soldering and desoldering can be found [here](#).

Step 16 — Motherboard



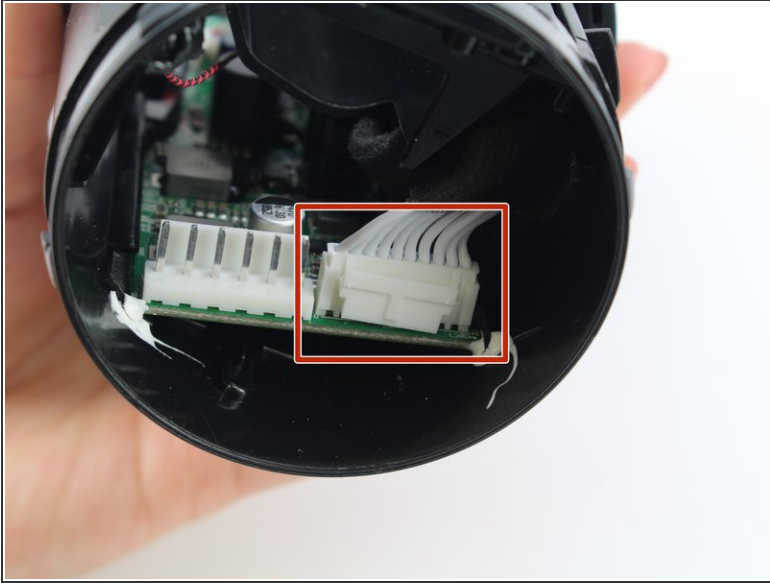
- Remove the wire harness coming from the port bay on the left side of the motherboard by gently lifting the connector from its housing.
- Remove the white ribbon cable from the ZIF connector by lifting the black locking flap on the connector with a spudger or your fingernail.

Step 17



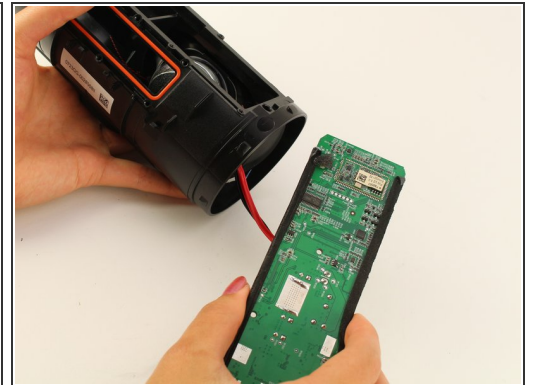
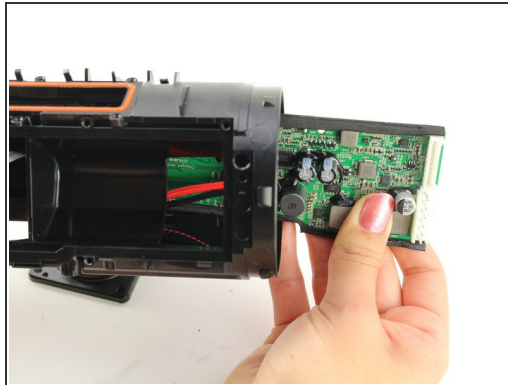
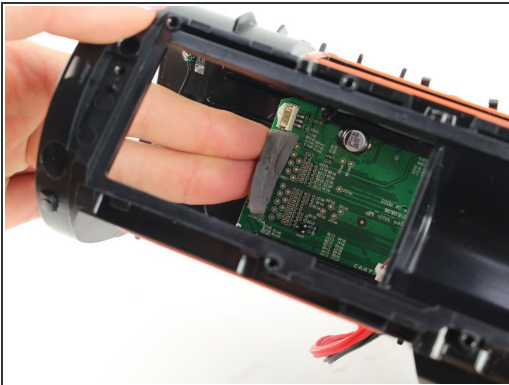
- Remove the ground cable harness next to the speaker wire by gently pulling it from the connector.

Step 18



- Flip the speaker around to the other side.
- Remove the wiring harness leading to the port bay by pressing down on the tab and gently pulling the harness from the connector.

Step 19



- Push the motherboard from either side of the housing along its tracks.
 - Pull out the motherboard from the speaker housing.
- ★ When putting the motherboard back in the housing, ensure that it is between the two tracks on the top side of the speaker.

To reassemble your device, follow these instructions in reverse order.