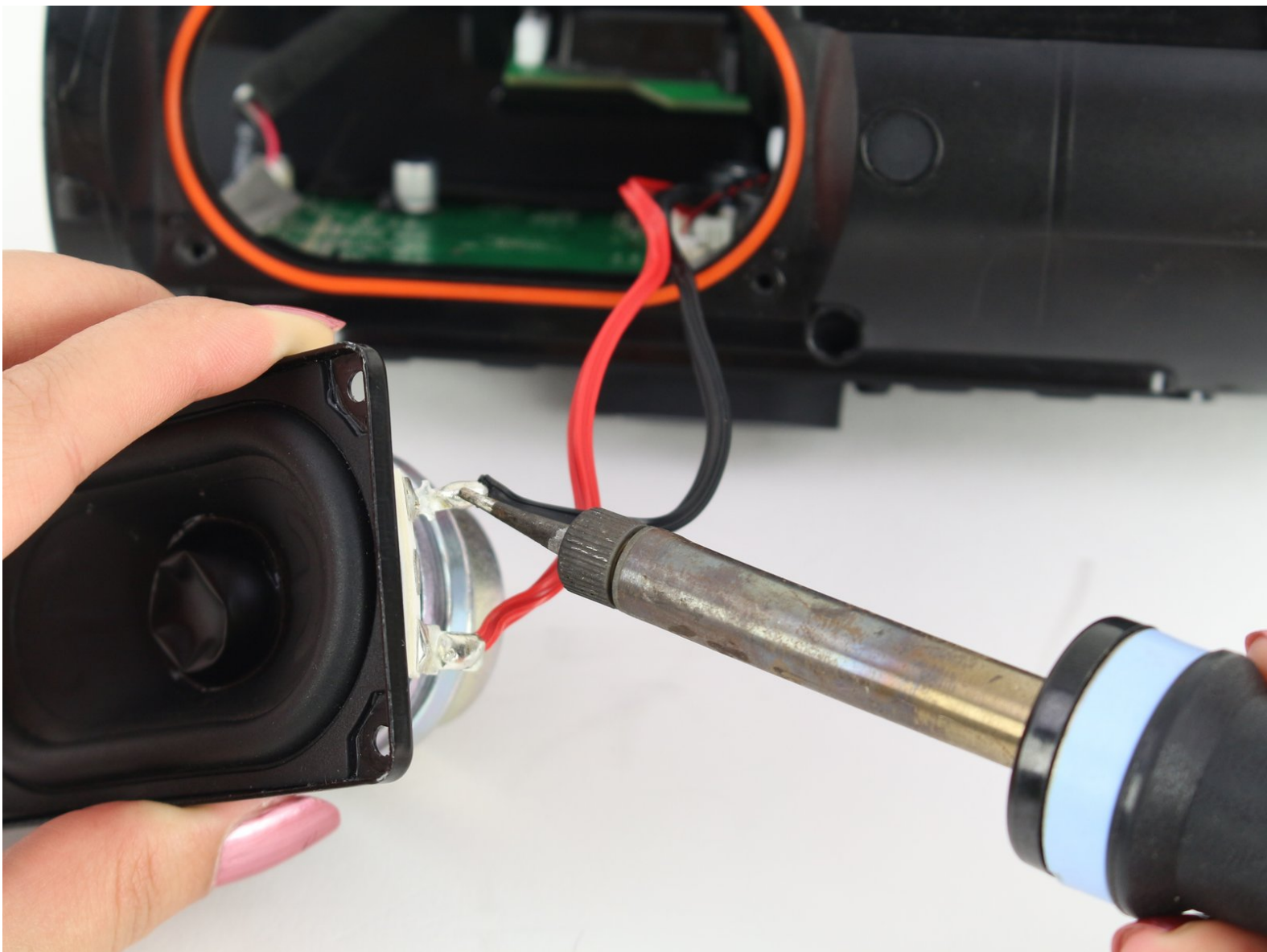




JBL Charge 4 Speaker Replacement

This guide will help you replace the speaker component of the JBL Charge 4 if it has been damaged. (Model: CHARGE4S)

Written By: Rohith Dara



INTRODUCTION

The speaker is responsible for creating the sound coming out of the device. If the sound quality is low or your speaker is not making sound at all but powering on it may be the result of a damaged or broken speaker. This guide will show you how to replace the speaker in your JBL Charge 4. This guide requires knowledge of desoldering. Find a guide on soldering and desoldering [here](#).



TOOLS:

- [iFixit Opening Tools](#) (1)
 - [Phillips #0 Screwdriver](#) (1)
 - [Phillips #1 Screwdriver](#) (1)
 - [Soldering Iron](#) (1)
-

Step 1 — Speaker Grill



- Flip your speaker over and insert the plastic opening tool into the slit on the grille.
- Pry away from yourself towards the back of the speaker to release the clip.
- Repeat this process for the clip on the other side.

Step 2



- Remove the two 8mm Phillips #0 screws from the other edge of the grille.

Step 3



- Pull apart both sides of the grille.
- Lift the cover off of the speaker.

Step 4 — Passive Bass Radiators




- Using the plastic opening tool, lift the tab on top of the speaker to release the radiator from the clips.
- Repeat this process on the other clips around the radiator to release it from the frame.

Step 5



- Push the radiator off of the frame of the device.
- Repeat on the other side.

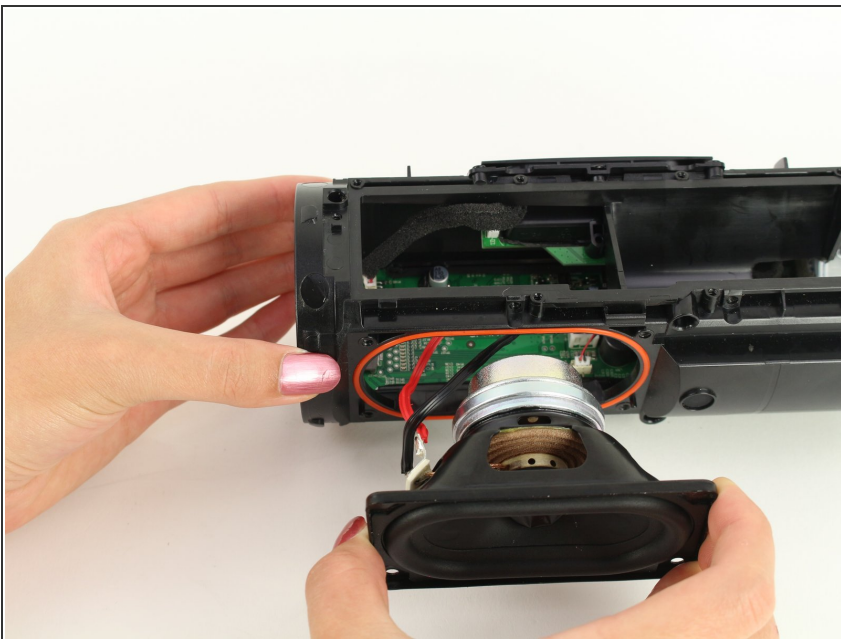
 The passive bass radiators seal out water from inside the device. Removing them multiple times may compromise the waterproof nature of the speaker.

Step 6 — Speaker



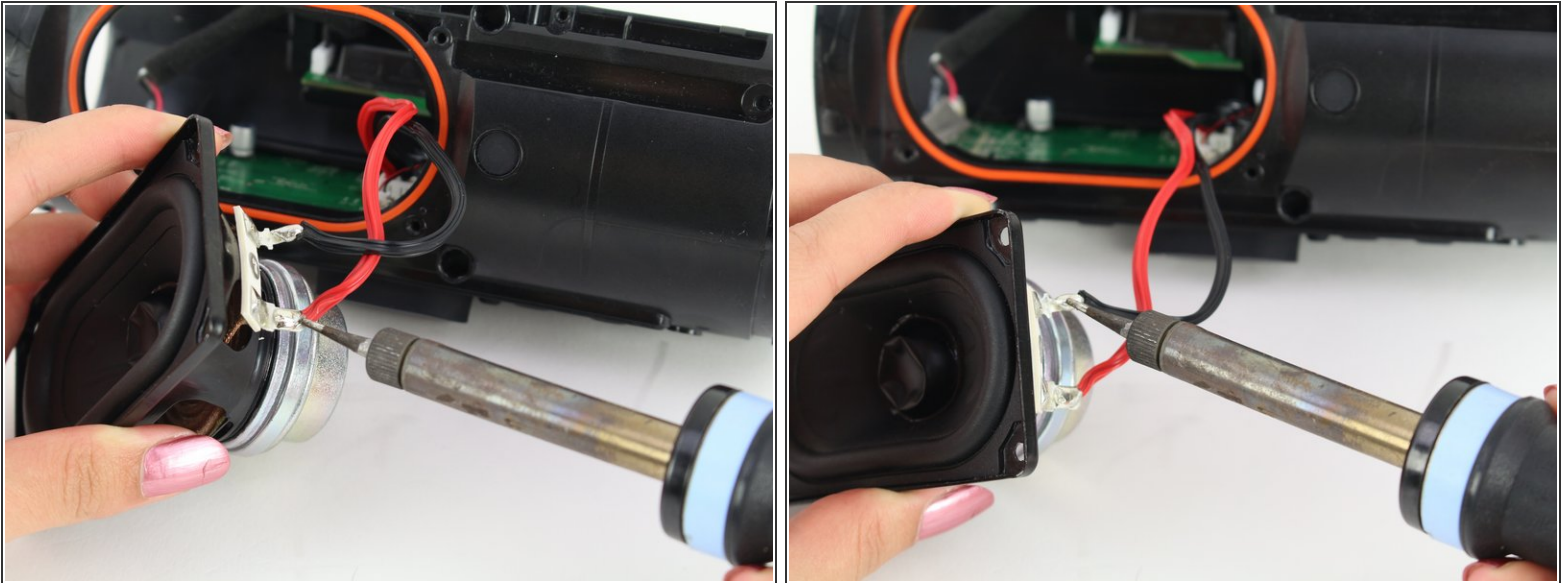
- Flip the device so that the speaker faces you.
- Remove the four 8mm Phillips #1 screws.

Step 7




- Gently pull out the speaker.

Step 8



- Desolder the red and black wires.

 A guide for soldering and desoldering can be found [here](#).

To reassemble your device, follow these instructions in reverse order.