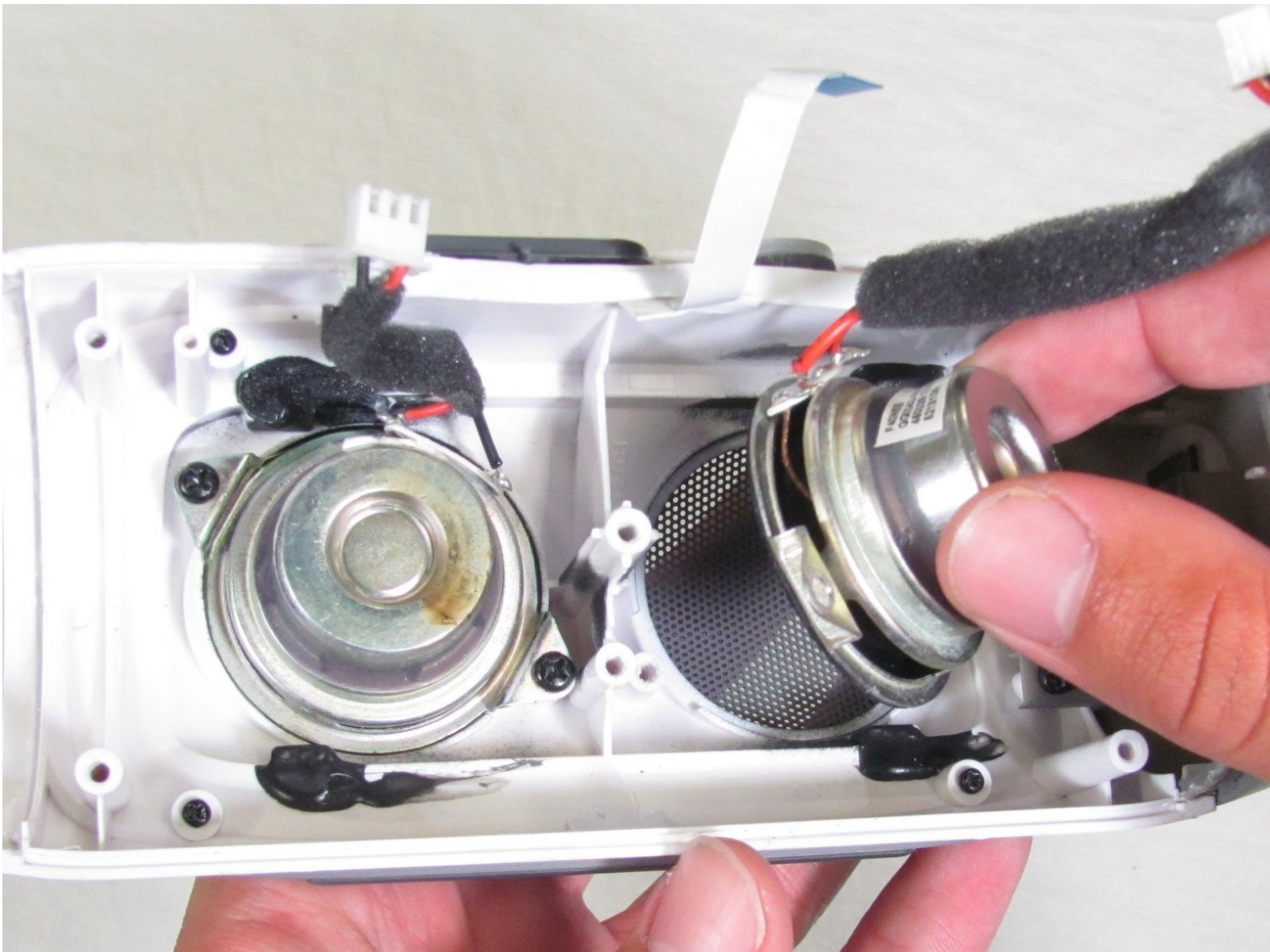




JBL Charge Speaker Replacement

This guide will help you to open the device and replace the speakers of the JBL Charge.

Written By: Alexander Castanares



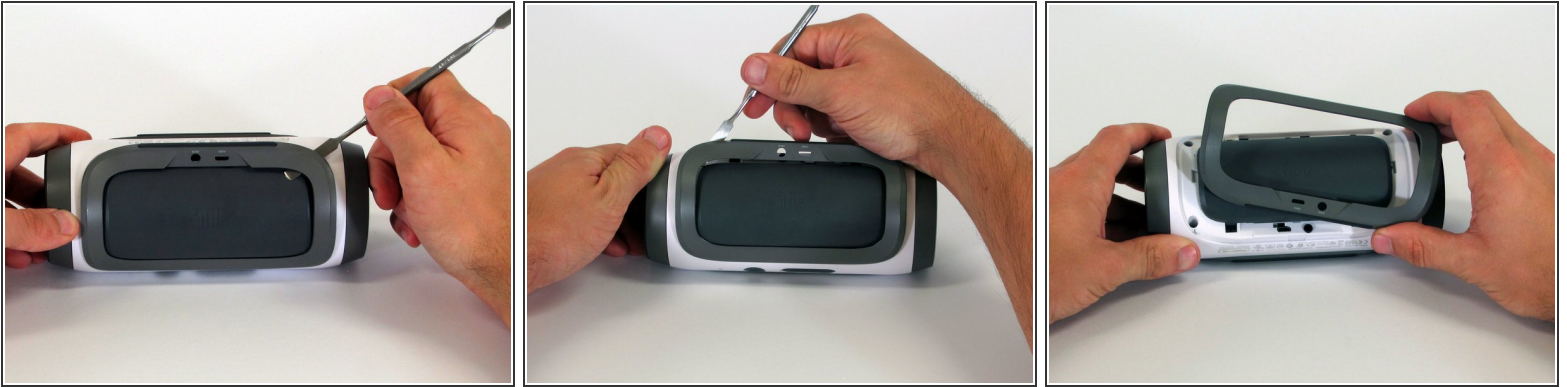
INTRODUCTION

The speakers are located behind the motherboard. Follow this guide to replace one or both broken speakers.

TOOLS:

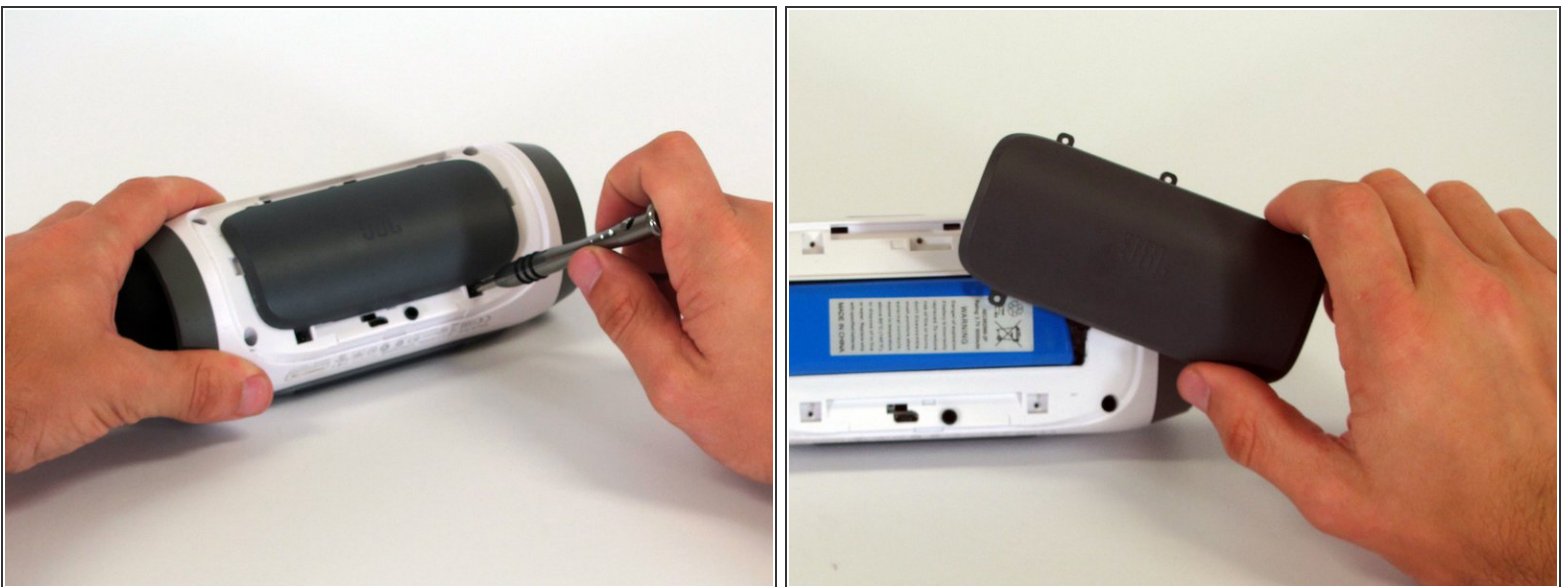
- [Phillips #2 Screwdriver](#) (1)
 - [Metal Spudger](#) (1)
 - [Spudger](#) (1)
 - [Phillips #1 Screwdriver](#) (1)
-

Step 1 — Disassembling JBL Charge Casing



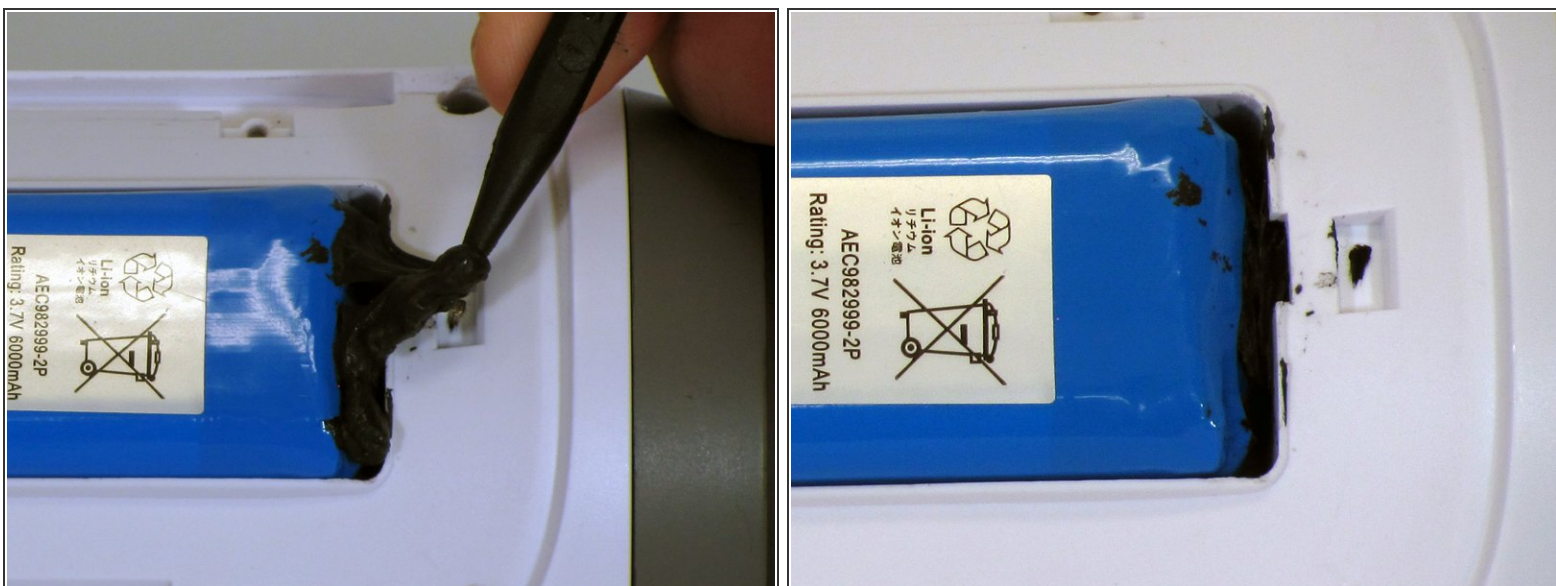
- Make sure the device is powered off before you begin to disassemble the speaker.
- Remove the trim from the speaker using a jimmy or metal spudger.

Step 2



- Use the PH1 screwdriver to remove all five of the 6 mm screws from the battery cover.
- Remove the battery cover and set the cover aside.

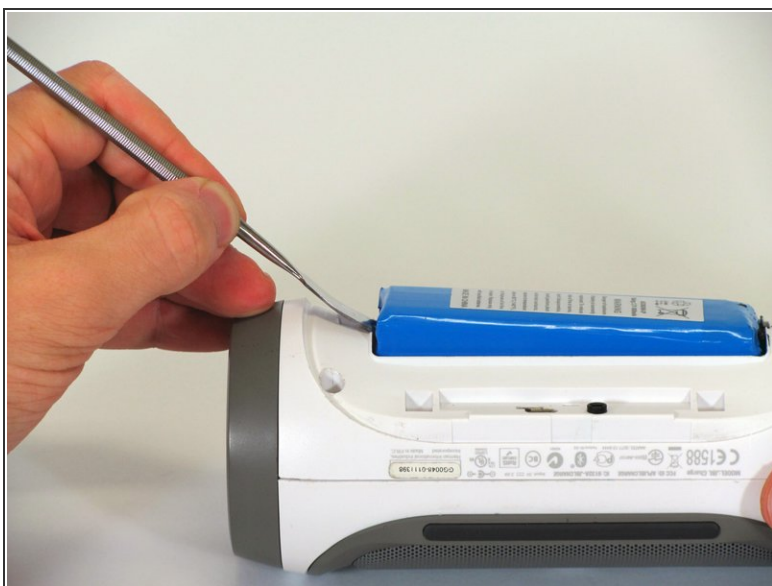
Step 3



- Use a spudger to carefully remove the liquid electrical tape that holds the battery inside the battery compartment.

⚠ Be careful not to puncture the battery, or damage the battery wire underneath the liquid electrical tape.

Step 4



- Use a metal spudger to lift the battery out of the device.
 - Lift the end of the battery that does not have the wire connection and remove the 16 mm PH2 screw underneath the battery.
- ⚠ Notice the wire that is connecting the battery to the device. Attempting to remove the battery completely could cause damage to the wire.

Step 5



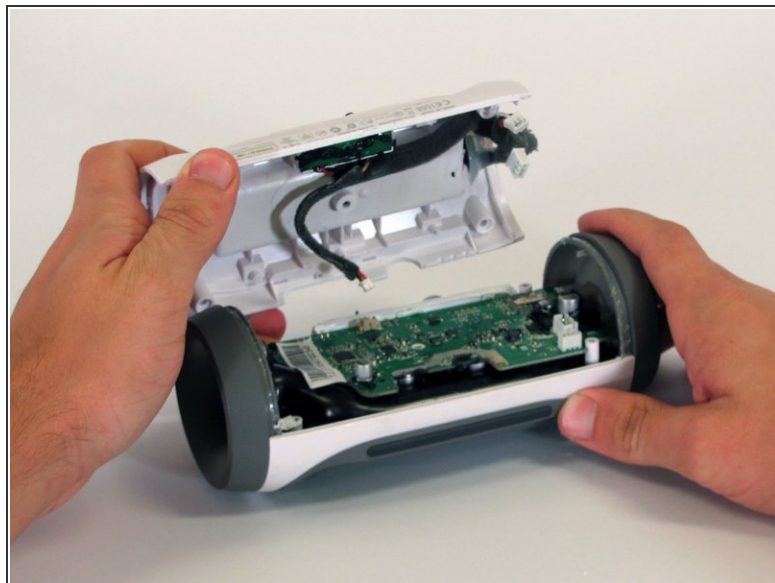
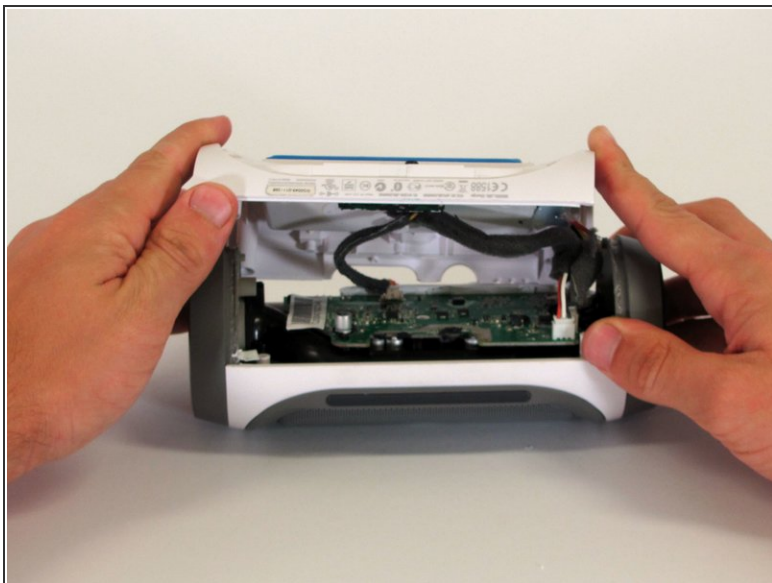
- Remove the four 16 mm screws from the white plastic casing using the PH2 screwdriver.

Step 6



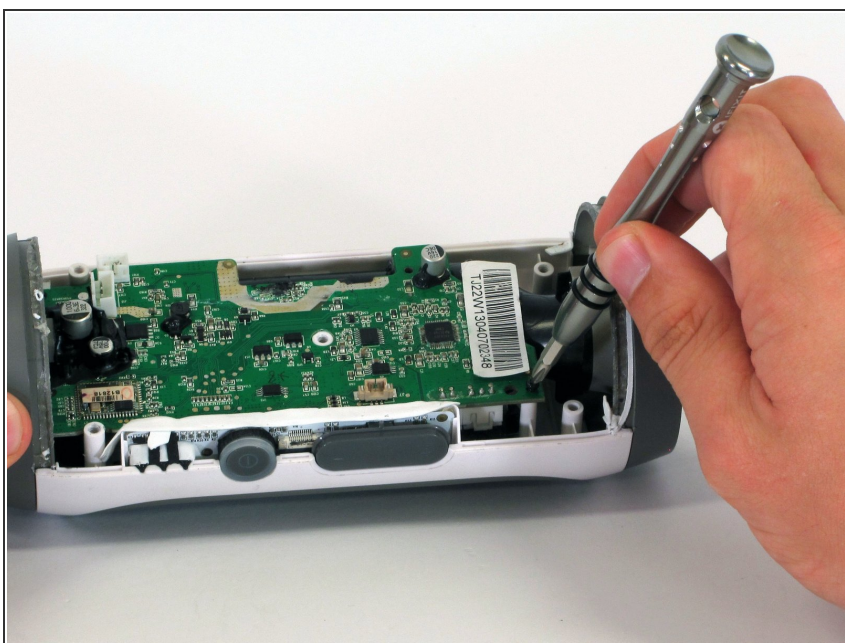
- Starting in a corner of the device where the casing and the side meet, use a pointed metal spudger to pry the back casing off the speaker and the glue holding the seam together.
- Slide the metal spudger along the seam to separate the back casing from the rest of the speaker.

Step 7



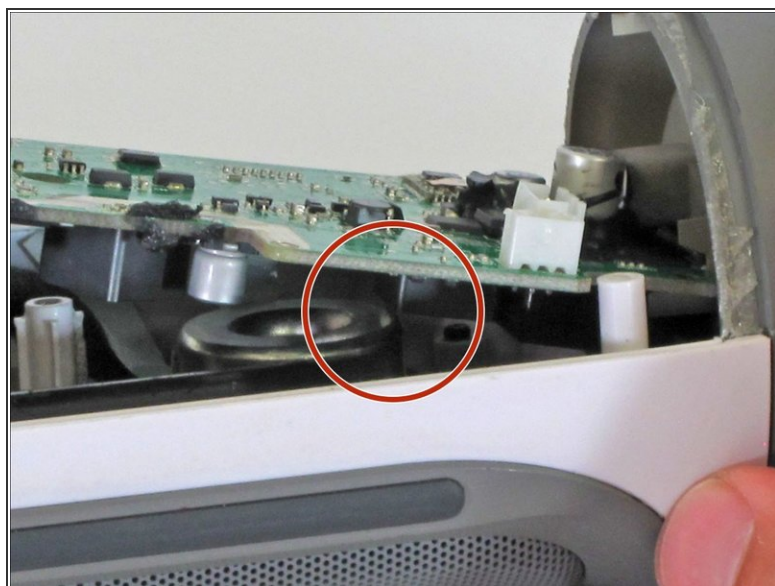
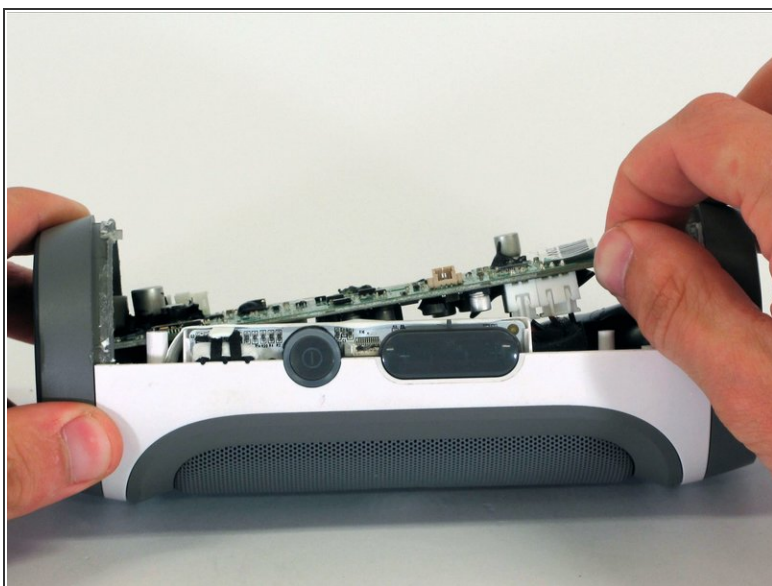
- Once the back casing is open, disconnect the three white connectors from the motherboard.
- Remove the upper casing.

Step 8 — Motherboard



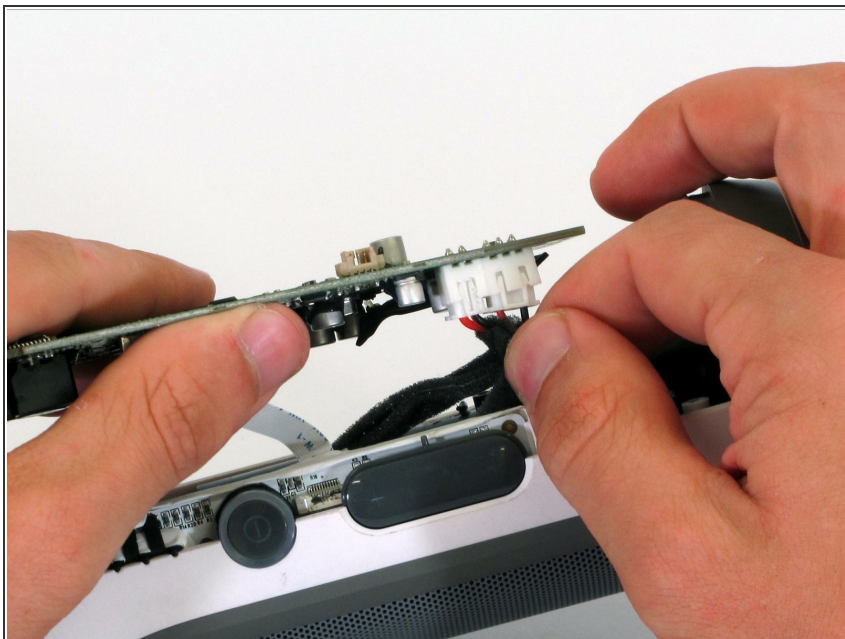
- Remove the 9 mm Phillips screw in the corner of the motherboard.

Step 9



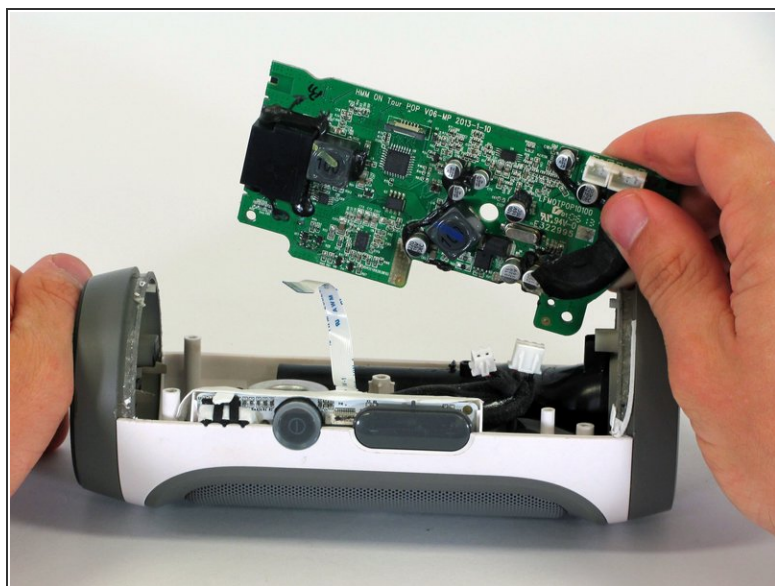
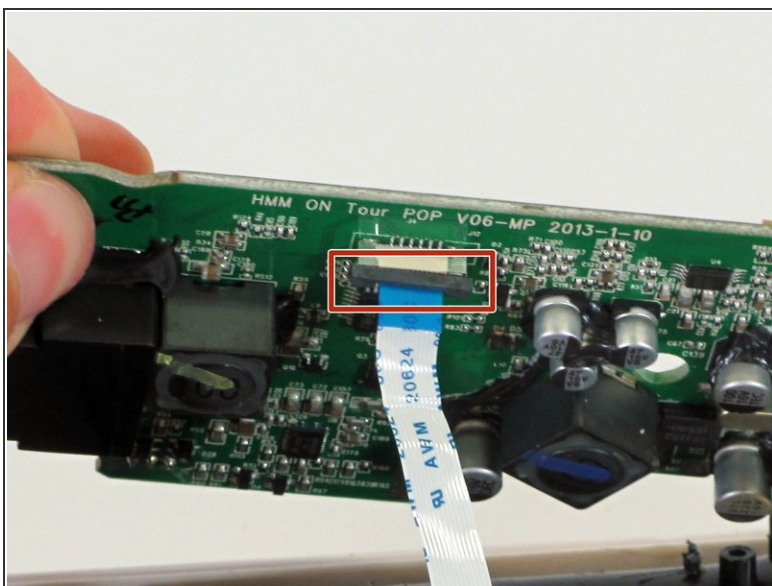
- Remove the motherboard from the casing by lifting the corner of the board out of the device.
 - If the motherboard won't budge, be sure that the square component on the bottom of the motherboard clears the edge of the speaker.
- ⚠ During reassembly, make sure the motherboard is fully installed and not sticking up past its original position, as this could damage the motherboard.

Step 10



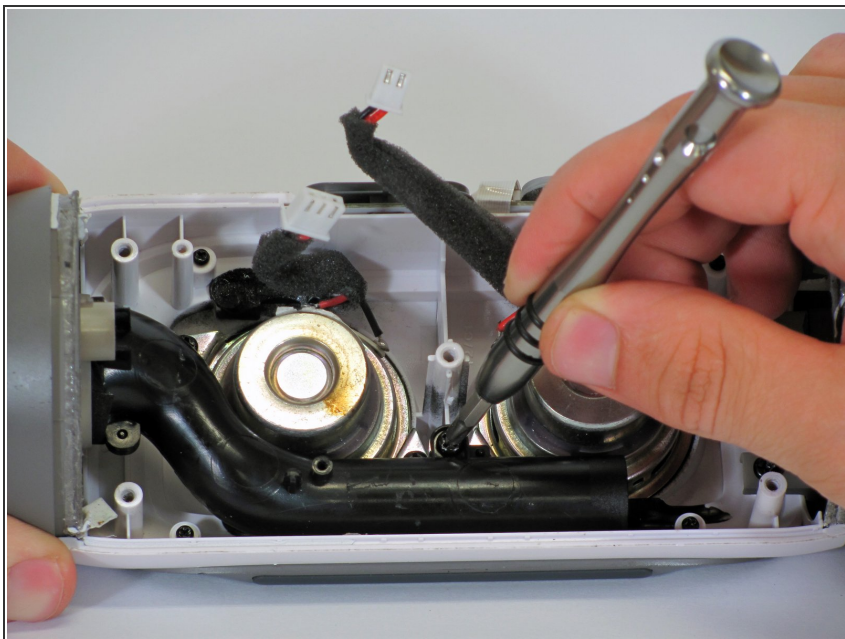
- Disconnect the two white connectors from the bottom of the motherboard.

Step 11



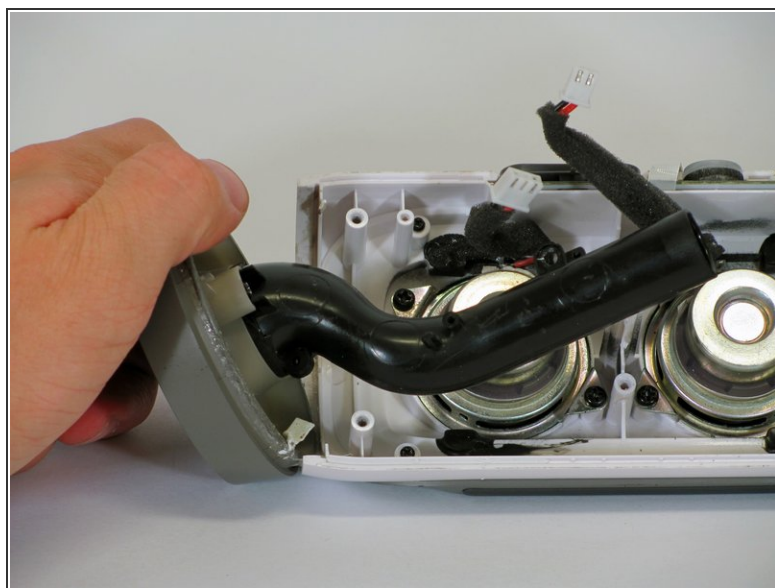
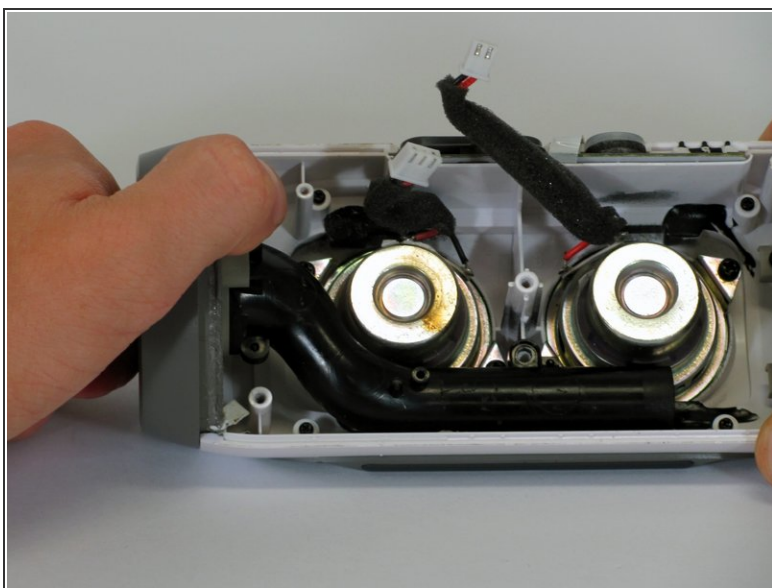
- Pull down on the black clip holding the ribbon cable in place.
- Pull the ribbon cable from the connector using the blue tab.
- Remove the motherboard from the device.

Step 12 — Speaker



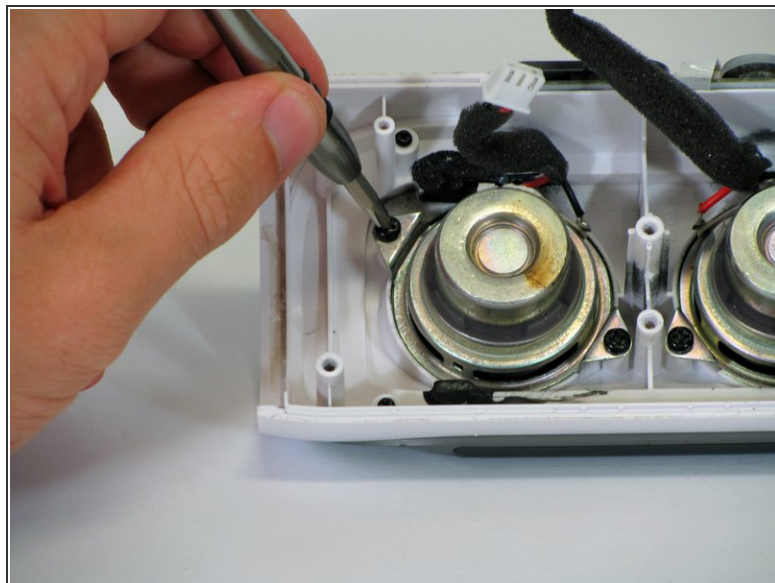
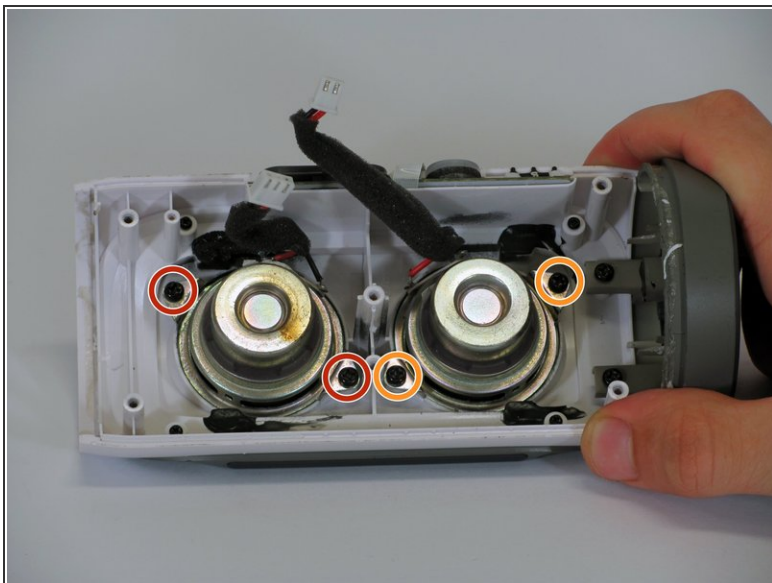
- Using the PH1 screwdriver, remove the 9mm Phillips screw that connects the black tube to the device's interior.

Step 13



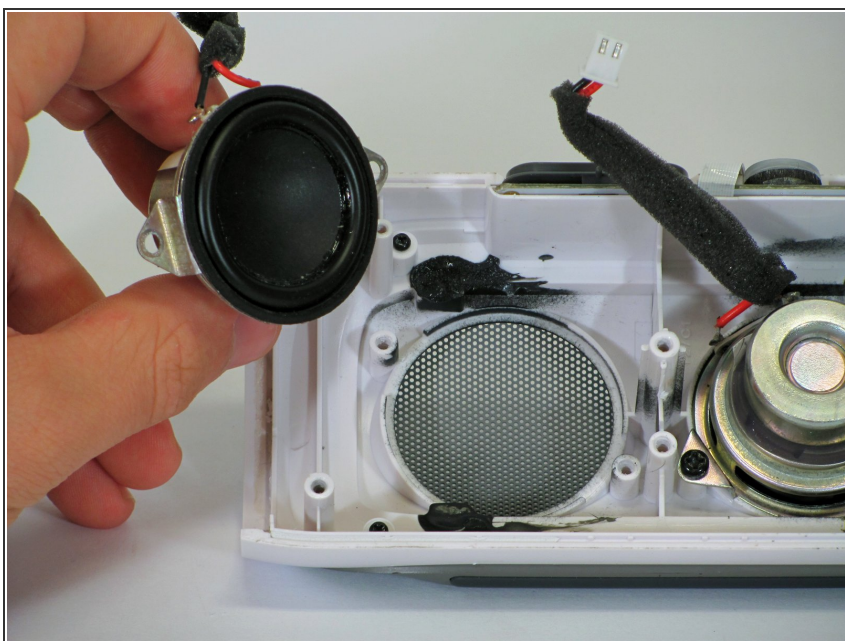
- Slowly but firmly pull the grey cap off the device. This will provide complete access to the speakers.

Step 14



- Each speaker is held in place with two 9mm Phillips screws. Remove the screws using the PH1 screwdriver head.
- If you are replacing the left speaker, remove the screws and speaker on your right.
- If you are replacing the right speaker, remove the screws and speaker on your left.

Step 15



- Pull the speaker out of the casing.

To reassemble your device, follow these instructions in reverse order.