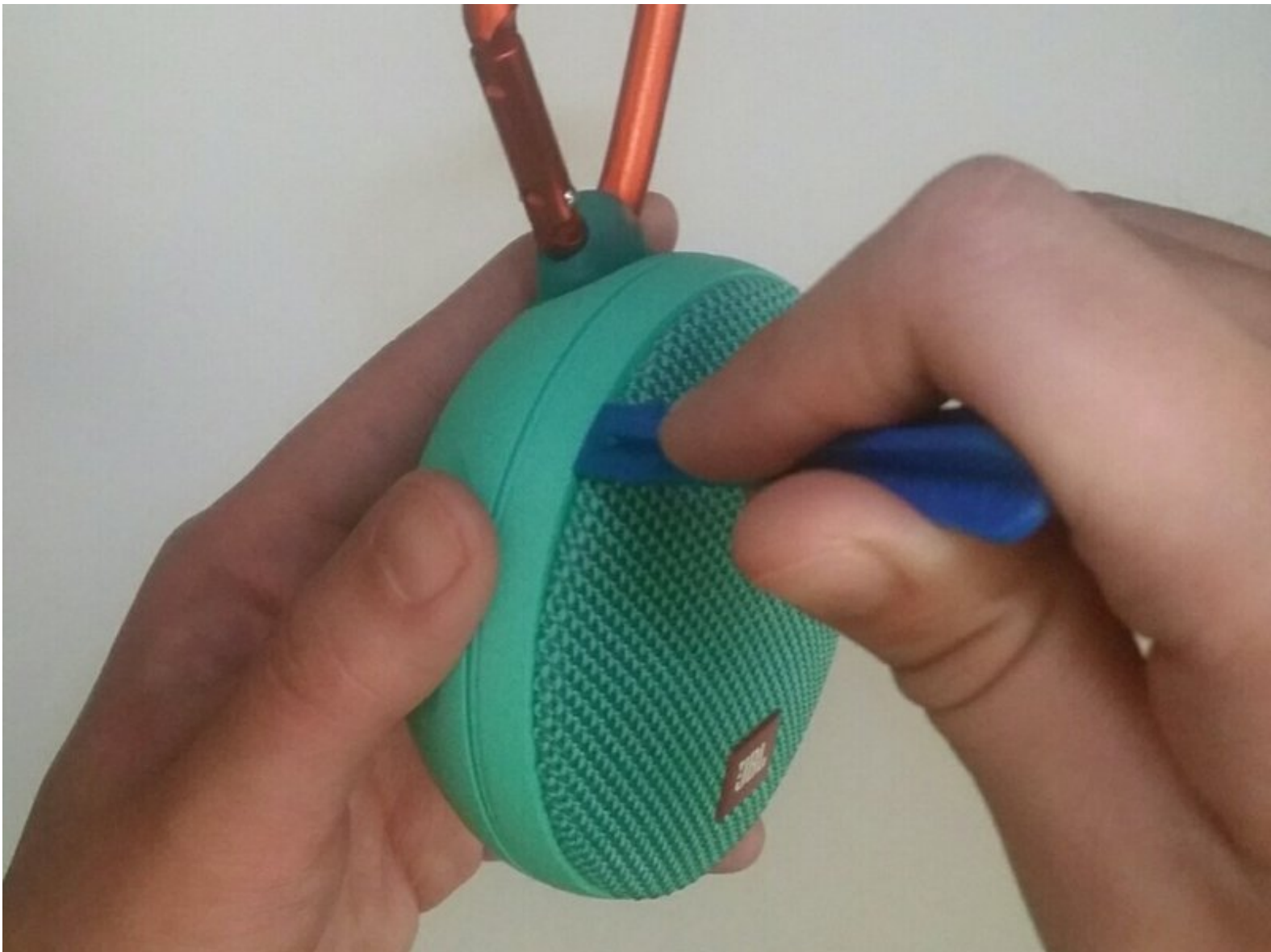




# JBL Clip 2 Battery Replacement

Replace your dying battery to bring the power back to your JBL Clip 2.

Written By: Michael Hong



## INTRODUCTION

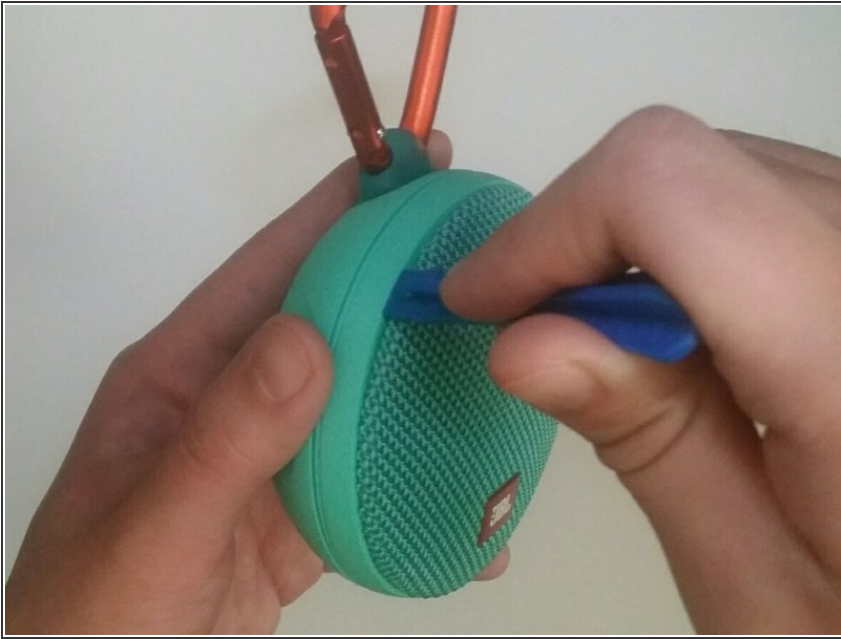
The battery in the JBL Clip 2 is rechargeable. If the battery does not work, you will notice that the device does not stay on as long as it used to or wont turn on at all. If this is the case the battery will have to be replaced. The device will be taken apart and the battery will be removed and replaced.




### TOOLS:

- [iFixit Opening Tools](#) (1)
  - [T8 Torx Screwdriver](#) (1)
  - [Soldering Iron](#) (1)
-

## Step 1 — Battery



- Begin by removing the front cap of the JBL Clip 2 by using the blue plastic opening tool to get in between the creases.

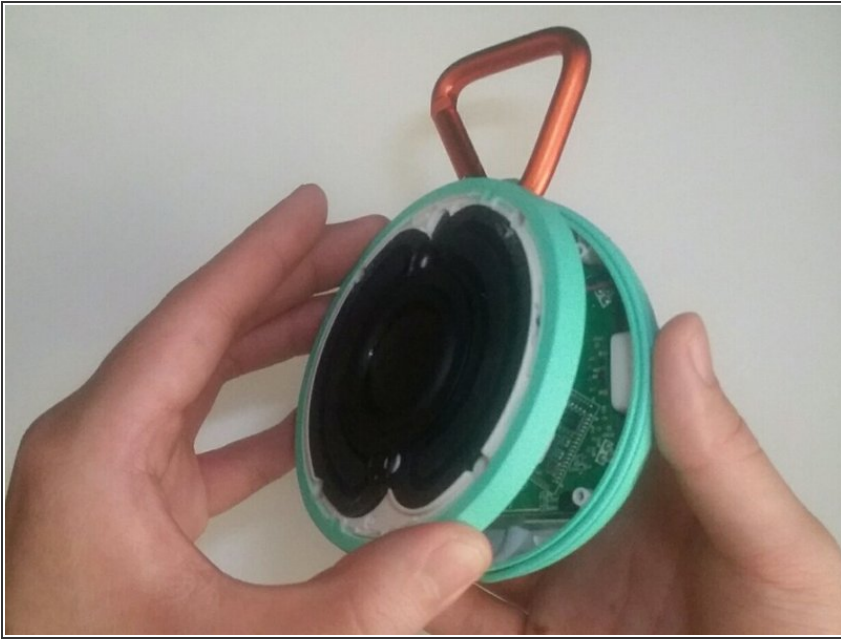
 If your JBL Clip 2 has never been opened this procedure will require moderate amount of force.

## Step 2



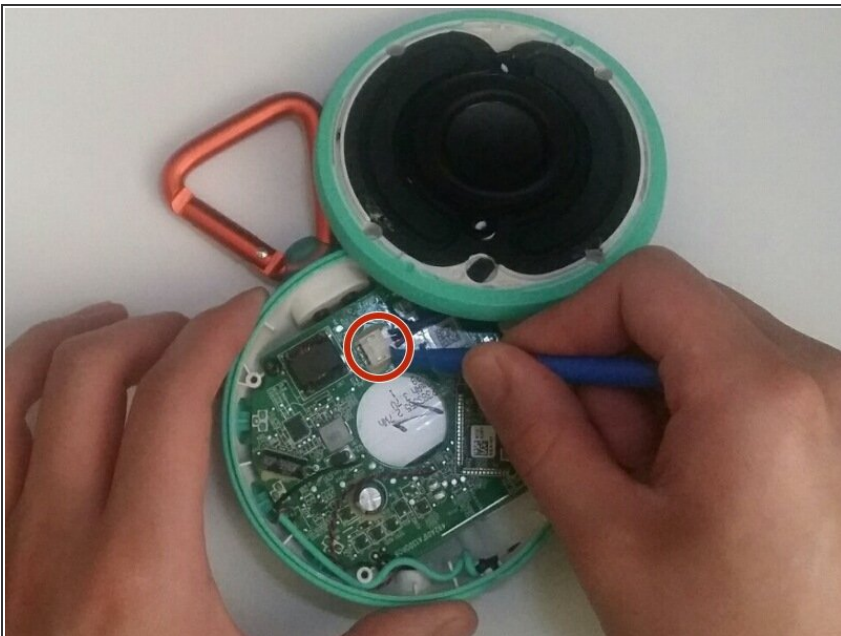
- There will be six 3 mm T8 screws under the cap, remove these six screws.
- If you are not trying to replace the speaker please ignore the two middle 3 mm T8 screws during this procedure.

### Step 3



- The front cover will lift open easily and the components will be visible.

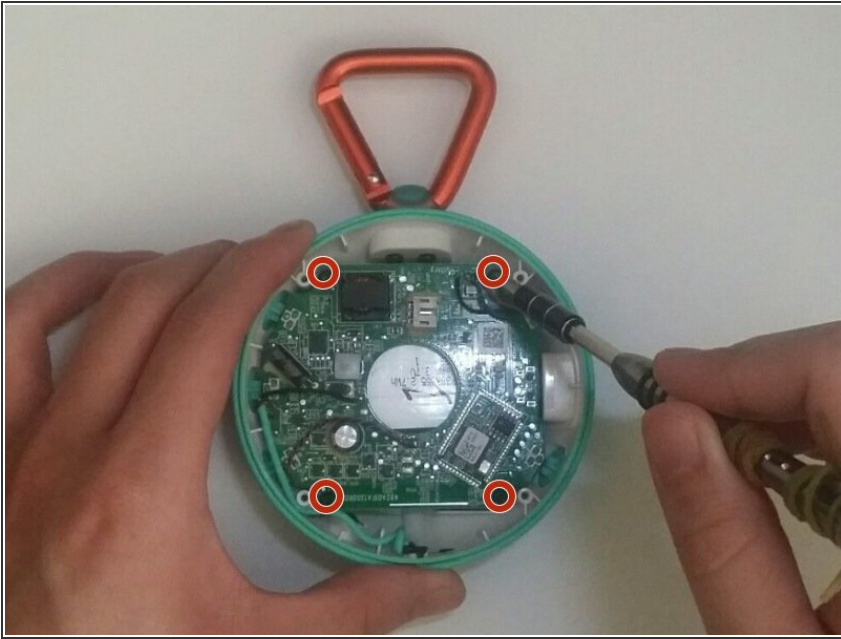
### Step 4



- To completely remove the top portion, disconnect the speaker from the motherboard using the blue plastic opening tool.
- ⚠ While disconnecting be sure to not use too much force as these two parts are meant to become disconnected.

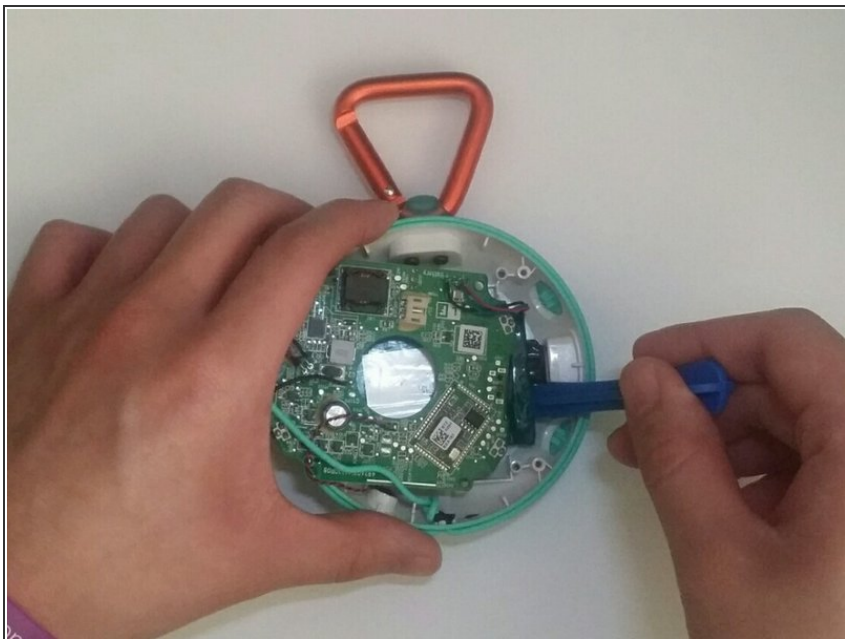


## Step 5



- There will be four 3 mm T8 screws holding the motherboard in place, remove these four screws.

## Step 6



- Slightly move the motherboard to the side to reveal sides of battery, carefully using the blue plastic opening tool to remove the battery from the speaker casing.

⚠ Be careful not to disconnect any soldered wires connected to the motherboard and speaker casing.

## Step 7



- Carefully looking at the motherboard there are three solder points labeled battery, that need to be desoldered.
- If you need help with desoldering refer to [How to Solder and Desolder Connections](#) help. After these are removed the battery should be free.

To reassemble your device, follow these instructions in reverse order.