



# JBL Clip 2 Carabineer Mount Replacement

Replace your JBL Clip 2's broken carabineer mount.

Written By: Michael Hong



---

## INTRODUCTION

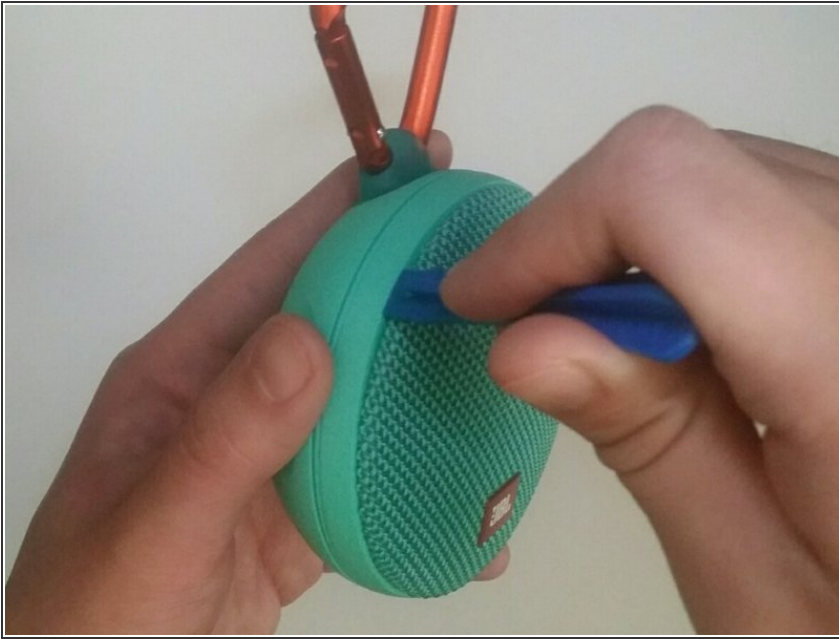
The carabineer on the JBL Clip 2 is removable. If the carabineer mount does not work, you will notice that the device will no longer clip on to secure locations. If this is the case the carabineer mount will have to be replaced. The device will be taken apart and the carabineer mount will be removed and replaced.




### TOOLS:

- [iFixit Opening Tools](#) (1)
  - [T8 Torx Screwdriver](#) (1)
-

## Step 1 — Carabiner Mount



- Begin by removing the front cap of the JBL Clip 2 by using the blue plastic opening tool to get in between the creases.

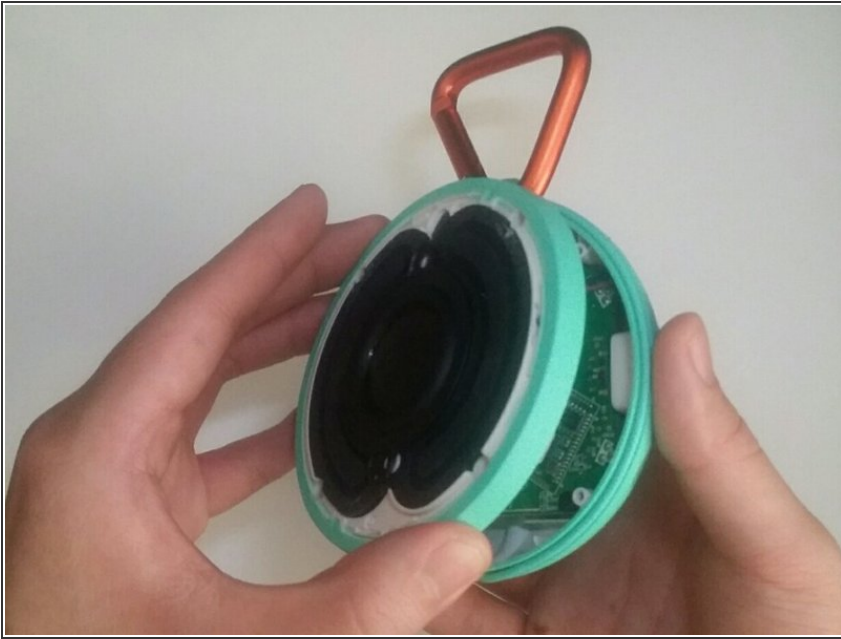
 If your JBL Clip 2 has never been opened this procedure will require moderate amount of force.

## Step 2



- There will be six 3 mm T8 screws under the cap, remove these six screws.
- If you are not trying to replace the speaker please ignore the two middle 3 mm T8 screws during this procedure.

### Step 3



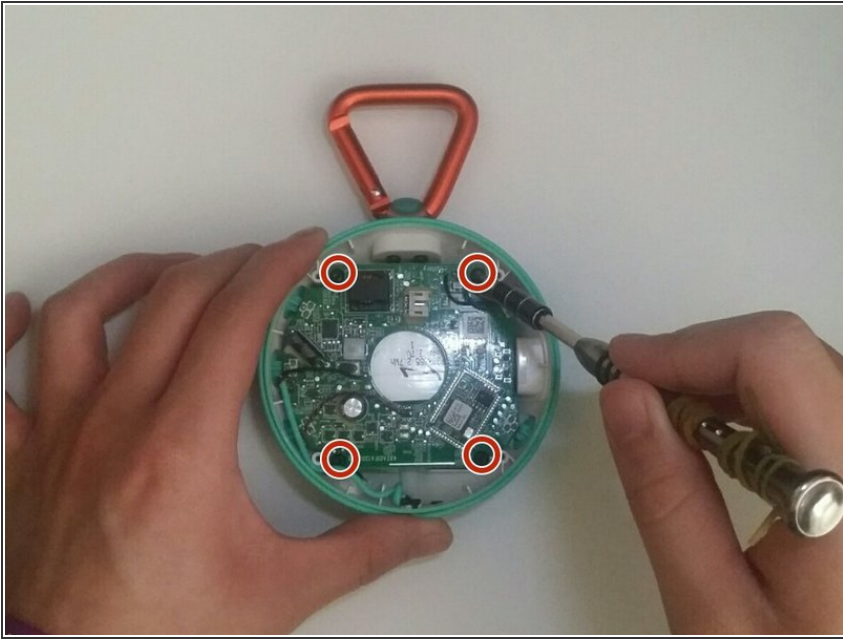
- The front cover will lift open easily and the components will be visible.

### Step 4



- To completely remove the top portion, disconnect the speaker from the motherboard using the blue plastic opening tool.
- ⚠ While disconnecting be sure to not use too much force as these two parts are meant to become disconnected.

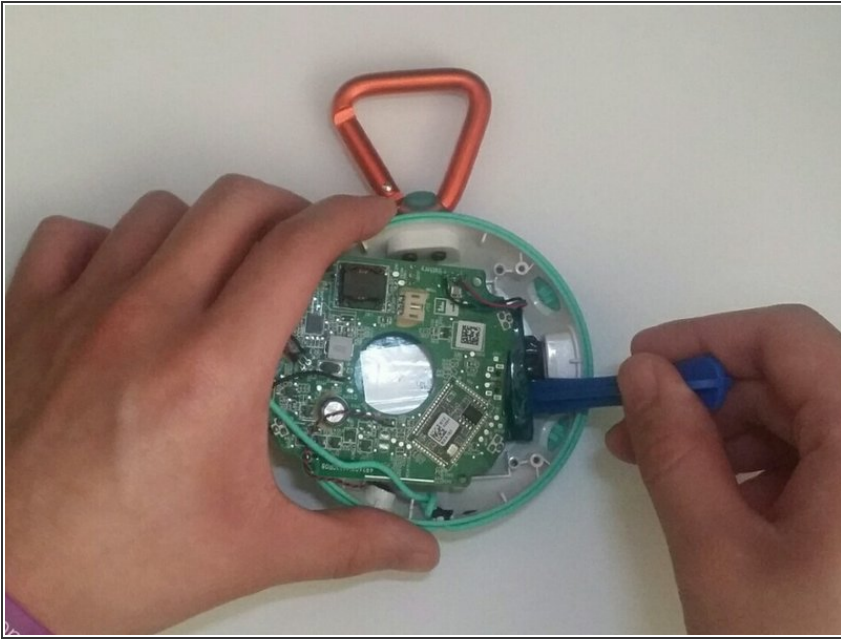
## Step 5



- There will be four 3 mm T8 screws holding the motherboard in place, remove these four screws.



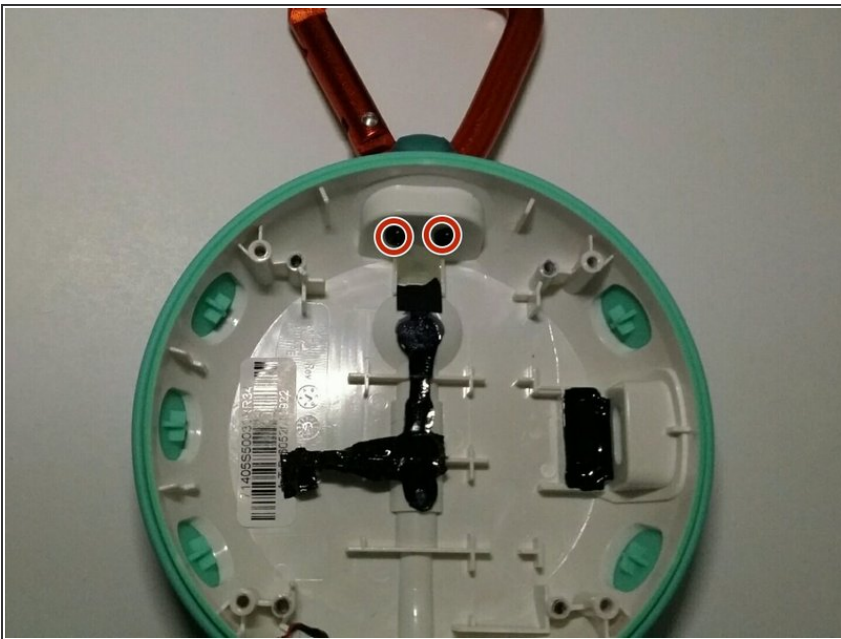
## Step 6



- Slightly move the motherboard to the side to reveal the sides of battery, carefully using the blue plastic opening tool, remove the battery from the speaker casing.

⚠ Be careful not to disconnect any soldered wires connected to the motherboard and speaker casing.

## Step 7



- There are two 3 mm T8 screws holding the carabineer in place, remove these two screws.

To reassemble your device, follow these instructions in reverse order.