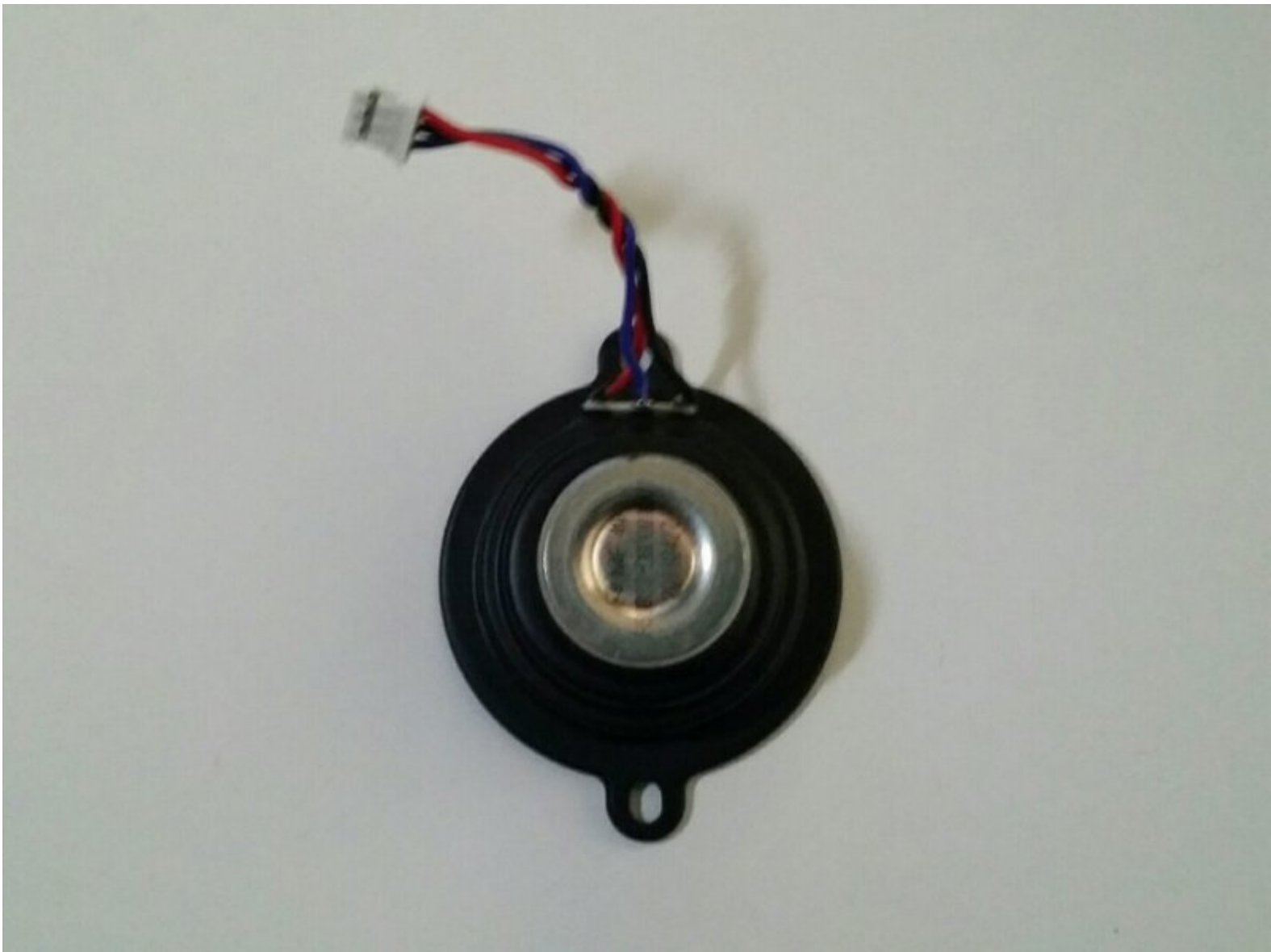




JBL Clip 2 Speaker Replacement

Replace your speaker to return your JBL Clip 2's ability to play music.

Written By: Michael Hong



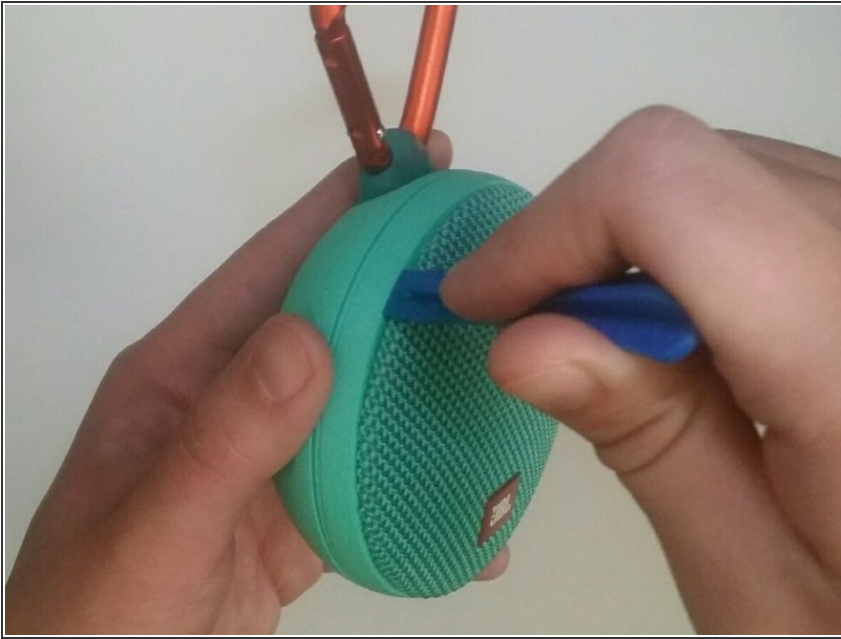
INTRODUCTION

The speaker in the JBL Clip 2 is removable. If the speaker does not work, you will notice that the device will not be able to produce any sound, even if the device is able to turn on. If this is the case the speaker will have to be replaced. The device will be taken apart and the speaker will be removed and replaced.


TOOLS:

- [iFixit Opening Tools](#) (1)
 - [T8 Torx Screwdriver](#) (1)
-

Step 1 — Speaker



- Begin by removing the front cap of the JBL Clip 2 by using the blue plastic opening tool to get in between the creases.

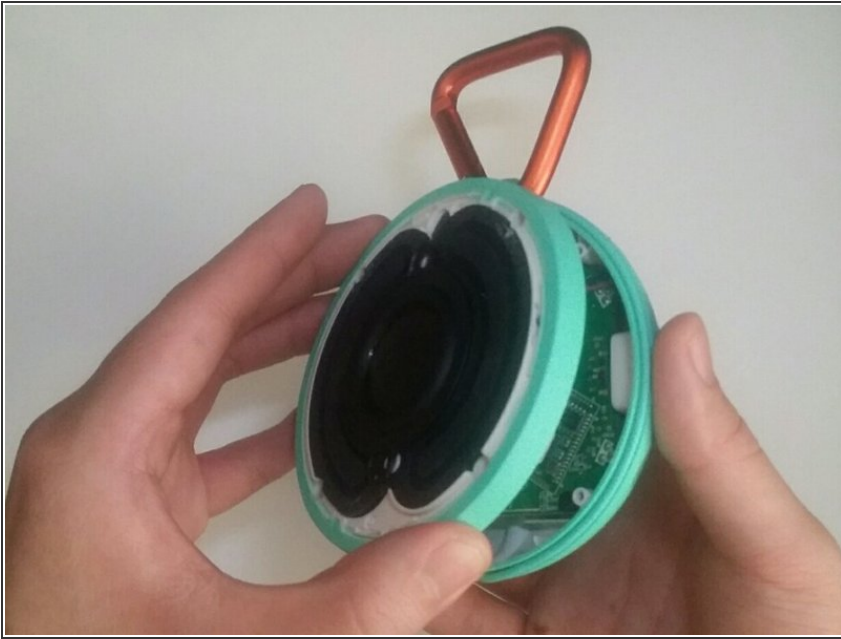
 If your JBL Clip 2 has never been opened this procedure will require moderate amount of force.

Step 2



- There will be six 3 mm T8 screws under the cap, remove these six screws.

Step 3



- The front cover will lift open easily and the components will be visible.

Step 4



- To completely remove the top portion, disconnect the speaker from the motherboard using the blue plastic opening tool.
- ⚠ While disconnecting be sure to not use too much force as these two parts are meant to become disconnected.

To reassemble your device, follow these instructions in reverse order.