



JBL Flip 3 Front Active Driver Replacement

This guide will walk through how to remove the front active driver from the JBL Flip 3.

Written By: College Student





TOOLS:

- [Spudger](#) (1)
-

Step 1 — Front Active Driver



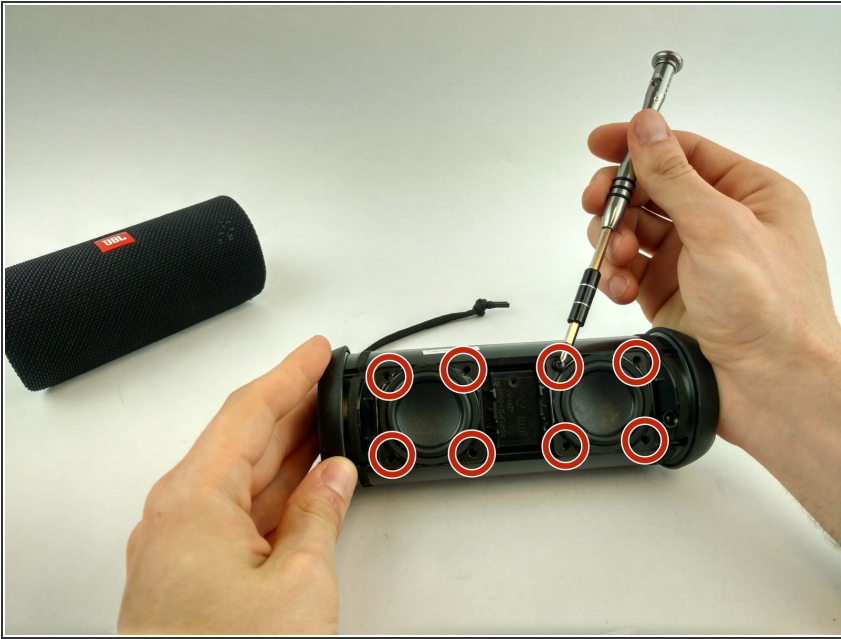
- Remove plastic outer housing using hands or a standard spudger.

Step 2



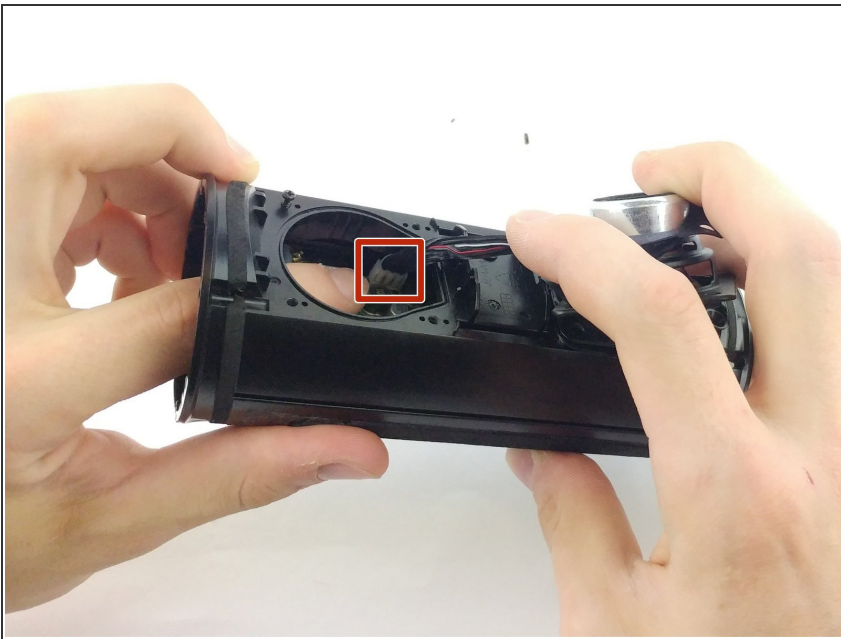
- Using your hands, carefully remove outer housing and frame to expose the internal workings of the speaker.

Step 3



- Remove the 8.9mm Phillips #00 screws on each corner of the driver to be replaced. There are four screws per driver. Be sure to set the screws somewhere safe to ensure they aren't lost.

Step 4



- Remove the 3-pin connector from motherboard.

To reassemble your device, follow these instructions in reverse order.