



JBL Flip 3 USB Chip Replacement

This guide will walk you through replacing the USB Port of your JBL Flip 3 Speaker device.

Written By: College Student





TOOLS:

- [Metal Spudger](#) (1)
 - [Phillips #00 Screwdriver](#) (1)
-

Step 1 — USB Chip



- Remove plastic outer housing using hands or a standard spudger.
- Important! Note the three alignment pins on the inner part of the housing. When reassembling, take special care to line these up and insert the pins into the receivers on the chassis prior to snapping the edges into place.

Step 2



- Carefully remove outer frame to expose the inner components of the speaker.

Step 3



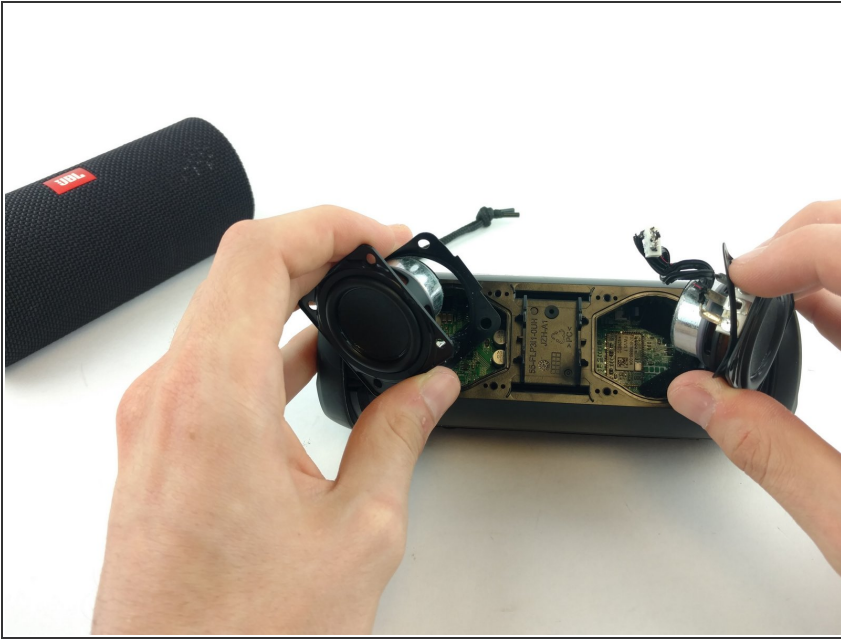
- loosen the screws to remove the outer frame

Step 4



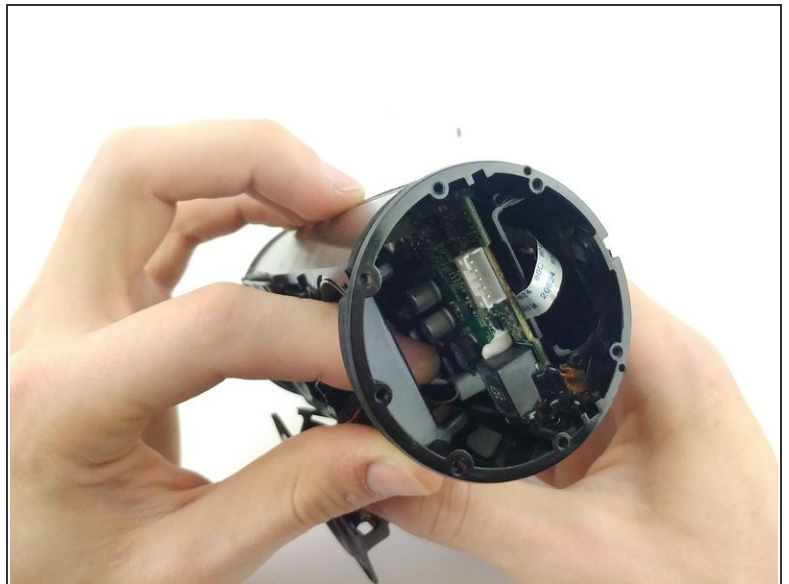
- Remove the 8 8.9mm Phillips #00 screws to unfasten the side passive drivers. Set the screws and side passive drivers aside safely.

Step 5



- Remove the [front drivers](#).

Step 6



- Remove the 3 pin connector from the USB chip.

Step 7



- remove screws to expose usb port

To reassemble your device, follow these instructions in reverse order.