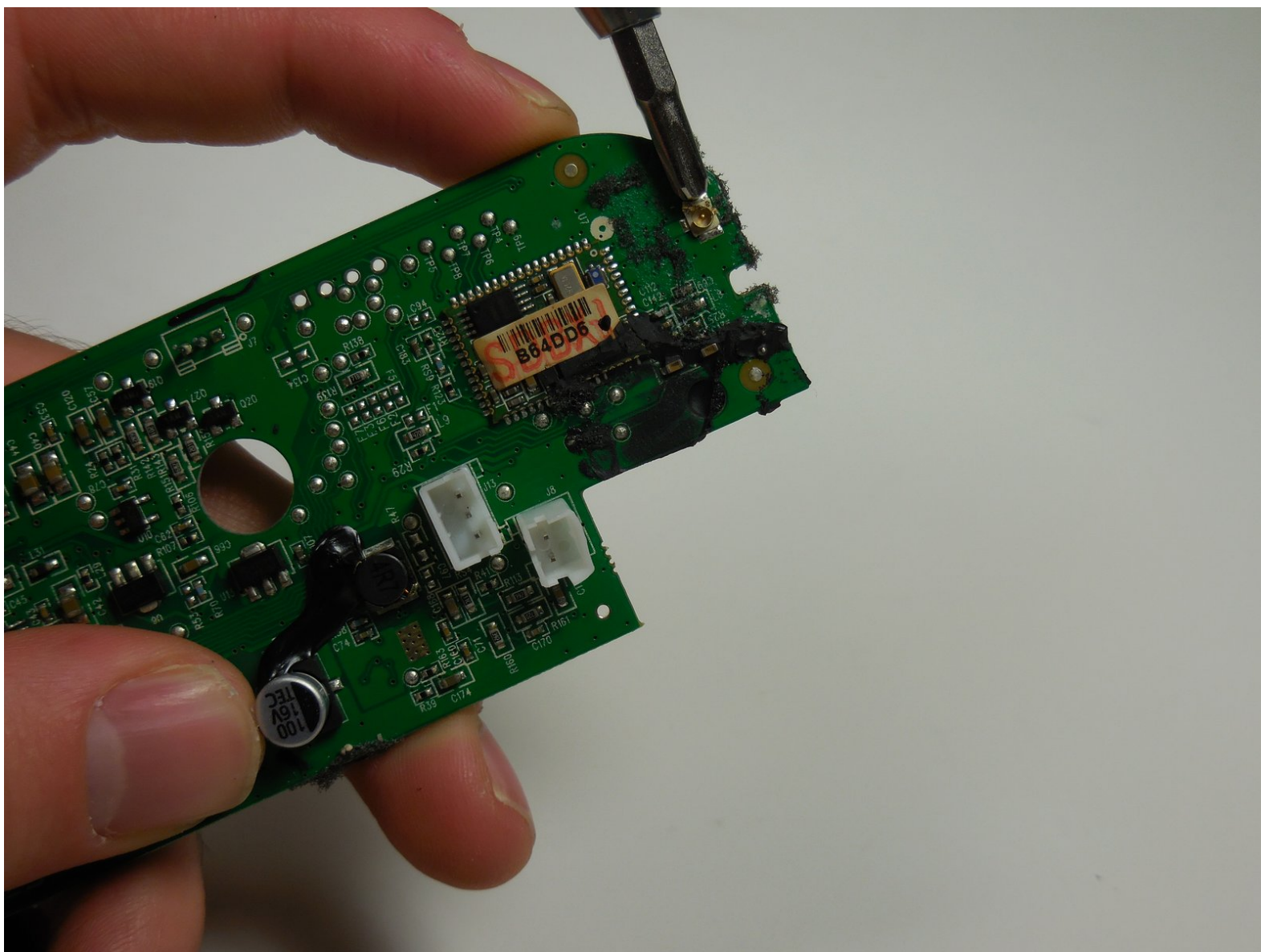




JBL Flip Bluetooth Antenna Replacement

This guide will be showing you how to fix the Bluetooth antenna if your JBL is having connectivity and range problems.

Written By: Dillon



INTRODUCTION

Within this guide users will be learning how to replace the Bluetooth antenna that the JBL Flip uses.

If you do not know how to safely solder/unsolder, please visit the following link [How To Solder and Desolder Connections](#).



TOOLS:

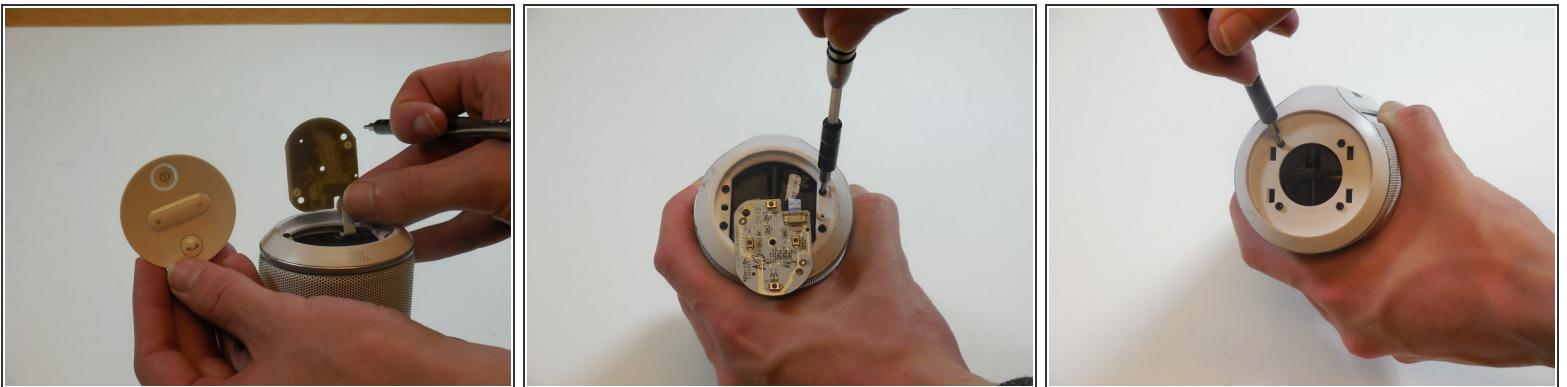
- [Portable Soldering Iron](#) (1)
 - [Soldering Wire](#) (1)
 - [Phillips #1 Screwdriver](#) (1)
 - [Phillips #2 Screwdriver](#) (1)
-

Step 1 — JBL Flip disassembly



- On the end with the buttons, remove the end cap using the flat head screwdriver to get between the rubber lining and the plastic.
- After the cap is removed, unscrew the two 3.3mm screws using a size 1 ph screw driver.

Step 2



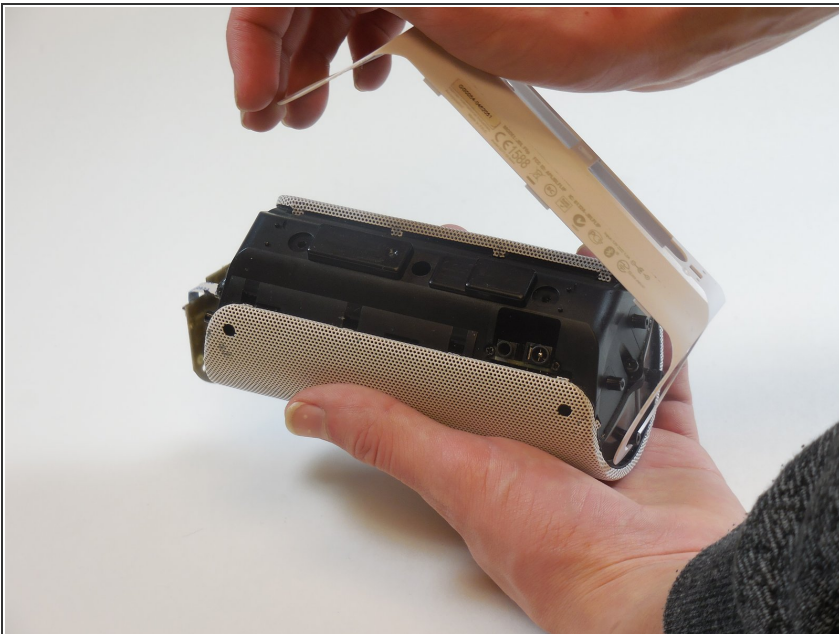
- Unscrew four 3.3mm screws on each end of the JBL using a size 1 ph screw driver (8 screws total).

Step 3



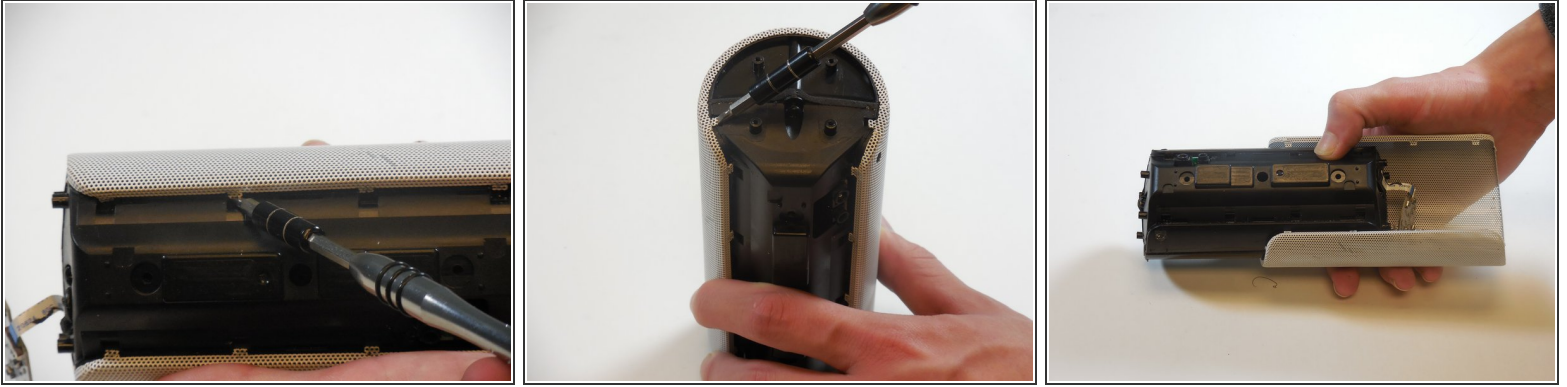
- Remove outermost white casing by gently lifting up on one side.
- Remove two 5mm screws holding the silver back plate in place with a size 2 ph screw driver.
- Gently lift up and remove the silver casing.

Step 4



- Remove last white back plate to expose the back of the speaker cover.

Step 5



- Pry the four tabs on each side of the speaker cover (8 tabs total).
- Pry the two tabs on each end to remove the cover (4 tabs total).
- Slide speaker out of metal speaker cover.

Step 6



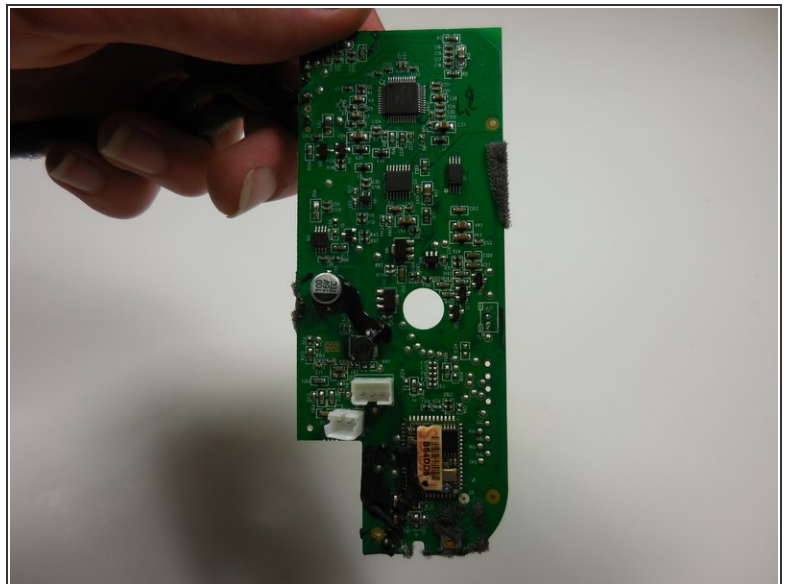
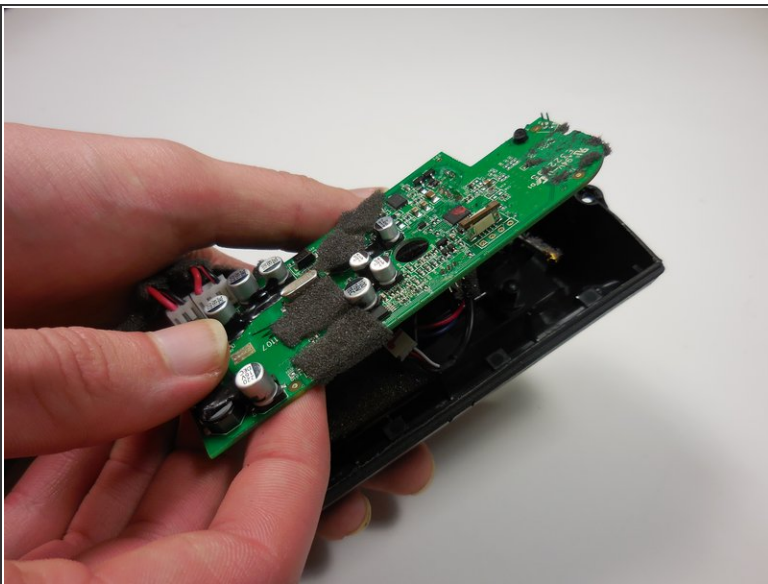
- Remove 5mm screw in the middle of the back of the device with a size 2 ph screw driver.
- Unscrew the two 5mm screws on each side using a size 2 ph screwdriver.
- Open the speaker.

Step 7 — Bluetooth Antenna




- Use the prerequisite guide for removing the speaker housing.

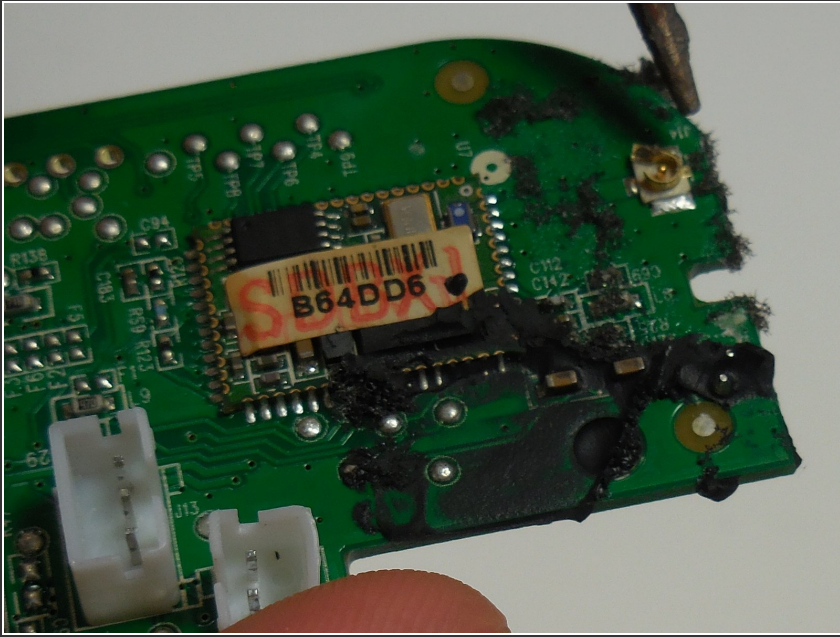
Step 8



- Disconnect all cables that are attached to the motherboard so that it resembles the step picture.

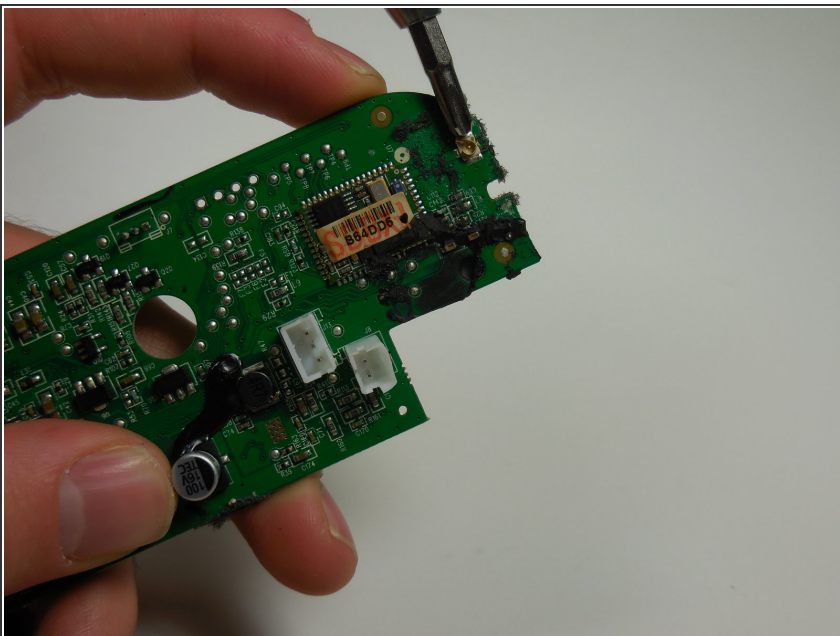
 Make sure that the battery is turned off before removing cables.

Step 9



- Locate the underside of the motherboard, where a large square chip is.

Step 10



- Use the soldering iron to solder a new wire ending in a copper track on to the circular antenna located next to the main programming chip.
- ⚠ Soldering iron will be very hot.
- Let the solder cool for 30-60 seconds.

To reassemble your device, follow these instructions in reverse order.