



# JBL Flip Button panel disassembly

This guide will show users how to access and fix the button sensors inside of the JBL Flip.

Written By: Dillon



---

## INTRODUCTION

Users will learn how to solve and fix a problem that can occur with the buttons on the JBL Flip.

---



### TOOLS:

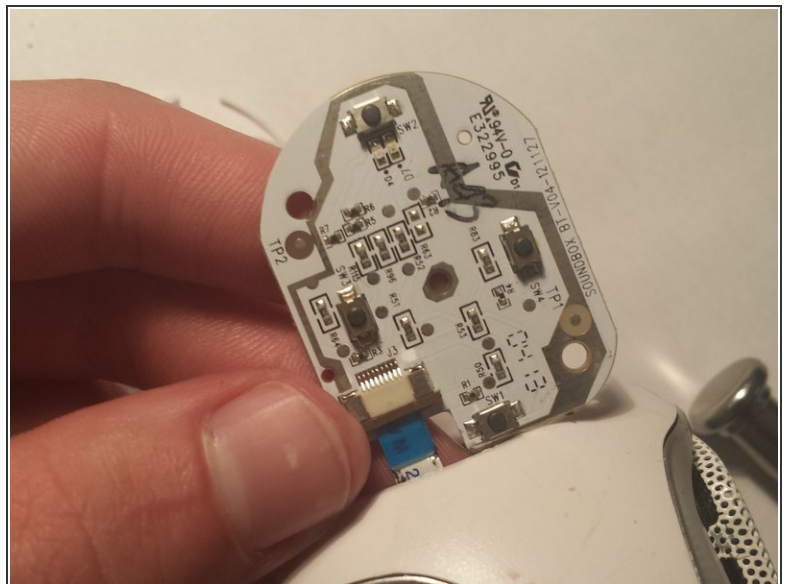
- [Phillips #1 Screwdriver](#) (1)
-

## Step 1 — JBL Flip Button panel disassembly



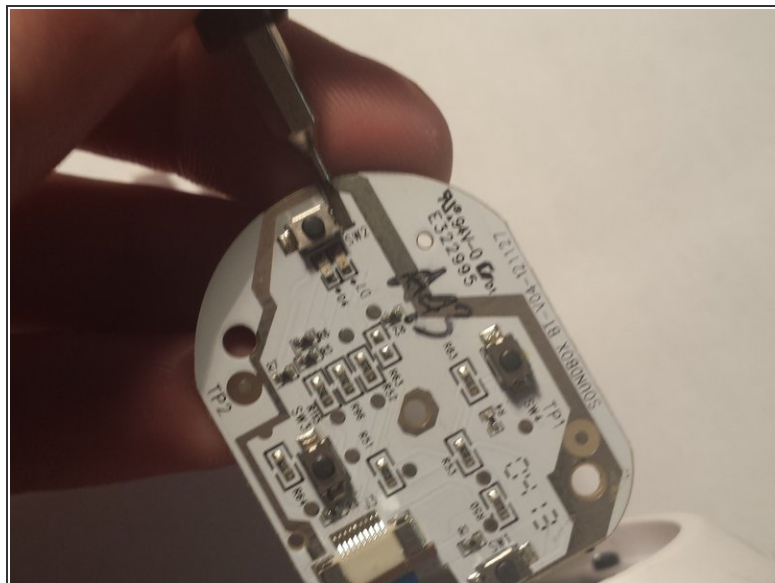
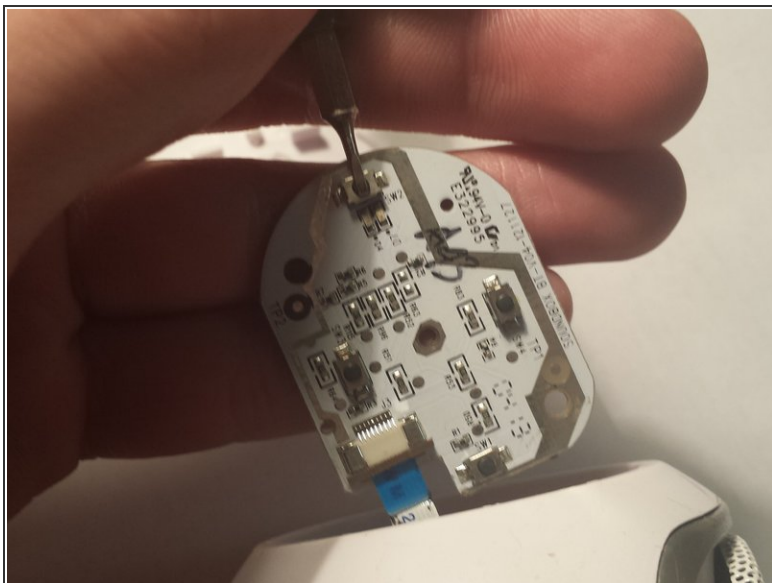
- Use a flat head screw driver to pop open cap.

## Step 2



- Using a size 1 PH screw driver, unscrew the two 3.3mm screws holding the cap on.

## Step 3



- Press down on button until a clicking sound is heard.
- Press down on metal tabs around button to re-secure button.

To reassemble your device, follow these instructions in reverse order.