



JBL Flip Speaker Replacement

We will be showing you how to replace the inner speaker from the flip to fix or improve sound quality.

Written By: Dillon



INTRODUCTION

Within this guide the user will learn and follow the steps to replace the internal speakers of the JBL Flip. A soldering iron will be used to unsolder some wired connections. To safely use the soldering iron please visit this desoldering guide [How To Solder and Desolder Connections](#).

TOOLS:

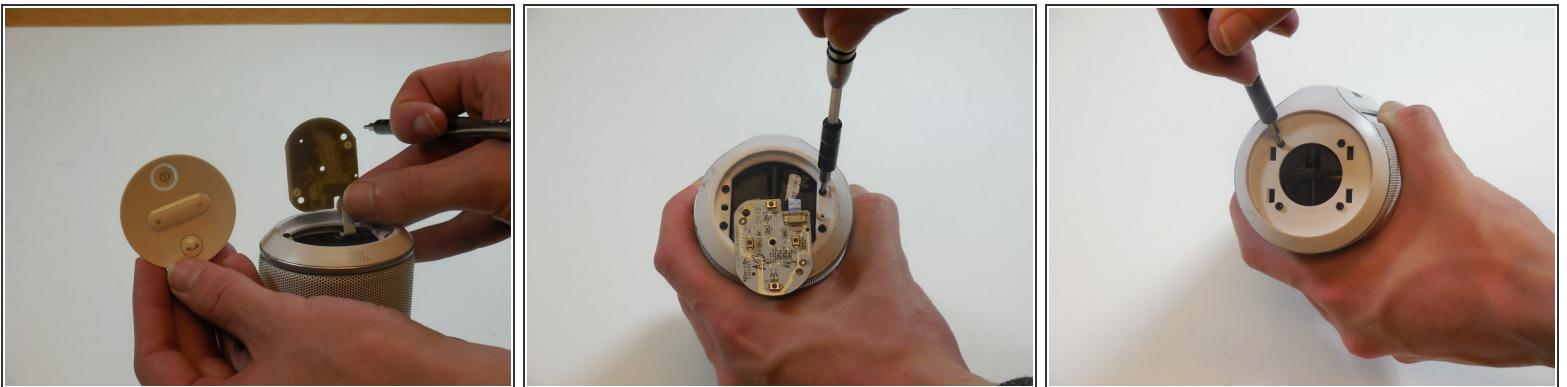
- [Soldering Iron](#) (1)
 - [Phillips #1 Screwdriver](#) (1)
 - [Phillips #2 Screwdriver](#) (1)
-

Step 1 — JBL Flip disassembly



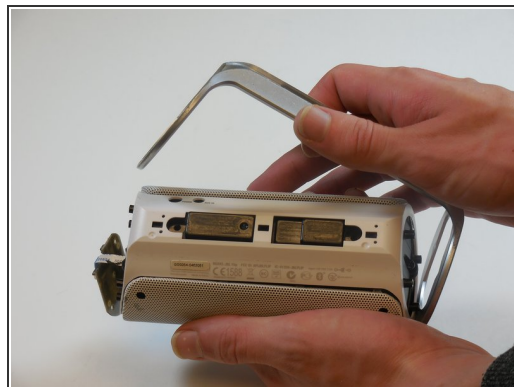
- On the end with the buttons, remove the end cap using the flat head screwdriver to get between the rubber lining and the plastic.
- After the cap is removed, unscrew the two 3.3mm screws using a size 1 ph screw driver.

Step 2



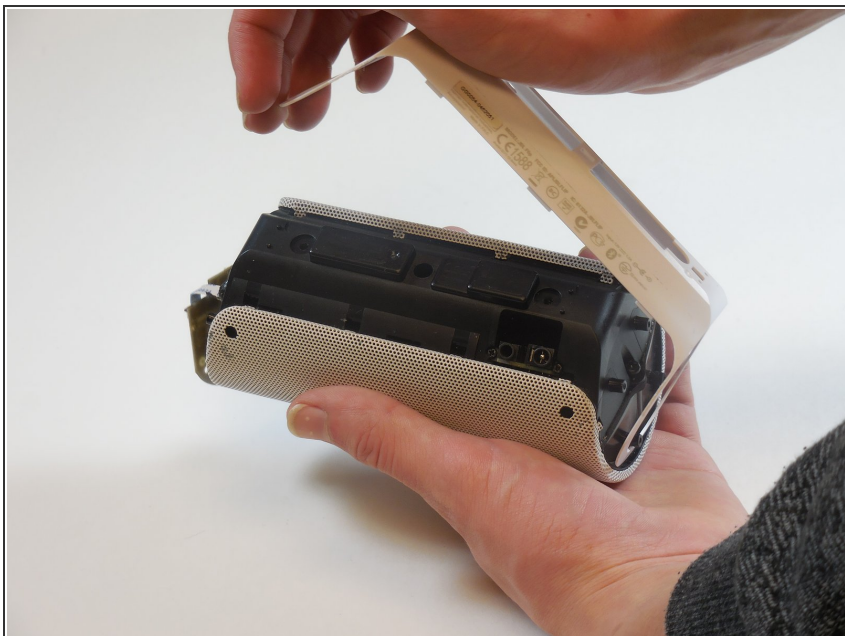
- Unscrew four 3.3mm screws on each end of the JBL using a size 1 ph screw driver (8 screws total).

Step 3



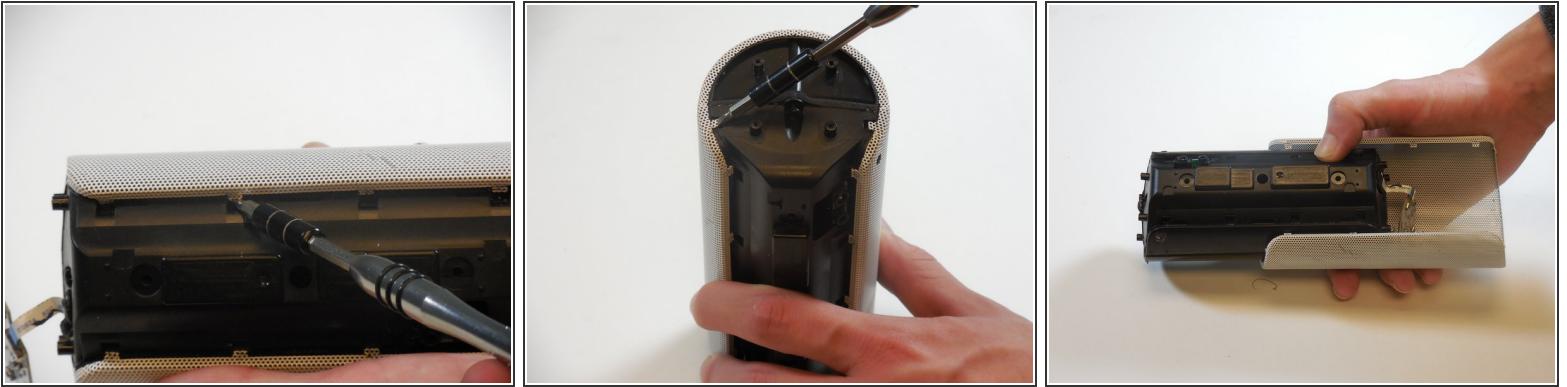
- Remove outermost white casing by gently lifting up on one side.
- Remove two 5mm screws holding the silver back plate in place with a size 2 ph screw driver.
- Gently lift up and remove the silver casing.

Step 4



- Remove last white back plate to expose the back of the speaker cover.

Step 5



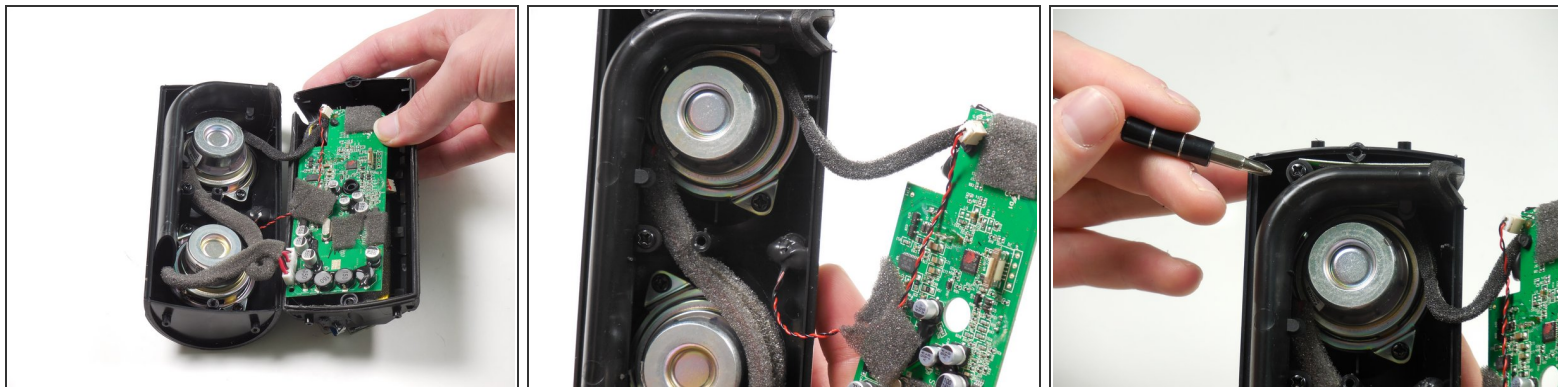
- Pry the four tabs on each side of the speaker cover (8 tabs total).
- Pry the two tabs on each end to remove the cover (4 tabs total).
- Slide speaker out of metal speaker cover.

Step 6



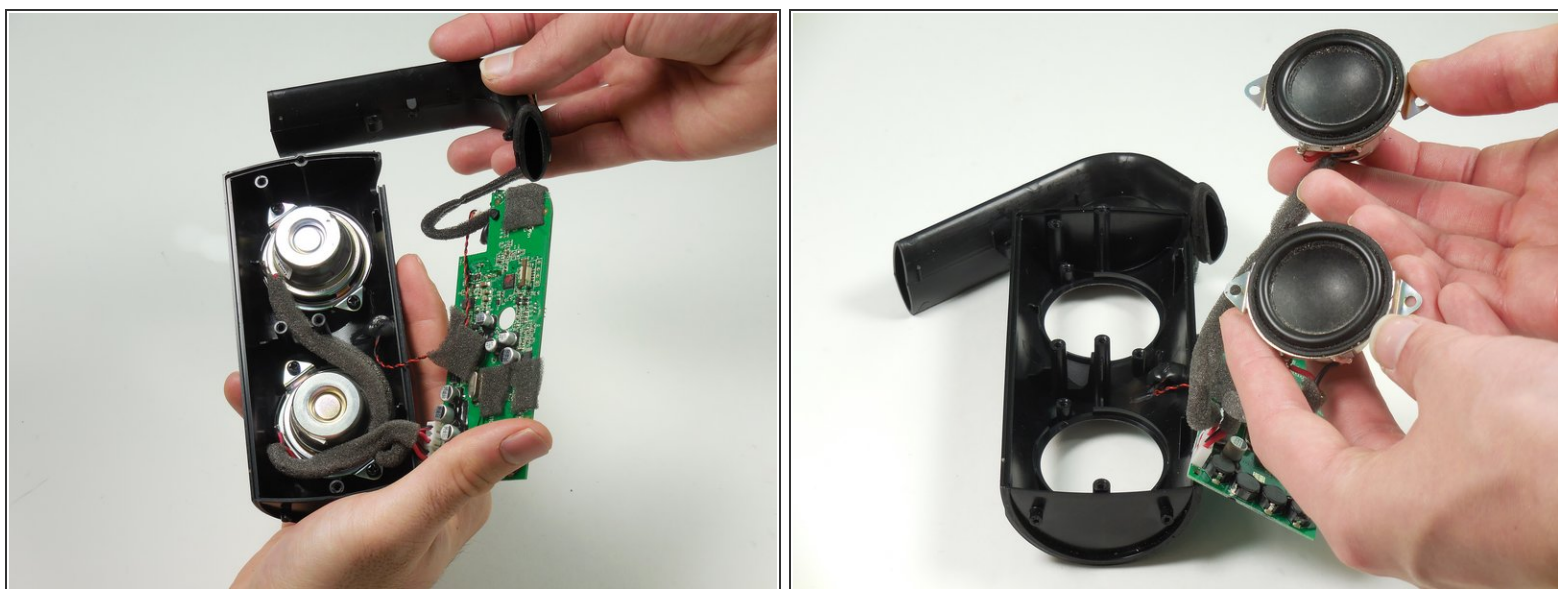
- Remove 5mm screw in the middle of the back of the device with a size 2 ph screw driver.
- Unscrew the two 5mm screws on each side using a size 2 ph screwdriver.
- Open the speaker.

Step 7 — Speaker



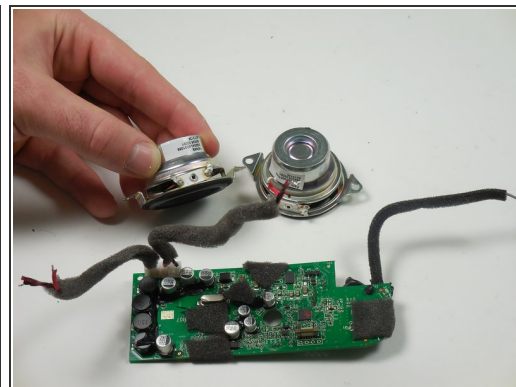
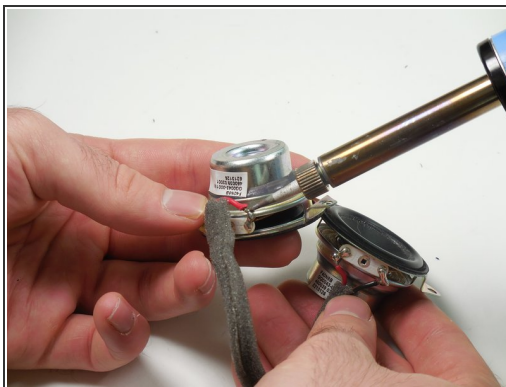
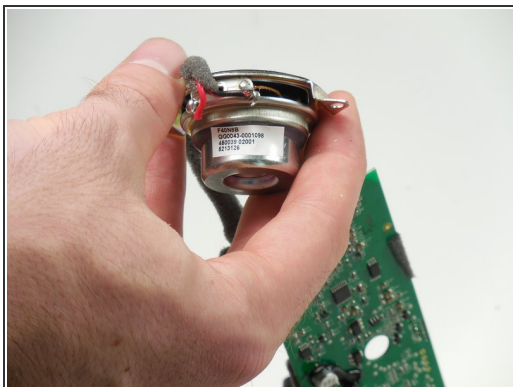
- Remove screws that hold the plastic L-pipe in place.

Step 8



- Remove L-pipe.
- Remove two screws on each speaker.
- Remove speakers.

Step 9



- Take a soldering iron to the two solders, one for each cable.

⚠ Soldering iron will be very hot.

- Once the soldering has melted, remove each wire from the speaker.

To reassemble your device, follow these instructions in reverse order.