



JBL On Stage II 30-Pin Connector Replacement

Replace the connector that brings your music to life.

Written By: Janessa D Cabrera



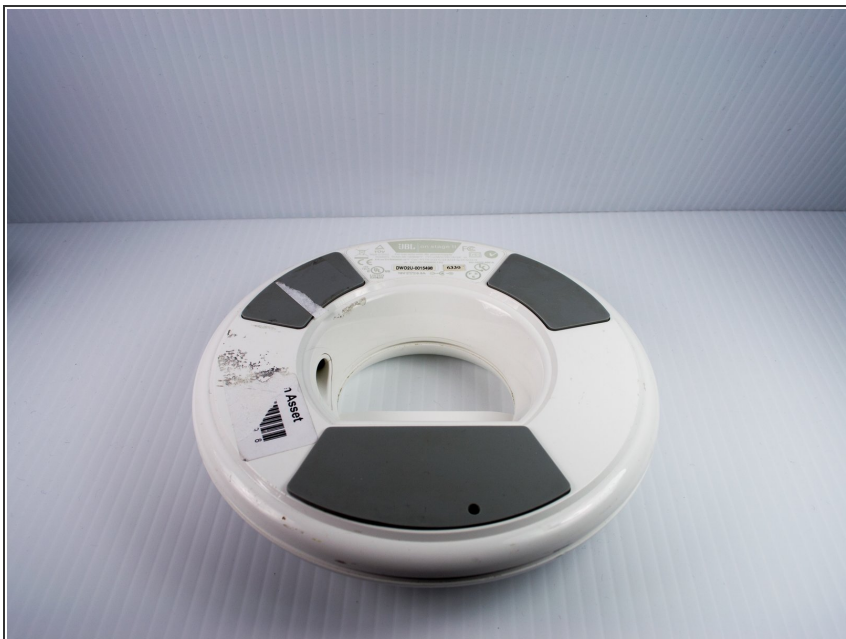
INTRODUCTION

This guide provides the steps necessary in order to replace the thirty-pin connector.

TOOLS:

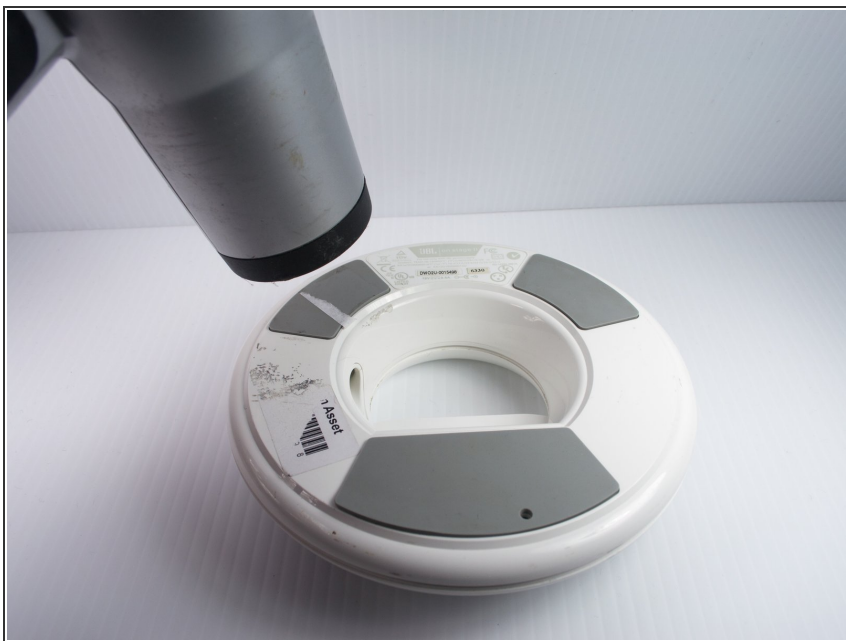
- [Heat Gun](#) (1)
 - [Metal Spudger Set](#) (1)
 - [Glue Gun](#) (1)
 - [Tweezers](#) (1)
 - [T-10 Torx Screwdriver](#) (1)
-

Step 1 — Cracking the Case



- Turn the device upside down so that the three rubber pads are facing up.

Step 2



- Use a heat gun (set to low) to apply heat to one of the rubber pads until you can easily remove the pad. This step takes around 5-7 minutes.

Step 3



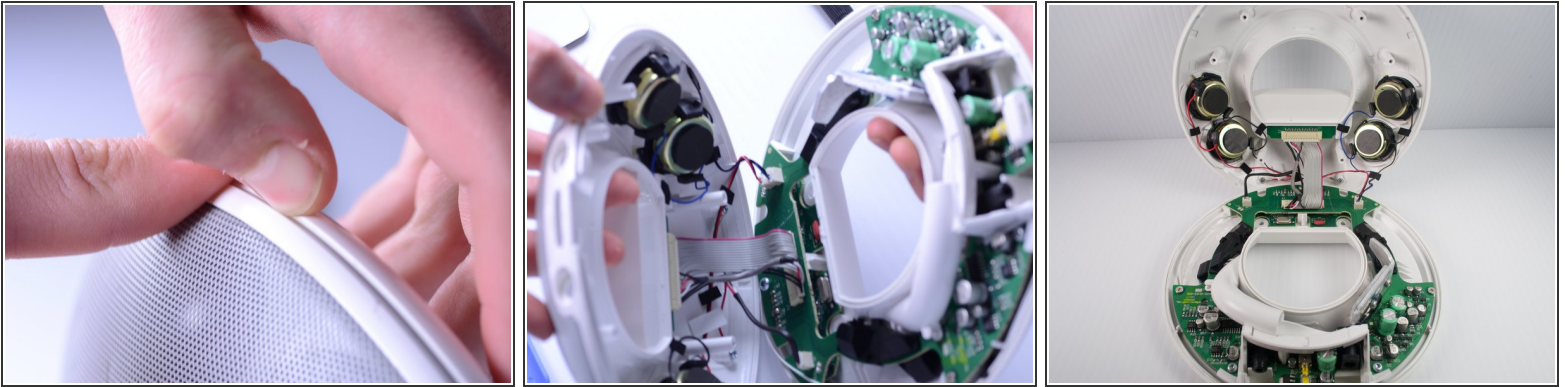
- Remove the heated rubber pad with a plastic opening tool.
- Repeat steps 2 and 3 for the two remaining rubber pads.

Step 4



- Remove the six 1cm T-10 torx screws on the bottom of the device (found under the rubber pads) using a T-10 Torx screwdriver.

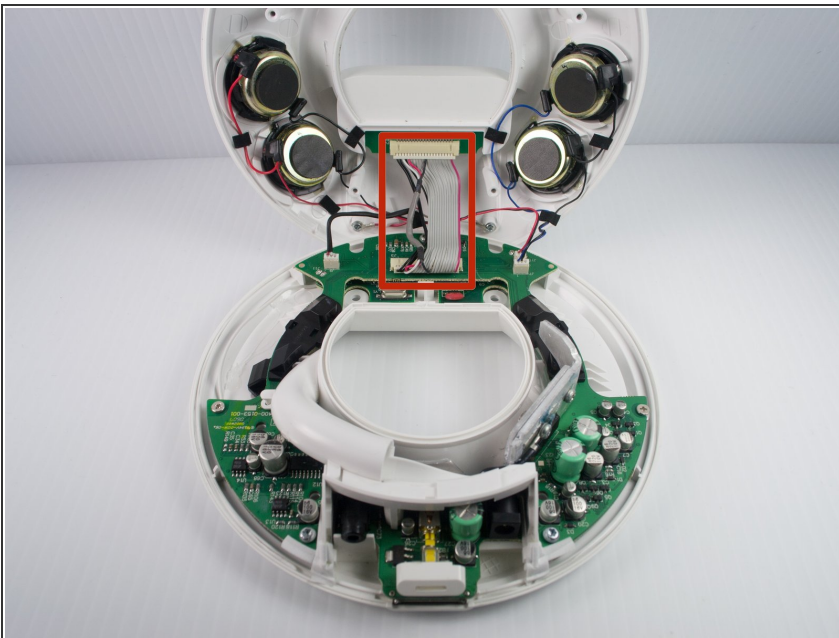
Step 5



- Open the device along its seam.

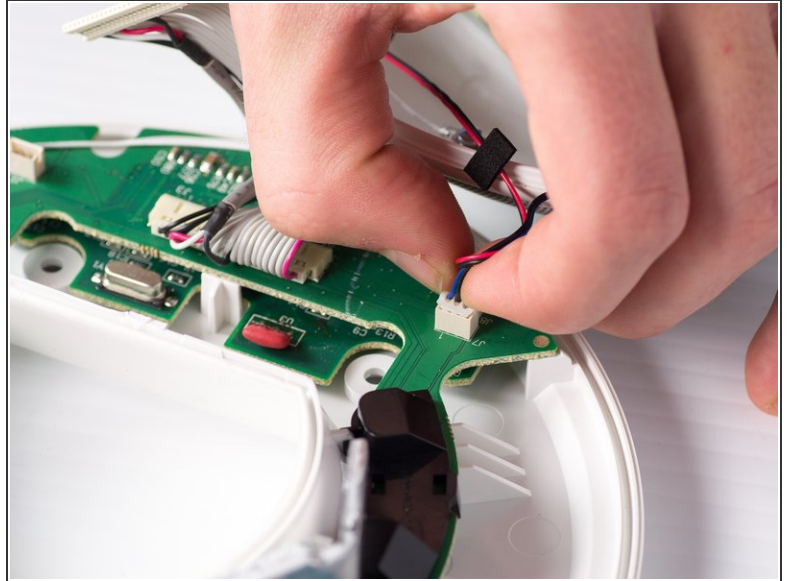
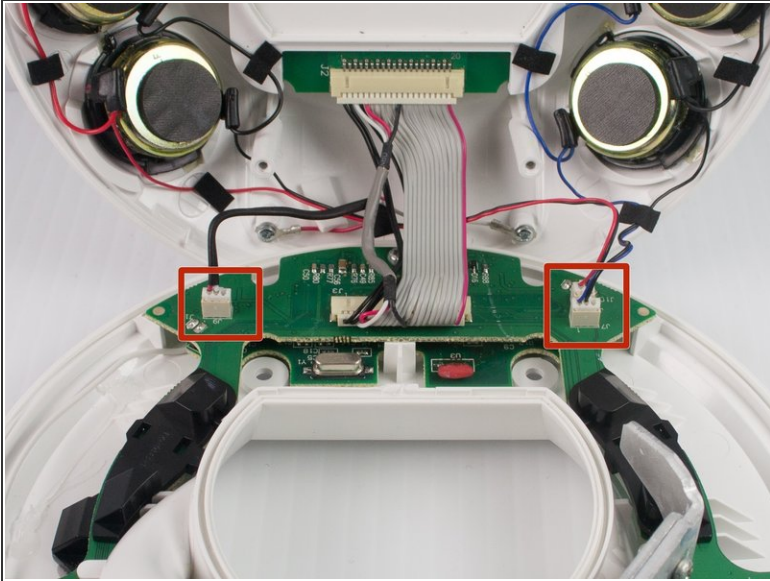
⚠ Be careful when separating the device because there are wires connecting the two separate halves.

Step 6



- Disconnect the ribbon cable connector from the top half of the device by pulling outward and parallel to the connecting pins.

Step 7



- Locate and disconnect the two molex connectors found on either side of the ribbon cable connector on the bottom half of the device.

Step 8 — 30-Pin Connector Replacement



- Apply heat with a heatgun on a low setting to the area around the 30-pin connector until you can easily pry it out by the seam surrounding it (about 10 minutes).

Step 9



- Use a metal spudger to pry out the plastic surrounding the 30-pin connector.

Step 10



- Use a pair of tweezers to wiggle out the 30-pin connector.

To reassemble your device, follow these instructions in reverse order.