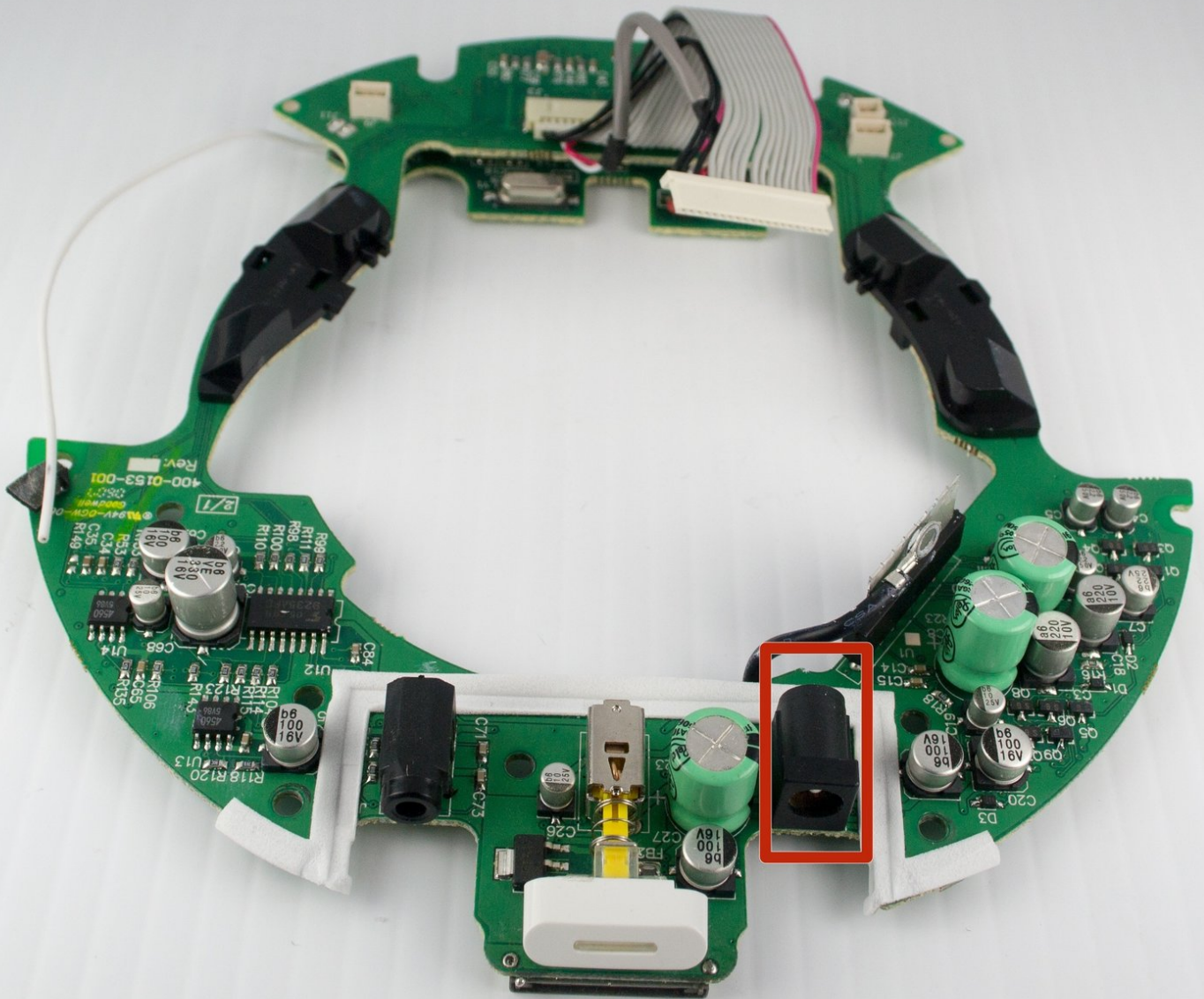




JBL On Stage II Power Jack Replacement

This will guide you through the process of removing and replacing the power jack.

Written By: Jared Everingham



INTRODUCTION

To complete this guide, you will need to disassemble your device and use a soldering iron to replace the power jack.



TOOLS:

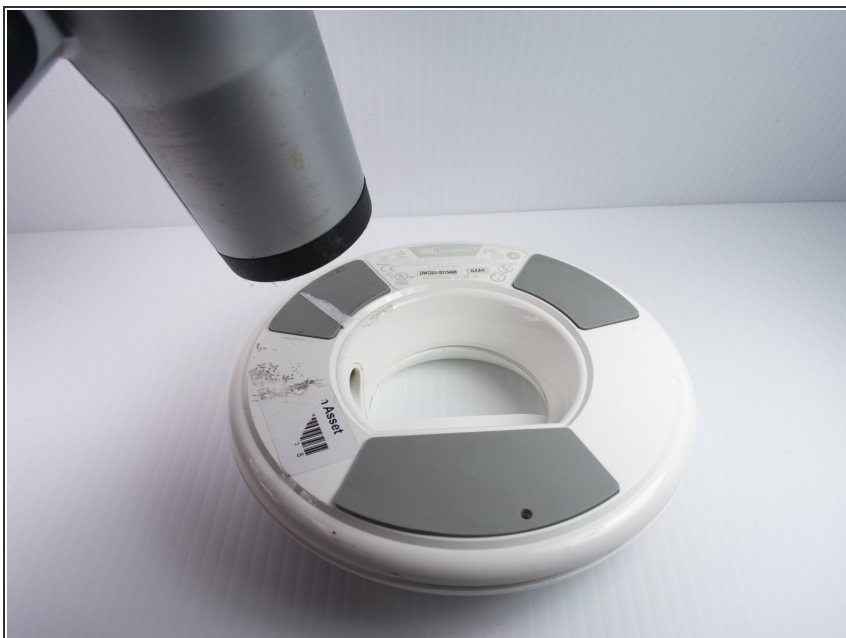
- [Heat Gun](#) (1)
 - [T-10 Torx Screwdriver](#) (1)
 - [Socket 5.5 mm](#) (1)
 - [.25" Socket Wrench](#) (1)
 - [Phillips #1 Screwdriver](#) (1)
 - [Flush Wire Cutters](#) (1)
 - [Soldering Workstation](#) (1)
-

Step 1 — Cracking the Case



- Turn the device upside down so that the three rubber pads are facing up.

Step 2



- Use a heat gun (set to low) to apply heat to one of the rubber pads until you can easily remove the pad. This step takes around 5-7 minutes.

Step 3



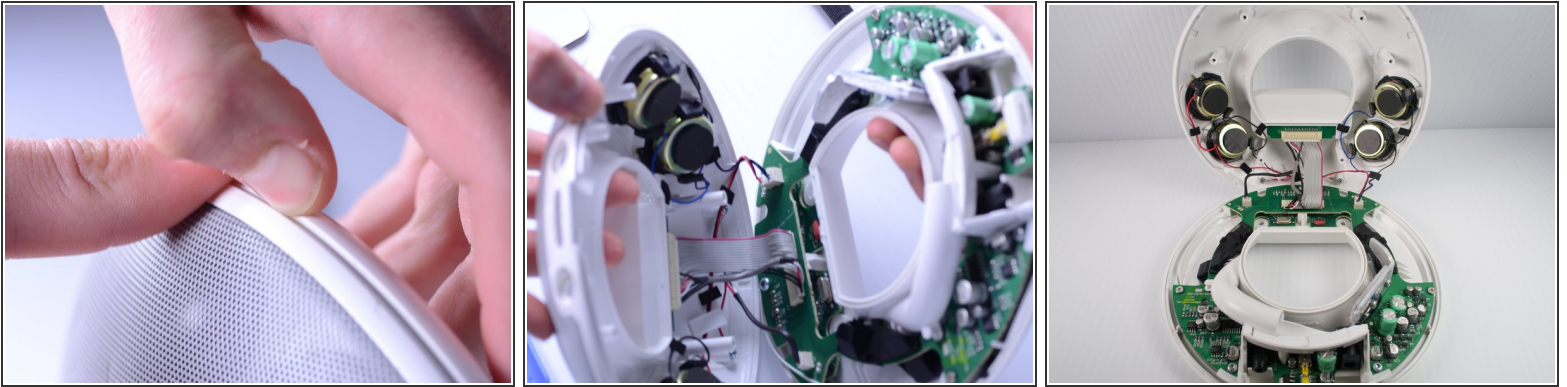
- Remove the heated rubber pad with a plastic opening tool.
- Repeat steps 2 and 3 for the two remaining rubber pads.

Step 4



- Remove the six 1cm T-10 torx screws on the bottom of the device (found under the rubber pads) using a T-10 Torx screwdriver.

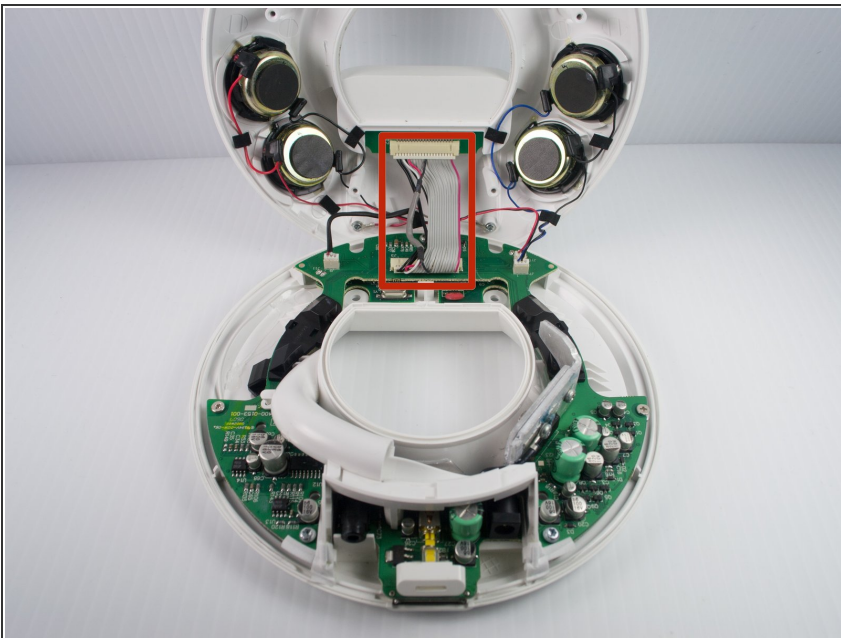
Step 5



- Open the device along its seam.

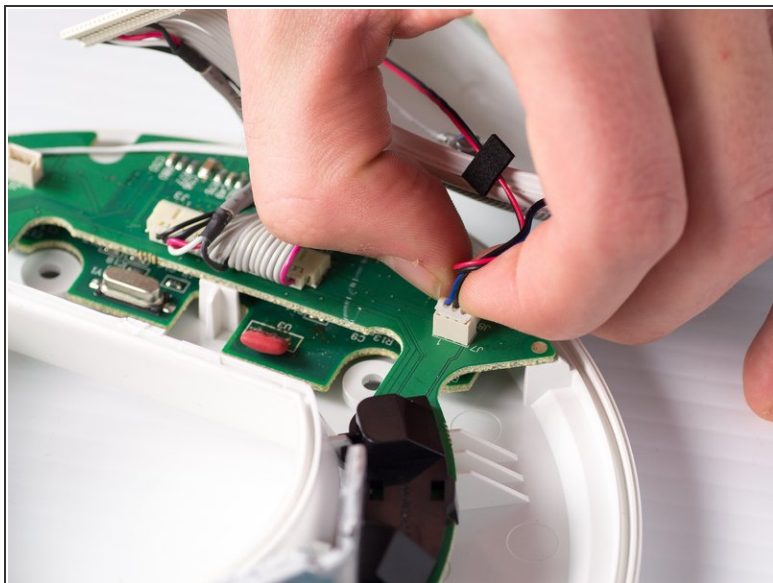
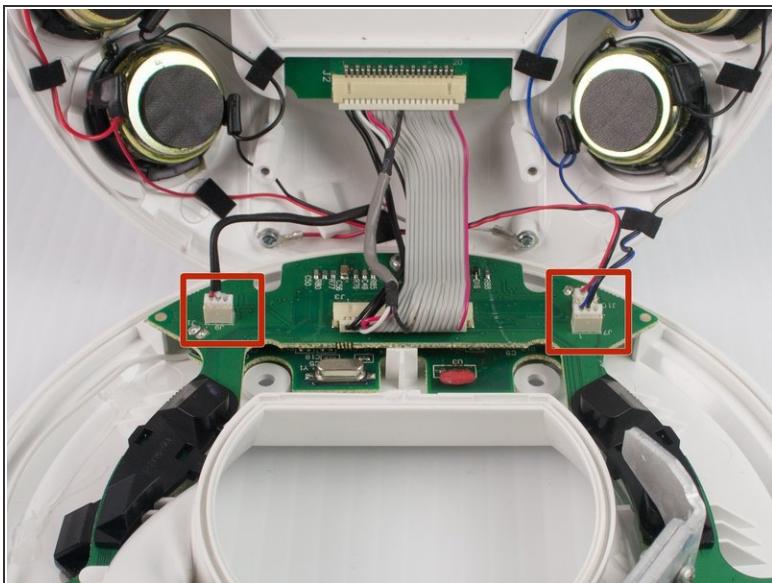
⚠ Be careful when separating the device because there are wires connecting the two separate halves.

Step 6



- Disconnect the ribbon cable connector from the top half of the device by pulling outward and parallel to the connecting pins.

Step 7



- Locate and disconnect the two molex connectors found on either side of the ribbon cable connector on the bottom half of the device.

Step 8 — Circuit Board



- Remove the three 1 cm T-10 Torx screws.

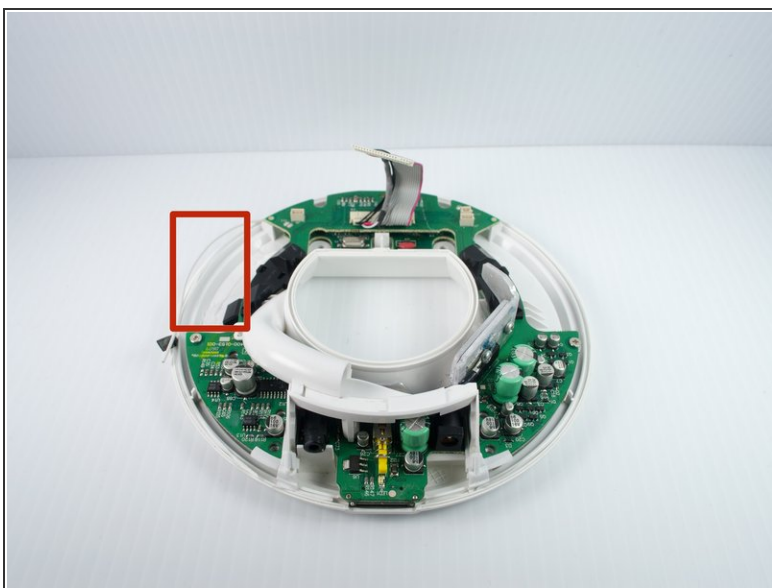
Step 9



- Carefully press out the white base tube and push up on the circuit board.

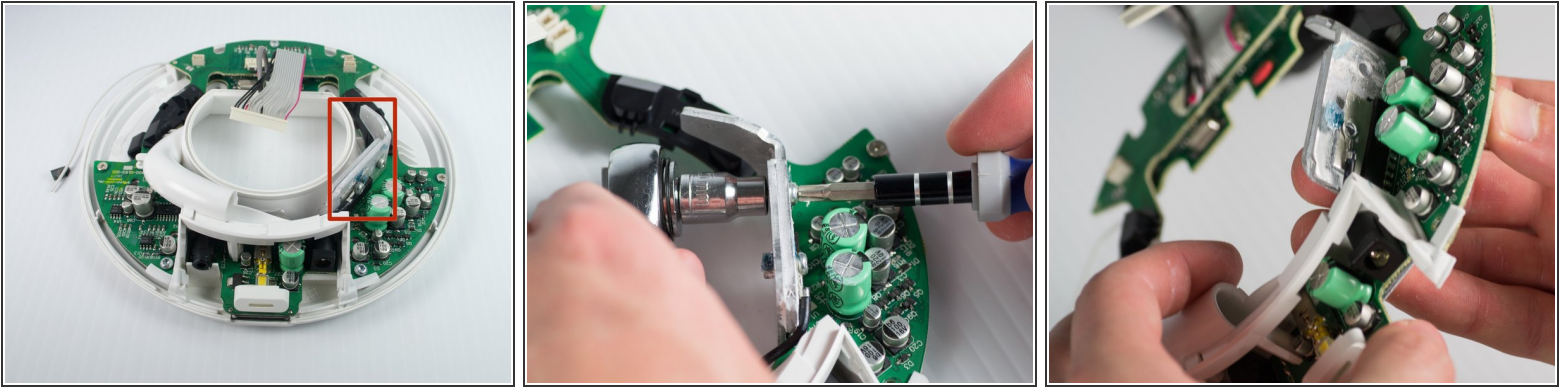
⚠ Note that there is a small wire connecting the circuit board to the base.

Step 10



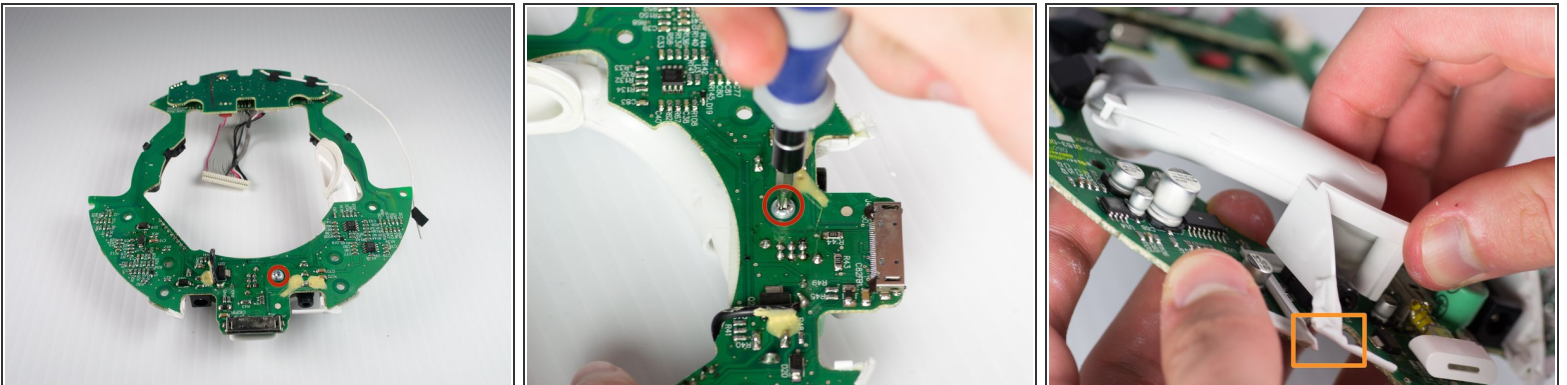
- Pull the white wire out of the hot glue.

Step 11



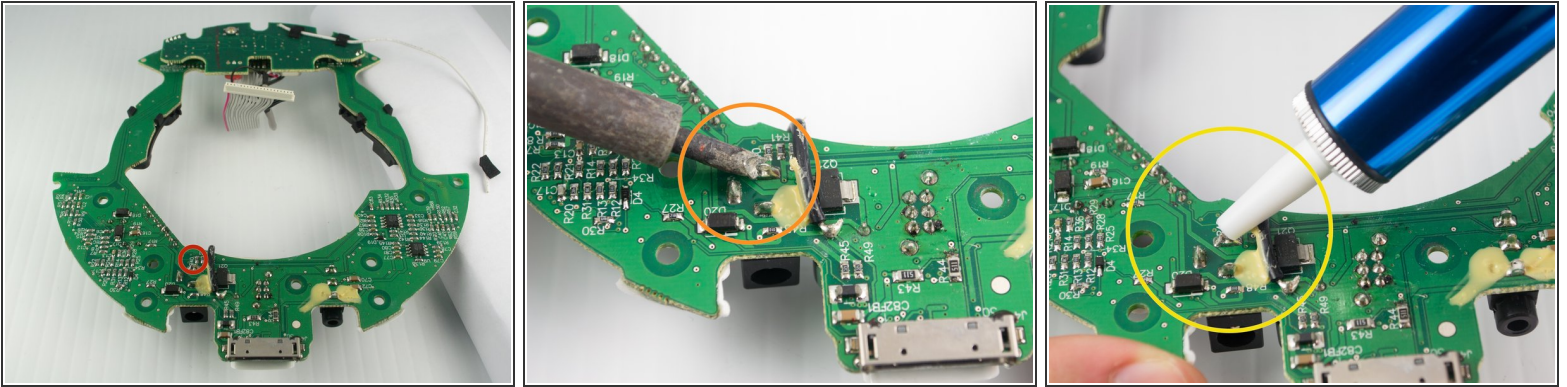
- Unbolt the heatsink with a 5.5-mm socket and a Phillips PH1 screwdriver.
- Remove the heat sink; it should detach from the bottom of the device.


Step 12



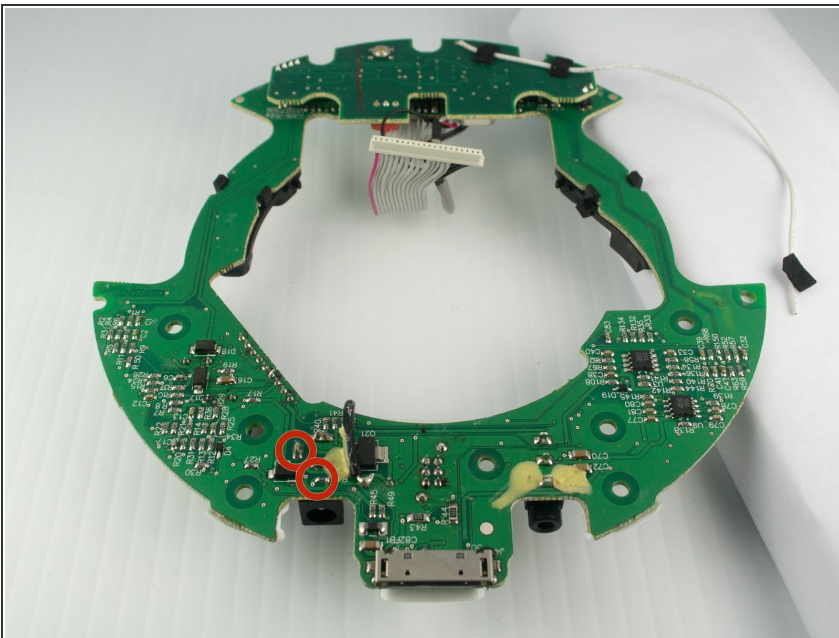
- Remove the T-10 torx screw on the bottom of the device that attaches the base tube to the circuit board.
- Turn the device so that the base tube is on top.
- Remove the base tube by pulling up.
- May need to cut the rubber adhesive between the base tube to the circuit board.

Step 13 — Power Jack



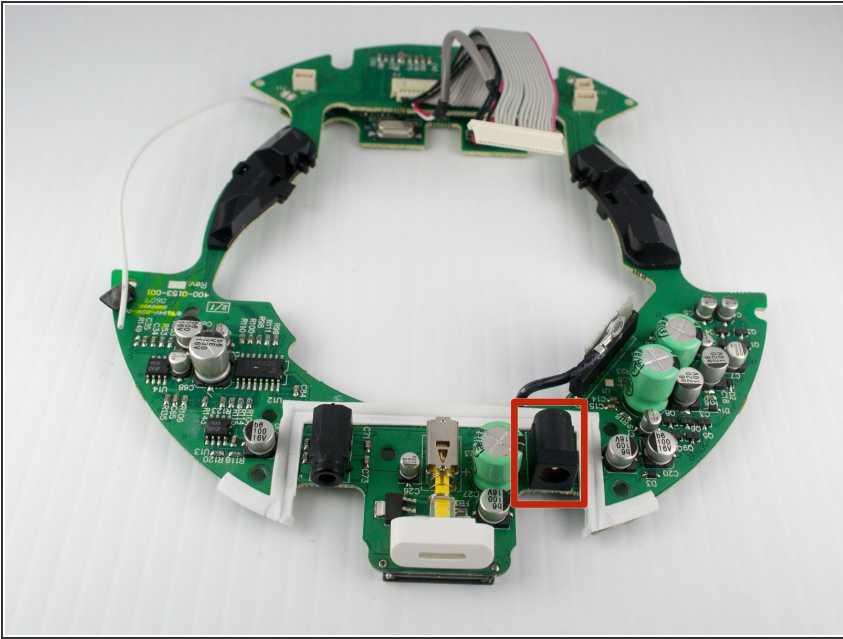
- Turn the device upside down.
 - Solder the back lead of the power jack until the solder melts.
 - Heat the lead until the solder melts.
 - Remove the solder with the desoldering pump.
-  For help with soldering view the iFixit [soldering guide](#)

Step 14



- Repeat step 13 for the other two leads

Step 15



- Remove the power jack.

Replace the power jack with the new jack and resolder the leads. Follow the steps in reverse order to reassemble your device