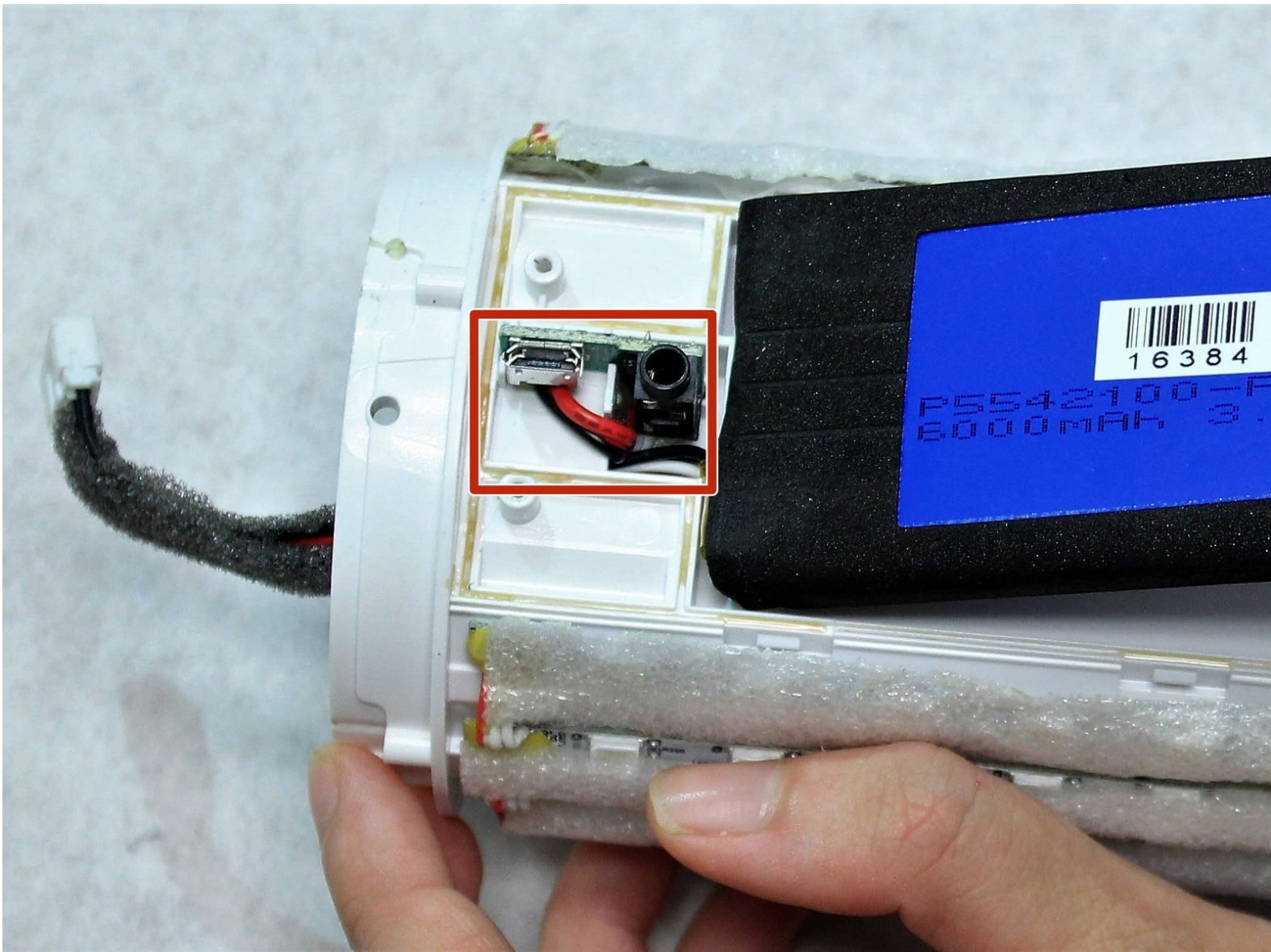




# JBL Pulse 2 Auxiliary and Micro USB Port Replacements

This guide will show you the steps necessary to replace the auxiliary and micro USB ports for the JBL Pulse 2.

Written By: Emilee Hicks



## INTRODUCTION

If you experience any difficulties with charging or playing music through an auxiliary cable, you may need to replace your JBL Pulse 2 speaker's auxiliary and micro USB ports.

---

### TOOLS:

- [Tweezers](#) (1)
  - [Phillips #1 Screwdriver](#) (1)
  - [Metal Spudger](#) (1)
  - [Spudger](#) (1)
  - [Soldering Workstation](#) (1)
-

## Step 1 — Battery



- Remove the rubber rings from either end of the device.
- If there is difficulty in lifting the rings from the device, use the metal spudger.

## Step 2



- Remove the four 4.8mm Phillips #1 screws from each end of the device with the Phillips head screwdriver.
- Lift the end pieces off of the device.



### Step 3



- Remove the four 9.5mm Phillips #1 screws from each end of the device.

### Step 4



- Peel one end off and slowly draw it across the length of the device until you get to the other side.

## Step 5



- Remove the four 7.9mm Phillips #1 screws along the black centerpiece of the device between the camera and the auxiliary port.
- Lift up the casing and circuit board but do not try and remove the ribbon wires.

## Step 6



- Remove the cover from the end that the ribbon wires are attached to. It should peel off easily.

## Step 7



- Unlatch the mechanism holding the ribbon wires in place, then disconnect them from the motherboard.
- To access the wires, remove some of the black glue holding them in place with the spudger.



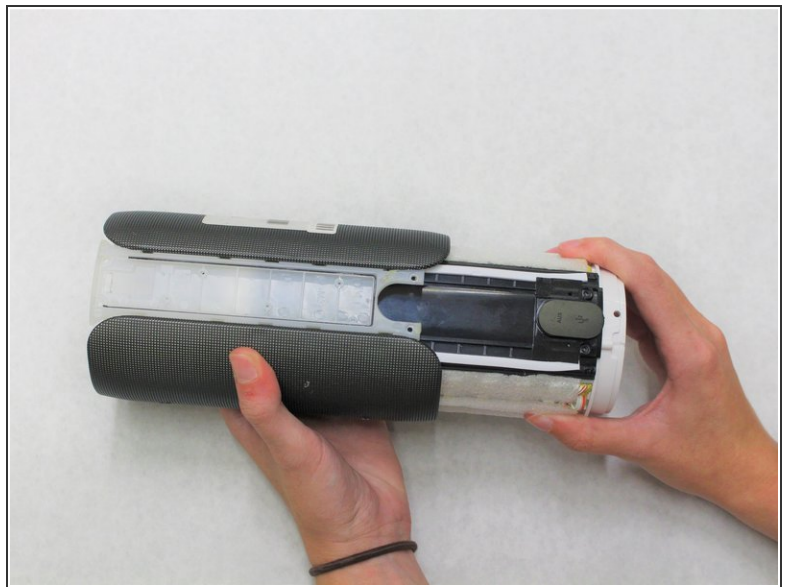
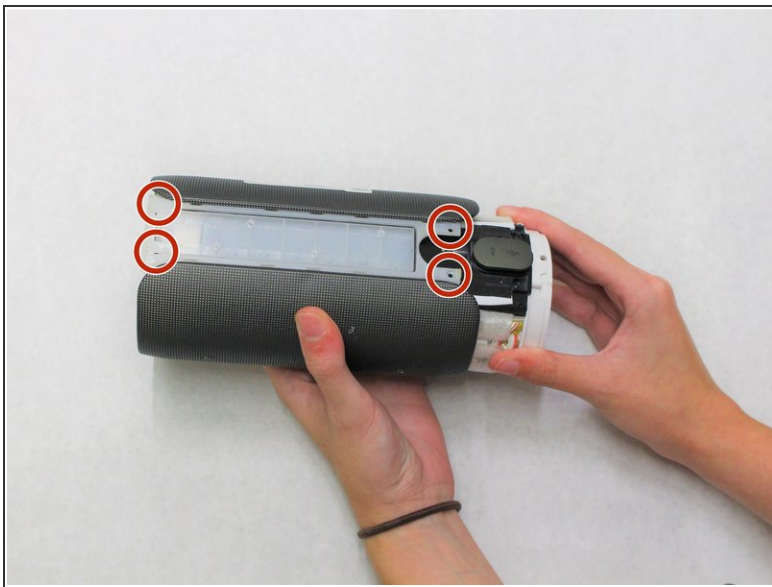
## Step 8



- Slowly pull the ribbon wires out from the outside.

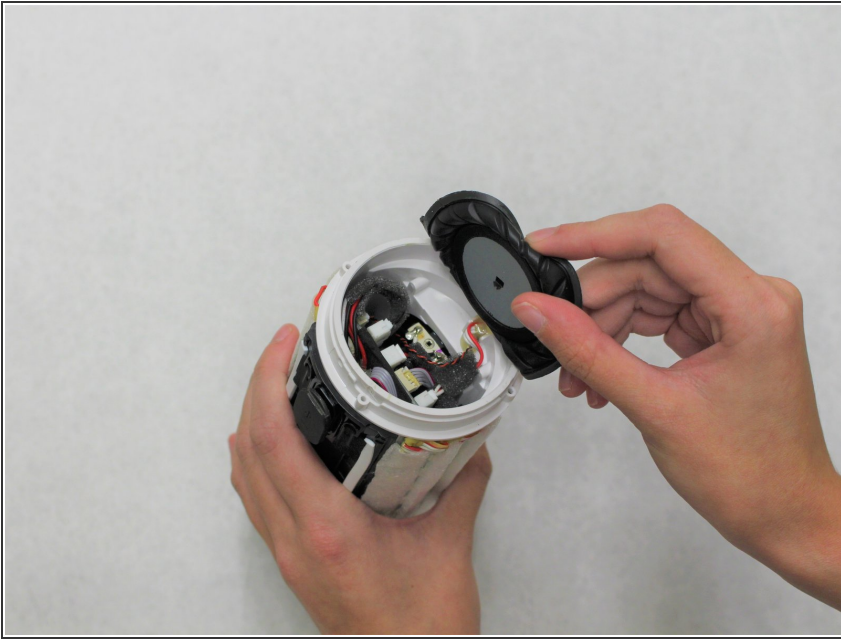
⚠ If there is too much resistance, remove more of the black glue.

## Step 9



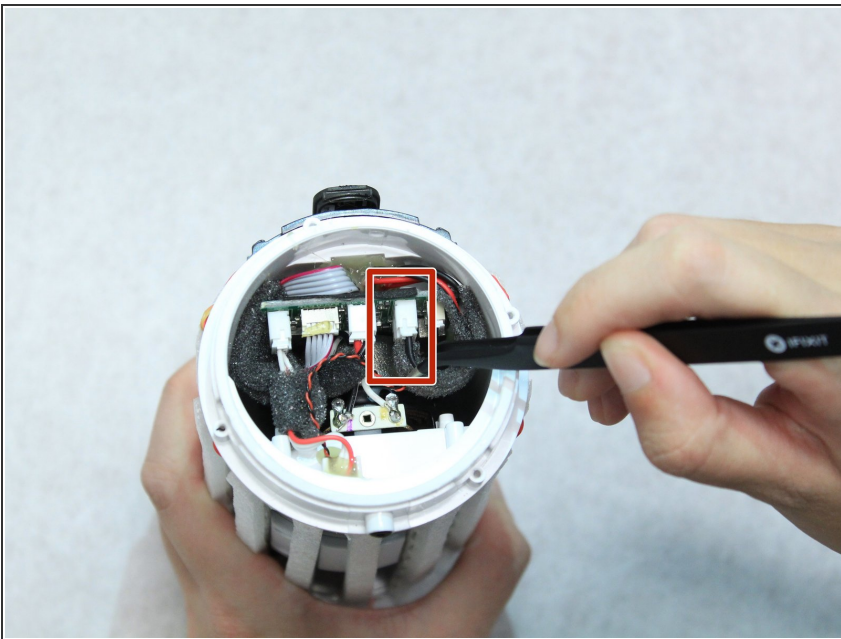
- Remove the four 7.9mm Phillips #1 screws around the edges of the center piece.
- Slide the outer casing off away from the auxiliary and micro USB port.

## Step 10



- Remove the other end of the device to access the wiring underneath it.

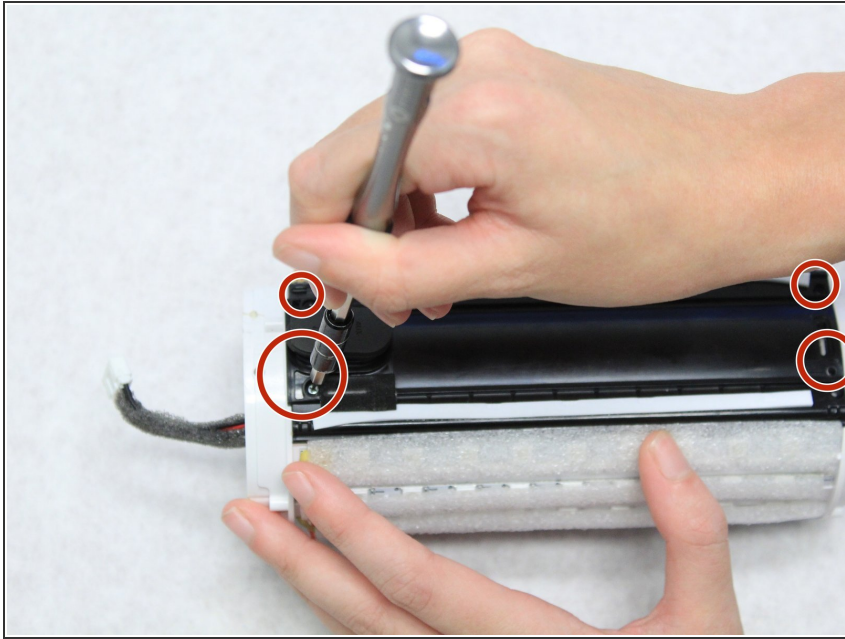
## Step 11



- Use the angled tweezers to disconnect the battery from the motherboard. It will take some work to remove this piece.

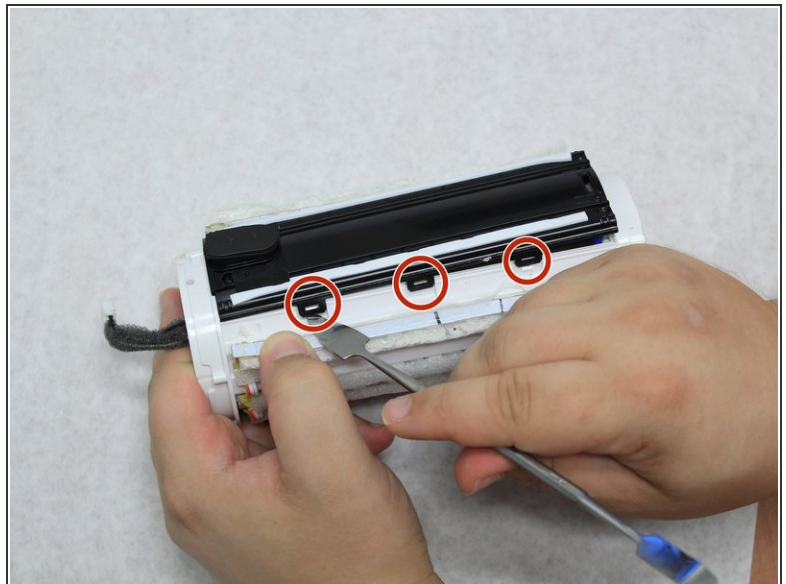
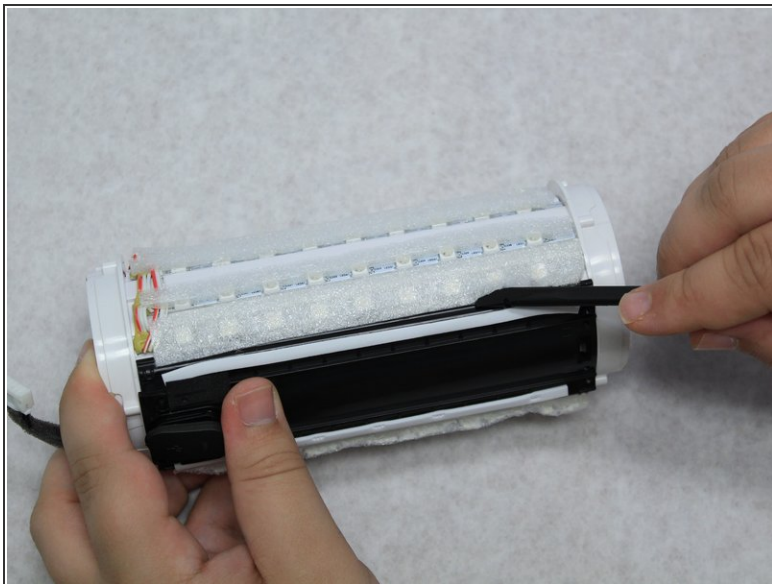


## Step 12



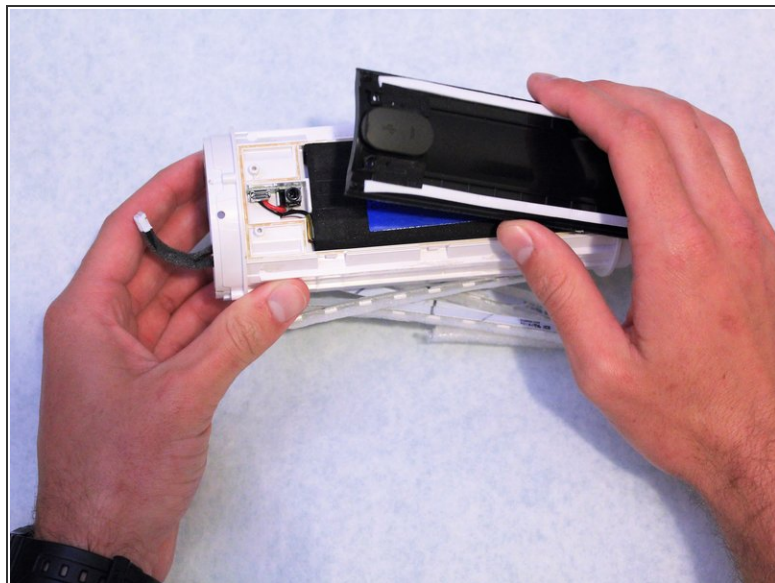
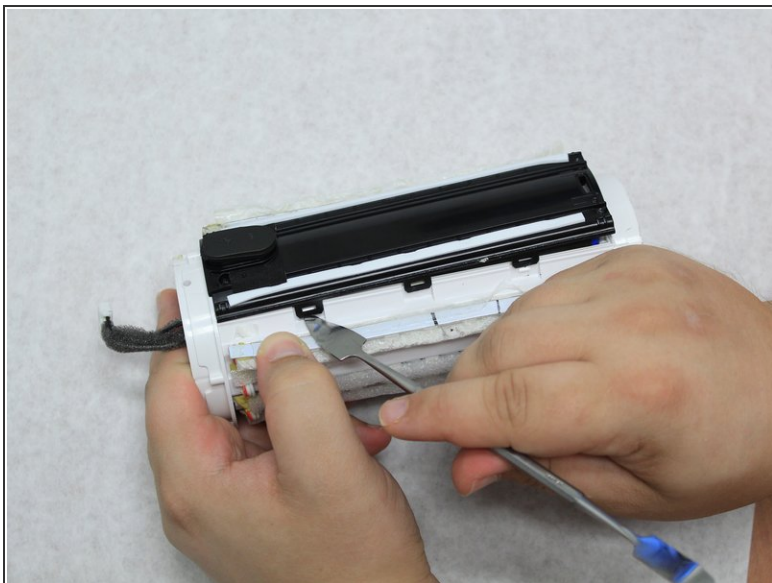
- Remove the four 7.9mm Phillips #1 screws from the black centerpiece of the device.

## Step 13



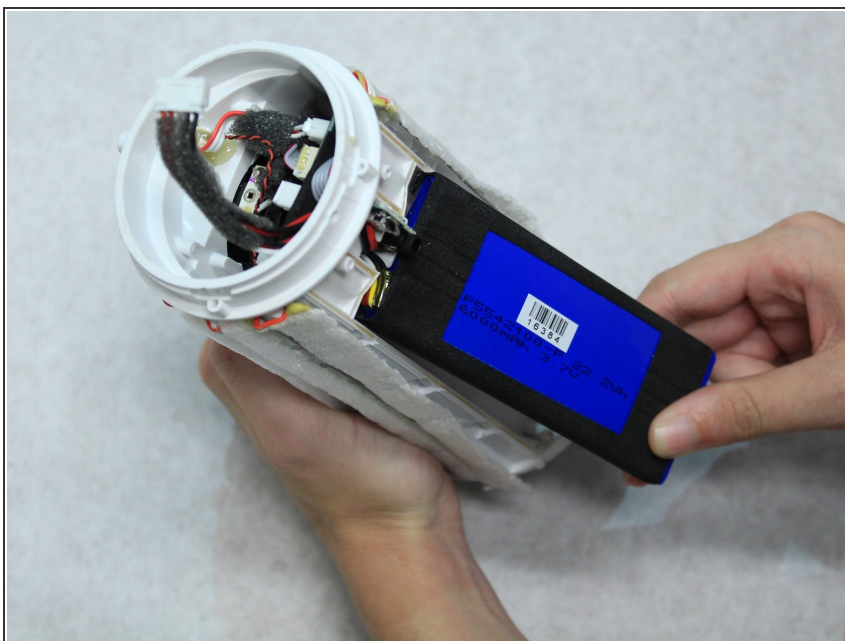
- Use the spudger to reach under the sides of the black centerpiece to access the six latches, three of which are on each side.

## Step 14



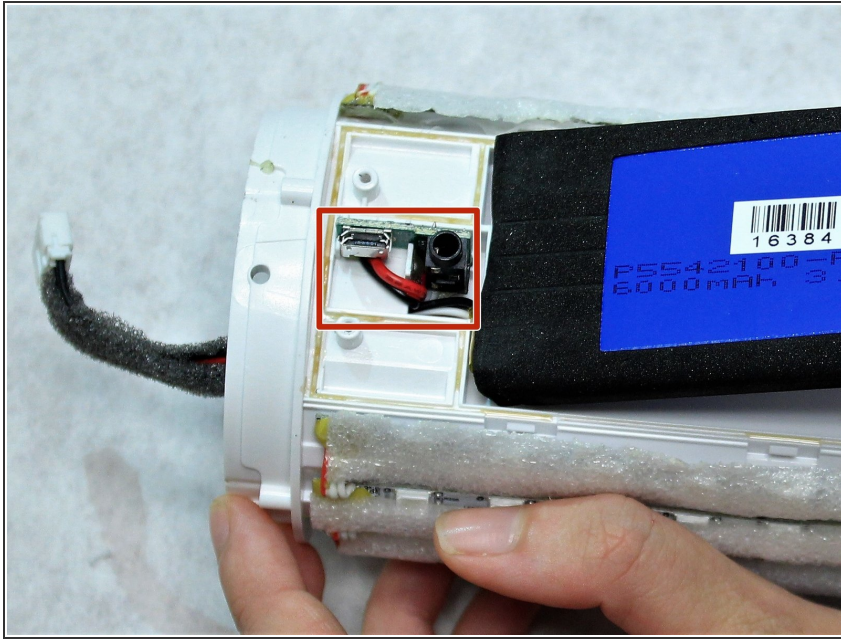
- Lift the black centerpiece off with the metal spudger to reveal the battery underneath.

## Step 15



- Use a hot air gun to soften the hot glue in order to fully remove the battery.

## Step 16 — Auxiliary and Micro USB Port



- Remove the solder on the micro USB and Auxiliary port wires to disconnect them.

To reassemble your device, follow these instructions in reverse order.