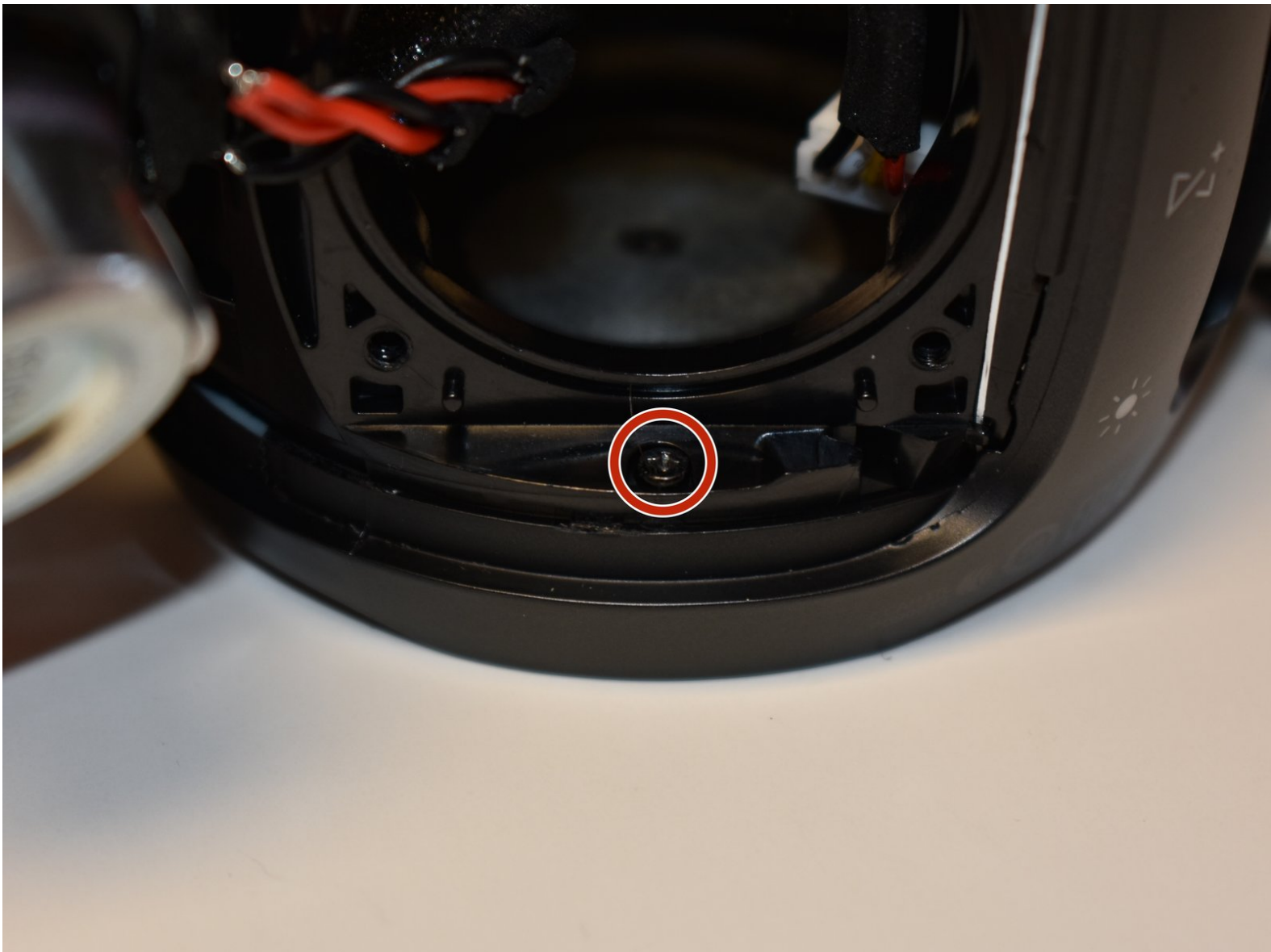




JBL Pulse 3 Charging Port Replacement

This guide will accomplish replacing the charging port on the JBL Pulse 3.

Written By: Kaitlyn Greenfield



INTRODUCTION

The charging port on the JBL Pulse 3 is located on the side of the base by the speakers. It is located among the push buttons on the side of the JBL Pulse 3.



TOOLS:

- [iFixit Opening Tools](#) (1)
- [Phillips #0 Screwdriver](#) (1)
- [Phillips #1 Screwdriver](#) (1)
- [Phillips #2 Screwdriver](#) (1)
- [Tweezers](#) (1)
- [Flush Wire Cutters](#) (1)



PARTS:

- [JBL Pulse 3 Charging Port](#) (1)

Step 1 — Speaker Grill



- Lay the JBL Pulse 3 on its side as shown in the picture.
- Use a plastic opening tool to lift the top right corner of the speaker grill. A small amount of force is necessary to remove the grill.

Step 2



- Repeat step 1 for bottom right corner of speaker grill.

Step 3



- After pulling the right side of the grill off, place thumb underneath grill as shown in the picture.
- Lift and pull straight out to pull grill off the posts.

Step 4



- Repeat steps 1-3 for the left side of the speaker grill on the JBL Pulse 3. The speaker grill should now be completely removed from the JBL Pulse 3.

Step 5 — Outside Casing



- Use a Phillips #00 screwdriver to remove the six black 6mm screws on the inside of the top of the bottom section.

Step 6



- Turn the JBL Pulse 3 right-side up and unscrew the top ring of the device. A small amount of force and/or a cotton cloth may be necessary to remove this piece.

Step 7



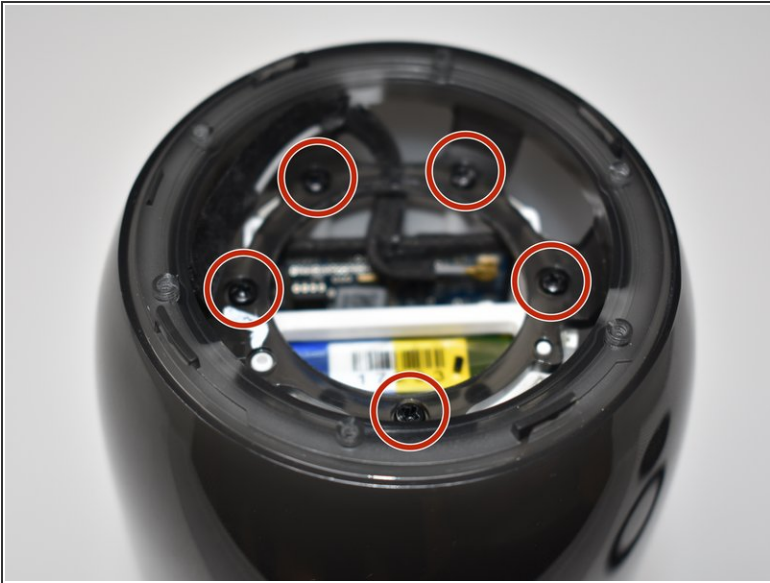
- Remove the six 5mm screws on top of the JBL Pulse 3 with a Phillips #0 screwdriver.

Step 8



- Pull off the top disc of the JBL Pulse 3.

Step 9



- Remove the five 7mm screws on the inside of the JBL Pulse 3 with a Phillips #1 screwdriver.

Step 10



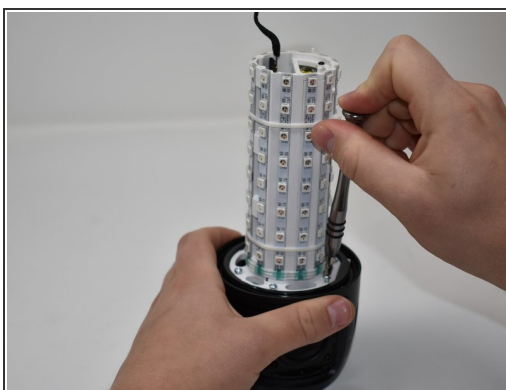
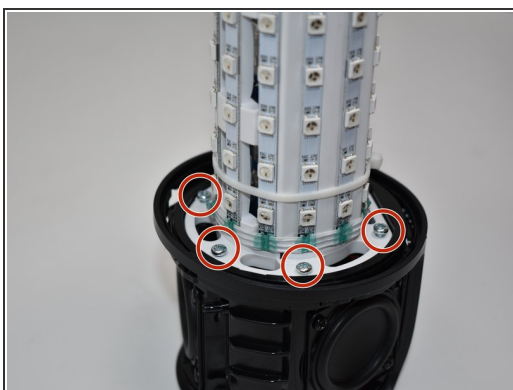
- Peel off black, taped-on electrical lead from the inside side of the JBL Pulse 3.

Step 11



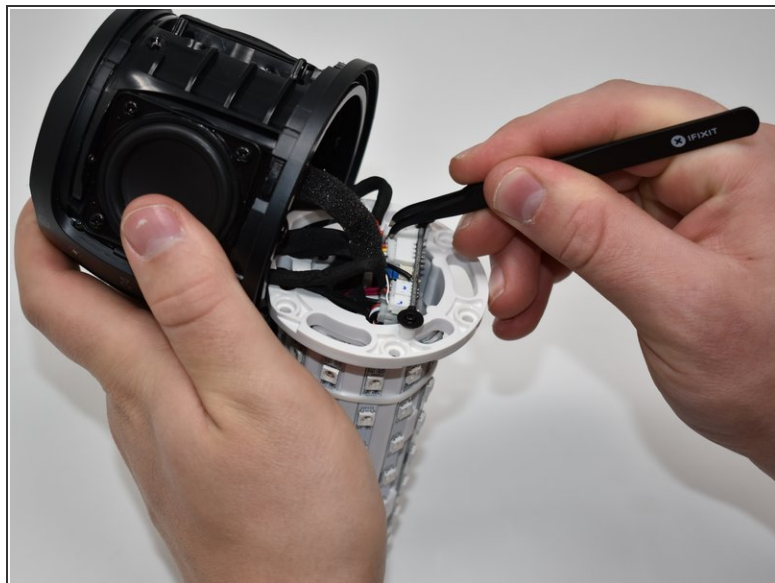
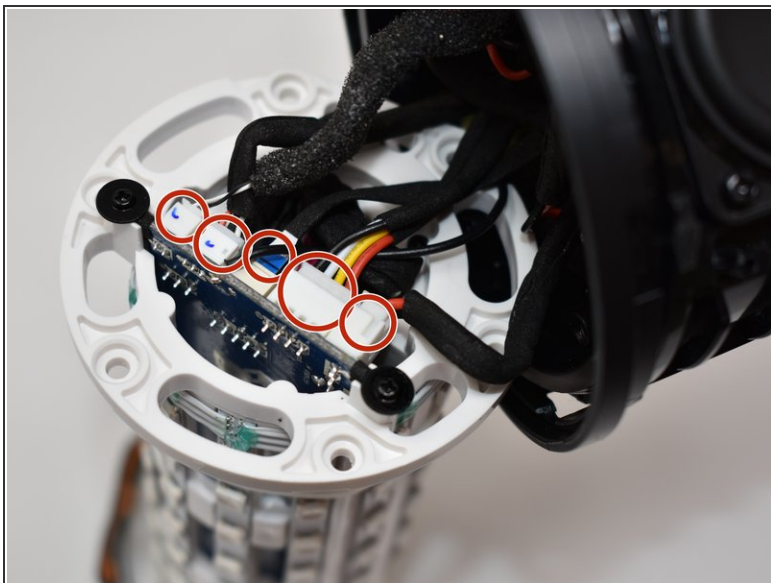
- Pull the top section of the JBL Pulse 3 up. The outside casing to the JBL Pulse 3 should now be removed.

Step 12 — LED Light Display



- Use a Phillips #2 screwdriver to remove the six 11 mm screws that circle the bottom of the LED light display.
- Pull the LED light display off of the JBL Pulse 3 base.

Step 13



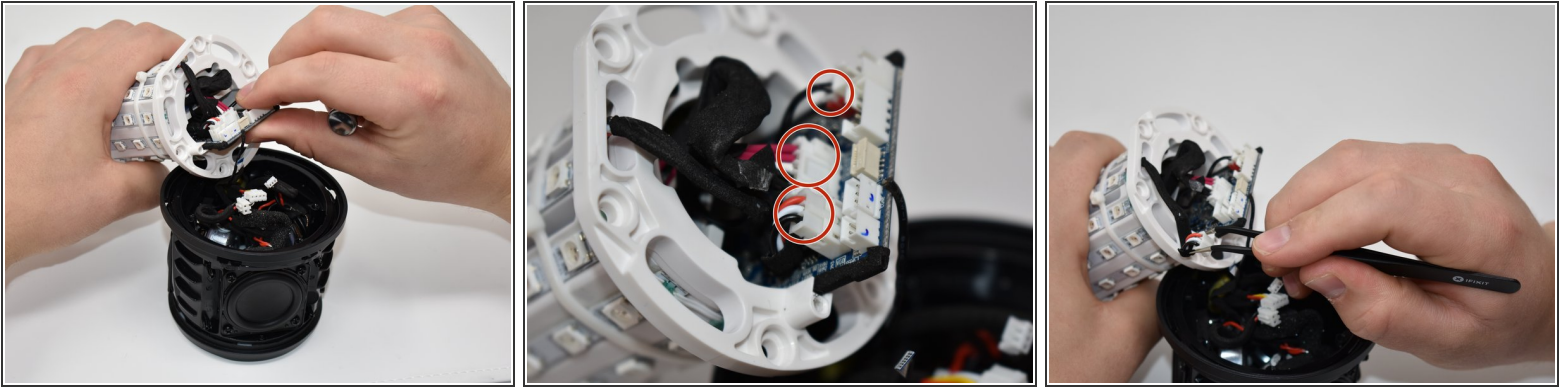
- Use tweezers to pull the five connections off of the LED light display.

Step 14 — Motherboard



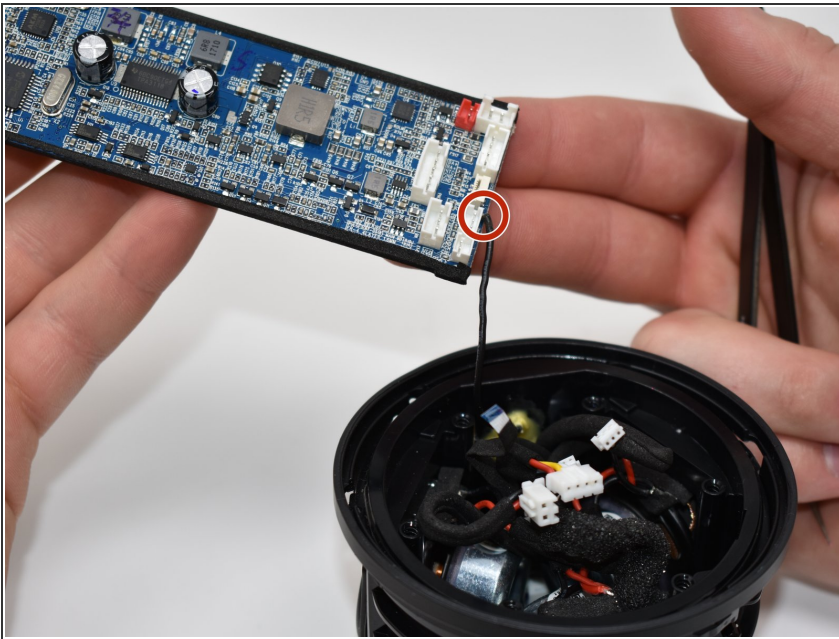
- Using a Phillips #0 screwdriver, remove the two black 8mm screws on the bottom of the LED light display.

Step 15



- Pull out the motherboard slightly from the LED light display as shown. Using tweezers, unplug the three connections attached to the motherboard.

Step 16



- Pull the rest of the motherboard out from the LED light display.
- Using wire cutters, snip the black wire connecting to the base of the JBL Pulse 3 at the base of the motherboard. The motherboard should now be removed from the JBL Pulse 3.

Step 17 — Speaker



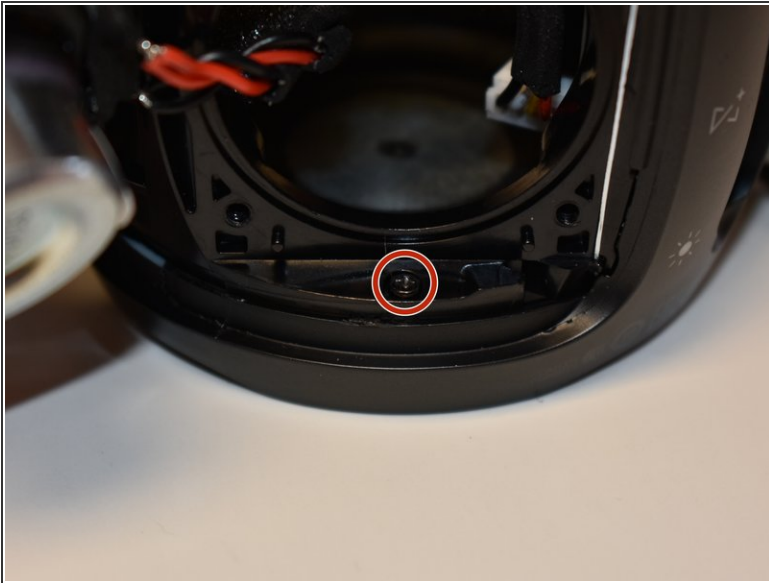
- Using a Phillips #2 screwdriver, remove the four 10mm screws on the corner of the speaker on the side of the base of the JBL Pulse 3.

Step 18



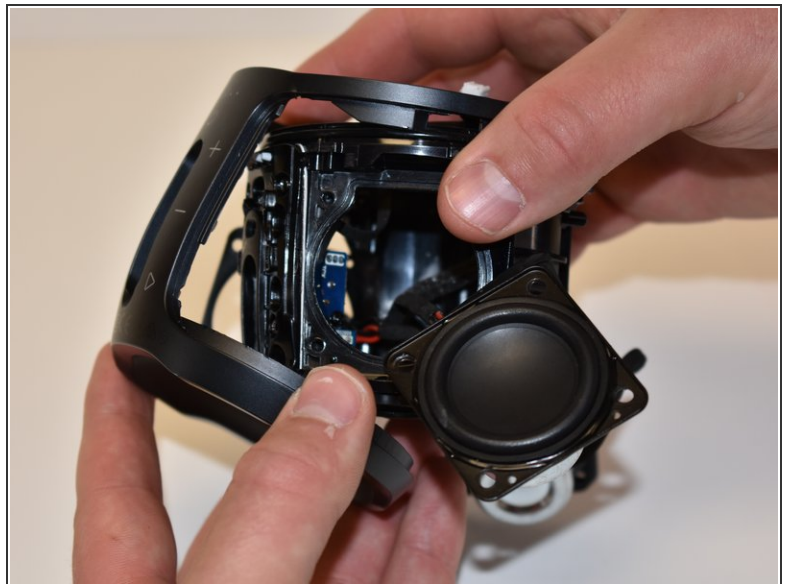
- Pull out the speaker and cut the black and red wire with wire cutters. The speaker should now be removed from the JBL Pulse 3.

Step 19 — Charging Port



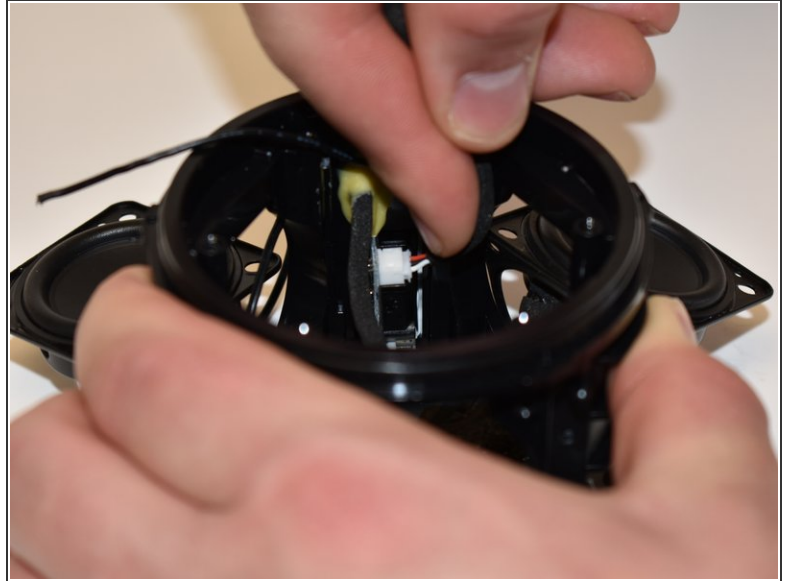
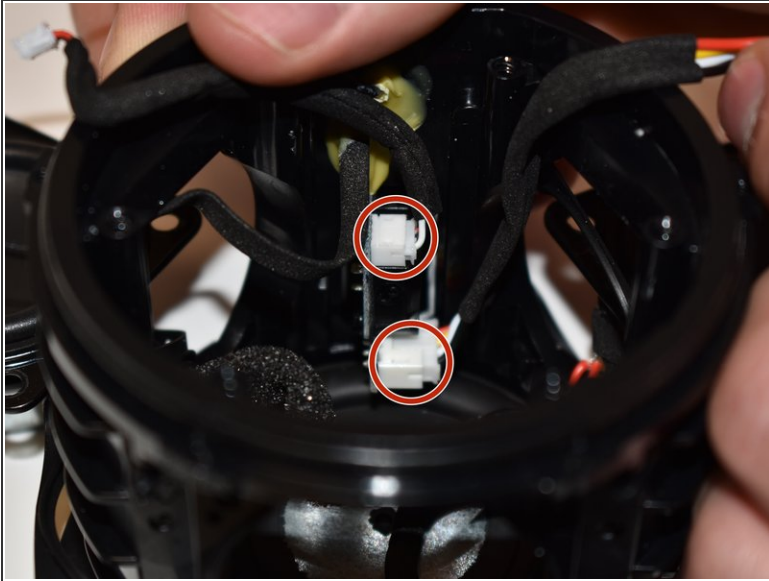
- Repeat the steps to take out all three speakers on the base of the JBL Pulse 3.
- Using a Phillips #0 screwdriver, remove the 6 mm screw under each of the three speakers around the base of the JBL Pulse 3.

Step 20



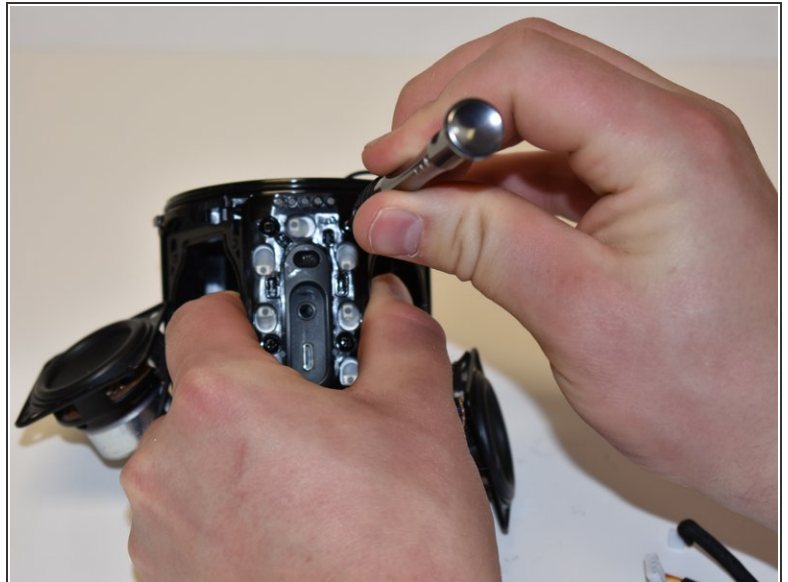
- Grab the outside of the JBL Pulse 3 at the bottom and pull outward until the outside button cover comes off.

Step 21



- Disconnect the two connections from the inside side of the base of the JBL Pulse 3 by pushing on the wire with your index finger in the opposite direction of the connection.

Step 22



- Using a Phillips #1 screwdriver, remove the four 10mm screws by the push buttons on the side of the base of the JBL Pulse 3.

Step 23



- Pull off the inside button cover with the attached charging port. The charging port should now be removed.

To reassemble your device, follow these instructions in reverse order.