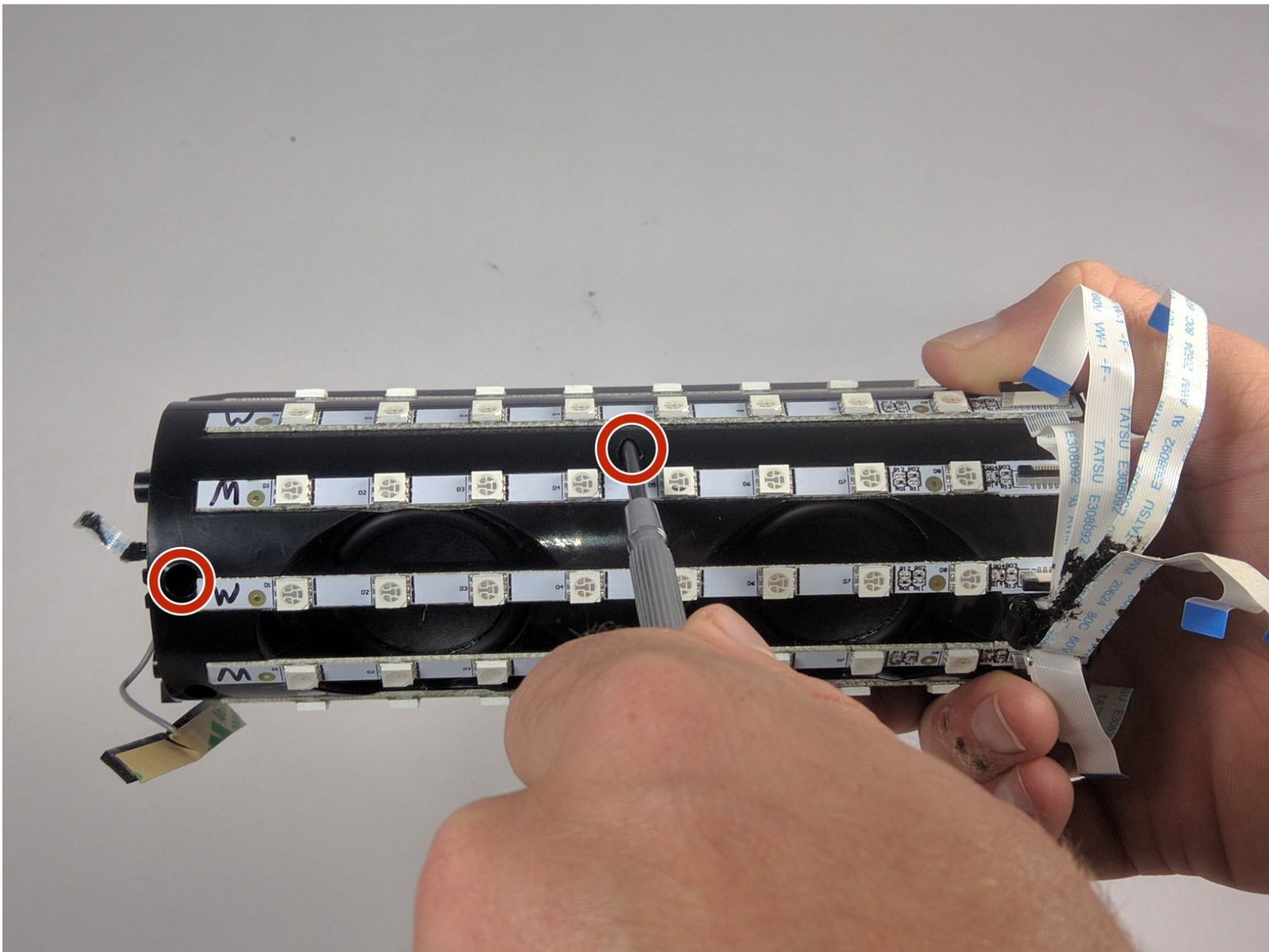




# JBL Pulse Disassembly

A guide on how to reach the internal components of the speaker, such as speakers, battery, motherboard, and ports.

Written By: Maxwell Busenbarrick





## TOOLS:

- [iFixit Opening Tools](#) (1)
  - [Metal Spudger](#) (1)
  - [Phillips #0 Screwdriver](#) (1)
-

## Step 1 — Button Board



- Use a plastic opening tool to pry around the edges of the circular rubber panel.

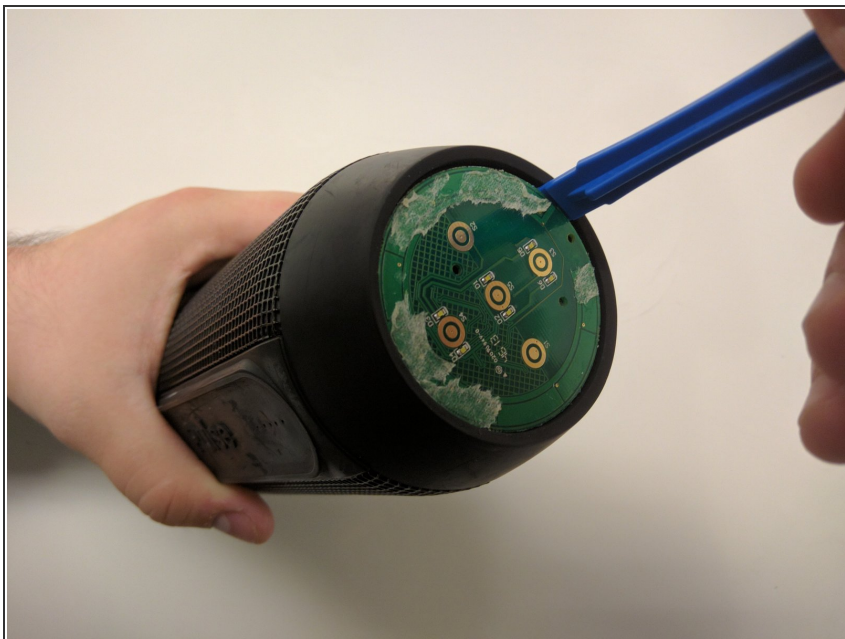
## Step 2



- Once the edges are loose, pull off the rubber button panel completely.
- ☒ New adhesive will have to be applied when reassembling.



### Step 3



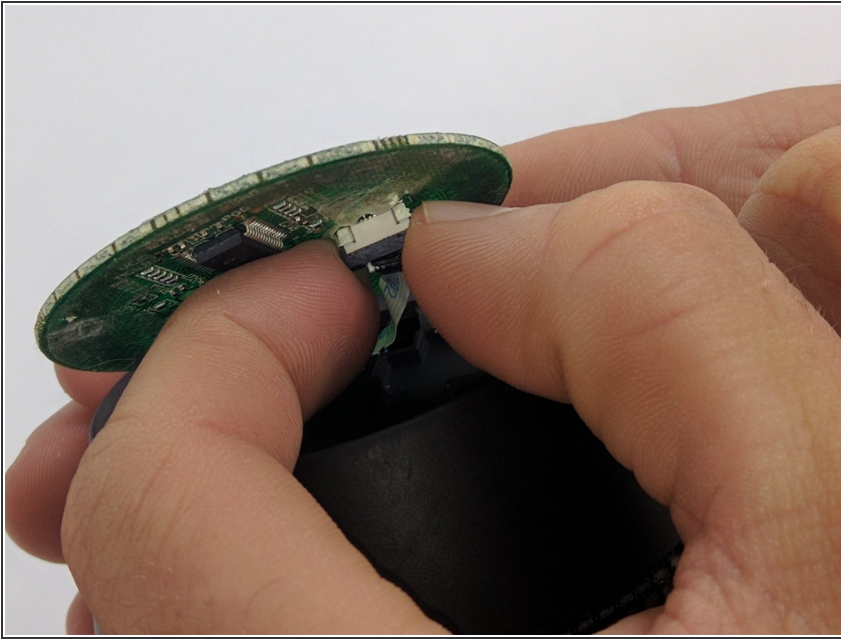
- Use your plastic opening tool to pry the button board loose by lifting the edges.

### Step 4



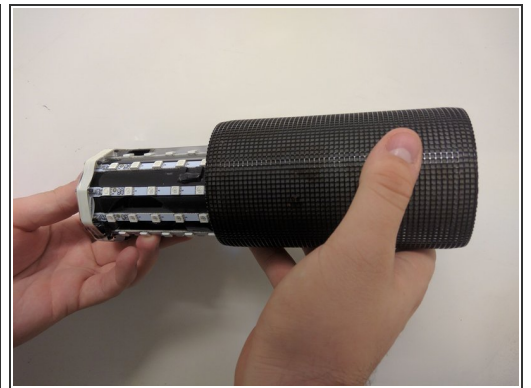
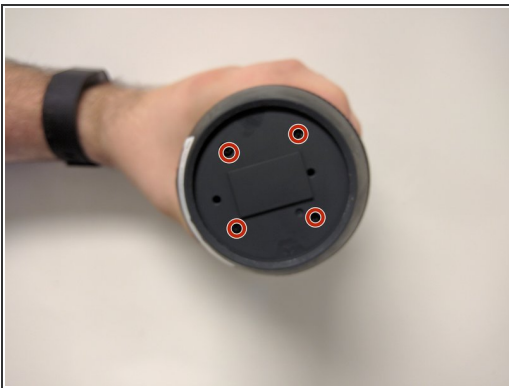
- Lift the button board, exposing the attached cable.
- ☑ New adhesive will have to be applied when reassembling.

## Step 5



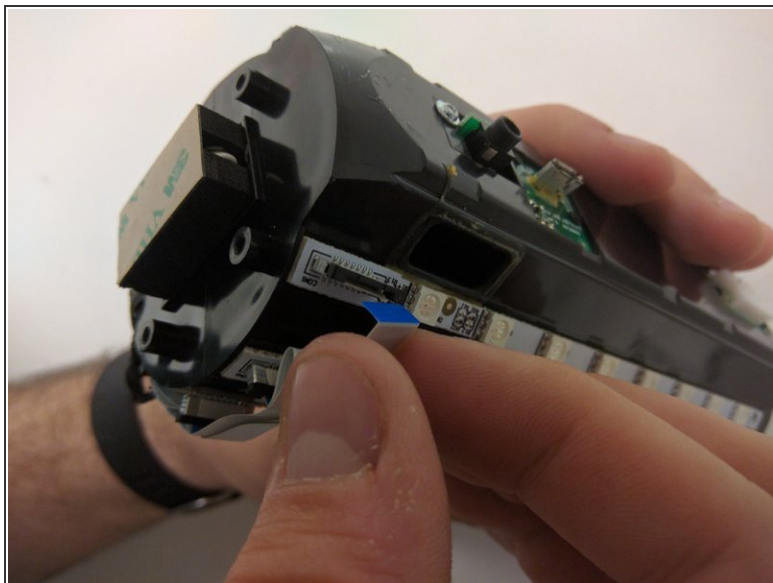
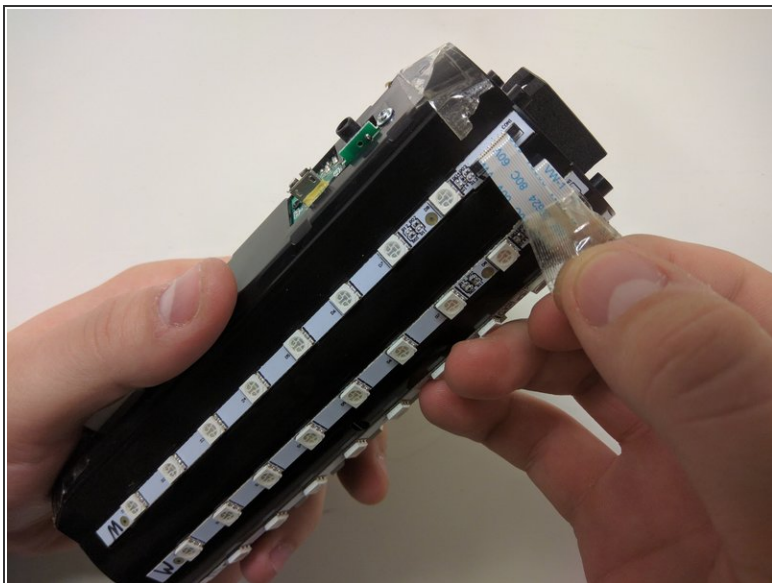
- Pull black piece on top of socket away from board to loosen, then detach the cable.

## Step 6 — Outer Casing



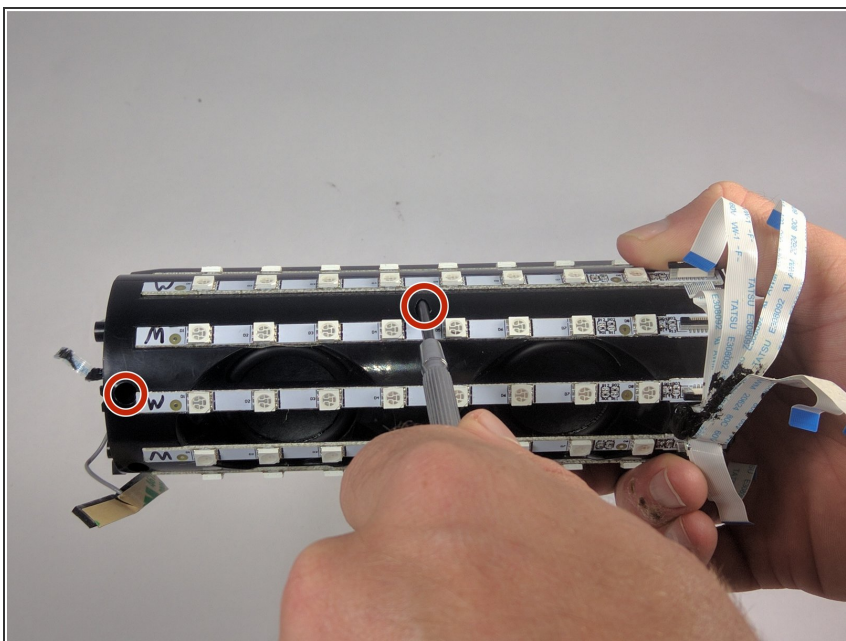
- Take out the four 9mm black PH0 screws from the top and bottom of the device.
- Pull off cap by hand.
- The outer casing can now be removed.

## Step 7 — JBL Pulse LED Lights Disassembly



- Remove the tape around the cables on the top of the device.
- Remove the cables by lifting up on the black bracket and then pulling the cable out.

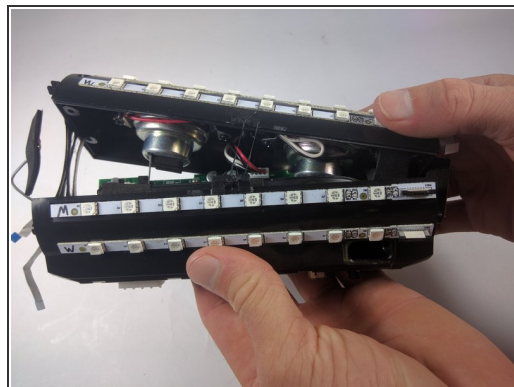
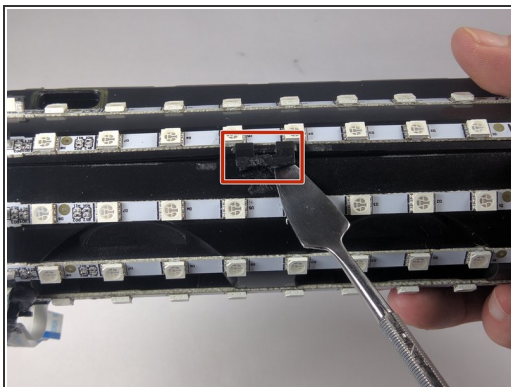
## Step 8 — JBL Pulse Disassembly



- Remove two black 9mm PH0 screws from outside of inner casing on each side.

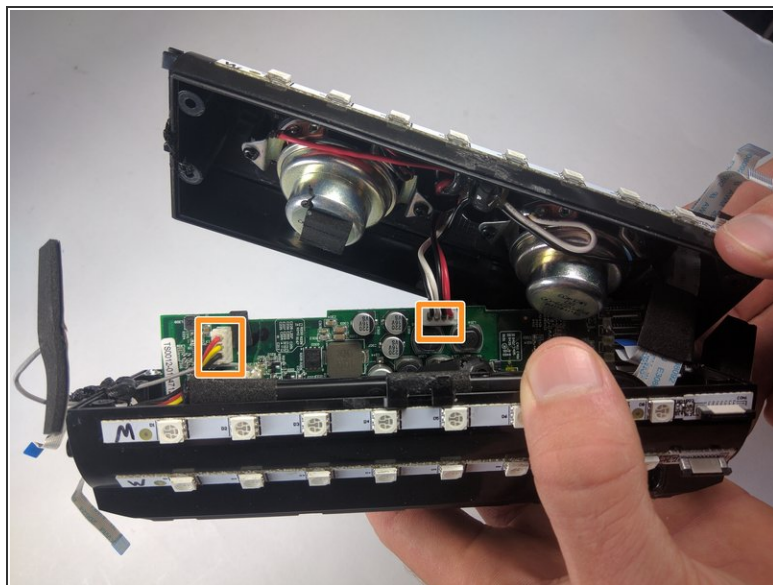
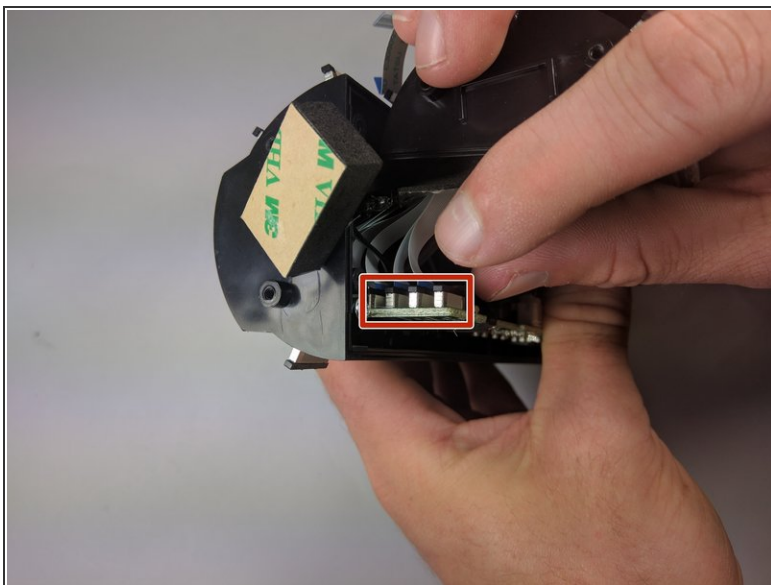


## Step 9



- Use your metal spudger to unhook the bracket holding the case together.
- Pull apart the casing with your hands.

## Step 10



- Remove the cables by lifting up on the black bracket and then pulling the cable out.
- Remove cables by pulling firmly.

To reassemble your device, follow these instructions in reverse order.