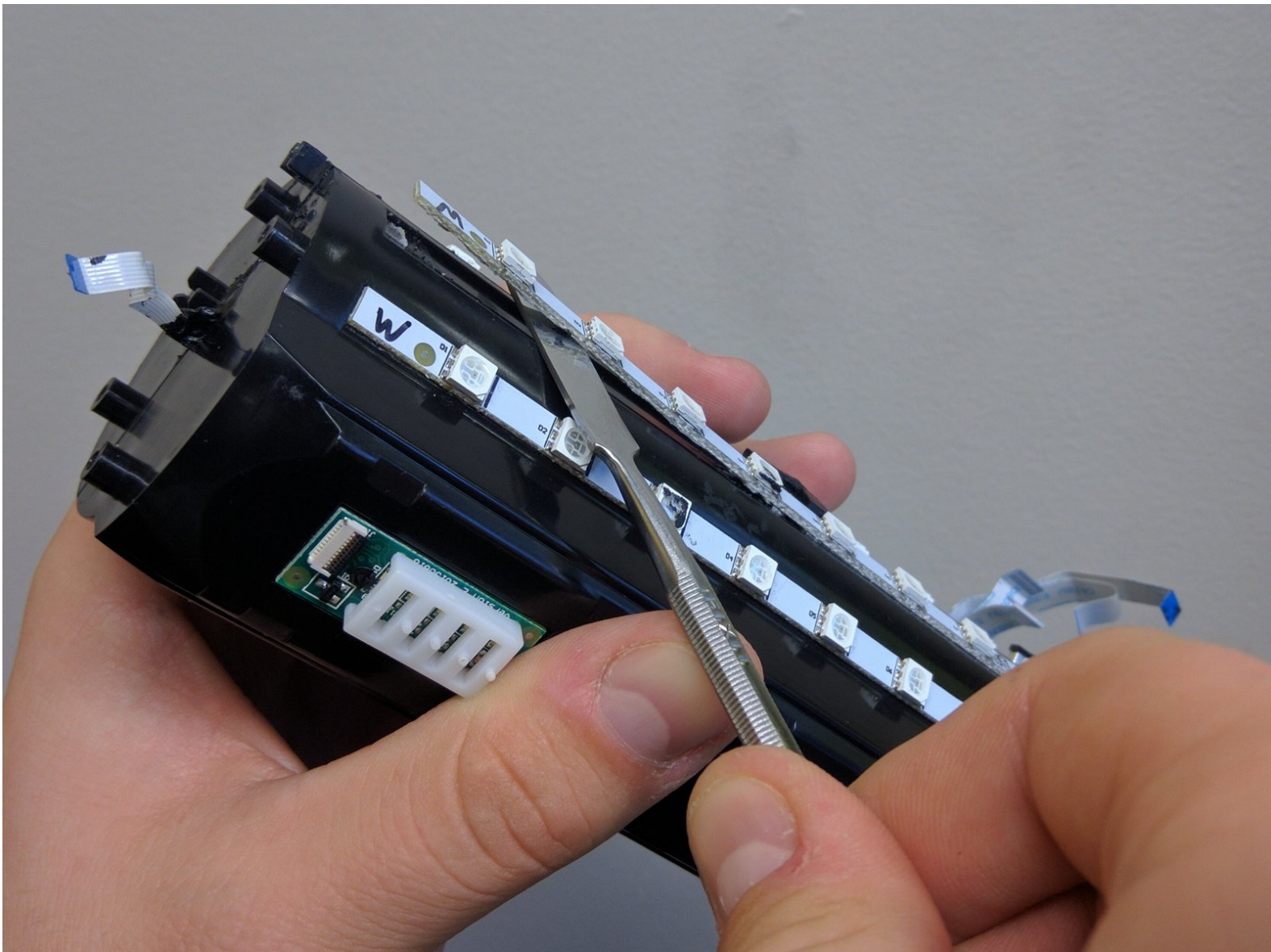




JBL Pulse LED Light Replacement

A guide on replacing the LED light feature that occurs while playing music on your device.

Written By: Maxwell Busenbarrick



INTRODUCTION

When the lights are displaying improperly, usually replacing the LED lights will fix the problem.



TOOLS:

- [iFixit Opening Tools](#) (1)
- [Phillips #0 Screwdriver](#) (1)
- [Metal Spudger](#) (1)



PARTS:

- [Screws](#) (4)
Phillips Head
9 mm

Step 1 — Button Board



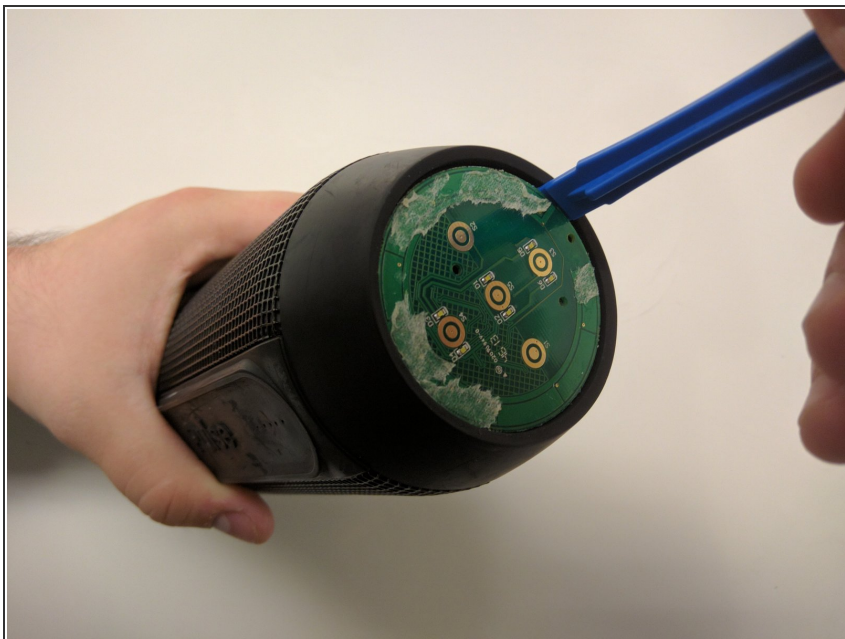
- Use a plastic opening tool to pry around the edges of the circular rubber panel.

Step 2



- Once the edges are loose, pull off the rubber button panel completely.
- ☑ New adhesive will have to be applied when reassembling.

Step 3



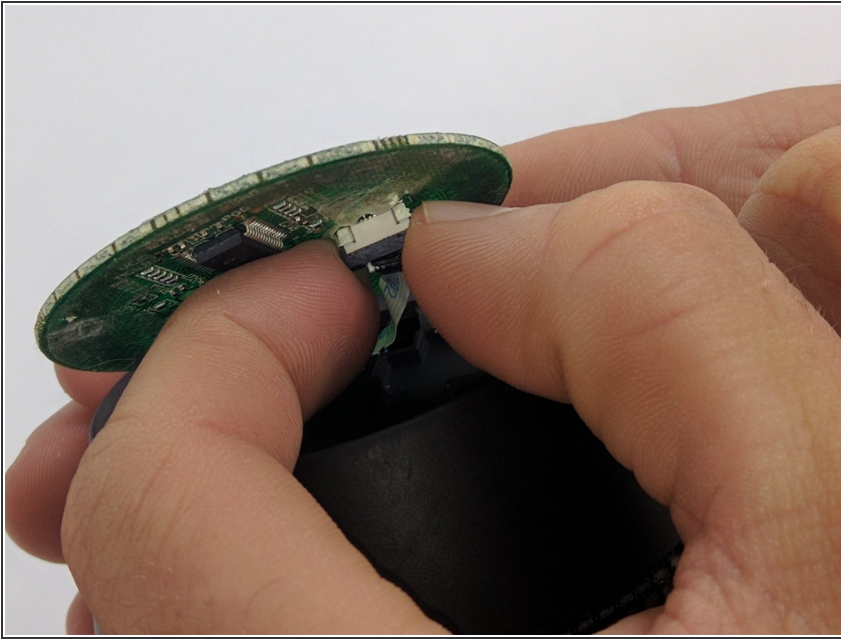
- Use your plastic opening tool to pry the button board loose by lifting the edges.

Step 4



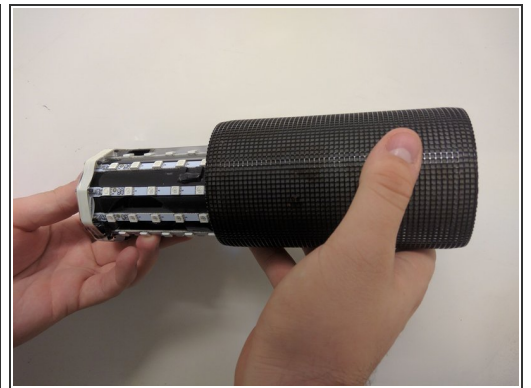
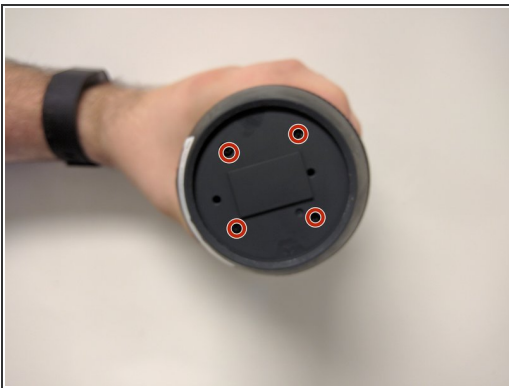
- Lift the button board, exposing the attached cable.
- ☑ New adhesive will have to be applied when reassembling.

Step 5



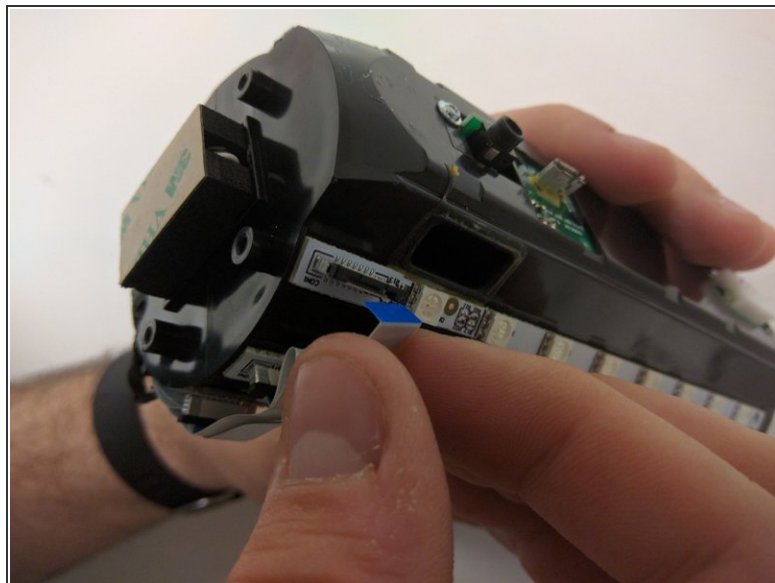
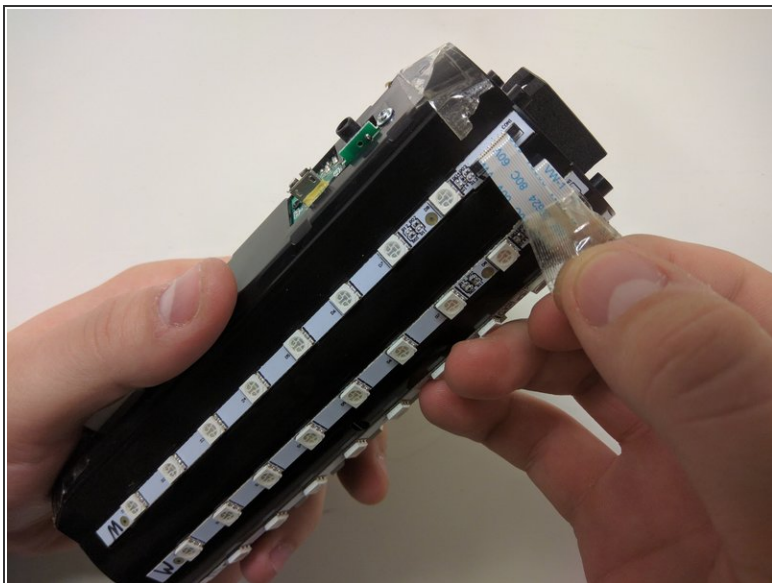
- Pull black piece on top of socket away from board to loosen, then detach the cable.

Step 6 — Outer Casing



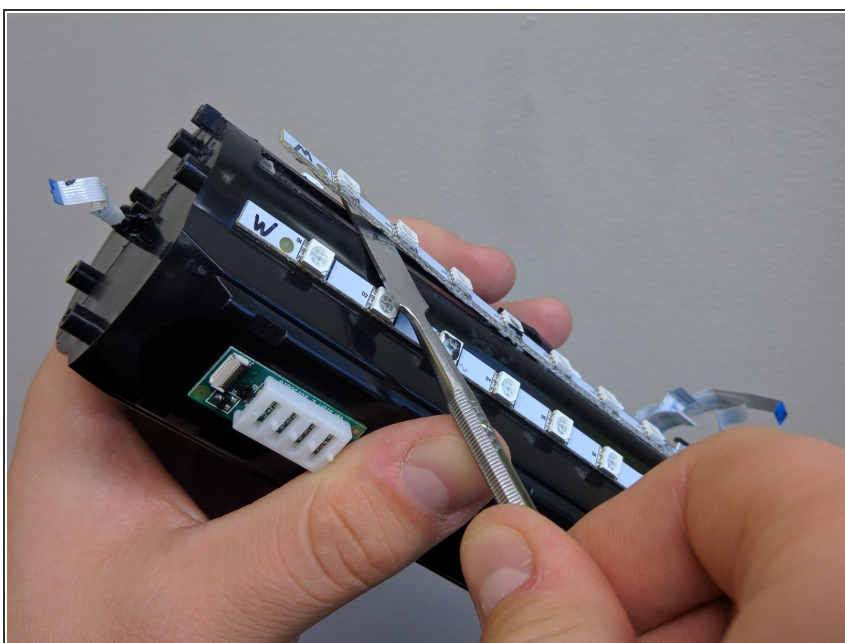
- Take out the four 9mm black PH0 screws from the top and bottom of the device.
- Pull off cap by hand.
- The outer casing can now be removed.

Step 7 — JBL Pulse LED Lights Disassembly



- Remove the tape around the cables on the top of the device.
- Remove the cables by lifting up on the black bracket and then pulling the cable out.

Step 8 — LED Light



- Pry off LED light panel using a metal spudger.

To reassemble your device, follow these instructions in reverse order.