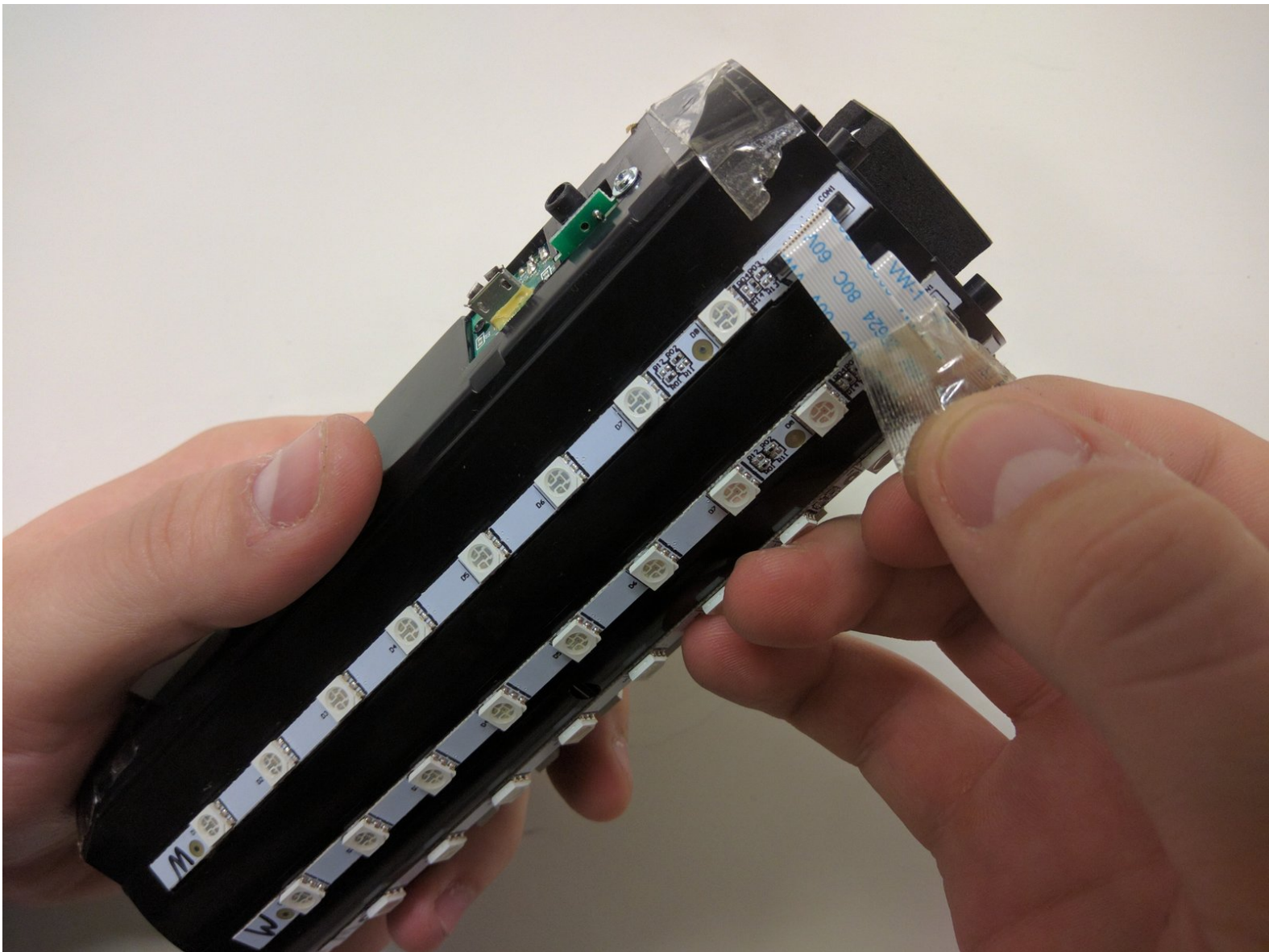




JBL Pulse LED Lights Disassembly

A guide on how to get to the light up feature that occurs while you play music.

Written By: Maxwell Busenbarrick





TOOLS:

- [iFixit Opening Tools](#) (1)
 - [Phillips #0 Screwdriver](#) (1)
-

Step 1 — Button Board



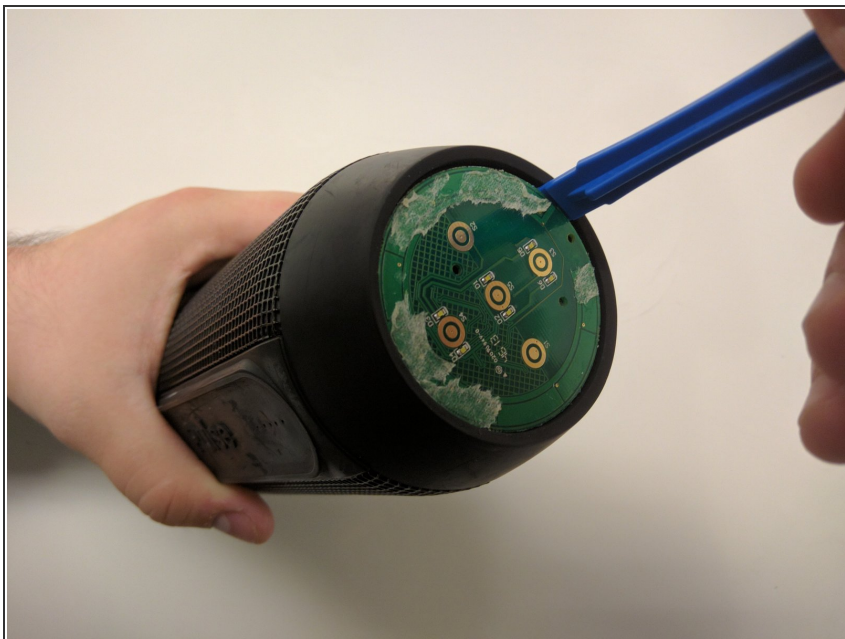
- Use a plastic opening tool to pry around the edges of the circular rubber panel.

Step 2



- Once the edges are loose, pull off the rubber button panel completely.
- ☑ New adhesive will have to be applied when reassembling.

Step 3



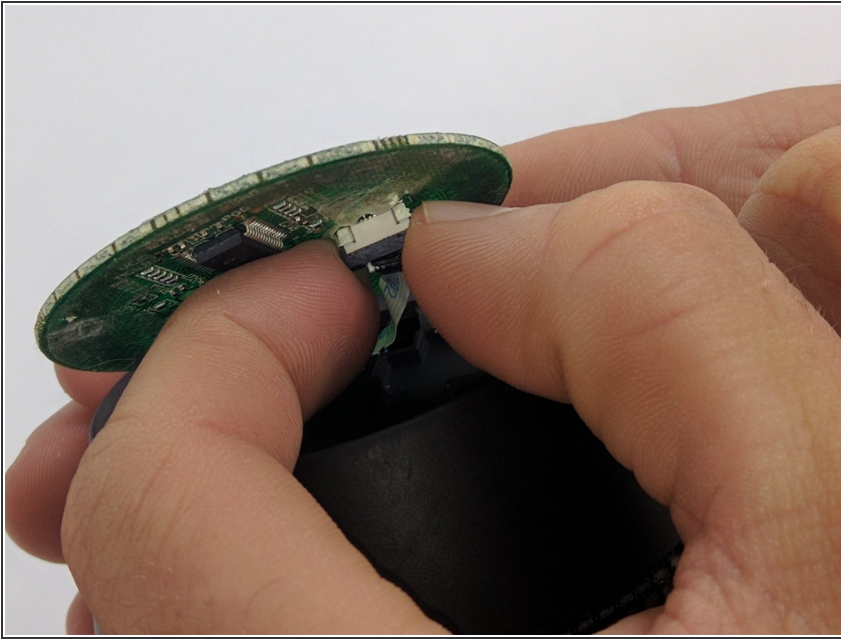
- Use your plastic opening tool to pry the button board loose by lifting the edges.

Step 4



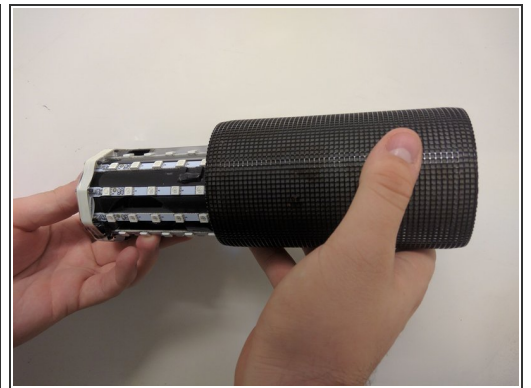
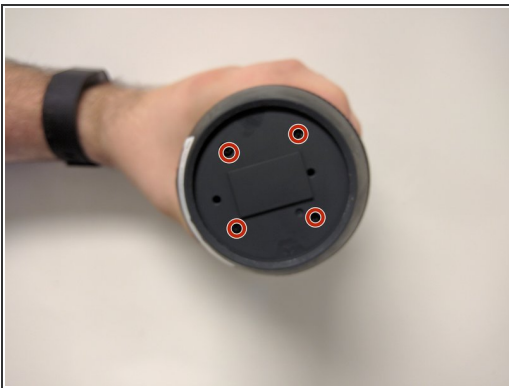
- Lift the button board, exposing the attached cable.
- ☑ New adhesive will have to be applied when reassembling.

Step 5



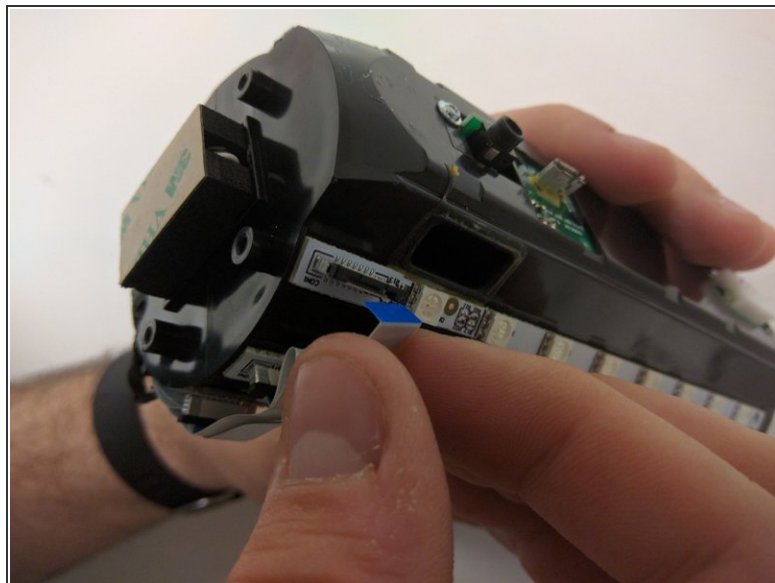
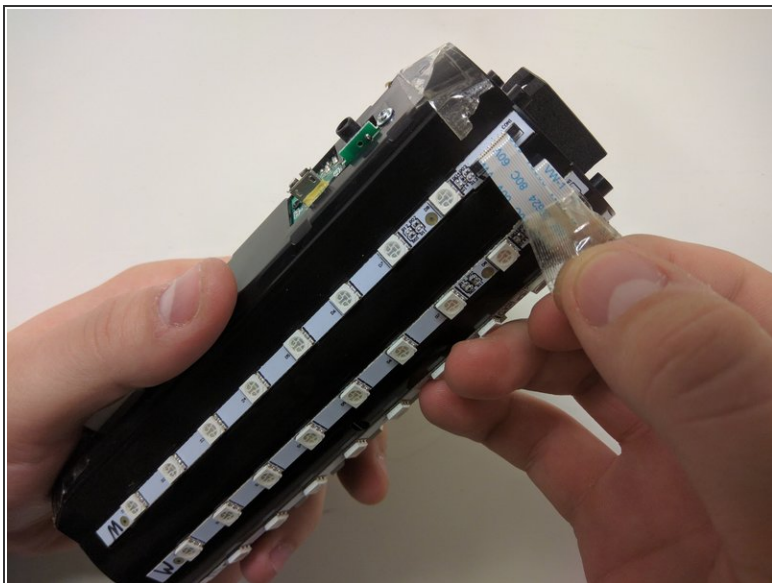
- Pull black piece on top of socket away from board to loosen, then detach the cable.

Step 6 — Outer Casing



- Take out the four 9mm black PH0 screws from the top and bottom of the device.
- Pull off cap by hand.
- The outer casing can now be removed.

Step 7 — JBL Pulse LED Lights Disassembly



- Remove the tape around the cables on the top of the device.
- Remove the cables by lifting up on the black bracket and then pulling the cable out.

To reassemble your device, follow these instructions in reverse order.