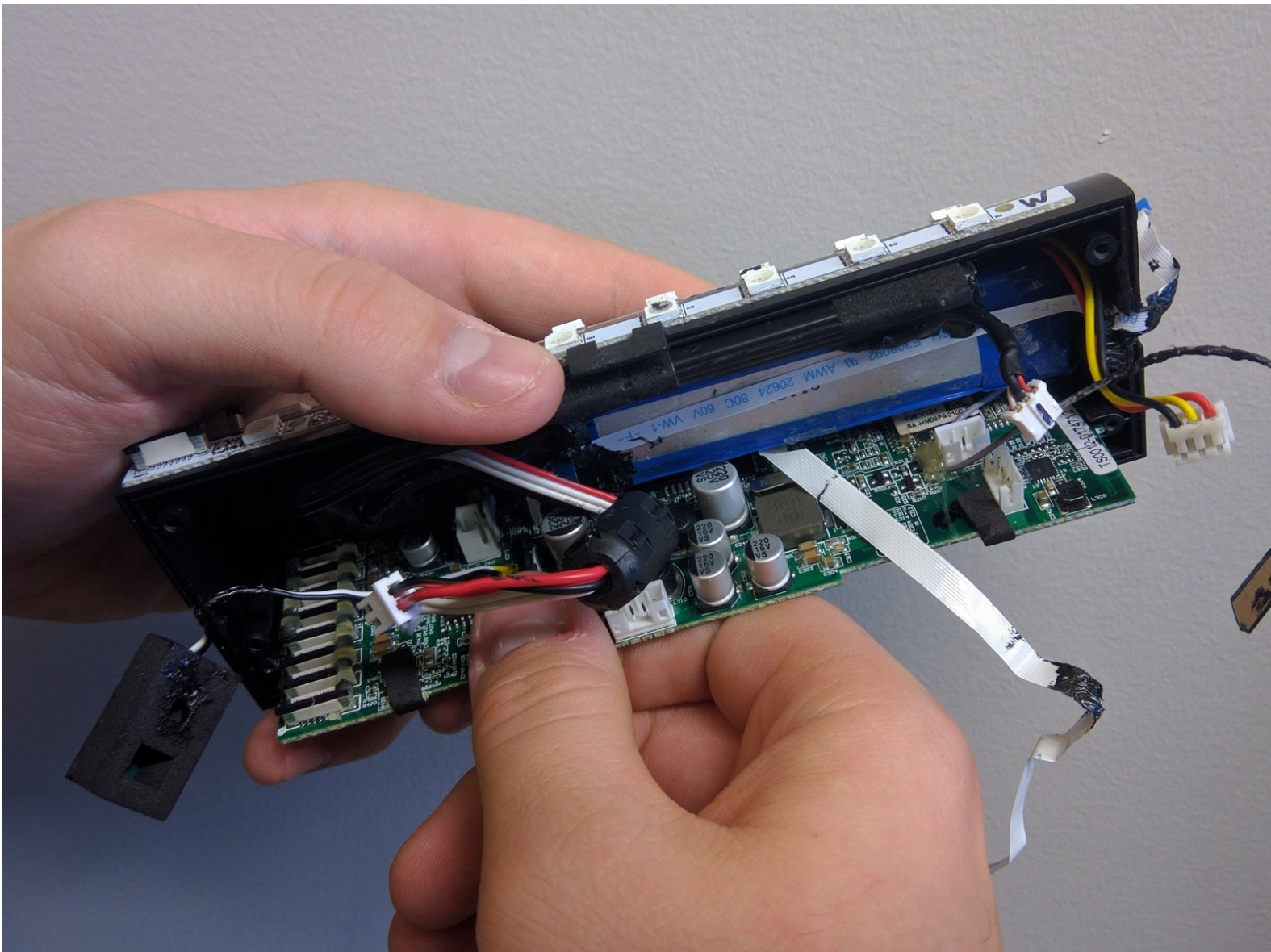




JBL Pulse Motherboard Replacement

How to replace the motherboard for the JBL Pulse.

Written By: Maxwell Busenbarrick



INTRODUCTION

An in depth guide on how to replace the motherboard in case of general unresponsiveness or faulty functionality.

TOOLS:

- [iFixit Opening Tools](#) (1)
 - [Phillips #0 Screwdriver](#) (1)
 - [Metal Spudger](#) (1)
-

Step 1 — Button Board



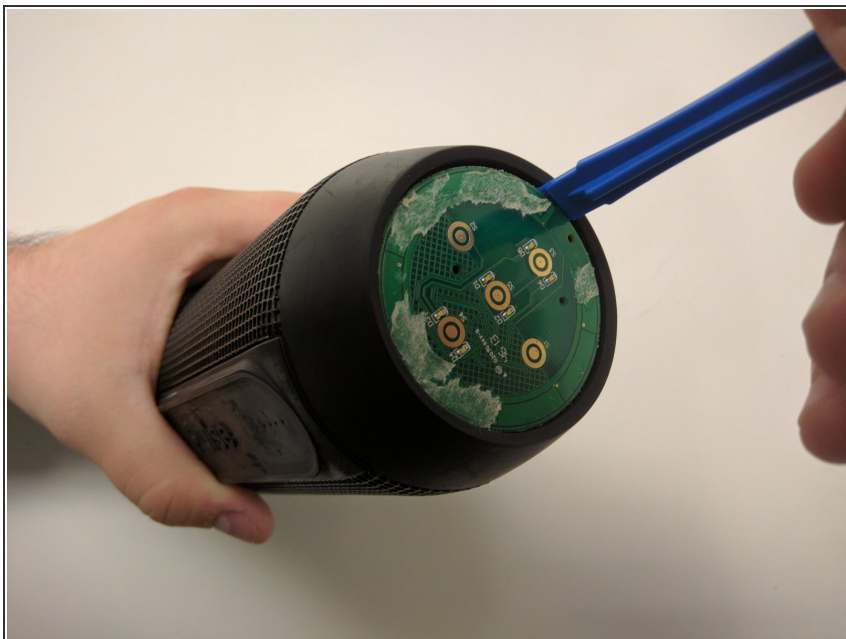
- Use a plastic opening tool to pry around the edges of the circular rubber panel.

Step 2



- Once the edges are loose, pull off the rubber button panel completely.
- ☑ New adhesive will have to be applied when reassembling.

Step 3



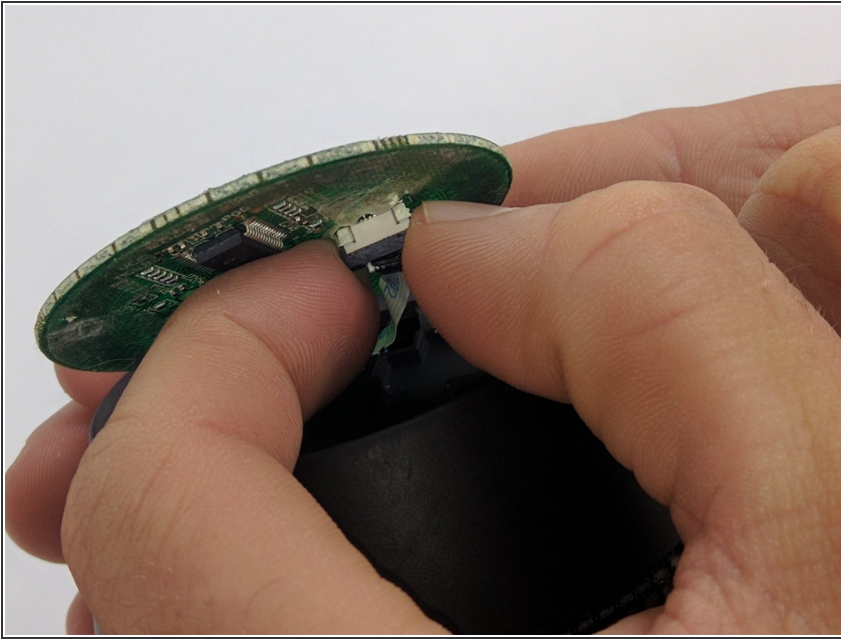
- Use your plastic opening tool to pry the button board loose by lifting the edges.

Step 4



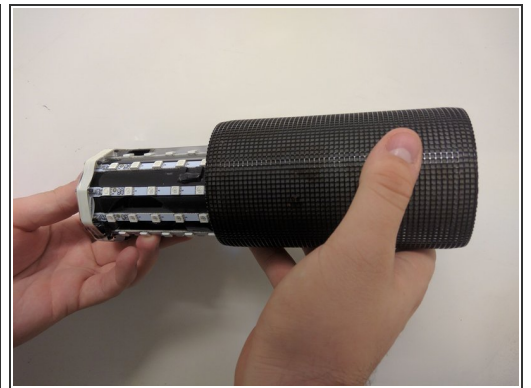
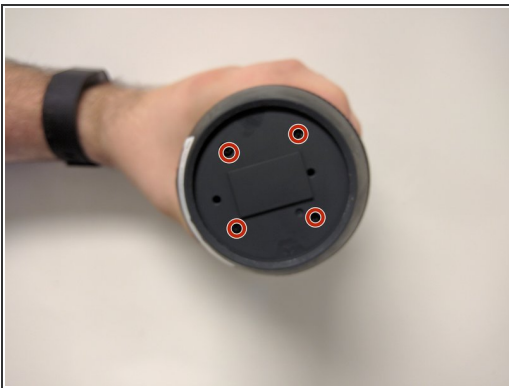
- Lift the button board, exposing the attached cable.
- ☑ New adhesive will have to be applied when reassembling.

Step 5



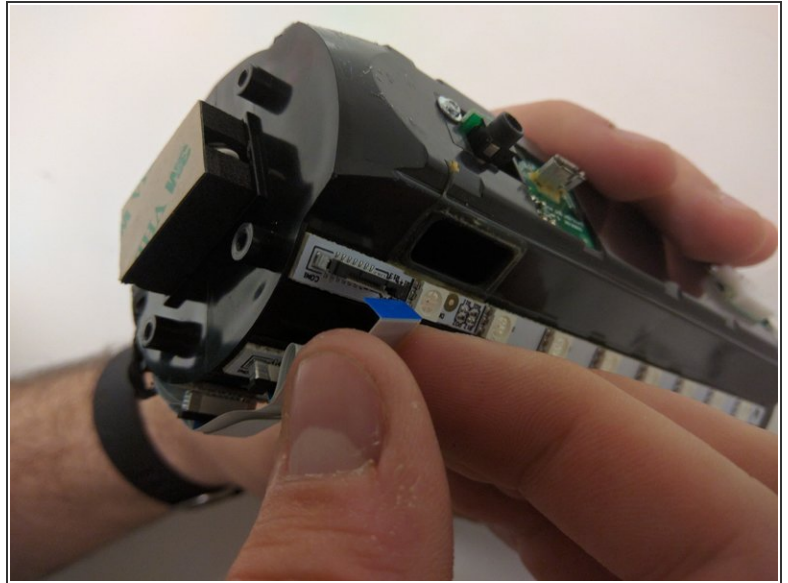
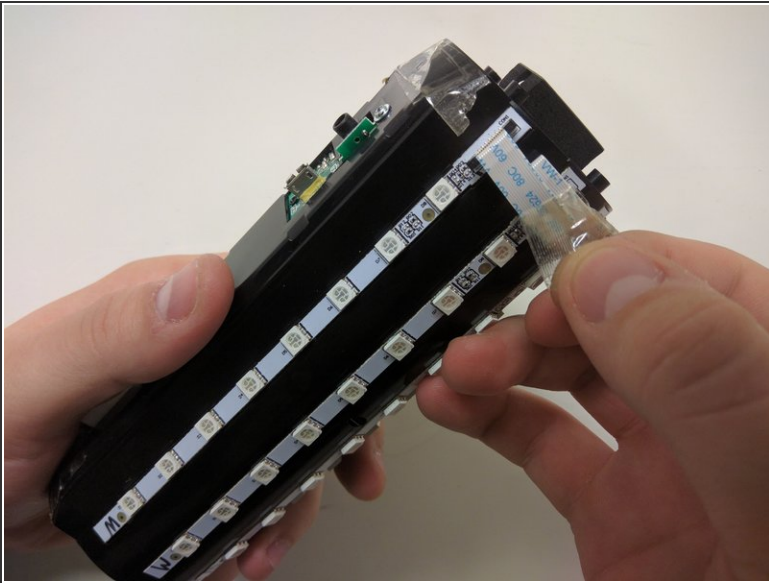
- Pull black piece on top of socket away from board to loosen, then detach the cable.

Step 6 — Outer Casing



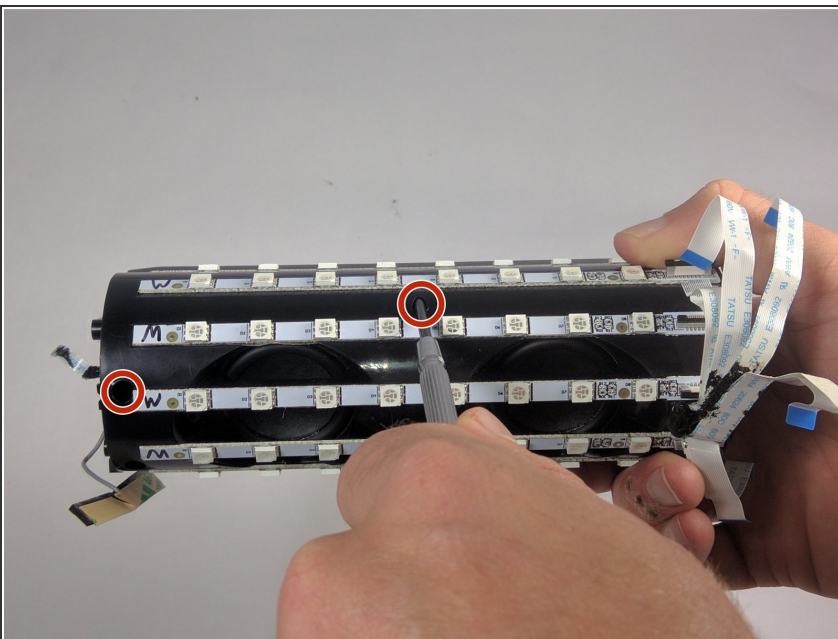
- Take out the four 9mm black PH0 screws from the top and bottom of the device.
- Pull off cap by hand.
- The outer casing can now be removed.

Step 7 — JBL Pulse LED Lights Disassembly



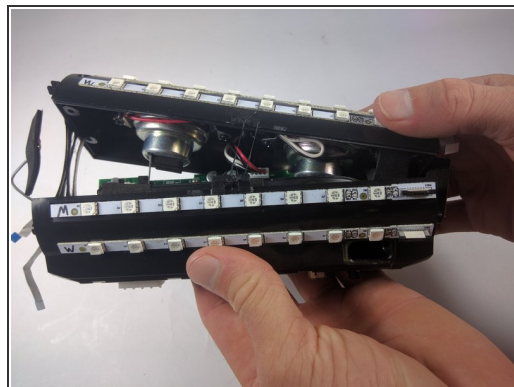
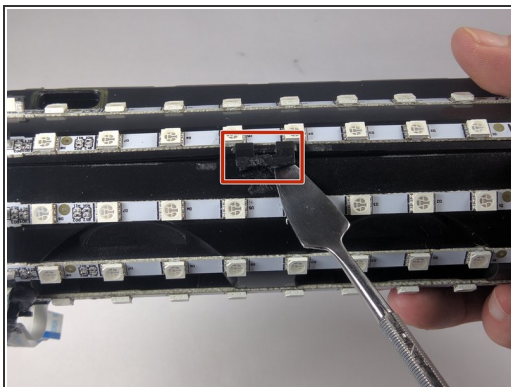
- Remove the tape around the cables on the top of the device.
- Remove the cables by lifting up on the black bracket and then pulling the cable out.

Step 8 — JBL Pulse Disassembly



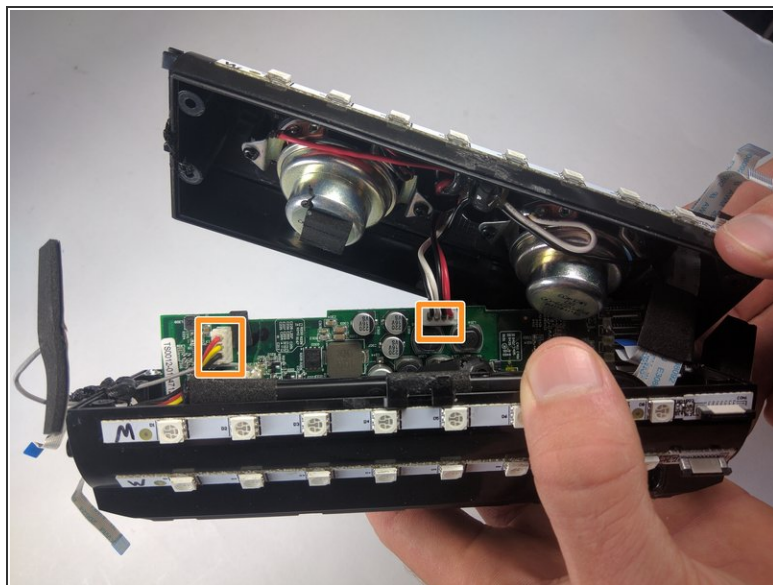
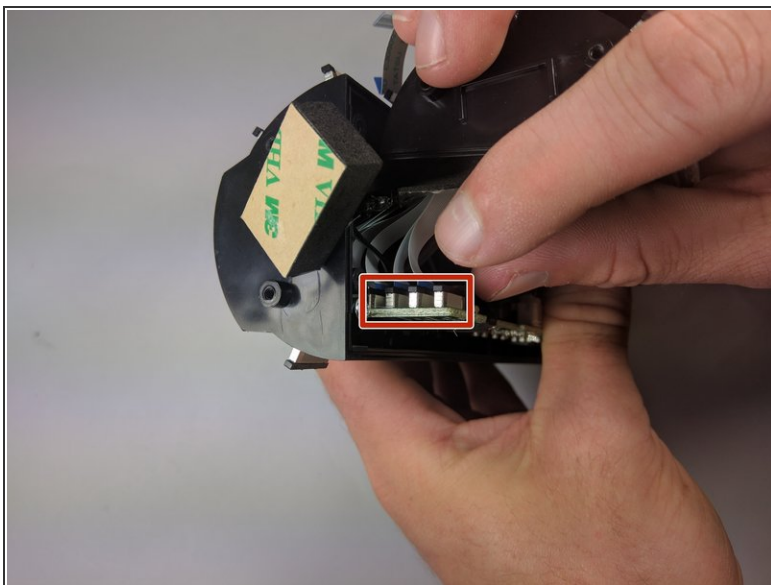
- Remove two black 9mm PH0 screws from outside of inner casing on each side.

Step 9



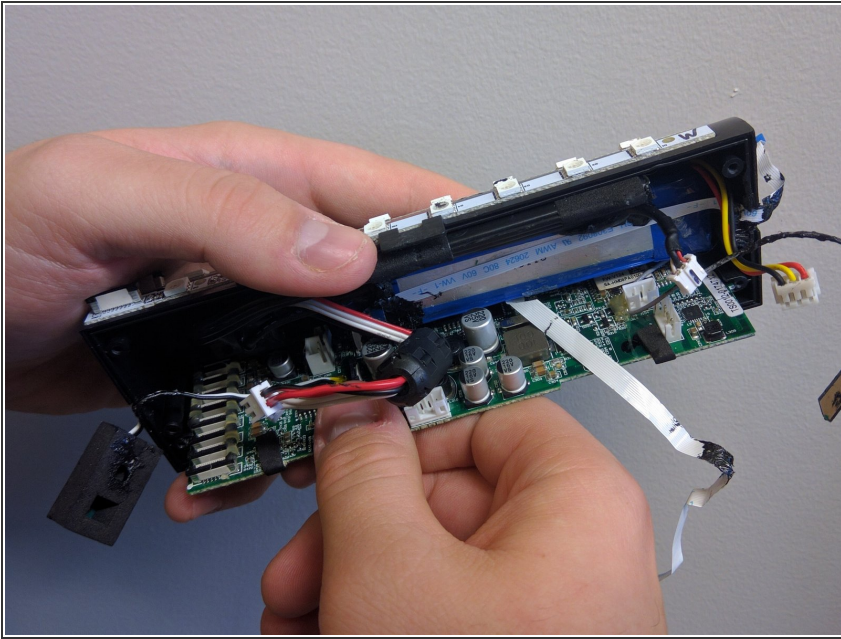
- Use your metal spudger to unhook the bracket holding the case together.
- Pull apart the casing with your hands.

Step 10



- Remove the cables by lifting up on the black bracket and then pulling the cable out.
- Remove cables by pulling firmly.

Step 11 — Motherboard



- Once all of the cables are removed, grip the motherboard and slide it out.

To reassemble your device, follow these instructions in reverse order.