



JBL Pulse Speakers Replacement

A guide on how to replace the speakers within the device.

Written By: Maxwell Busenbarrick



INTRODUCTION

This guide shows how to replace the speaker inside of the device. Replacing the speakers is only necessary if the device is playing distorted or no audio.

TOOLS:

- [iFixit Opening Tools](#) (1)
 - [Phillips #0 Screwdriver](#) (1)
 - [Metal Spudger](#) (1)
 - [Soldering Iron](#) (1)
 - [Flush Wire Cutters](#) (1)
-

Step 1 — Button Board



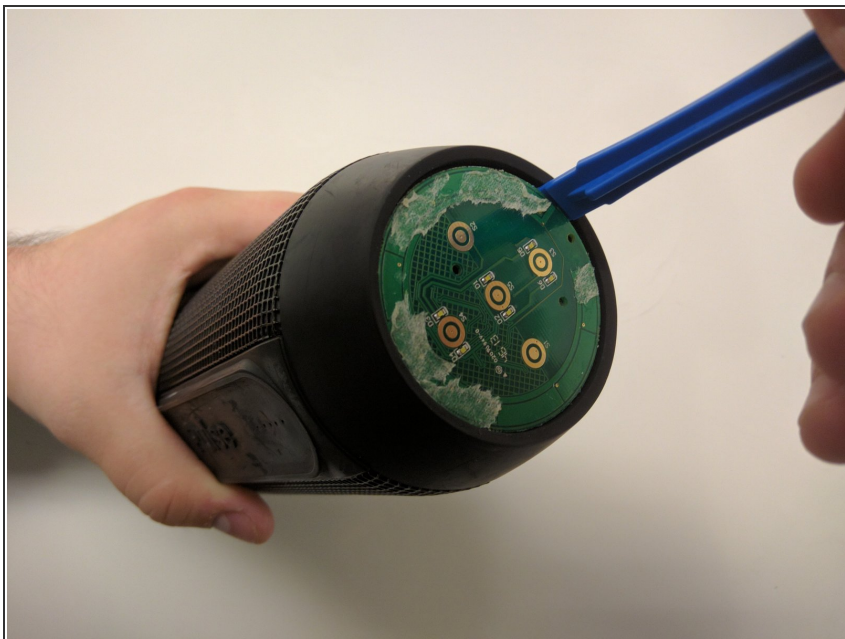
- Use a plastic opening tool to pry around the edges of the circular rubber panel.

Step 2



- Once the edges are loose, pull off the rubber button panel completely.
- ☑ New adhesive will have to be applied when reassembling.

Step 3



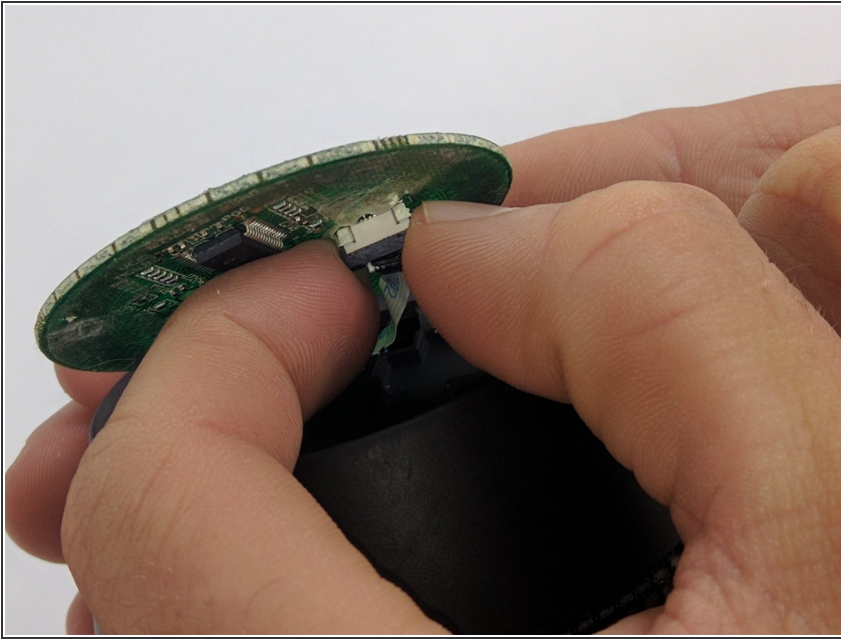
- Use your plastic opening tool to pry the button board loose by lifting the edges.

Step 4



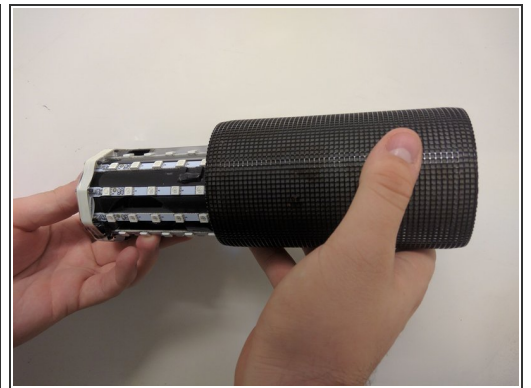
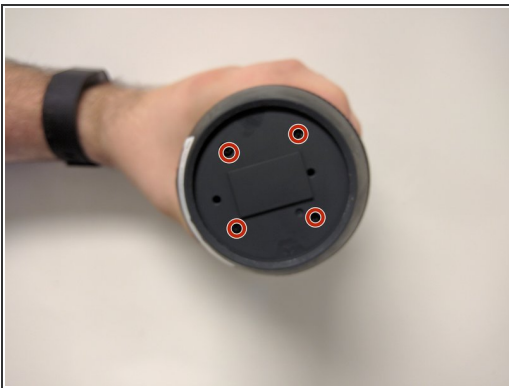
- Lift the button board, exposing the attached cable.
- ☑ New adhesive will have to be applied when reassembling.

Step 5



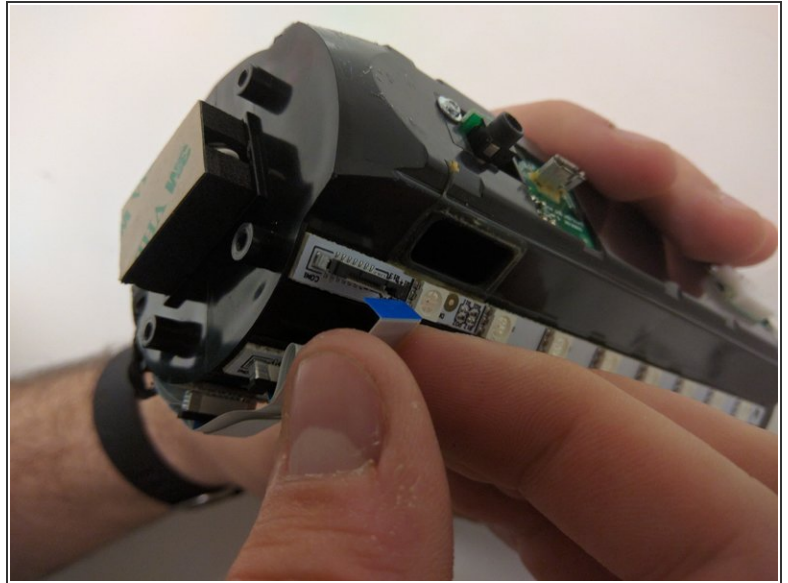
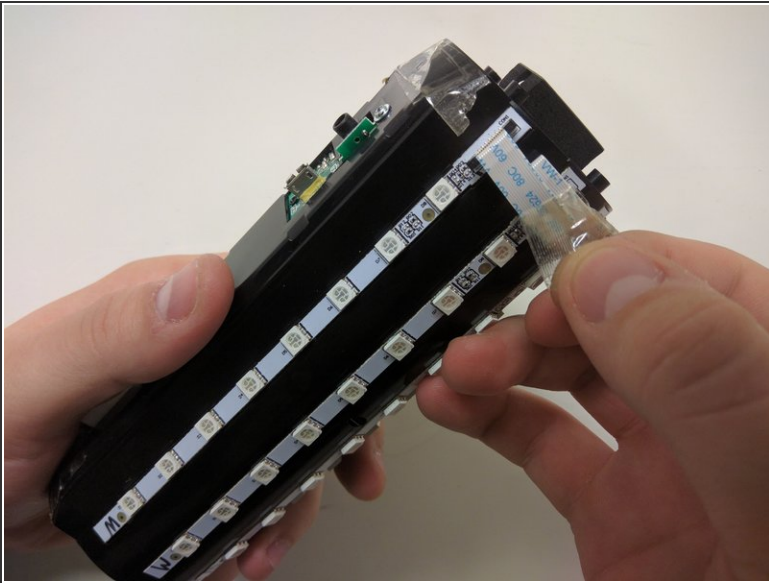
- Pull black piece on top of socket away from board to loosen, then detach the cable.

Step 6 — Outer Casing



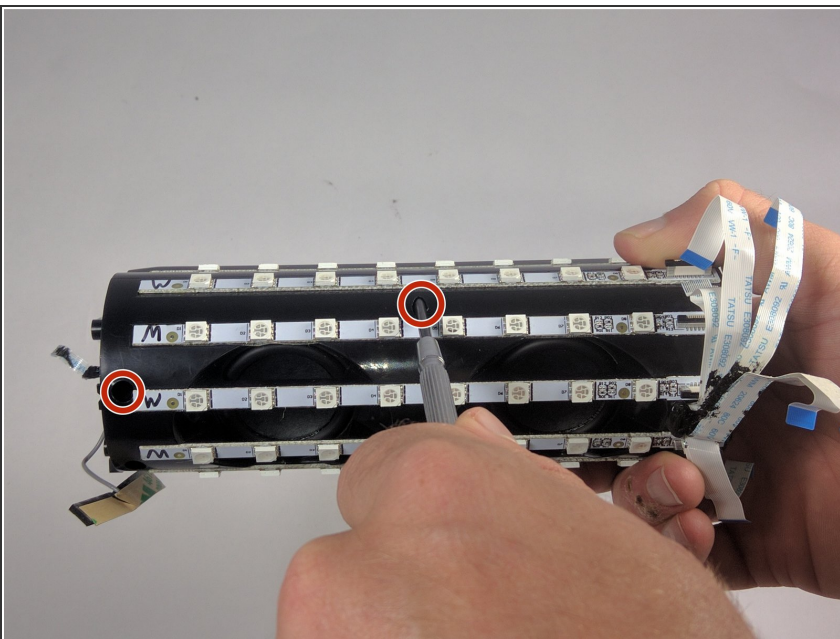
- Take out the four 9mm black PH0 screws from the top and bottom of the device.
- Pull off cap by hand.
- The outer casing can now be removed.

Step 7 — JBL Pulse LED Lights Disassembly



- Remove the tape around the cables on the top of the device.
- Remove the cables by lifting up on the black bracket and then pulling the cable out.

Step 8 — JBL Pulse Disassembly



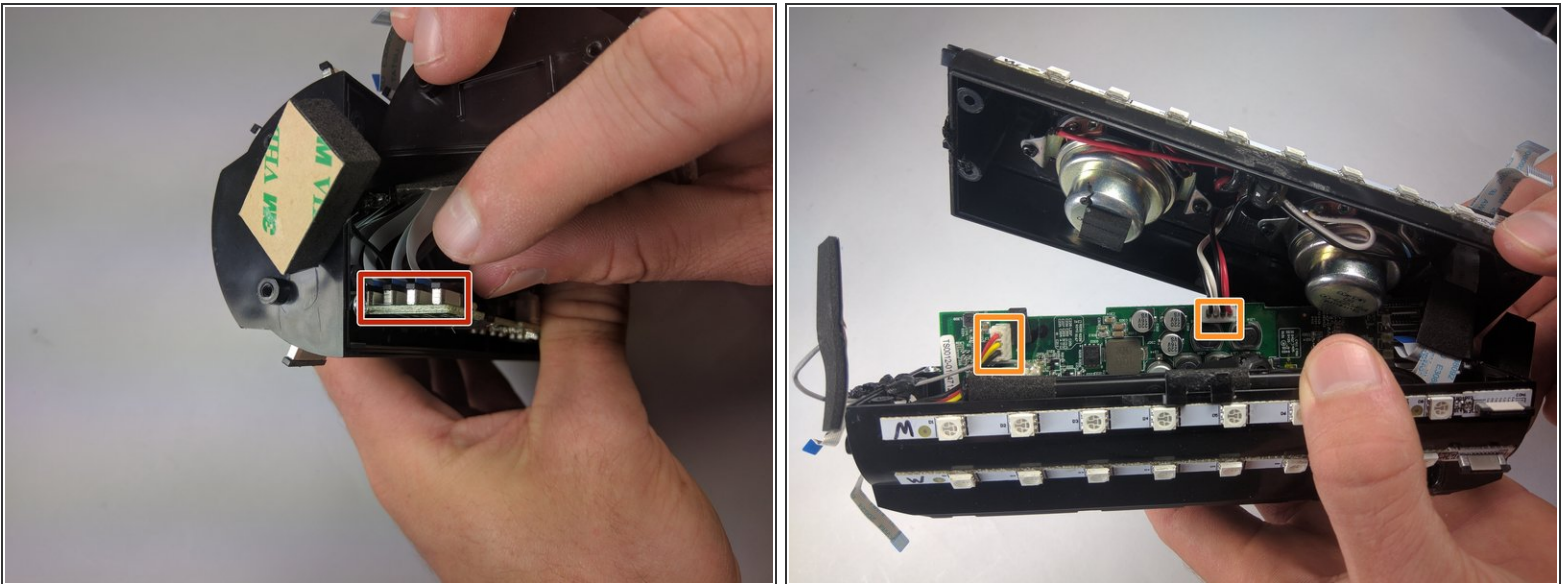
- Remove two black 9mm PH0 screws from outside of inner casing on each side.

Step 9



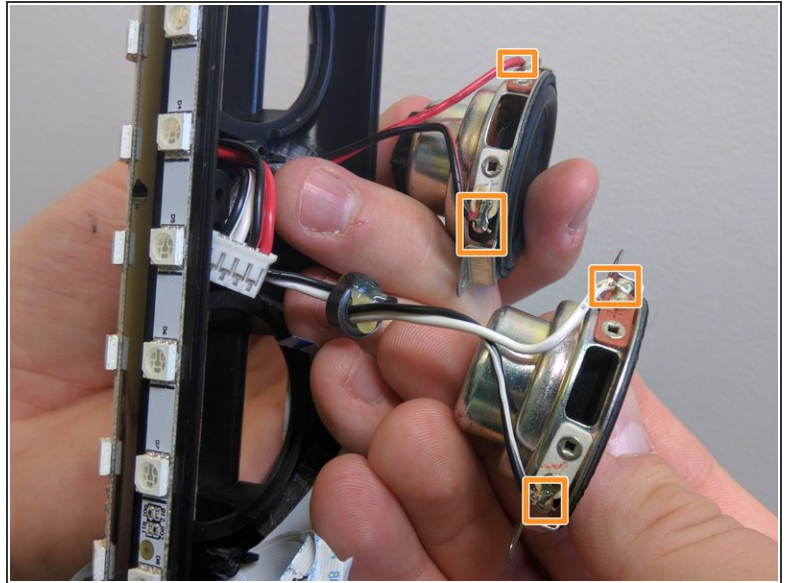
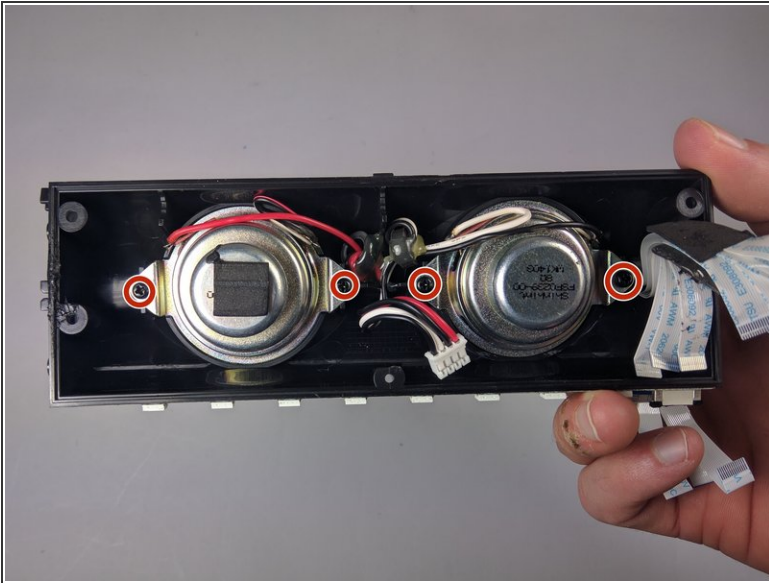
- Use your metal spudger to unhook the bracket holding the case together.
- Pull apart the casing with your hands.

Step 10



- Remove the cables by lifting up on the black bracket and then pulling the cable out.
- Remove cables by pulling firmly.

Step 11 — Speakers



- Remove four black PH0 9mm screws.
- The only thing still attaching the speakers is the wires to the soldering points. Cut wires at soldering points.
- ✦ New speakers will have to be re-soldered to these wires.

To reassemble your device, follow these instructions in reverse order.