



JBL Xtreme Speaker Replacement

This guide will show you how to remove the speakers of a JBL Xtreme.

Written By: Benny Huynh



INTRODUCTION

This guide will offer sound advice to help you remove and replace your JBL Xtreme's speakers.

TOOLS:

- [Magnetic Project Mat](#) (1)
 - [Metal Spudger](#) (1)
 - [Phillips #1 Screwdriver](#) (1)
-

Step 1 — Cover



- Locate the seams next to the 'feet' on the bottom side of the device.

Step 2



- Use the metal spudger to gently pry and lift the edge of the seam. The cover is held in place with plastic snaps that will make a popping noise when disengaged.

Step 3



- Gently pull back the edges of the case rotating along the hinge opposite the opening seam illustrated in the second photo. Plastic snaps hold the cover in place.

Step 4 — Bass Radiator



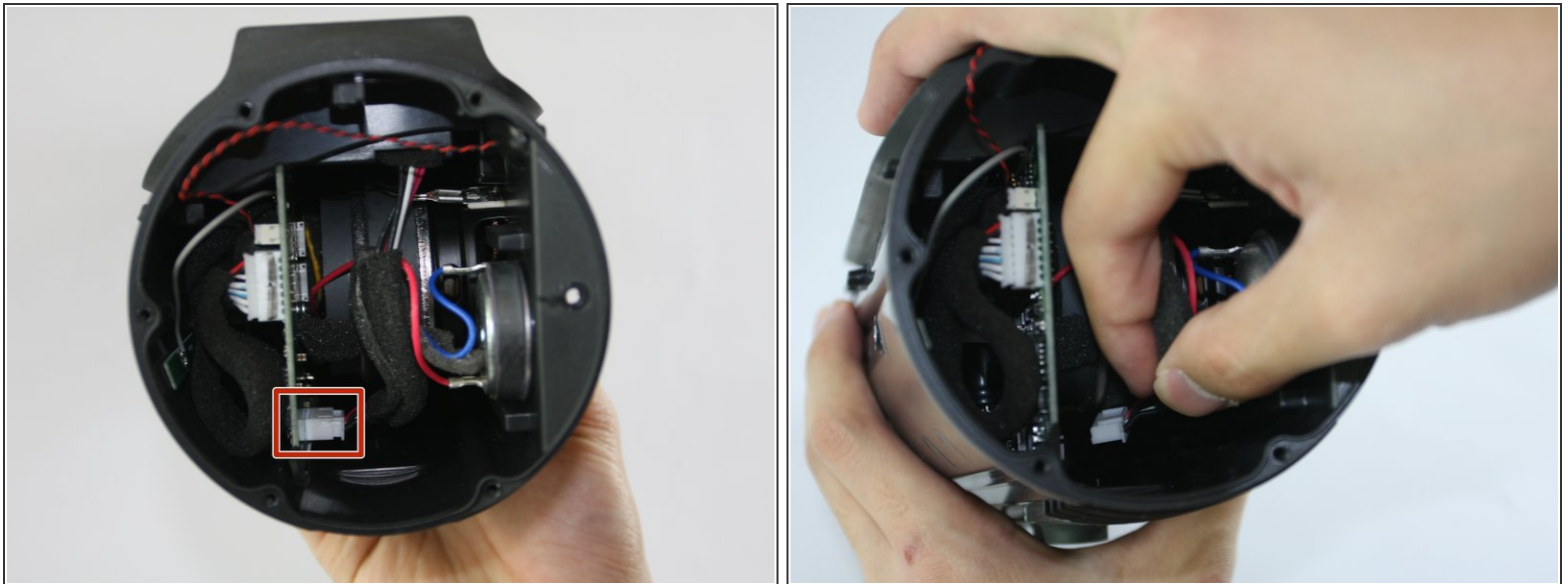
- Unscrew the six 9.75mm Phillips head screws holding the bass radiator in place.
- ⓘ Three of the five outer screws are indicated in the first image and the sixth inner screw is indicated in the second image.

Step 5



- Once the screws have been removed, the bass radiator will easily lift free.
- ⓘ Both radiators are identical. Repeat the above steps on the opposite radiator if necessary.


Step 6 — Speaker



- With the radiators removed, locate the ribbon cable indicated in the image.
- ⓘ Gently unplug the cable from the motherboard.

Step 7



- First, unscrew the eight 12.93mm Phillips head screws indicated in red. These screws hold the two primary speakers in place.
 - Next, remove the four 9.75mm Phillips head screws for the two smaller speakers indicated in blue and the speakers should lift out with little effort.
-  All speakers are connected via the single cable highlighted in the previous step.

To reassemble your device, follow these instructions in reverse order.