



# JIAYU F1 Camera Lens Replacement

Replace your broken JIAYU F1 camera lens.

Written By: Samantha Fruge



# INTRODUCTION

This guide will provide instructions on how to replace the rear camera lens.



## TOOLS:

- [iFixit Opening Tools](#) (1)
  - [Precision Tweezers Set](#) (1)
  - [Phillips #00 Screwdriver](#) (1)
-

## Step 1 — Turn Off the Phone



- Turn the phone off by holding down the power button located on the top of the phone.

## Step 2 — Remove the Back Case



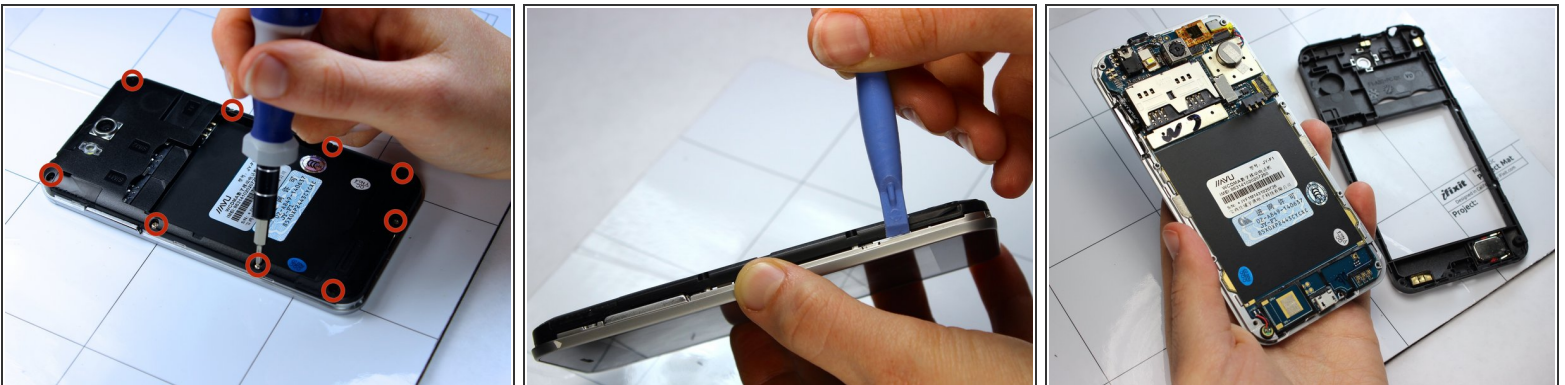
- Find the small indentation at the bottom right of the phone and pry open the back case of the phone using your fingernail or small plastic opening tool.
- Gently remove the back case completely from the phone.

### Step 3 — Remove the Battery



- Insert a fingernail or the small plastic opening tool into the recess in the bottom center of the battery and lift upward.
  - Remove the battery from the phone.
- i** *When replacing the battery, align the copper ports on the top right of the battery with the corresponding ports in the battery cavity.*

### Step 4 — Remove the Interior Midframe Assembly



- With the phone lying face down, remove the nine 3 mm Phillips # 00 screws from the midframe.
- Gently run a plastic opening tool down along the left and right sides of the phone to separate the black midframe assembly from the silver display casing.
- Carefully remove the midframe assembly from the display casing by pulling up and away from the phone.

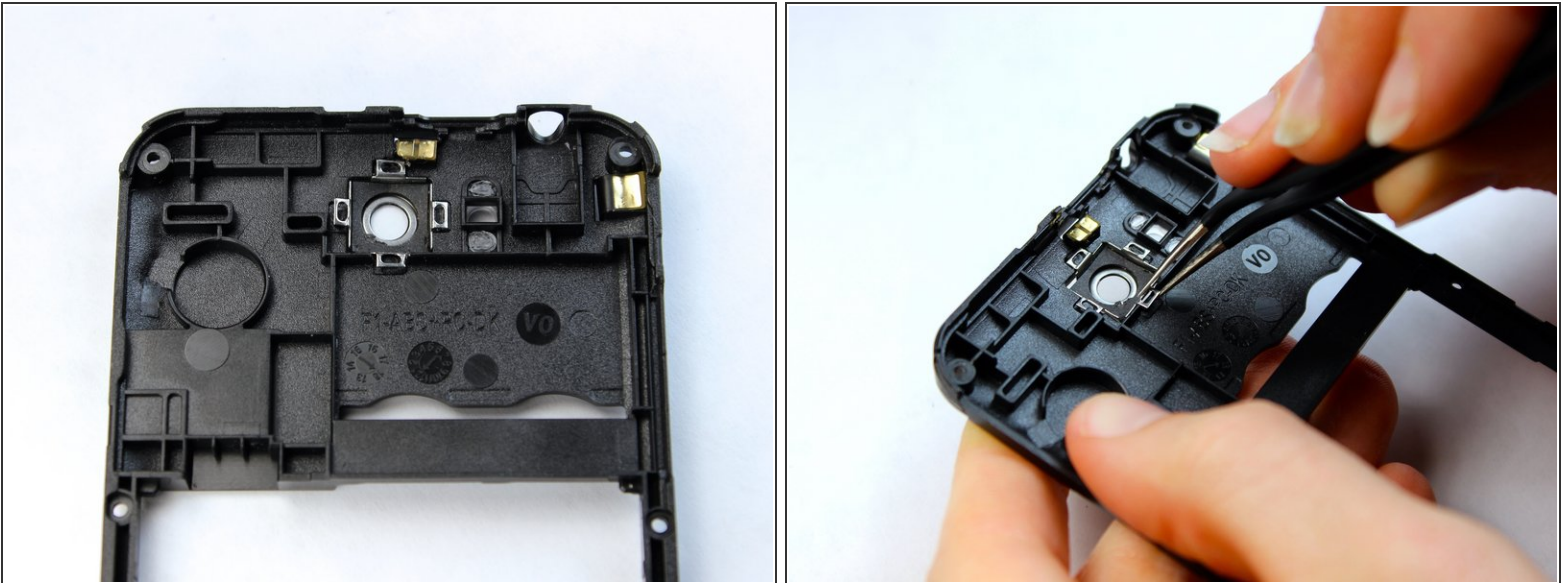


## Step 5 — Remove the Camera Lens



- Holding the midframe face-up, locate the camera lens near the top center of the midframe.
- Use your finger to gently apply pressure against the lens until it pops out of the back of the midframe.

## Step 6 — Replace the Camera Lens



- Turn the frame over so that it is face-down.
- Using the precision tweezers, place the new camera lens into the lens cavity and align the clasps against the grooves in the midframe.
- Using your finger, apply pressure on the lens until the clasps pop onto the grooves.

To reassemble your device, follow these instructions in reverse order.