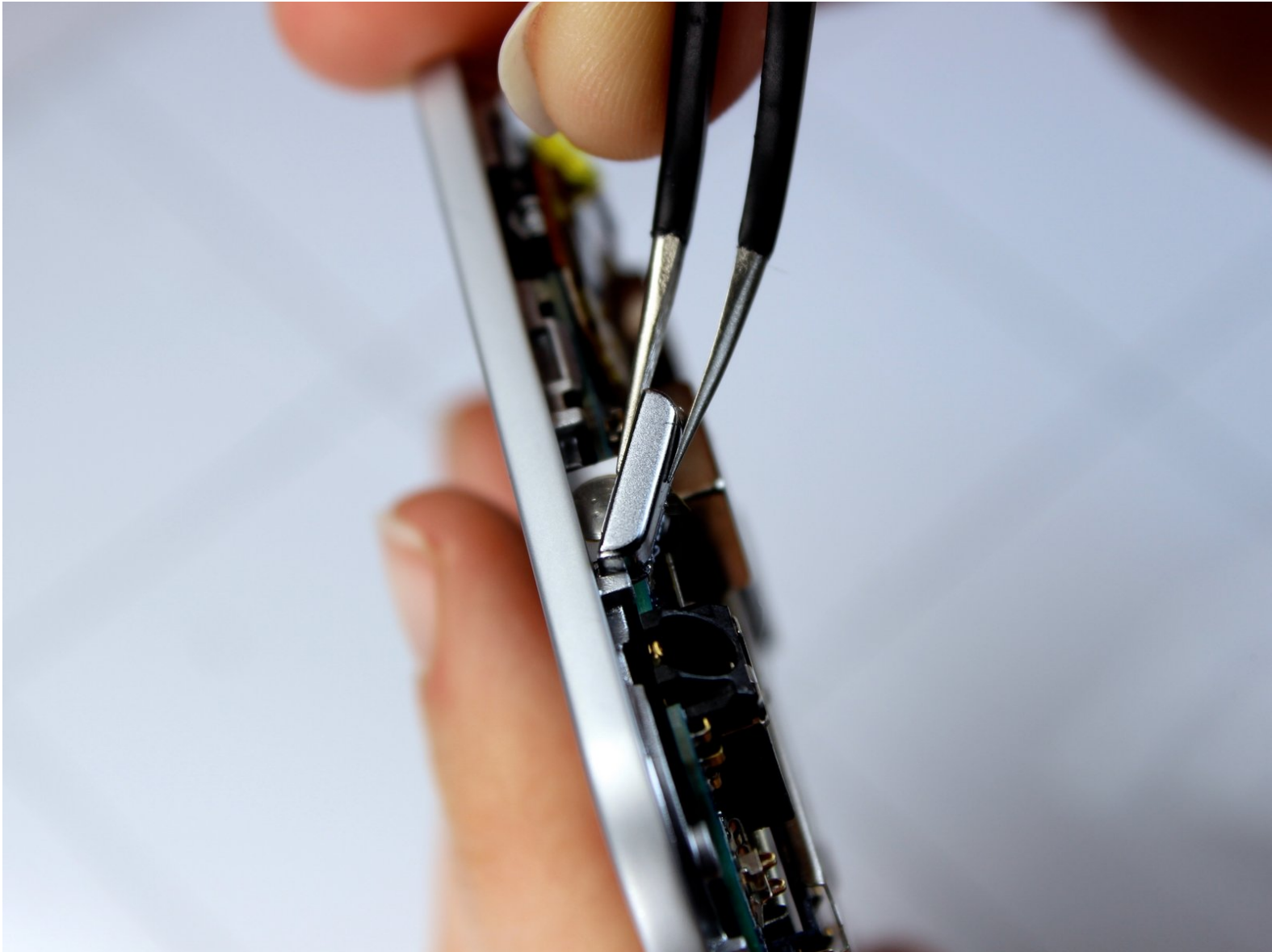




# JIAYU F1 Power Button Replacement

Replace the power button on your JIAYU F1.

Written By: Nicole



# INTRODUCTION

This guide will provide instructions on how to replace the power button.

---

## TOOLS:

- [iFixit Opening Tools](#) (1)
  - [Precision Tweezers Set](#) (1)
  - [Phillips #00 Screwdriver](#) (1)
-

## Step 1 — Turn Off the Phone



- Turn the phone off by holding down the power button located on the top of the phone.

## Step 2 — Remove the Back Case



- Find the small indentation at the bottom right of the phone and pry open the back case of the phone using your fingernail or small plastic opening tool.
- Gently remove the back case completely from the phone.

### Step 3 — Remove the Battery



- Insert a fingernail or the small plastic opening tool into the recess in the bottom center of the battery and lift upward.
  - Remove the battery from the phone.
- i** *When replacing the battery, align the copper ports on the top right of the battery with the corresponding ports in the battery cavity.*

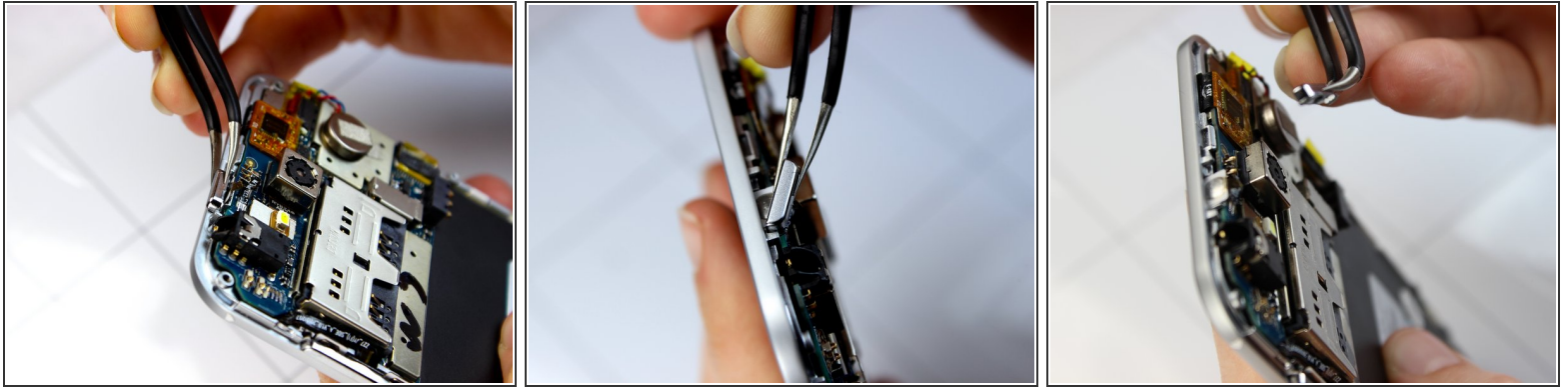
### Step 4 — Remove the Interior Midframe Assembly



- With the phone lying face down, remove the nine 3 mm Phillips # 00 screws from the midframe.
- Gently run a plastic opening tool down along the left and right sides of the phone to separate the black midframe assembly from the silver display casing.
- Carefully remove the midframe assembly from the display casing by pulling up and away from the phone.



## Step 5 — Removing Power Button



- Locate the silver power button at the top of the phone.
  - Use the precision tweezers to slide the power button out of the groove.
- i** When replacing the power button align the flat side of the button to the silver edge of the display with the rounded edge facing the black frame.*

To reassemble your device, follow these instructions in reverse order.