



# JURA Brewgroup Disassembly

Written By: Schwarzstein



---

## INTRODUCTION

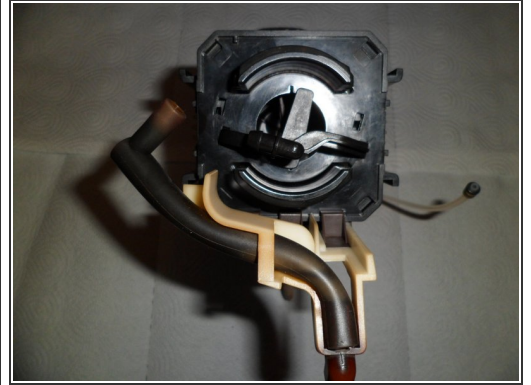
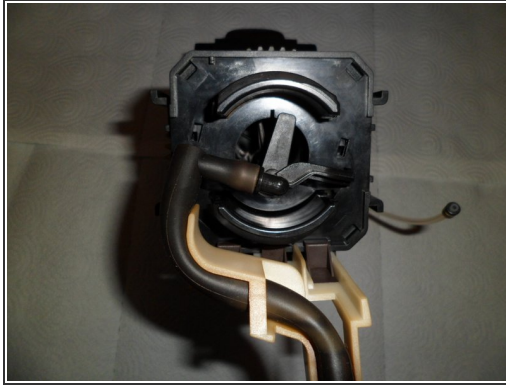
The Jura brew group is in many Coffee Makers. When it moves slowly, it should be cleaned. Also when a seal is broken (when water leaks out) you have to open it.



### TOOLS:

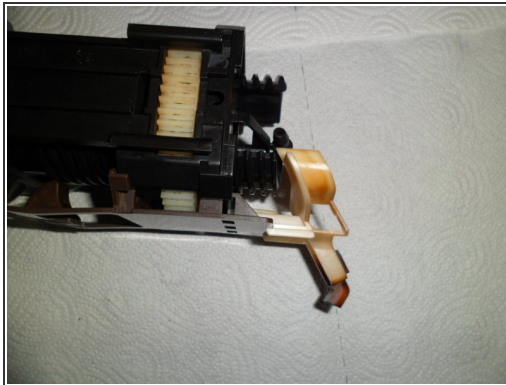
- [Phillips #2 Screwdriver](#) (1)
-

## Step 1 — JURA Brewgroup Disassembly



- When deinstalled a Jura brew group, it only has ONE screw (in the metal strainer, its a PH2). Everything is easlily clicked together.
- First you pull off the coffee hose on top. Just pull.

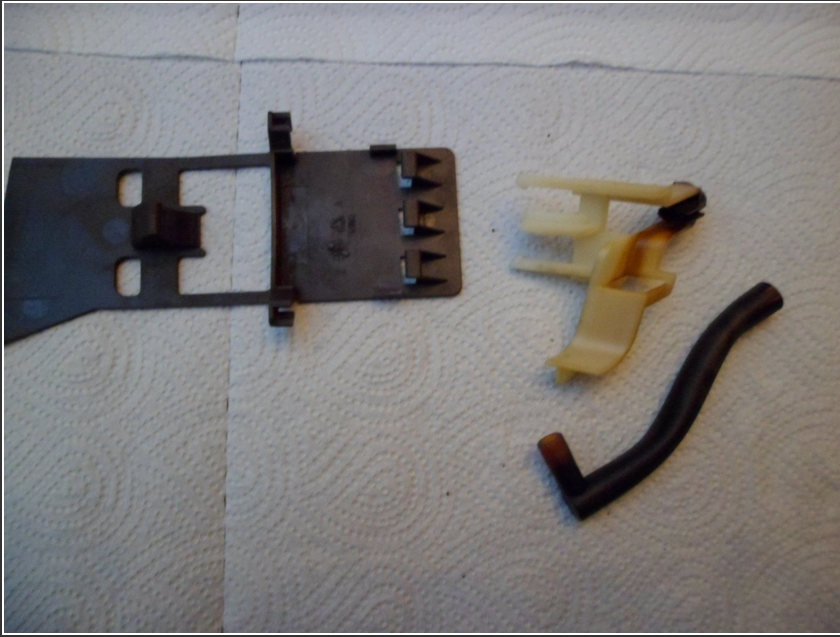
## Step 2



- Also pull off the hose at the other end.
- Pull off the shovel. It's clipped at top. It's very flexible.
- For this guide I have chosen a allready cleaned brew group. When you maintenance this, it will be very greasy and everywhere will coffee crumbs skip away. Take some Paper-towels to work on. For degrease take Toothpick, Toothbrush and Degrease-spray.



### Step 3



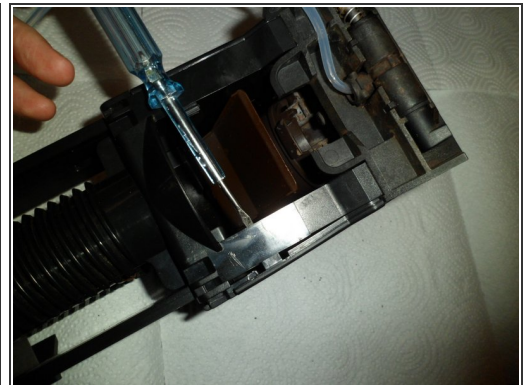
- Here you can see the clipse of the shovel, also the white part which holds the coffee-hose in place.

## Step 4



- The upper part of the coffee-tube is also clipped in. Turn it and push the clips. It will snap off. There is no sealing-ring. The sealing-ring for this connection is inside the upper coffee-piston on top of the tube from the Crema-Valve. I show it later.
- The cover over the white gearwheel has 4 clipse, one at each corner. Use a small screwdriver to leverage it up.

## Step 5



- Now release the side cover. It has 4 clipse. You can open them by pushing with a fingertip or a small screwdriver.

## Step 6



- Detail of the four clips. Be careful they may break.

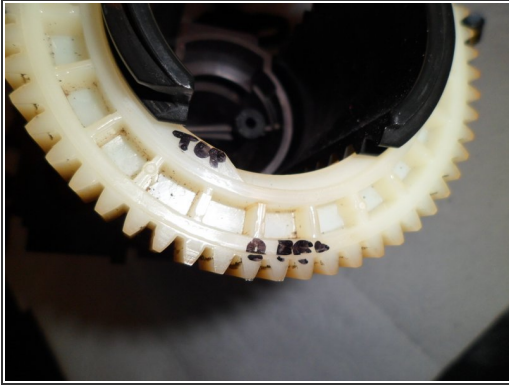
## Step 7



- I don't know how this piece is named. It can easily be pulled up like shown on the photos.
- There is a small metal ring. The screwdriver points at it. Lift it up.
- On the other side the same procedure.
- In the brew group are totally FOUR metal rings. One is at this part on each side, and one is inside the mechanic on each side.

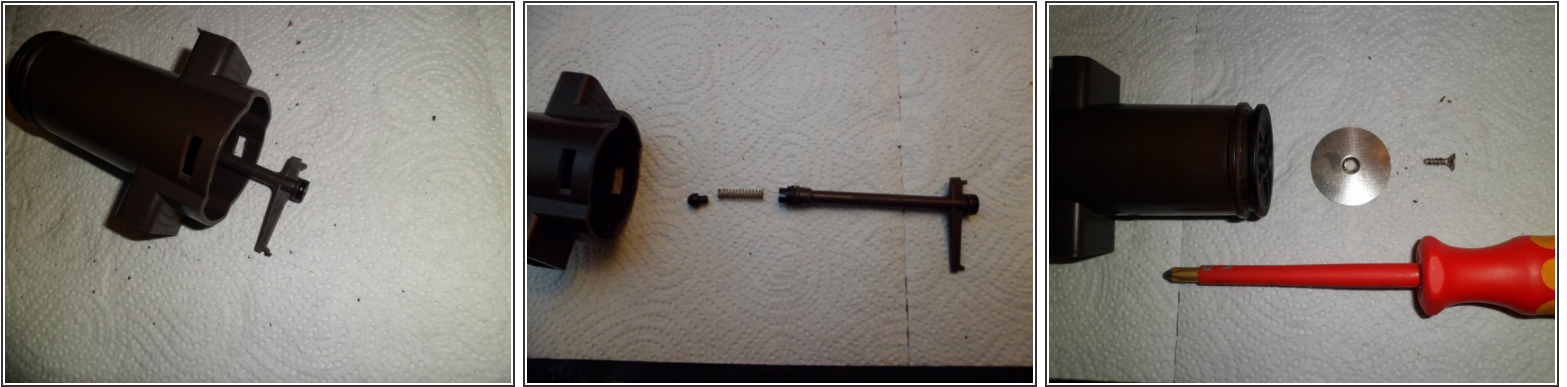


## Step 8



- Now write "TOP" on the white gearwheel. When it's mounted upside down when reassembled it can't rotate properly. Really truth.
- Turn off the Gearwheel and pull out the upper brew-cylinder (Piston).
- Now you can change the seal-ring.
- If a broken seal was the problem and you don't wish to dissect the brew-group to the end you can now start to reassemble the way backwards. :) But think about it: At the lower brew-group-piston is a sceond seal-ring.

## Step 9



- Inside the upper Piston is a pipe which can be turned a bit and then pulled out. Carefully. At both ends are black sealings. Please note the orientation of that piece !
- Inside this Coffee-Pipe at the lower end is the Crema-Valve. This Valve makes the pressure in the coffee-fluid; that makes the good Taste and Crema from the etheric oils of the coffee-beans because the Coffee is squeezed through this valve. Thats the secret why a Jura coffee tastes great. :)
- The Crema-Valve Nozzle has a spring and a rubber lid. Both can easy pulled away.
- On the other side of the piston is the coffee strainer. It's hold in place by a PH2 screw. When the screw is turned out the metal strainer can pushed off.

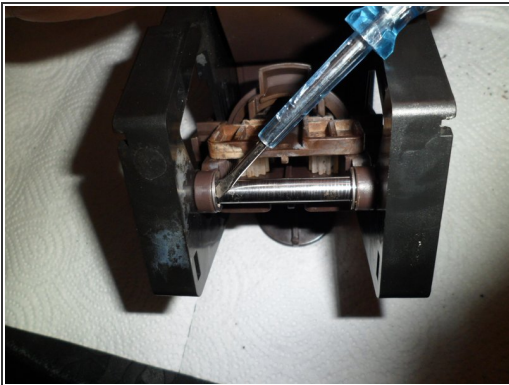


## Step 10



- To get to the lower piston of the brew-group you need to pull away the Drainage Valve.
- Perhaps the Drainage Valve already fell off from the brew-group because it is held in place only by the two side covers of the brew-group. Don't panic, it can simply be pushed back in place.

## Step 11



- Now remove the axle. Inside are two snaprings. The screwdriver points at one. Use the screwdriver to unlock these snaprings.
- Now push the axle through the chassis. When the brew-group is filthy and greasy it will move bad - so lay the brew-group on the side and push the axle with the screwdriver.

## Step 12



- Turn the lower Piston-Gear a bit like shown on the picture. Now should fall off the two rings which I already told earlier.
- Then use the screwdriver to push out the lower Piston from the lower gear mechanic. Please note the POSITION of the Piston because of the orientation of the nozzle where the water flows into the brew-group. If it's mounted wrong at the reassembly the brew-group will break !!!



## Step 13



- The guideway of the lower piston also can pulled off the brew-group. The first picture shows the orientation from piston and guideway how it is right.
- The Gear from the guideway mechanics can by turned a little and also pulled off from the brew-group. The second picture also shows the sealing-ring from the lower piston.

## Step 14



- When a lot of water occurs under the brew-group it could be a damaged seal inside the drainage. So I created a Drainage Valve Special, you find it at Coffe Maker Maintenance.



To reassemble your device, follow these instructions in reverse order.