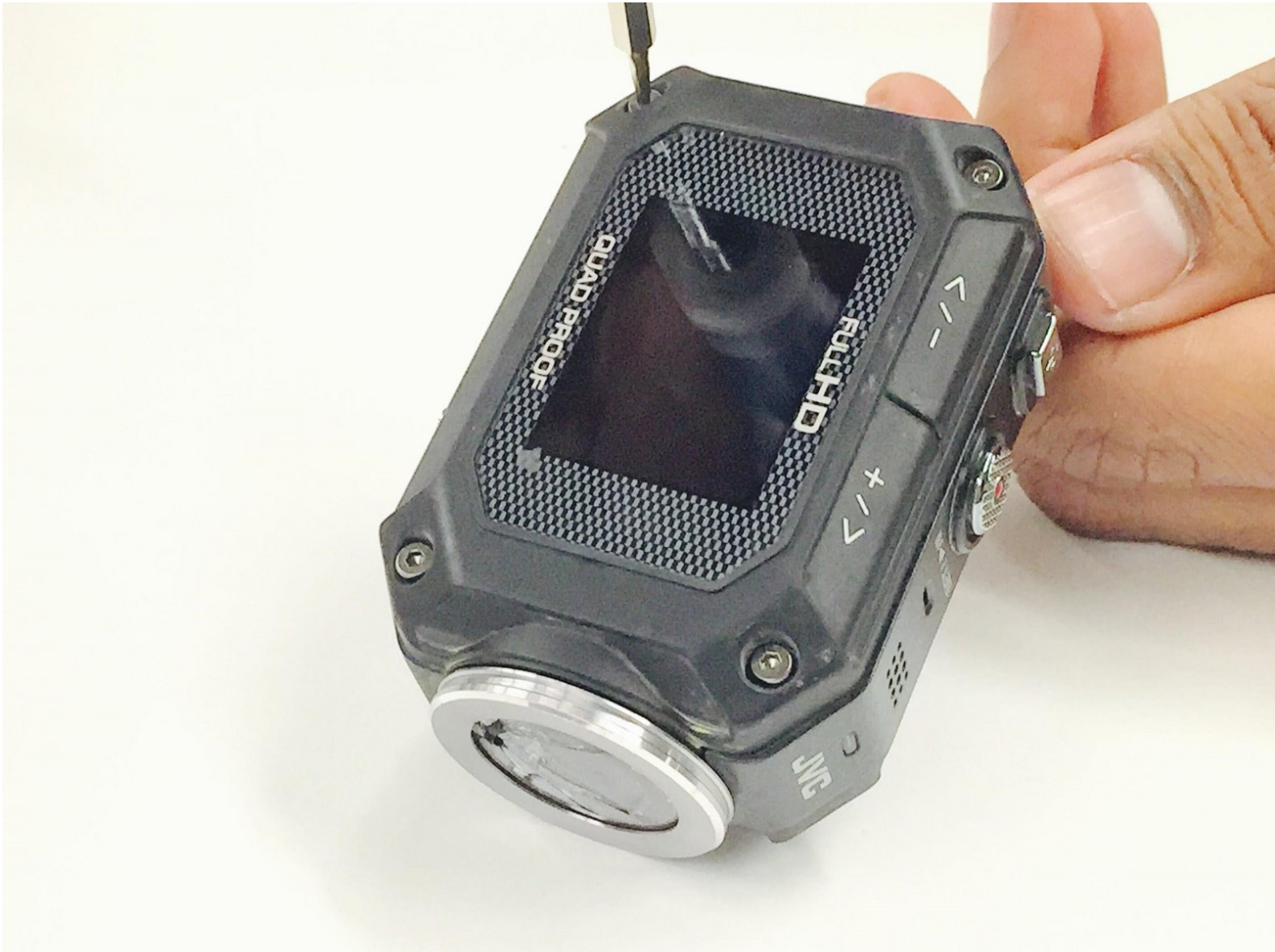




JVC Adixxion GC-XA1BU Lens (External) Replacement

This guide will show you how to replace your external lens.

Written By: Christina Michelle Johnson



INTRODUCTION

To complete this guide, you will need to purchase a new external lens and make sure that you have the tools listed. It is always good practice to make sure that the device is completely powered off and remove the battery before attempting any repairs.



TOOLS:

- [Phillips #00 Screwdriver](#) (1)
 - [iFixit Opening Tools](#) (1)
-

Step 1 — Battery



- Find the side of the camera that looks like this.

Step 2



- Push down on the black switch.

Step 3



- While still pushing down on the black switch, slide back the battery cover (see photo for direction).

Step 4



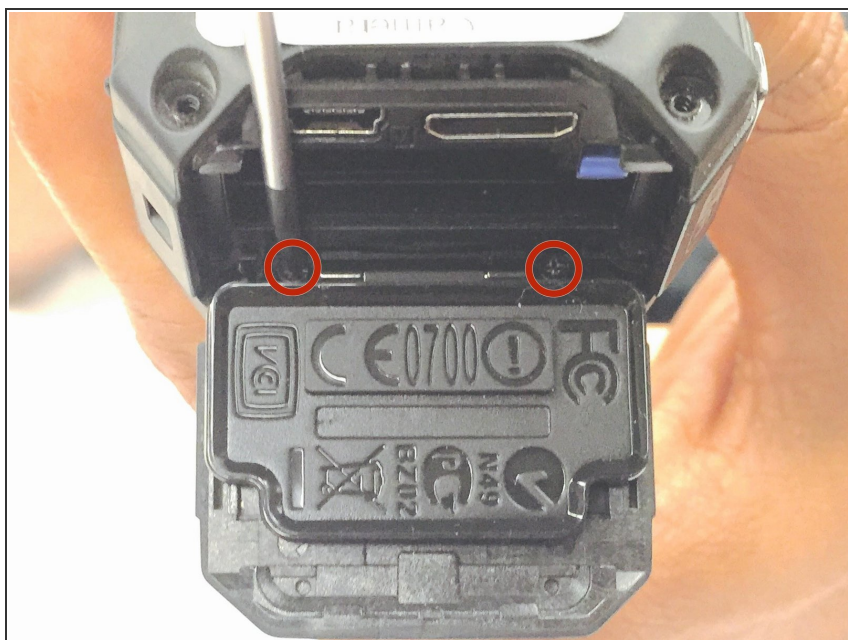
- Push the cover up to open the battery compartment, and then push the blue battery release switch.

Step 5



- You can now take the battery out of the camera.

Step 6 — Battery Cover



- After removing the battery, take out the two Phillips screws (4mm headsize x 3mm length) screws.

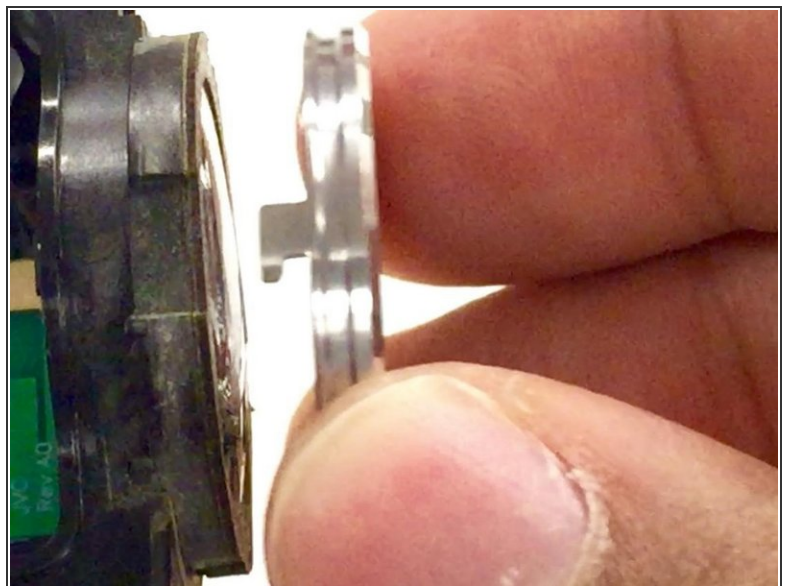
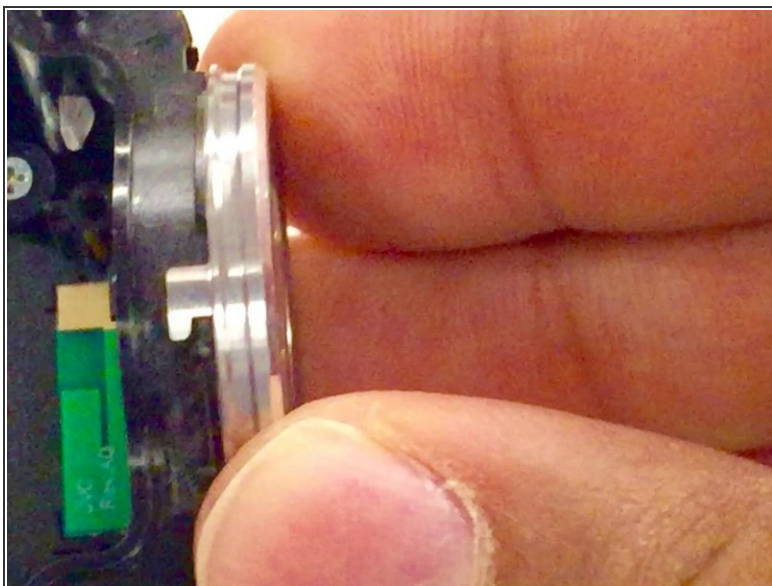
You can now remove the battery cover.

Step 7 — Lens (External)



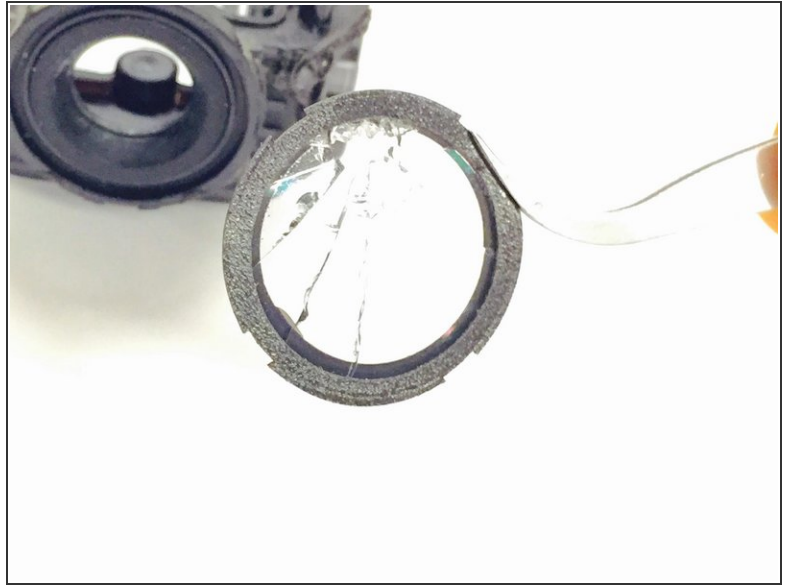
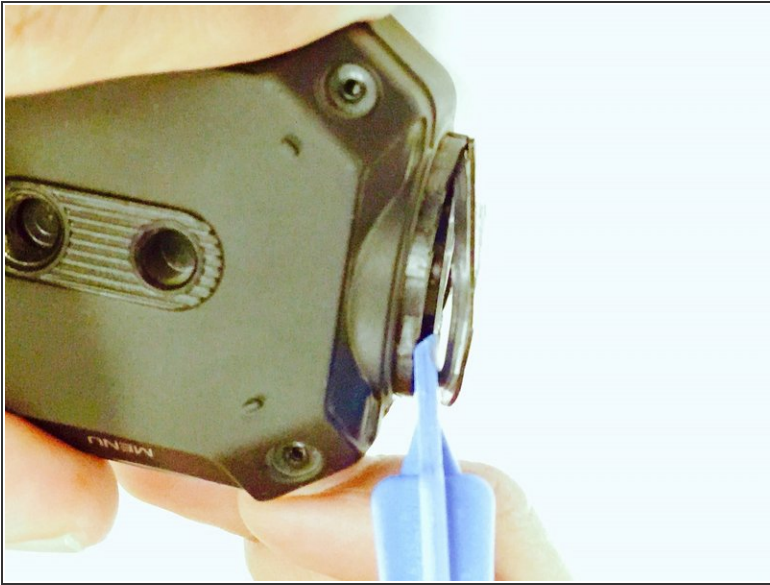
- Using a 1x1xH1.5 torx screwdriver, remove the eight screws (5mm headsize / 4mm length) from the corners of both sides of the camera (4 screws on each side).

Step 8



- Twist the metal ring on the lens to the right and then pull it off.

Step 9



- Use the plastic opening tool to gently pry the lens off of the camera.

To reassemble your device, follow these instructions in reverse order.