



JVC GR-D290U LCD Screen Replacement

This is a step-by-step guide to replace an LCD screen in a JVC GR-D290U camera.

Written By: justin chen



INTRODUCTION

This is a step-by-step guide to replace an LCD screen in a JVC GR-D290U camera.

TOOLS:

- [Phillips #00 Screwdriver](#) (1)
 - [iFixit Opening Tools](#) (1)
-

Step 1 — LCD Screen



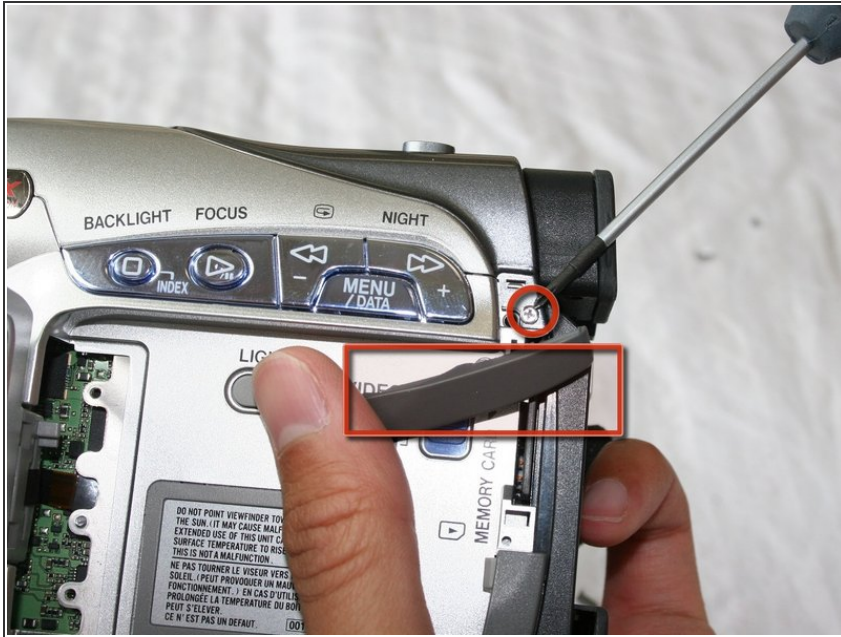
- Remove camera battery. (Not shown.)
- Remove 2 screws connecting back plate to camera base.

Step 2



- Remove 2 screws on side opposite LCD screen.

Step 3



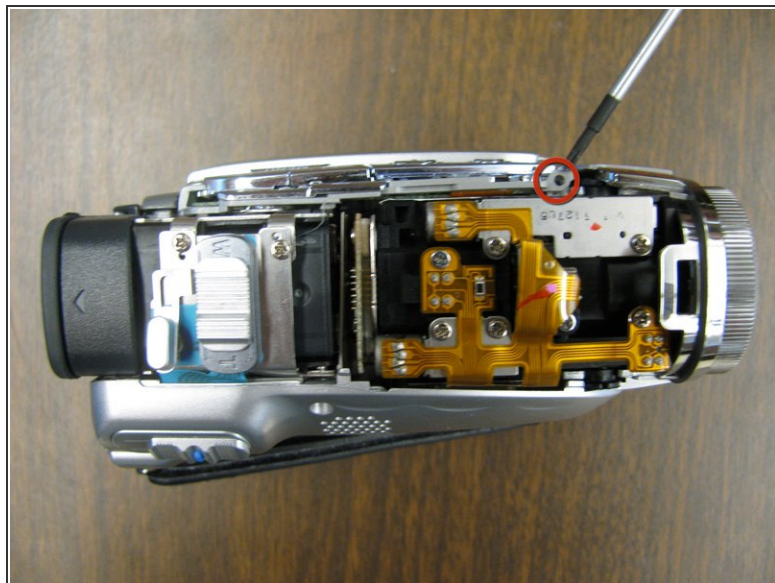
- ❗ Note: Open LCD screen for better access to screw. Reclose screen when finished.
- Lift up dark gray tab on LCD side of camera and move it aside.
- Remove screw under dark gray tab and then replace tab.

Step 4



- Place a plastic opening tool under seam of camera top cover and unsnap cover.
- Pull top cover off camera base and set aside.

Step 5



- Remove 2 screws underneath top cover on LCD side of camera.

Step 6



- Remove 5 screws indicated on bottom plate of camera.


Step 7



- Open LCD screen and remove 2 screws at hinge of screen.
- Remove plastic hinge cover from camera base.
- Close LCD screen when finished.

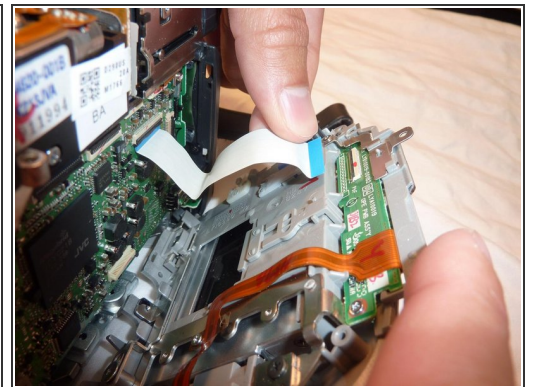
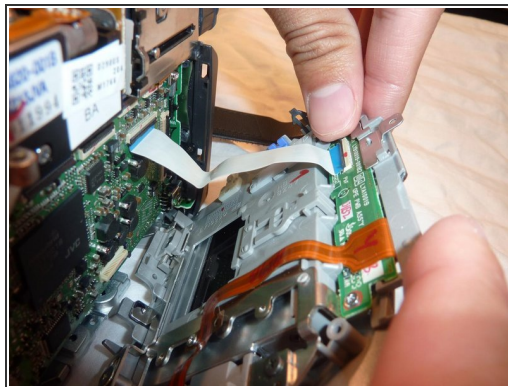
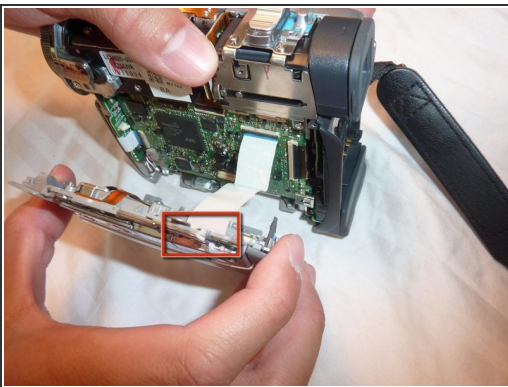
Step 8



 **Warning:** Avoid unattaching internal wiring by prying camera apart slowly and carefully.

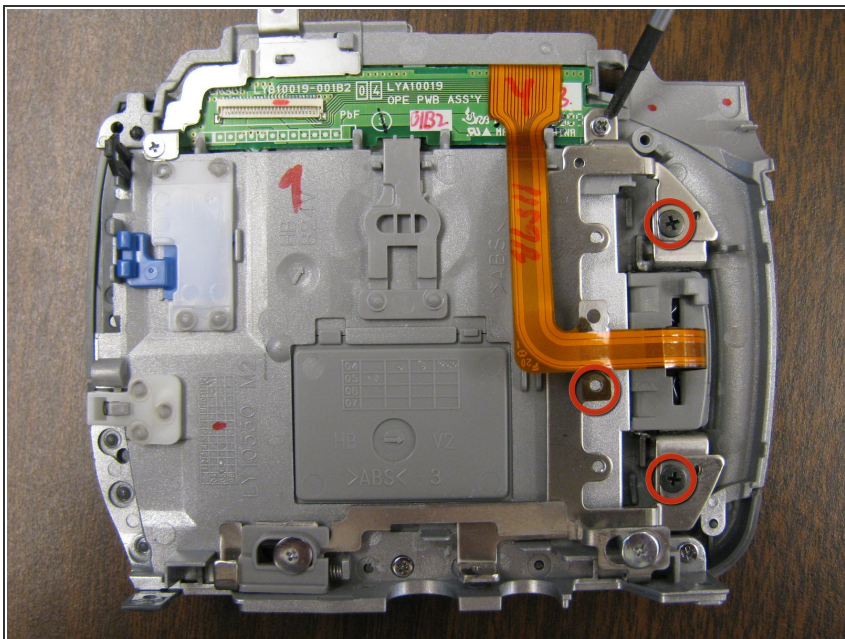
- Start from bottom of camera. Press and hold eject button with one hand.
- Use other hand to pry LCD screen cover from base. Leave labeled side closed.

Step 9



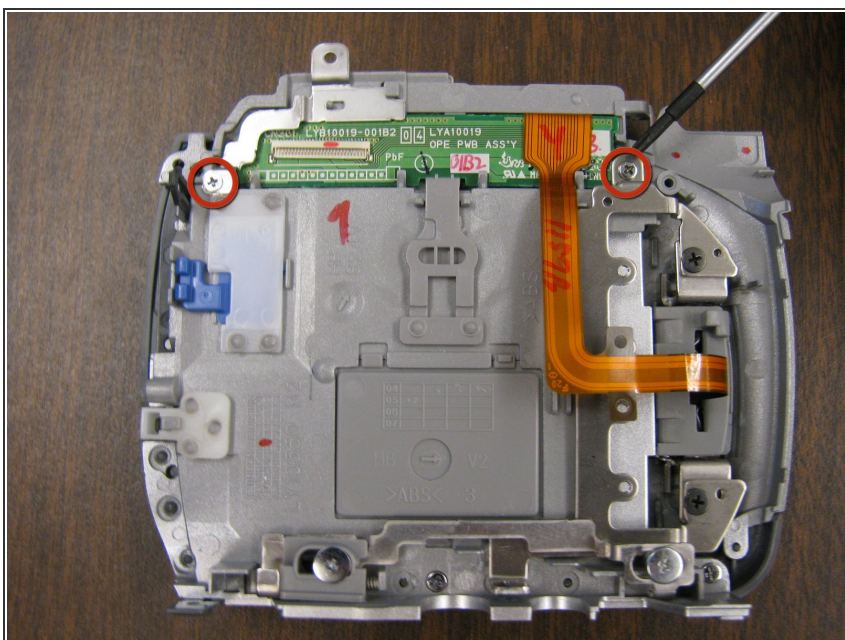
- Unattach white tab from LCD screen side of camera by gently tugging at base of tab.
- Put larger camera base aside.

Step 10



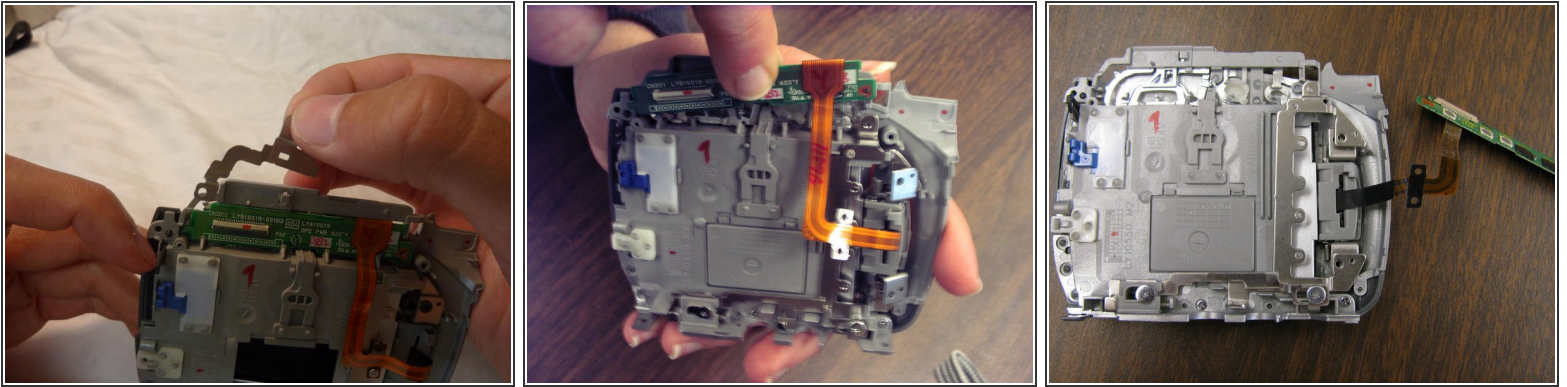
- Remove 3 screws holding LCD screen hinge to base.


Step 11



- Remove 2 screws on green circuit board.

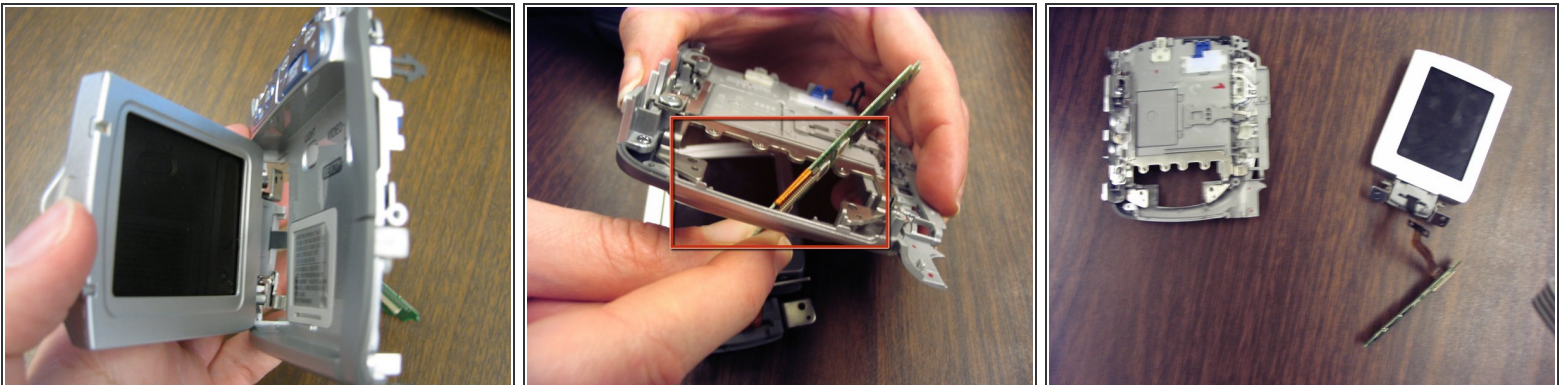
Step 12



 **Warning:** Orange band must stay attached to circuit board at all times.

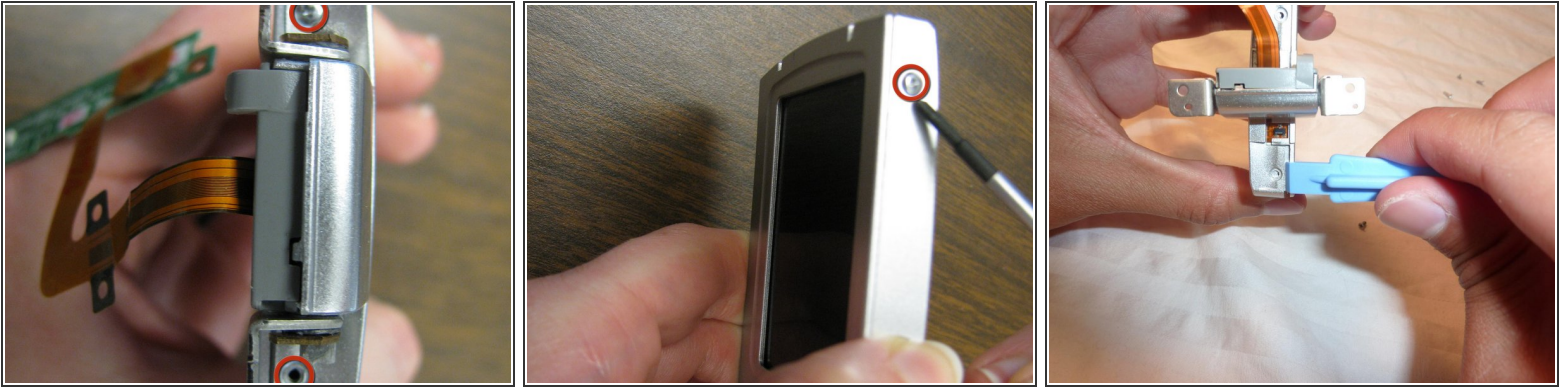
- Remove L-shaped metal piece from upper left-hand corner of circuit board.
- Remove circuit board from cover piece and move aside with orange band intact.

Step 13



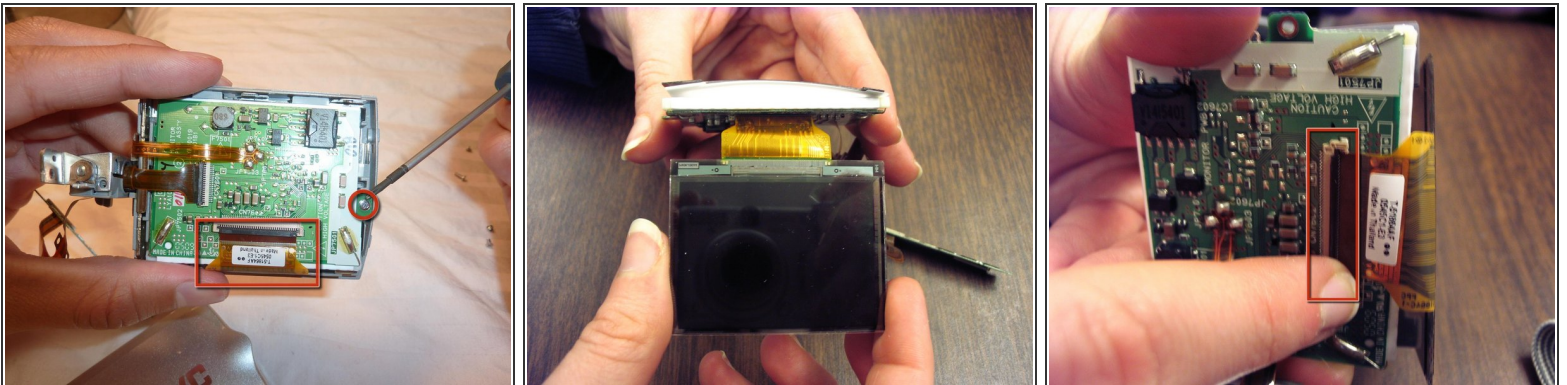
- Open LCD screen and carefully pull circuit board through empty hinge space.
- Set aside larger LCD panel.

Step 14




- Remove 2 screws on hinge side of LCD screen.
- Remove screw at side of LCD screen.
- Pull open with plastic opening tool and pry apart.

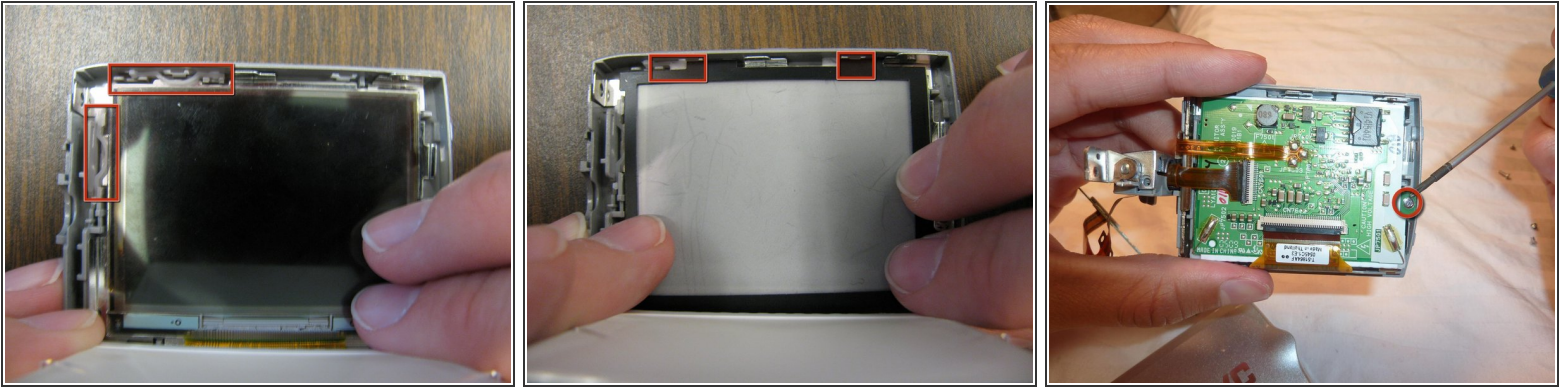
Step 15



- Remove screw in circuit board.
- Pull LCD screen pack from frame with circuit board on top.
- Unattach LCD screen by firmly grasping copper tab and gently tugging until latch unsnaps.

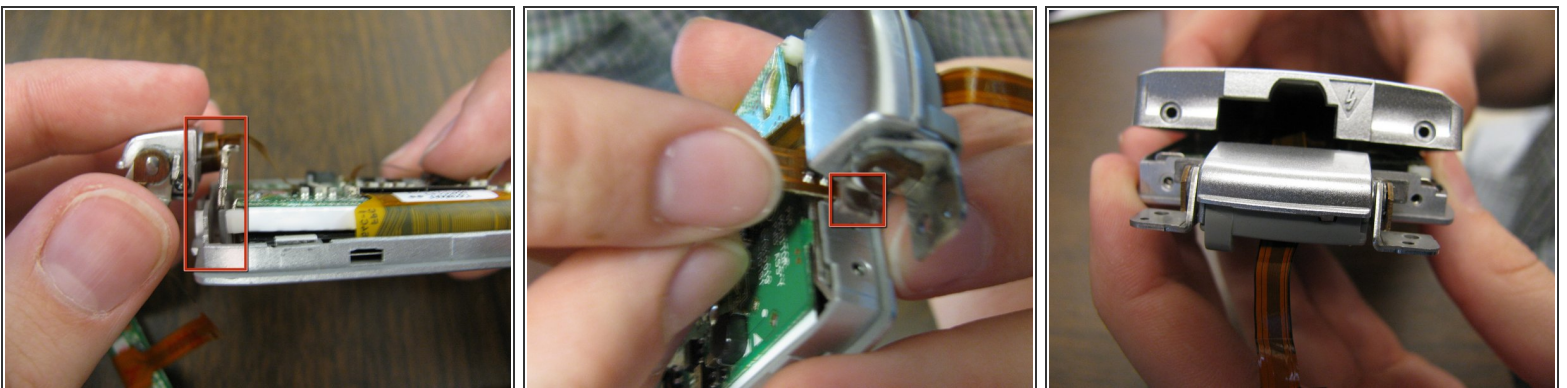
- Connect new LCD screen by fitting in the copper attachment site to the thin, black clasp on the circuit board.
- Fold over black clasp and snap into place.
-  Note: You may need to use the plastic opening tool to snap thin black clasp into place.

Step 17



- Put LCD screen into the silver frame and make sure it lies flat. It should line up with two white, plastic brackets.
- Place the black film frame lined up with the white film into the silver frame. Both should be held in place by tabs.
- Place the circuit board over the film layers.
- Double-check that the LCD screen lies flat in its frame and reinsert the circuit board screw.

Step 18



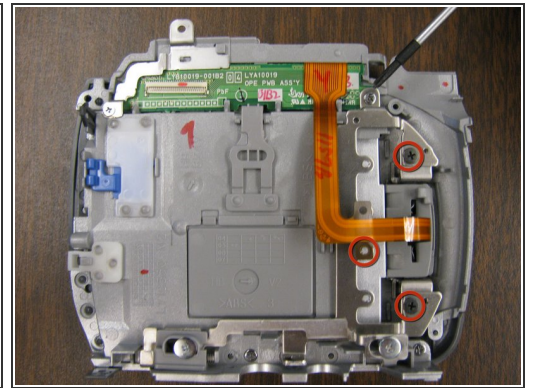
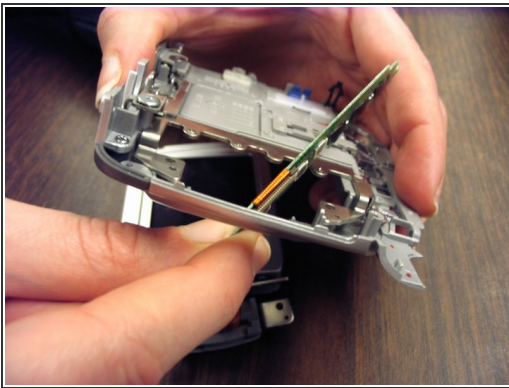
- Before reattaching LCD screen lid, make sure the silver hinge piece is inserted in slot next to circuit board.
- Replace loose orange band in slot on hinge side of LCD screen.
- Snap LCD screen lid back in place starting at side opposite hinge.

Step 19



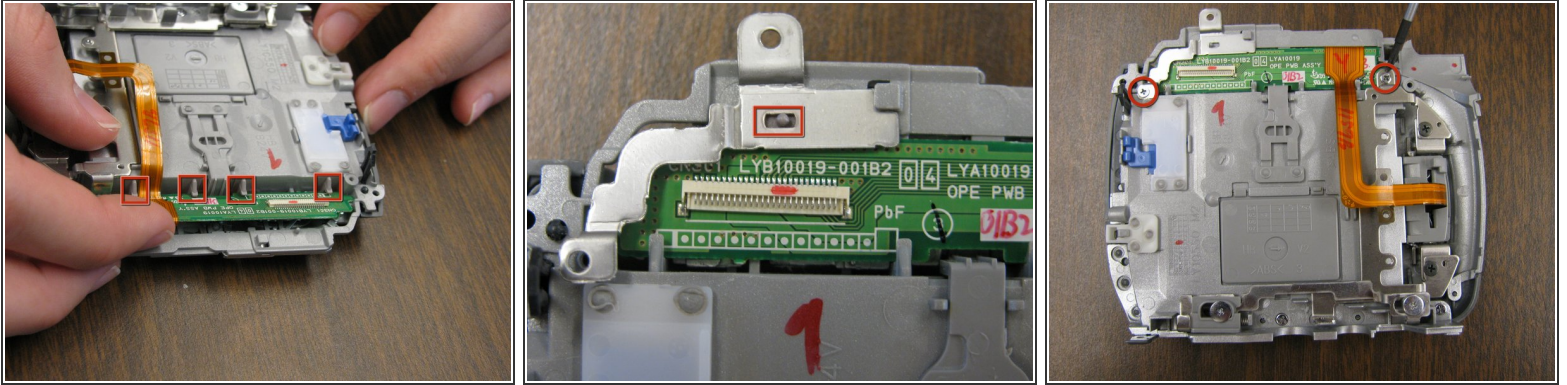
- Reinsert shortest of 3 screws on top of screen cover opposite of hinge.
- Reinsert 2 screws on hinge side of LCD screen.

Step 20



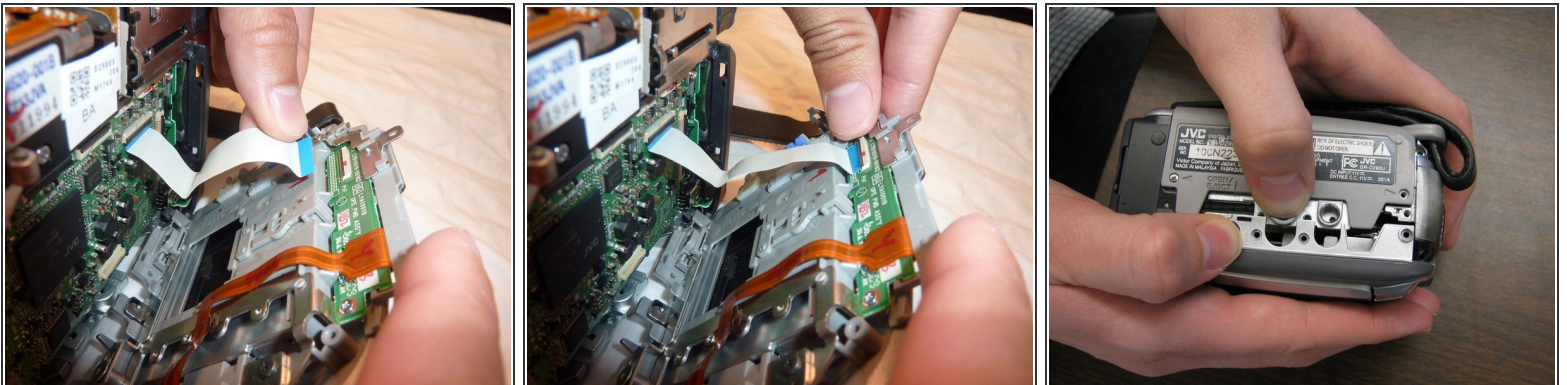
- Place loose circuit board back through empty hinge space.
- Line up LCD screen in slot on camera base and snap into place.
- Reinsert 3 screws along orange band to hold LCD screen to entire panel.

Step 21



- Reinsert circuit board in slot. Make sure to lock securely under tabs.
- Reinsert L-shaped metal piece in slot. Line up with screw hole and protruding place holder.
- Reinsert 2 screws in circuit board with the longer screw holding the L-shaped metal piece in place.

Step 22



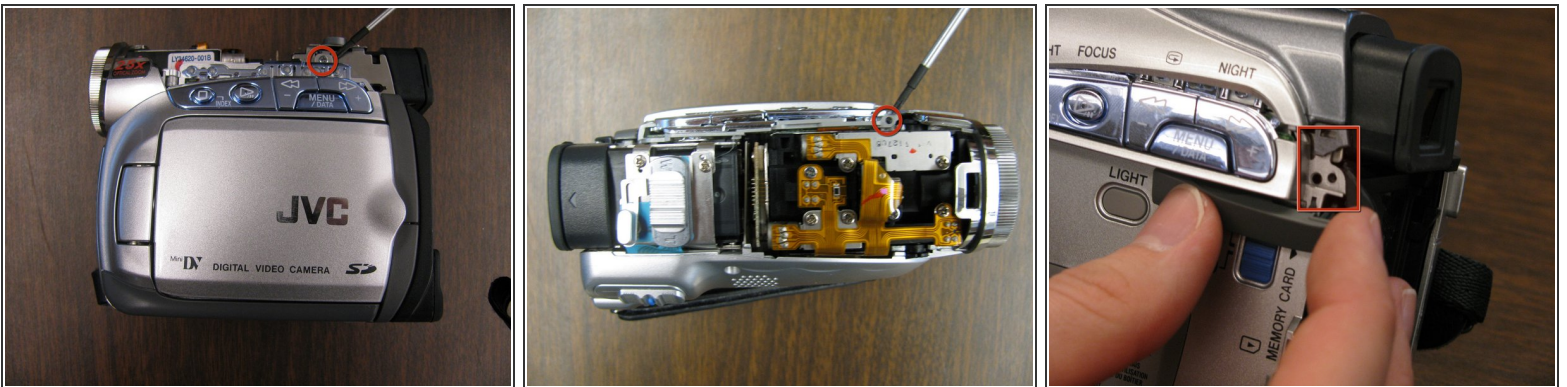
- Reattach white tab by placing under thin, black slot and snapping back into place.
- Carefully line up bottom of LCD panel and camera base and snap back into place.

Step 23



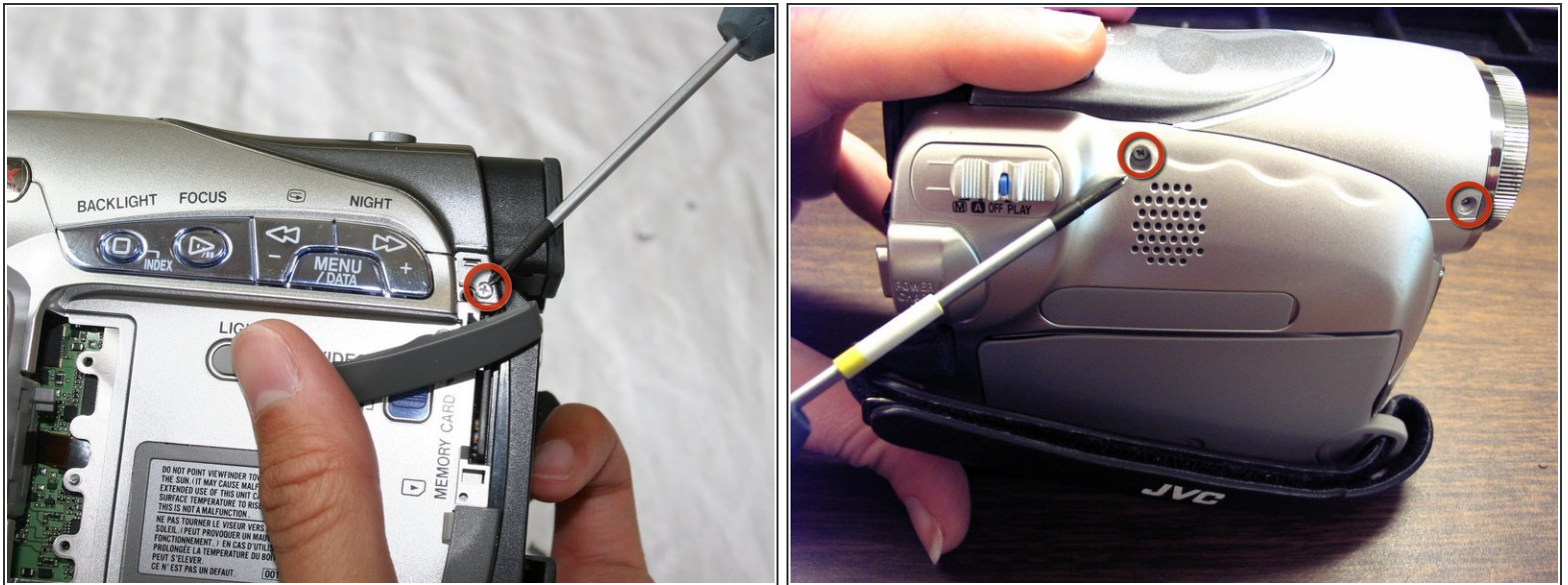
- Reinsert LCD screen hinge and 2 screws holding it in place.
- Reinsert 5 screws on bottom panel of camera. The shortest screw needs to be put into the hole with the arrow pointing to it.

Step 24



- Reinsert 2 screws under top cover of LCD side of camera.
- Move dark grey tab to ensure that top cover is not damaged.
- Line up top cover on camera base and snap it back into place.

Step 25



- Reinsert screw under dark, grey tab on the LCD side of camera and replace tab.
- Reinsert 2 screws on side opposite LCD side of camera.

Step 26



- Reinsert 2 screws connecting back plate to camera base.
- Reinsert battery.
- Turn on and test functionality.