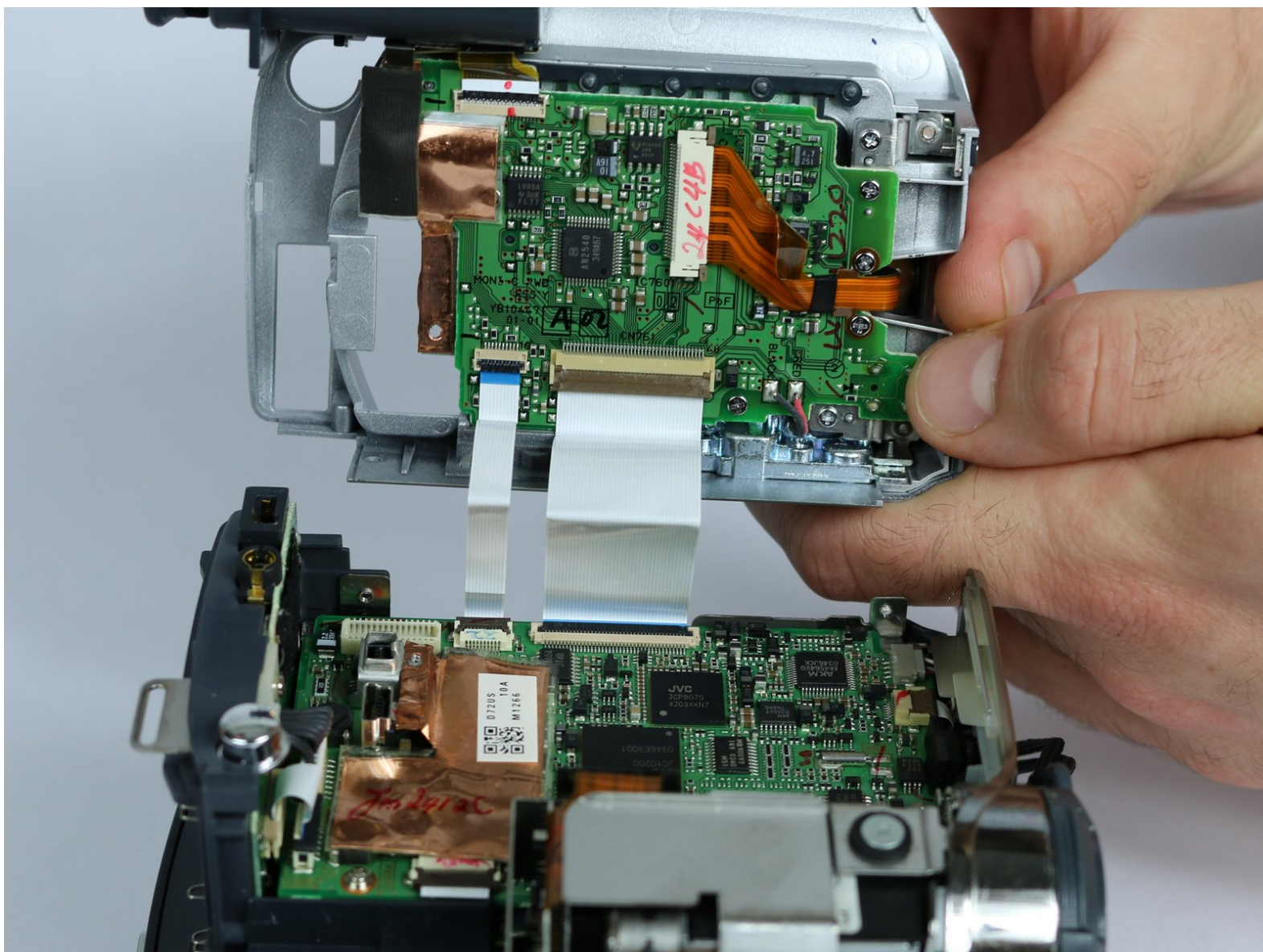




# JVC GR-D72U Lateral Function Port Panel Replacement

Replacement guide for Lateral Function Port Panel which houses the view finder, LCD screen, video control buttons, SD Card port, and cable ports.

Written By: Joshua Hatcherian



This document was generated on 2019-09-22 04:57:32 AM (MST).

## INTRODUCTION

The buttons on the panel can wear out over time causing the buttons to stick or become unresponsive. Also the camera's LCD monitor or viewfinder can get cracked if dropped. All these parts can be replaced with the lateral function port panel. To remove it you will need the Phillips #000 screwdriver, small plastic opener and small metal spudger.

This guide requires removing a lot of screws so it is important to keep track of which screw goes where. All screw heads are Phillips size #000.



### TOOLS:

- [Metal Spudger](#) (1)
  - [iFixit Opening Tools](#) (1)
  - [Phillips #000 Screwdriver](#) (1)
-

## Step 1 — Battery



- Locate button on bottom of camera.
- Slide button to the right.

## Step 2



- Pull the battery towards the bottom of the camcorder while lifting battery



### Step 3 — Lateral Function Port Panel



- Remove silver plate that says “Auto Light” on the top of the camera using a metal spudger.
- Remove the 3.1 mm screw.
- Remove the three 5.3 mm screws from the back of the camera.

### Step 4



- From the bottom of the camera remove the following four screws:
  - 5.3 mm
  - 3.1 mm
  - 5.1 mm
  - 3.5 mm

## Step 5



- Use the small plastic opening tool to remove the blue side cover piece.

## Step 6



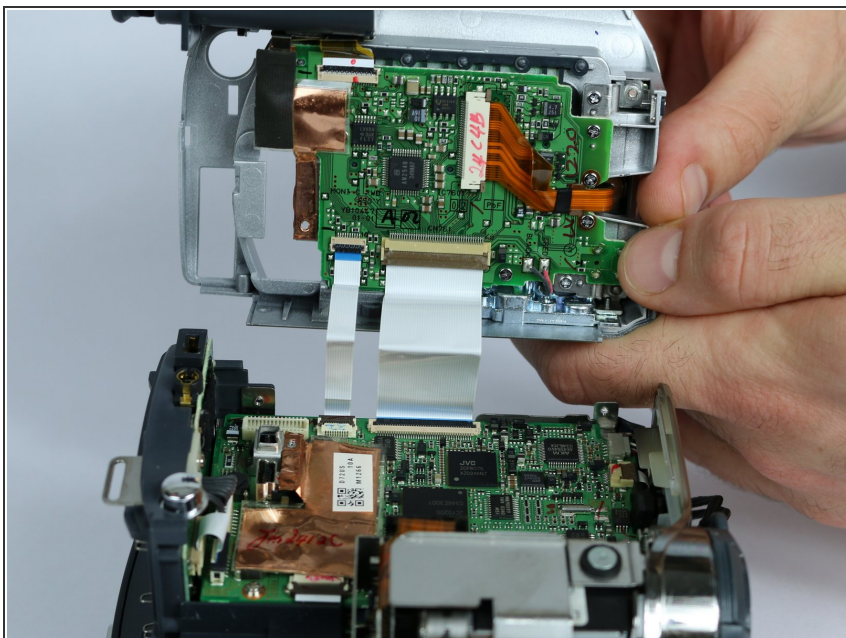
- Remove the 3.1 mm screw on top of the camera, closest to the LCD monitor.
- Remove the 5.4 mm screw next to the snapshot button.

## Step 7



- Remove the 3.1 mm screw next to the USB and DV inputs.

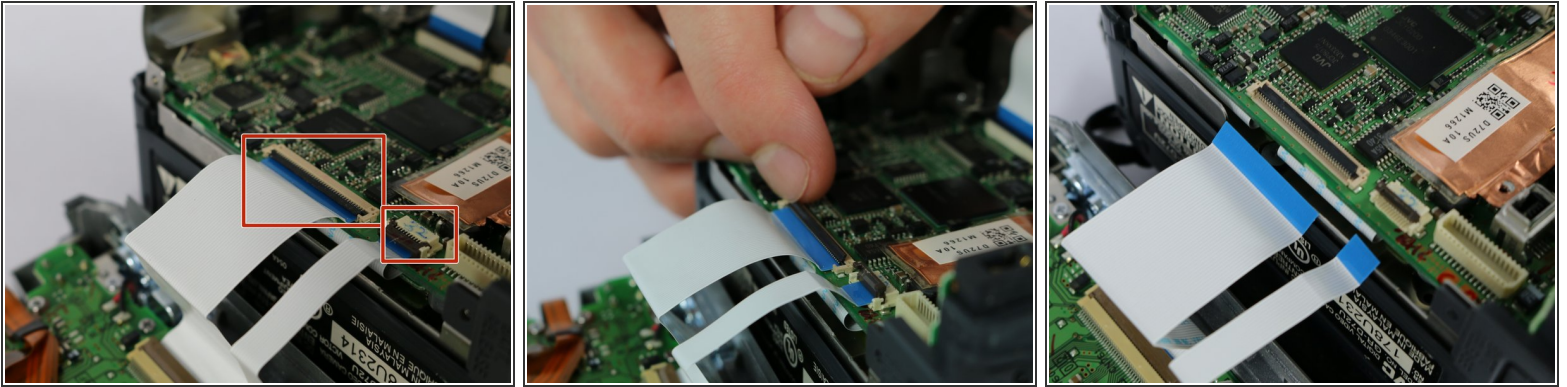
## Step 8



- Gently pull apart both halves of the camera to reveal the inner components.



## Step 9



- Flip the cable locks to the up-position and pull both cables connecting the lateral function port panel to the rest of the camera.
- Insert the cables from the new port panel into their inputs and flip the locks to the down position.
- ⓘ It is easier to use tweezers when inserting the cable but not required.

To reassemble your device, follow these instructions in reverse order.