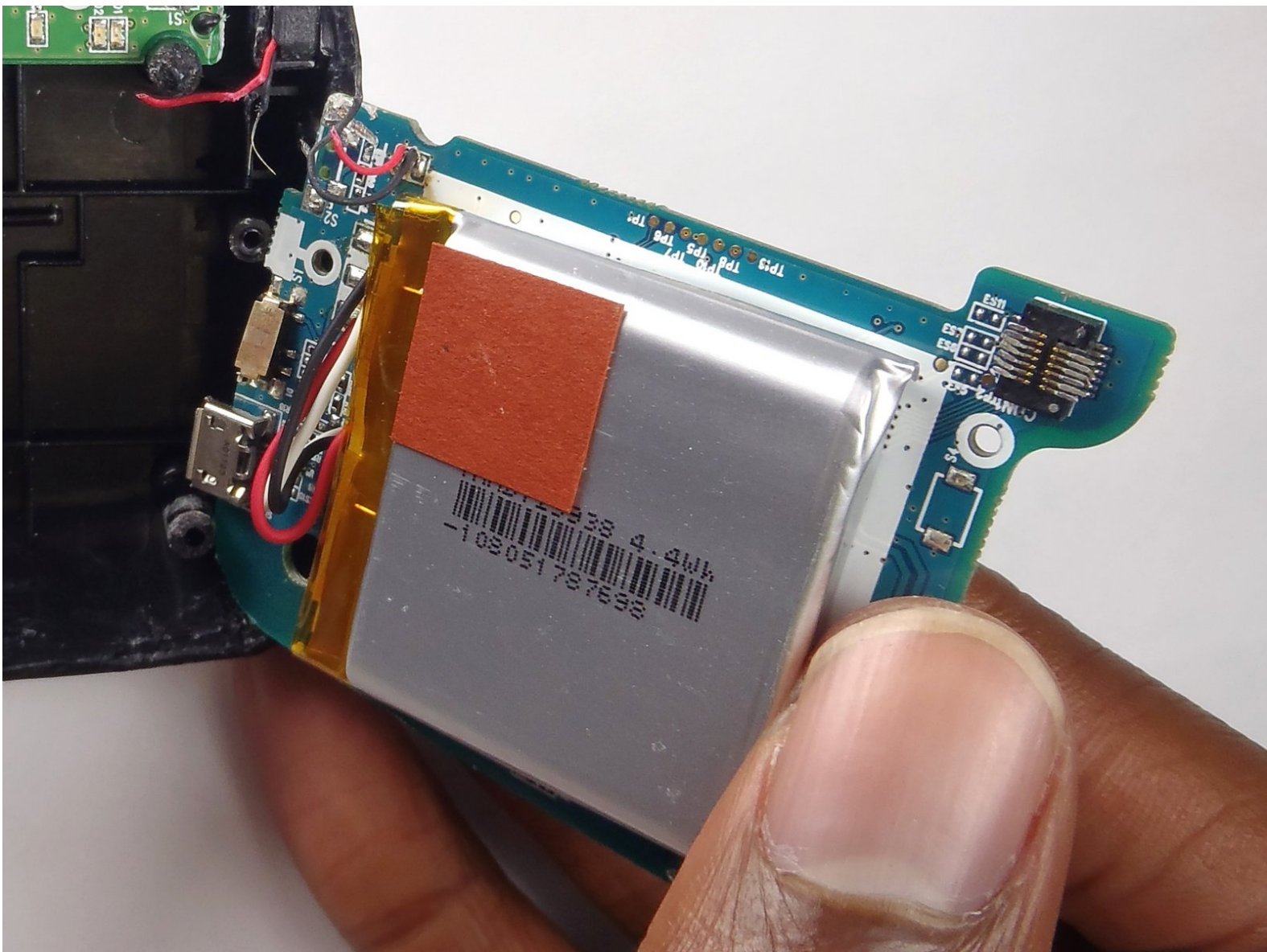




Jabra CRUISER2 Battery Replacement

Follow this guide to remove the battery from the device for replacement. Do this if the device won't turn on and the battery won't charge.

Written By: Spartacus



INTRODUCTION

If the battery is drained of life, you will need to replace it. This guide will give you step-by-step instructions on how to replace the battery.

TOOLS:

- [iOpener](#) (1)
 - [iFixit Opening Tools](#) (1)
 - [Microwave](#) (1)
 - [Phillips #000 Screwdriver](#) (1)
 - [Soldering Workstation](#) (1)
-

Step 1 — Front Plate



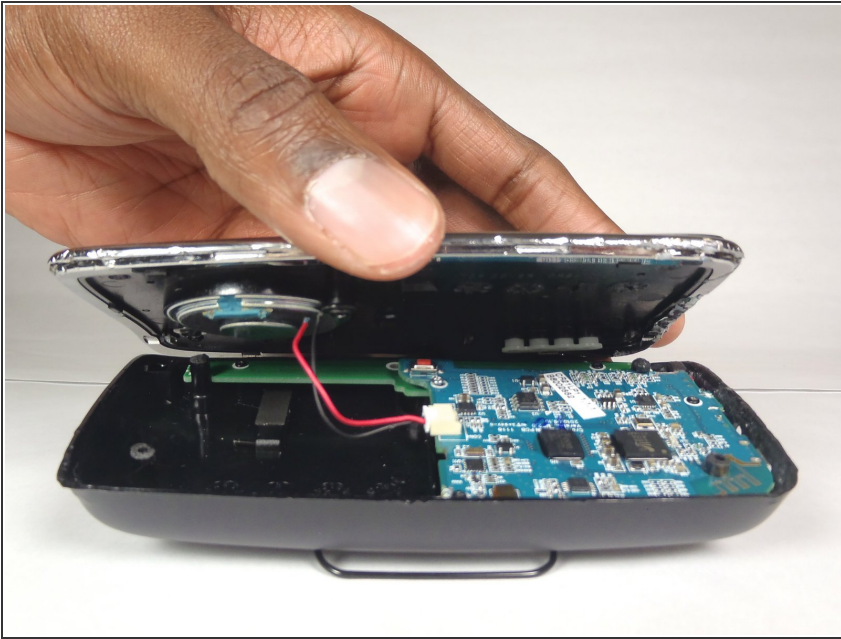
- Use the iOpener tool to unglue the adhesive of the device. The link to the iOpener instructions are listed below.
- [iOpener Instructions](#)

Step 2



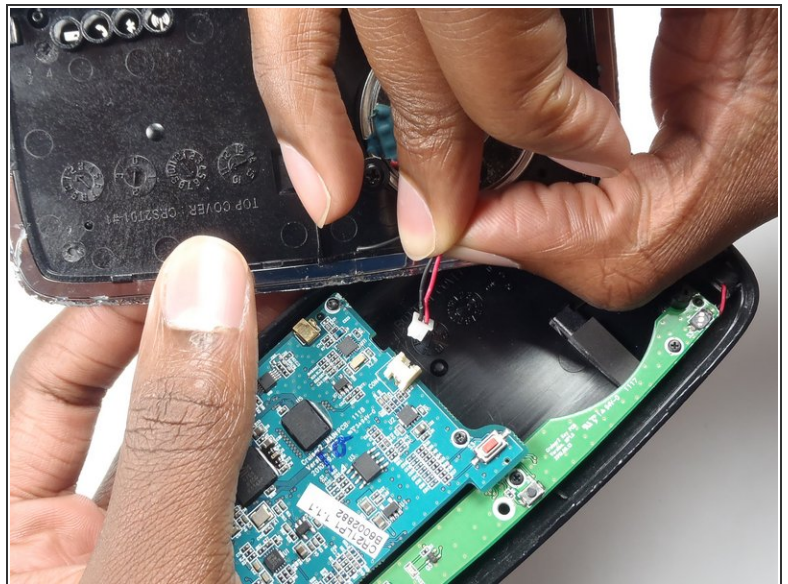
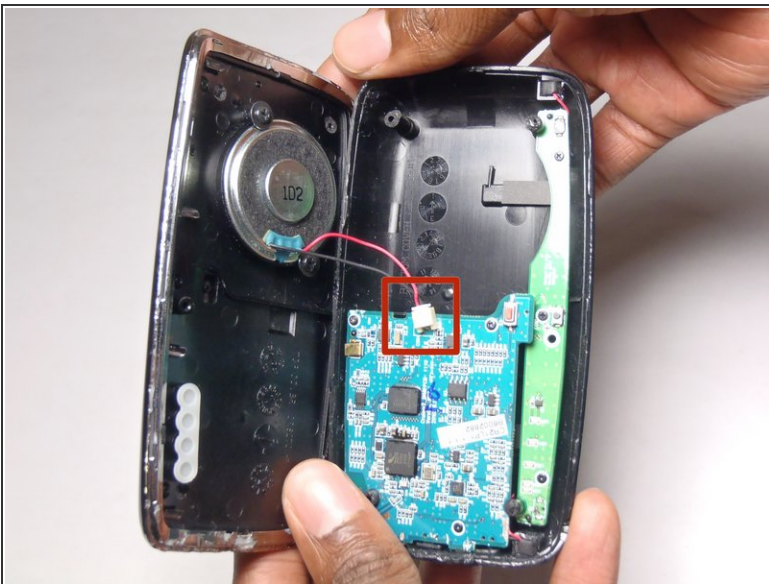
- Place the flat head of the bigger plastic opening tool in between the front plate and back plate.
- Pull the tool toward the back of the device to pry it open.
- Repeat this process over all edges of the device.

Step 3



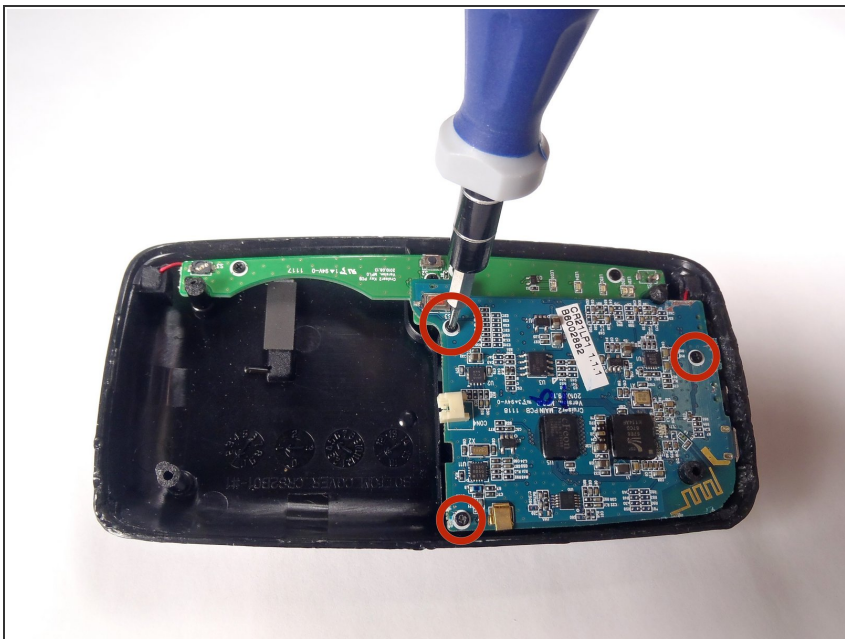
- Open up the device by pulling the front plate straight up from the back plate.

Step 4 — Motherboard



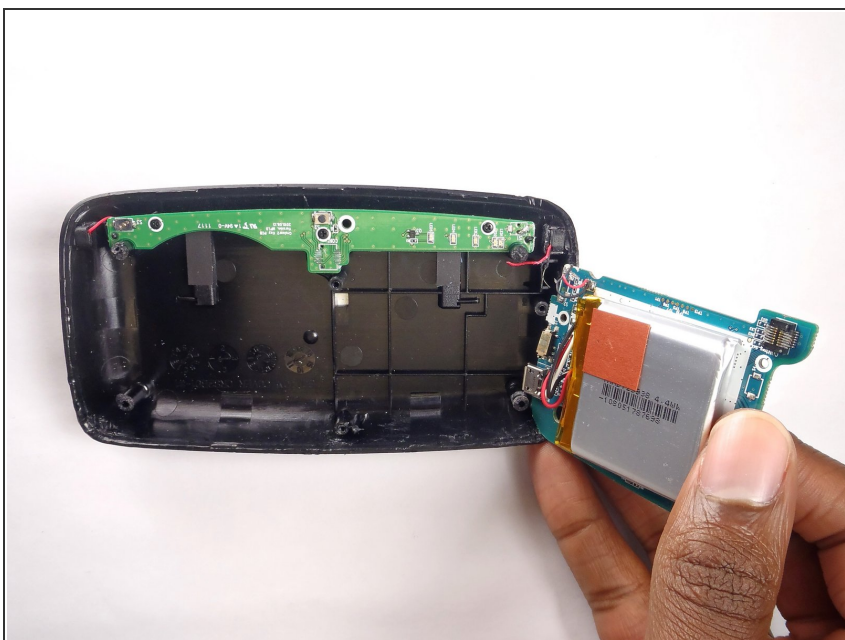
- Carefully detach the wire running from the speaker to the motherboard by unplugging it from the white socket.

Step 5



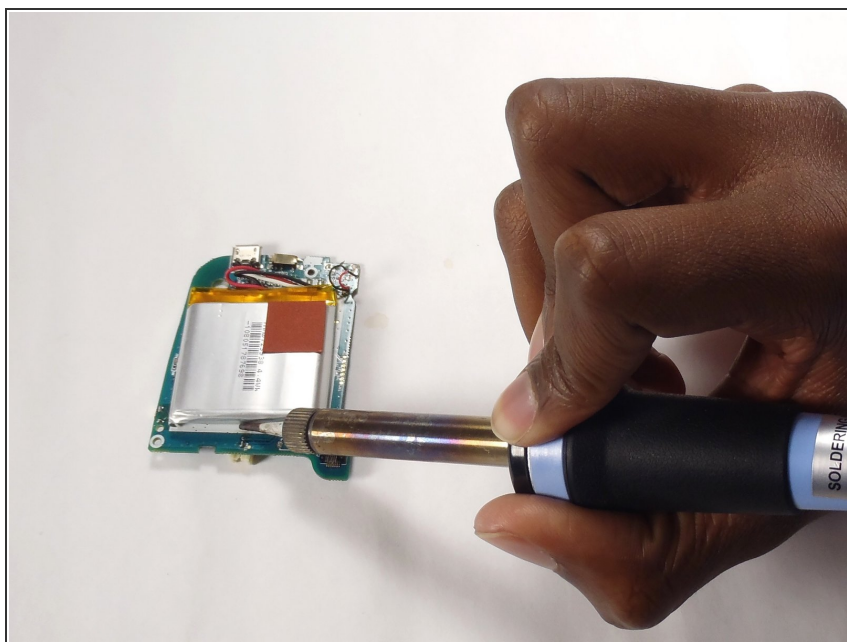
- Using the PH000, unscrew the three 4.55 mm screws in the motherboard.
- The names of the screwdriver heads are listed on the sides of each head.

Step 6



- Remove the motherboard from the device by lifting it up from the back plate.

Step 7 — Battery



- ⚠ Desolder the battery from the back of the motherboard using the heated soldering iron.
- You can find instructions to desolder the battery here. [How To Solder and Desolder Connections](#).

To reassemble your device, follow these instructions in reverse order.