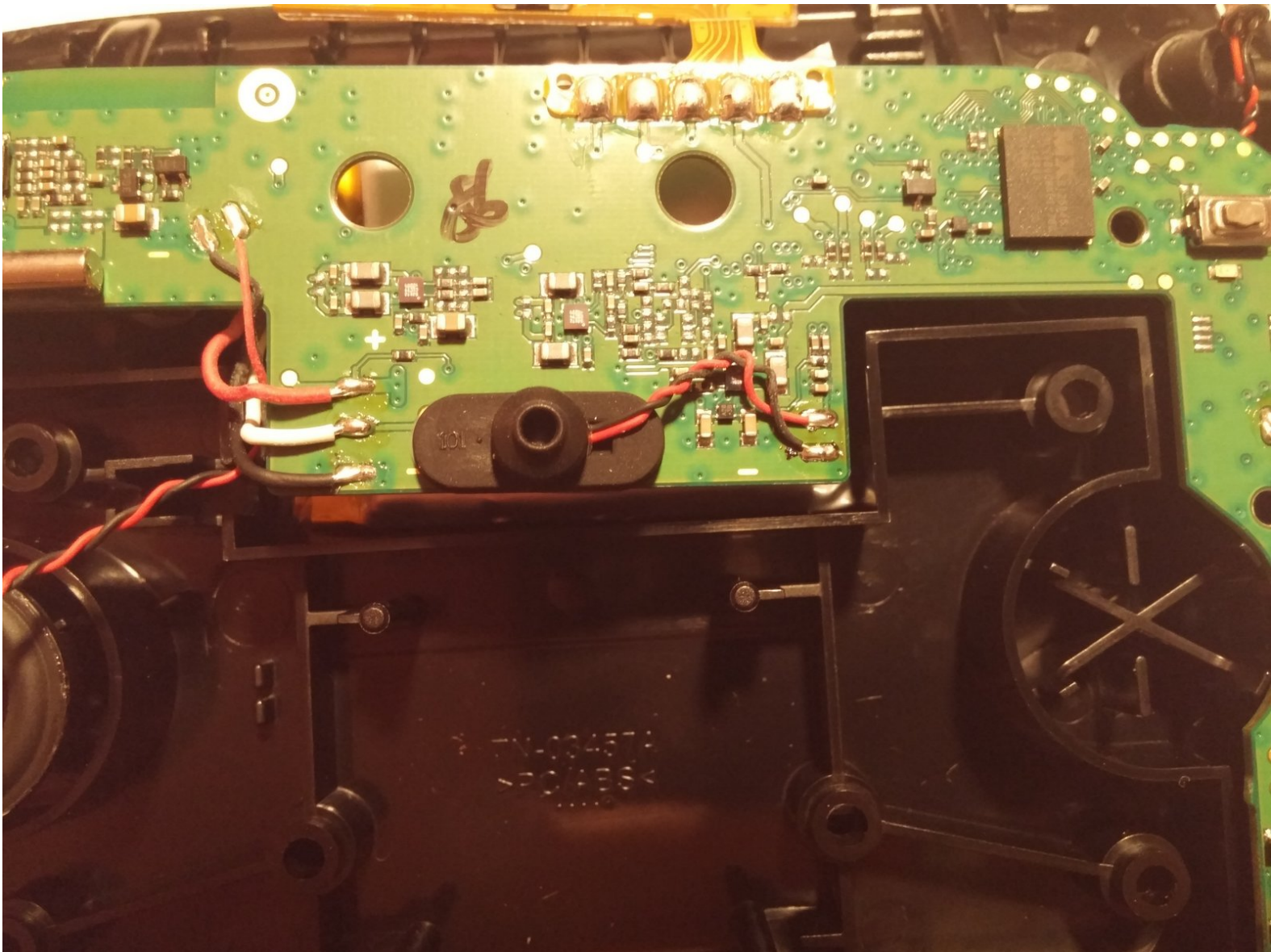




# Jabra Freeway Motion Detector Replacement

In this guide we will be replacing the motion detector in the Jabra Freeway.

Written By: Alec Wilson



---

## INTRODUCTION

The Jabra Freeway's auto-on and auto-off features are controlled by the motion detector. In this guide, we will be replacing this detector.

---




### TOOLS:

- [Spudger](#) (1)
  - [T9 Torx Screwdriver](#) (1)
  - [iFixit Opening Tools](#) (1)
  - [Soldering Iron](#) (1)
-

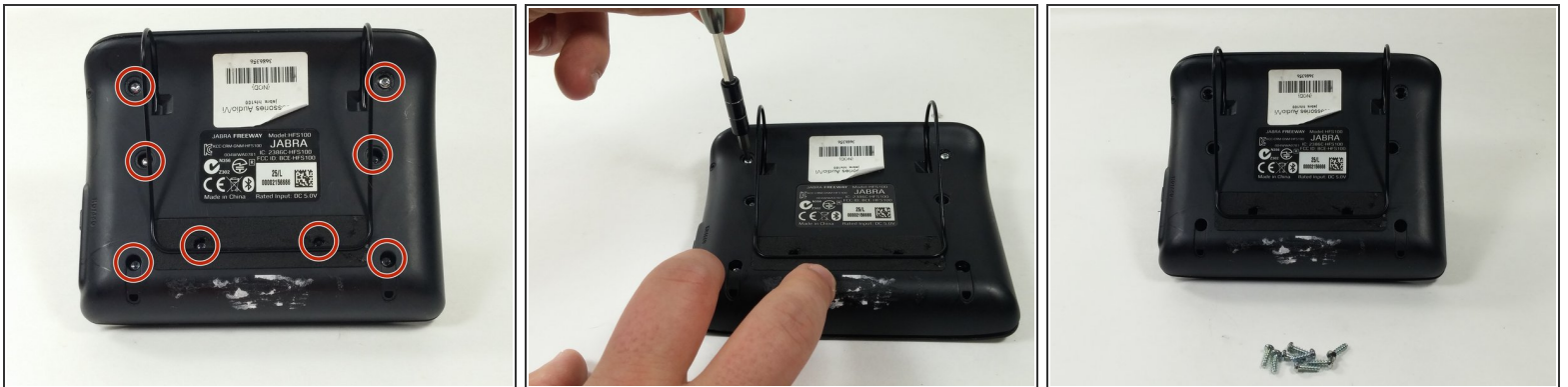
## Step 1 — Front Panel




 Turn off the device before proceeding. Failure to do so may result in device damage or injury to oneself.

- Remove the rubber pads from the bottom of the device using the spudger.

## Step 2



- Remove the eight 6mm T9 screws.
-  Two of these screws are underneath the foam padding. This padding is glued on and will be destroyed in this process. Poking through the foam minimizes the damage to the device.

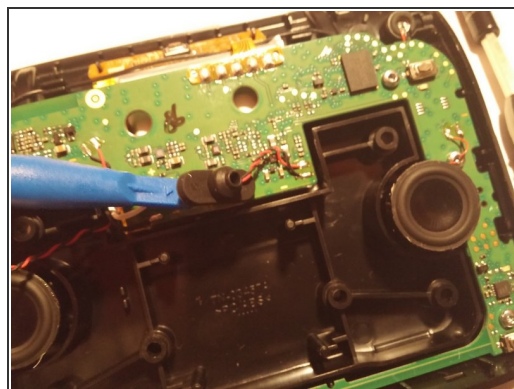
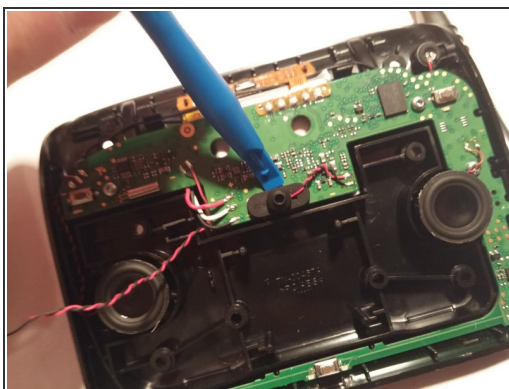
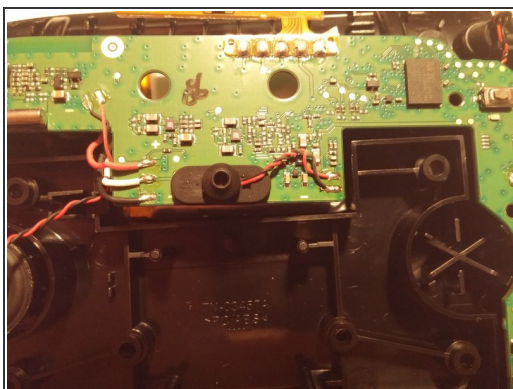


## Step 3



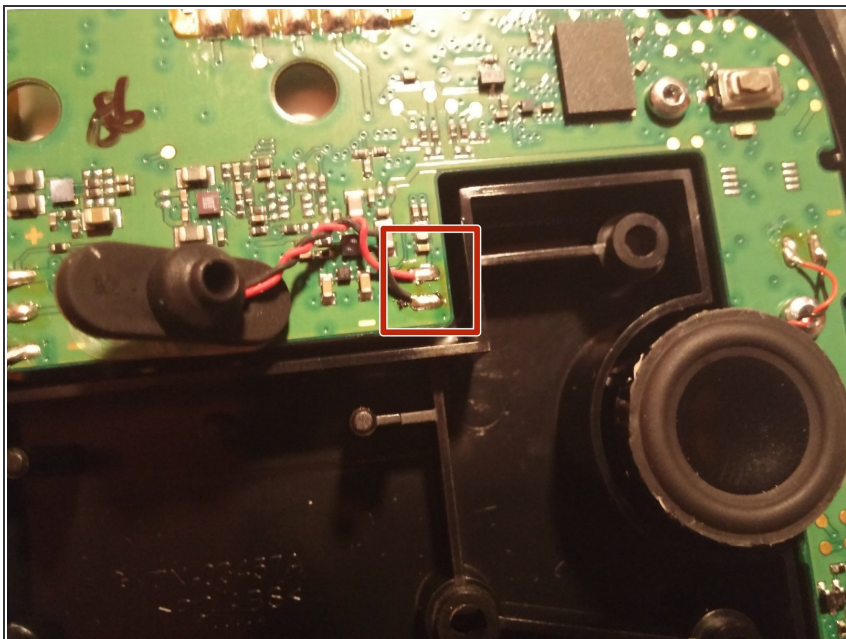
- Gently lift the front panel off of the device and carefully rest it to the side.

## Step 4 — Motion Detector



- Use the plastic opening tool to lift the motion detector off the circuit board.
- ⓘ The motion detector is glued in place, so a moderate amount of force is required.

## Step 5



- Desolder the two wires connecting the motion detector to the circuit board.
- Please refer to the [soldering technique guide](#) for instructions on desoldering and soldering.

To reassemble your device, follow these instructions in reverse order.