



Jabra Solemate Disassembly / Repair

Disassembly the Jabra Solemate Bluetooth Speaker for a hard reset by disconnecting (soldering) the rechargeable battery pack. FCC ID: BCE-HFS200

Written By: Felix Cies.



INTRODUCTION

My Solemate did not react to anything. On/Off, USB Cable plug in - there was no active LED or any other sign of life.

After a complete disassembly and a deep look inside for broken solderings or something else i unsolderd the +(red) cable from the rechargeable battery pack.

After soldering it back - the device was fine again.



TOOLS:

- [T6 Torx Screwdriver](#) (1)
 - [T8 Torx Screwdriver](#) (1)
-

Step 1 — The bottom parts



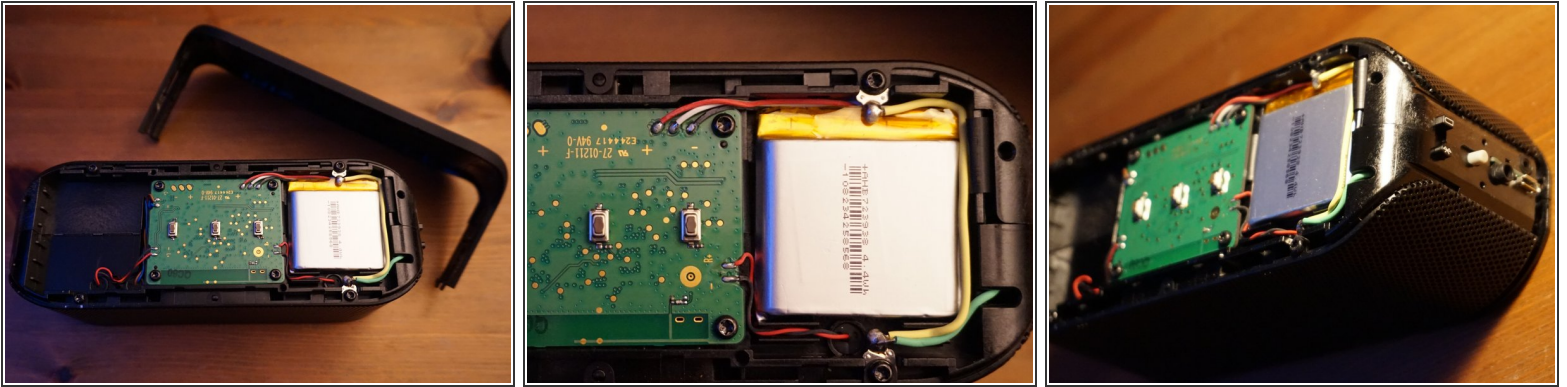
- First we have to pull of the bottom rubber profile. You can easy lift it by using your fingers.
- under the rubber are allocated two Torx 6 Screws which hold the strap in place. Loosen them to remove the strap.

Step 2 — Removing the upper cover



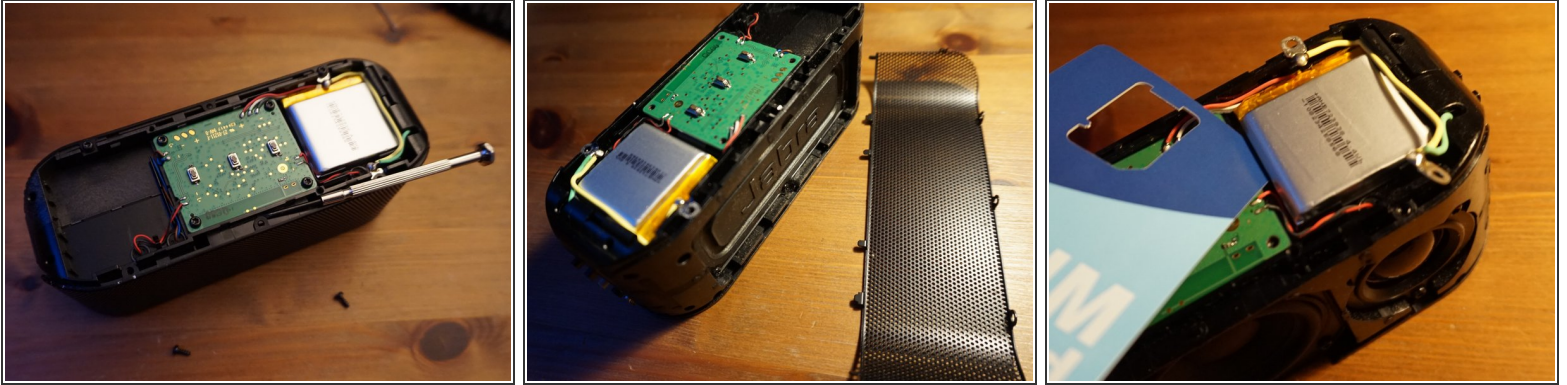
- At the side of the removed strap the cover is fixed with an adhesive tape. Gently bend the plastic that the adhesive tape will loose.
- at the upper side you have to loosen 2x3 plastic snaps. At the other side, where the button and usb port is allocated, a second adhesive tape holds the upper case.

Step 3 — Control PCB and Battery



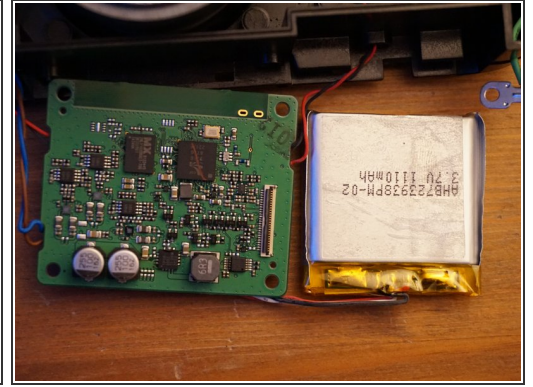
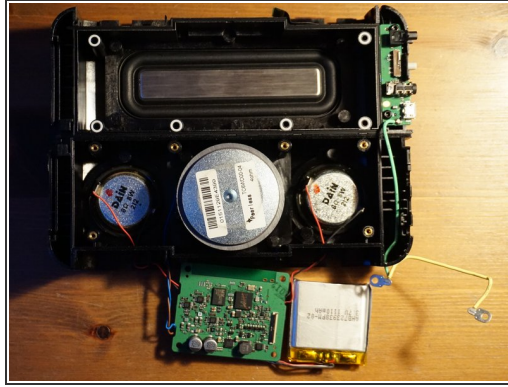
- Now you can see the Main PCB and the Battery.
- **Here i could fix my problem** of the not reacting device. I unsolderd the thicker red cable of the battery for a few seconds and soldered it back. that caused a hard reset. If this was your problem too, you can mount everything back.

Step 4 — Disassemble the grille



- For removing the two grilles you have to loosen the four (2x2) black screws with a Torx 8 screwdriver at the top of the grilles. You have to pay attention to the two snaps in the middle of each grille.
- Loosen the **Main PCB** by removing the four black screw of the PCB.
- **Battery** - Gently lift the battery with a dull plastic part. The battery is put in place with an adhesive foil under it. Pay attention to not harm the battery or the cable routes under it.
- **Flat-Cable** - the Flat Cable under the Battery is also hold in place with an adhesive tape and snap in at the bottom side of the PCB. Pay attention by lifting the PCB.

Step 5 — Disassemble the hole Housing



- On the side of the "sub-woofer" you have to loosen 6 small screws with a Torx 6 screwdriver.
- Now you can pull apart the two half sides of the housing. Surprise: The "Sub-woofer" is not active. It uses the volume movement of the other speakers. That's why the half sides are very well sealed to each other.

To reassemble your device, follow these instructions in reverse order.