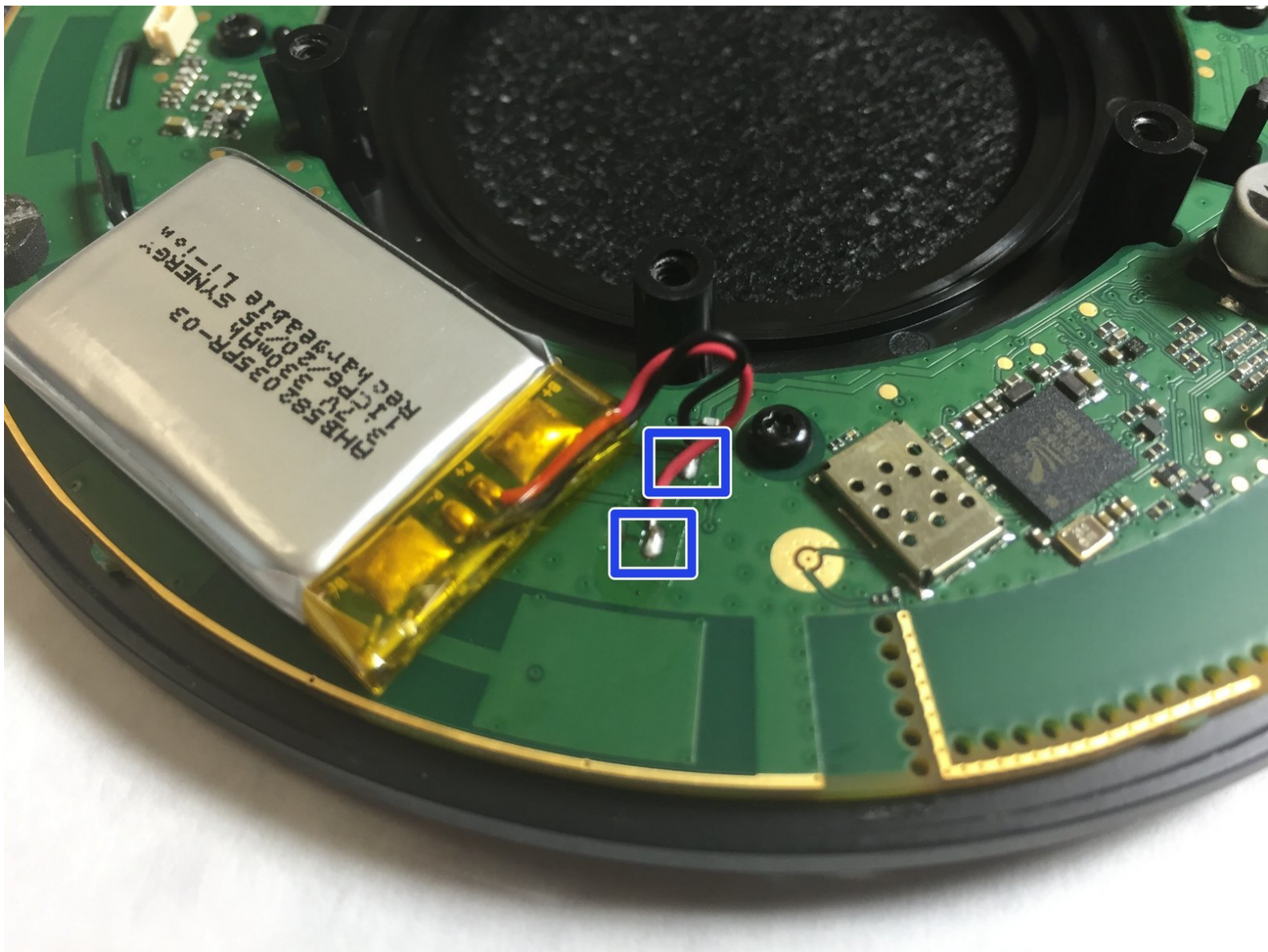




Jabra Speak 510 Battery Replacement

Battery replacement for the Jabra Speak 510 speakerphone. Soldering of the battery terminals is required.

Written By: Edgar Tavares



INTRODUCTION

You will need to research online for replacement batteries of the same dimensions, 3.7 volts, 330mAh (or greater) and with wire leads. The replacement consists of desoldering the old batteries and soldering the new ones to the motherboard. This replacement guide will give you the confidence to do it yourself.



TOOLS:

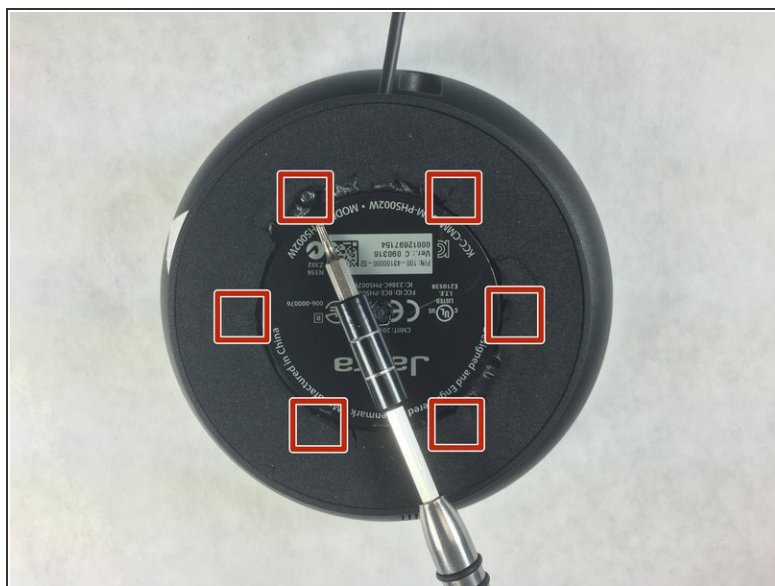
- [Soldering Iron](#) (1)
- [T6 Torx Screwdriver](#) (1)
- [Metal Spudger Set](#) (1)
- [Spudger](#) (1)



PARTS:

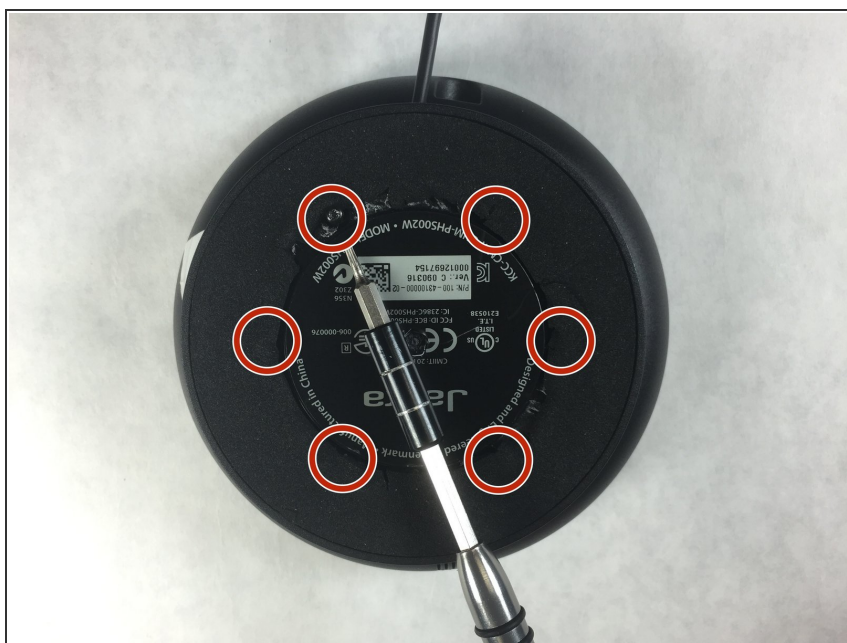
- [3.7V 330mAh Li-Ion battery](#) (1)

Step 1 — Outer Casing



- Using a metal spudger, peel back the foam pad on the bottom of the device to reveal six screws.

Step 2



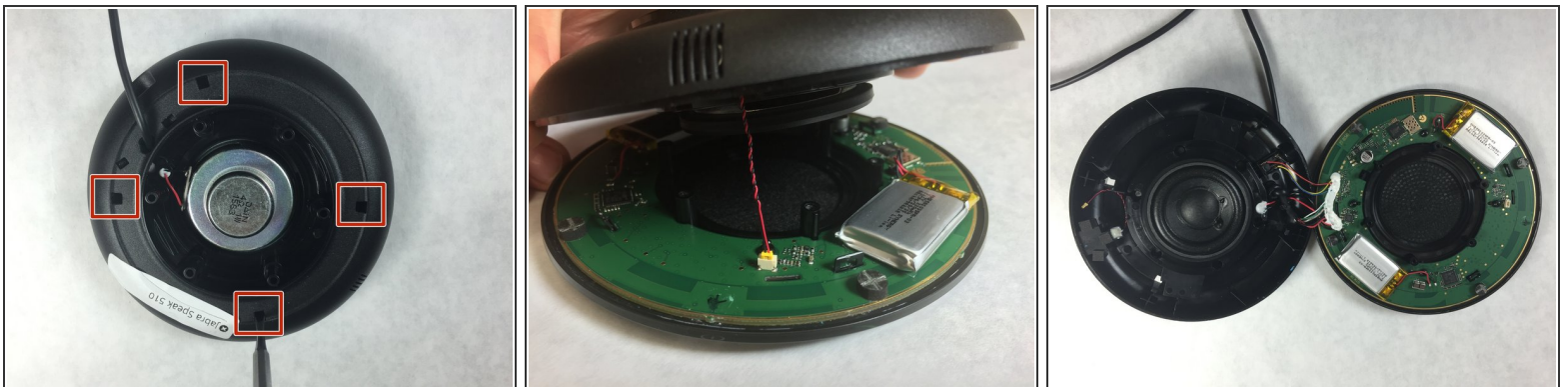
- Remove the six 20 mm T6 screws from the bottom of the device.

Step 3



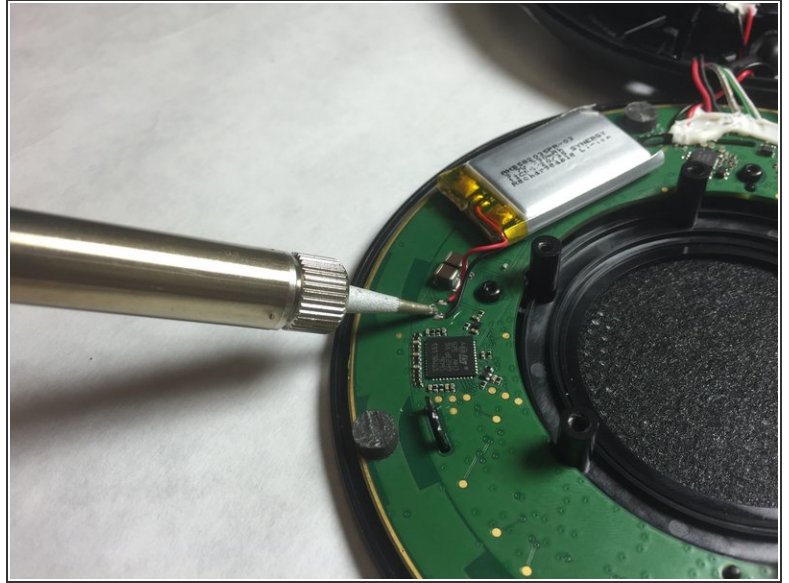
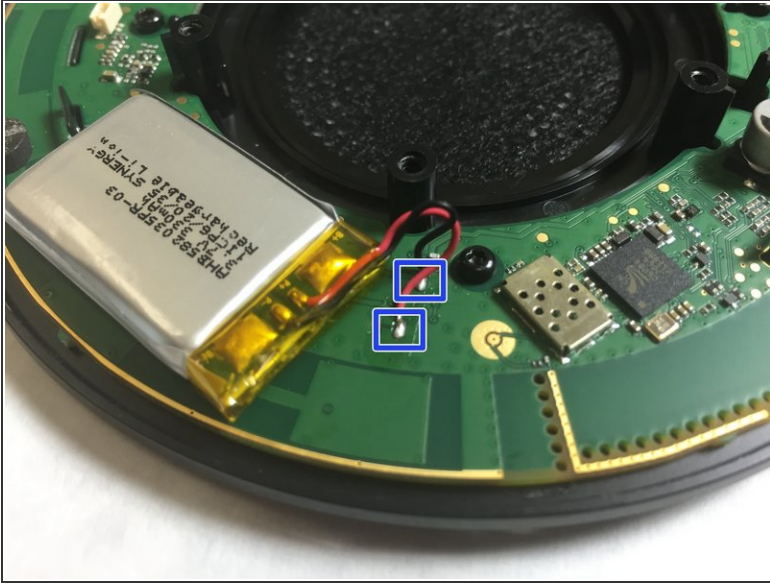
- Remove the back plate and the grey foam underneath.

Step 4



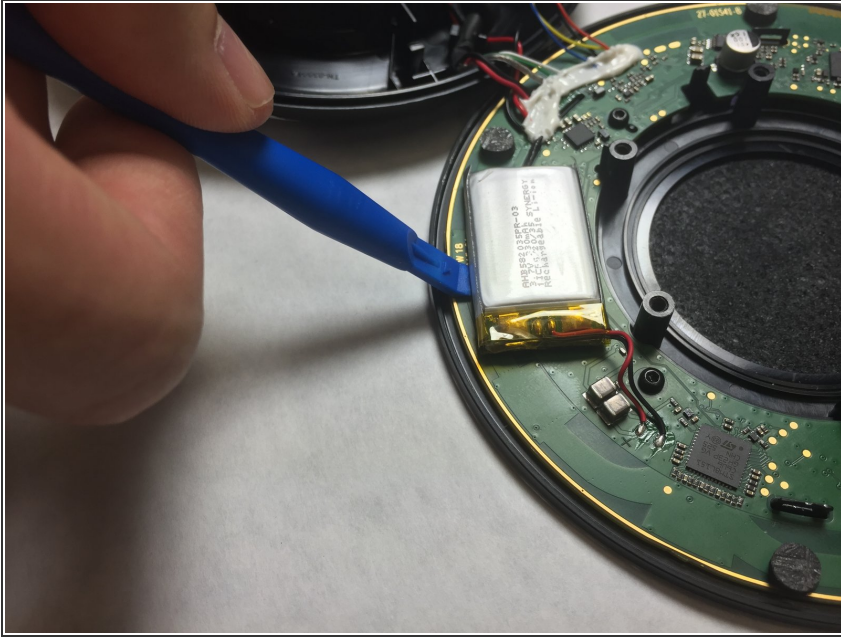
- Use a small, pointed metal spudger to release the plastic tabs connecting the faceplate to the bottom of the speaker.
- ⚠ A small cable connects the faceplate to the device. Carefully disconnect the cable before fully opening the device.
- Slowly flip the device open like a clam shell.
 - ⓘ There are several wires soldered to the motherboard that prevent the faceplate from detaching completely.

Step 5 — Battery



- Once you have carefully separated the bottom case from the top case, locate the two batteries attached to the motherboard.
- ✦ Notice that each battery has two wires, one red and the other black, soldered to the board. Make a careful note of which is soldered to which pad.
- Desolder the battery connections using the heated soldering iron.
- ℹ You can find soldering tips in the [How To Solder and Desolder Connections](#) guide.

Step 6



- ❗ The battery is glued to the motherboard. Take care not to damage it in any way with excessive force in removing it.
- Carefully pry the battery away from the motherboard using a plastic opening tool. The glue gives very slowly under constant pressure and cannot be hurried. As the battery starts to lift you can insert the prying tool further as you continue to lift the battery.
- The adhesive may still have sufficient stickiness to hold the new batteries, but if not, replace it with double sided tape.
- Solder the wires of the new batteries to the board, making sure that the red and black do to the correct pads.

To reassemble your device, follow these instructions in reverse order.