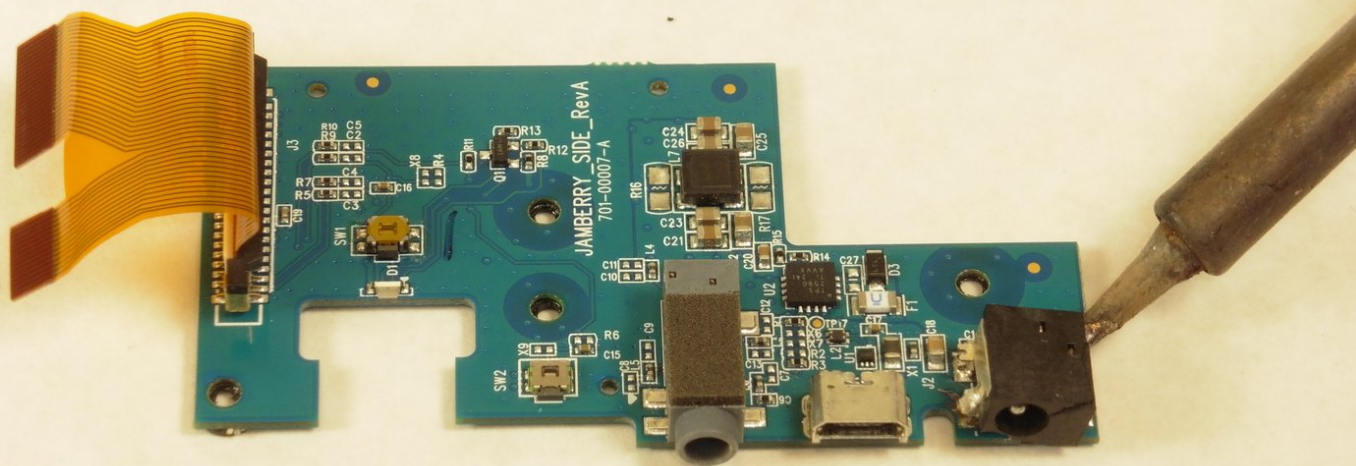




# Jawbone Big Jambox Auxiliary Board Replacement

If you are having trouble connecting your Jambox via the auxiliary to a device, then this guide will walk you through to replace the auxiliary board.

Written By: Daniel Leon-Gijon

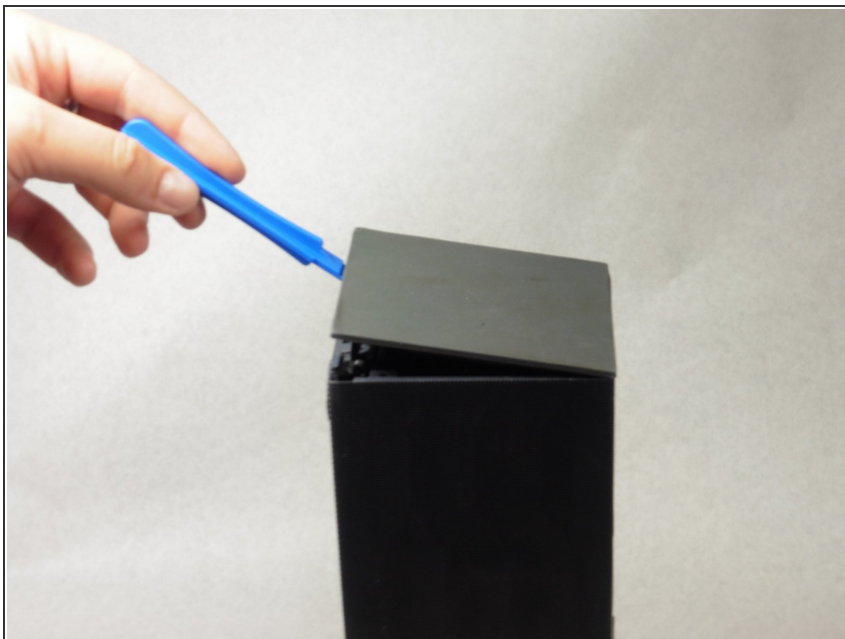




## TOOLS:

- [iFixit Opening Tools](#) (1)
  - [T6 Torx Screwdriver](#) (1)
-

## Step 1 — Auxiliary Board



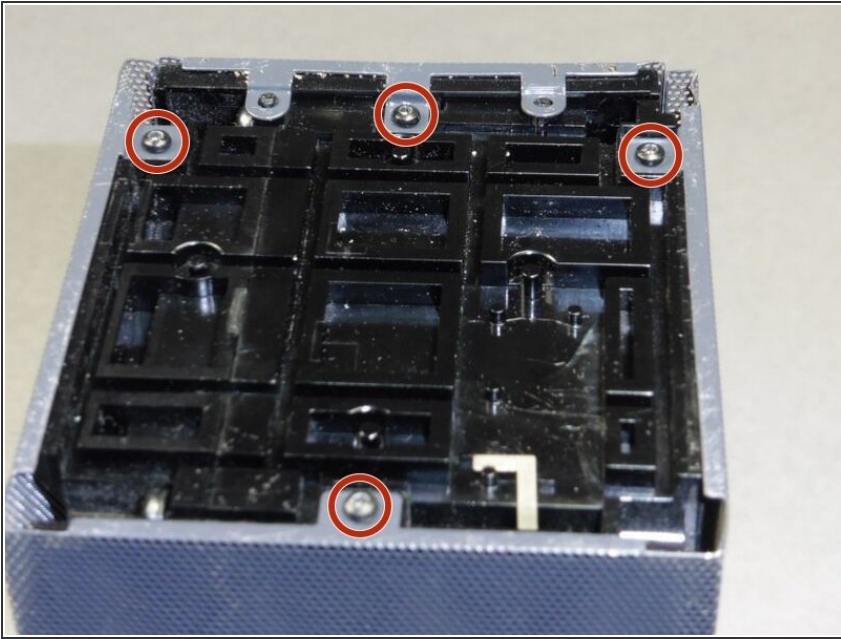
- Remove both end caps by putting a plastic opening tool in the center of the seam. Work around the edges to pry the end caps off completely.

## Step 2



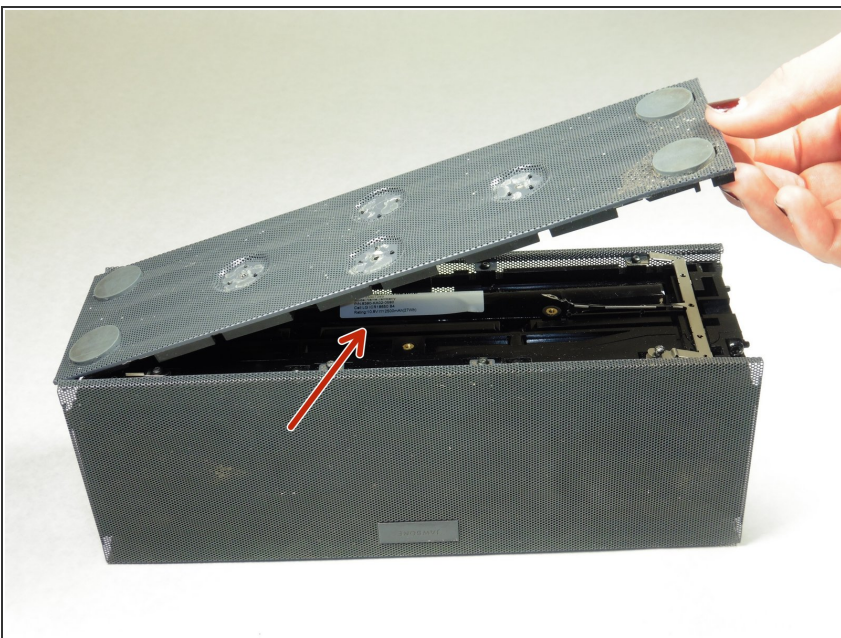
- Peel the indicated rubber tabs off, at the bottom of the speaker, using a plastic opening tool if necessary.
- Unscrew indicated T6 9.7 mm screws.

### Step 3



- Place the Jambox with the left end cap facing upward. There's 4 screws need to take off.
- Unscrew indicated T6 9.7 mm screws.

### Step 4



- With the side cap removed, pry open the bottom panel by letting up.
- Pull the bottom up. This may take a bit of force as the bottom is glued to device.
- Once removed, the battery is now visible.

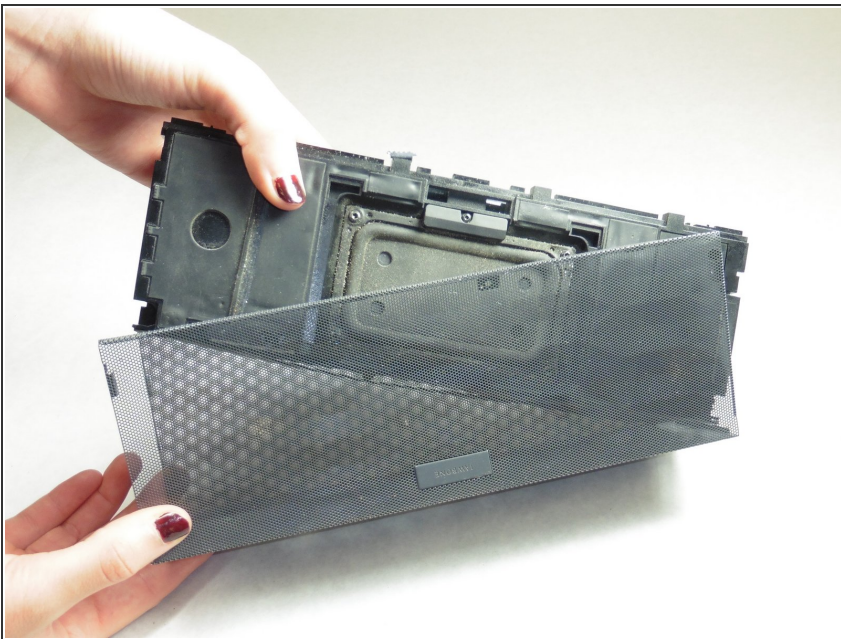


## Step 5



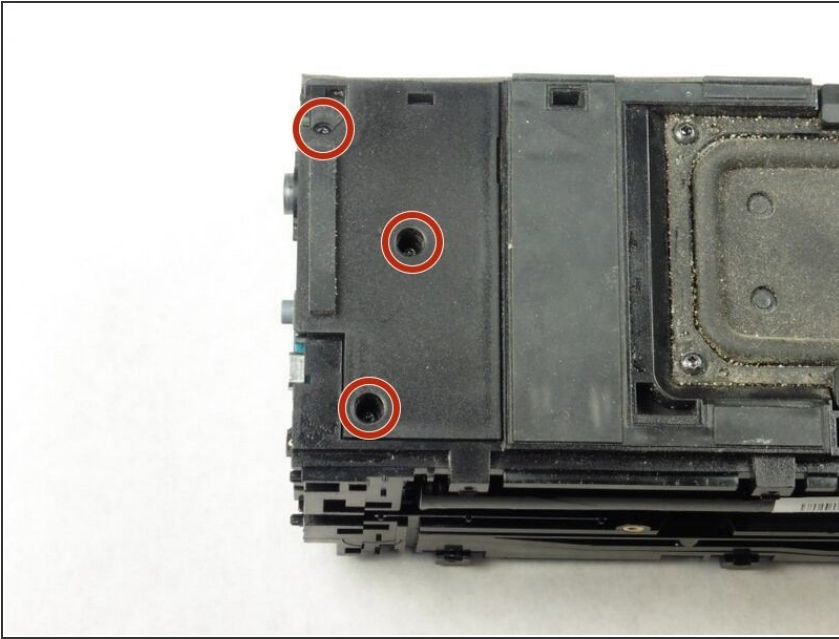
- **i** Before unscrewing, take a picture of the top view. That way, when you're reassembling the device, you'll know the orientation of the metal grounding plates.
- Unscrew the eight indicated T6 9.8 mm screws. Remove metal grounding plates.

## Step 6



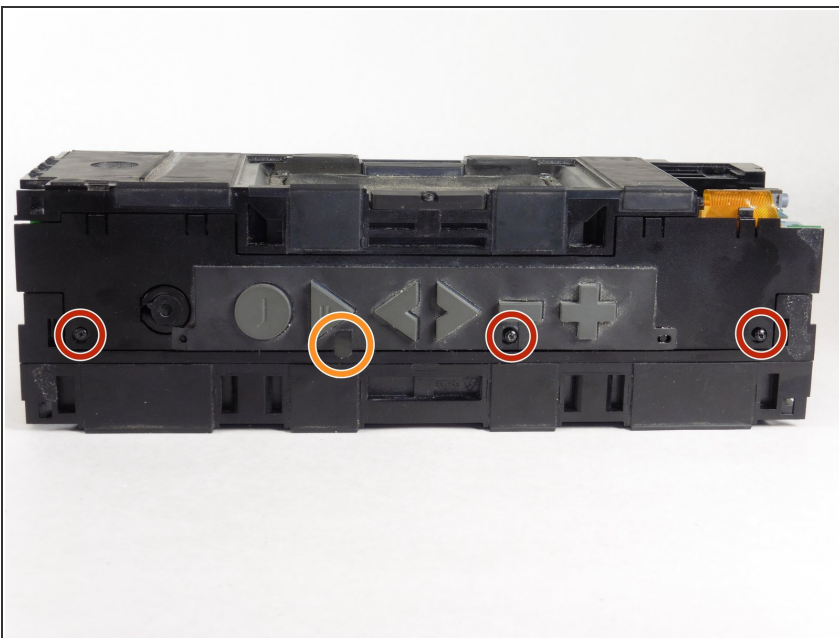
- Once all eight screws are removed, pry the sides of the Jambox to lift the body from it's shell.

## Step 7



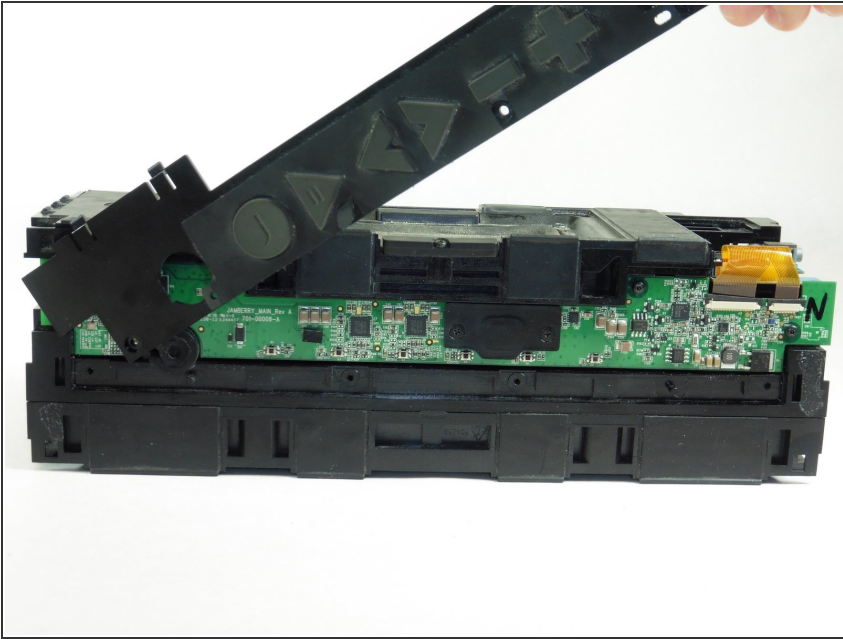
- With the battery facing forward, remove the three indicated T6 9.5 mm screws.
- Once the screws are removed, lift up the small plastic plate, revealing the auxiliary board underneath.

## Step 8



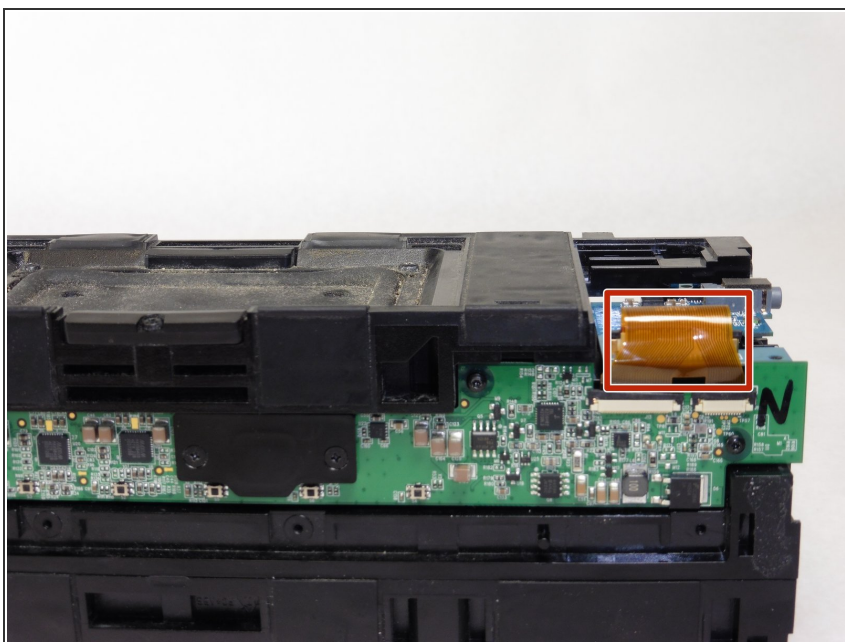
- Turn the Jambox so that the button panel is visible.
- Remove the indicated screws, T6 9.6 mm.

## Step 9



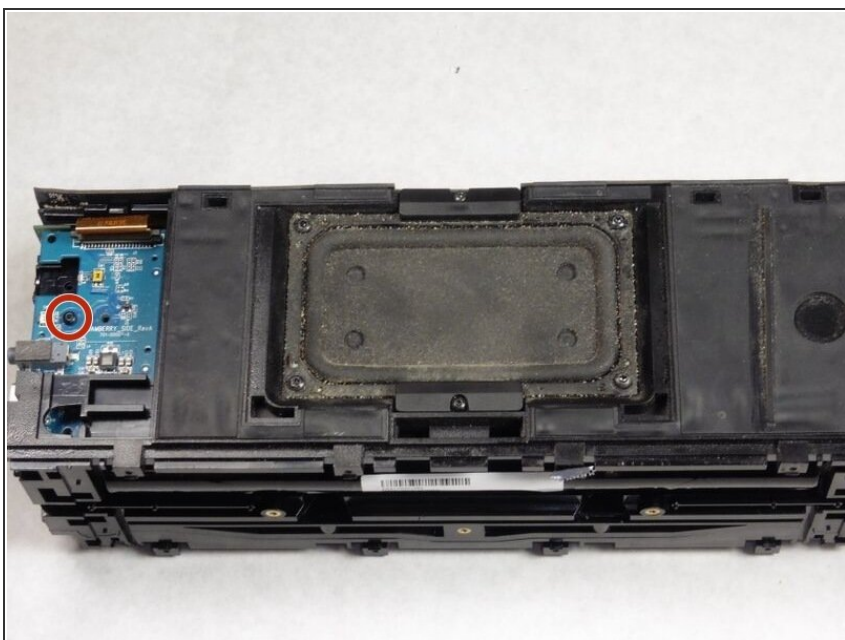
- Remove the button panel.

## Step 10



- Remove the colored ribbon that connects the green button circuit board to the blue auxiliary board by using your finger to lift the small black tabs that clamp down the ribbon.

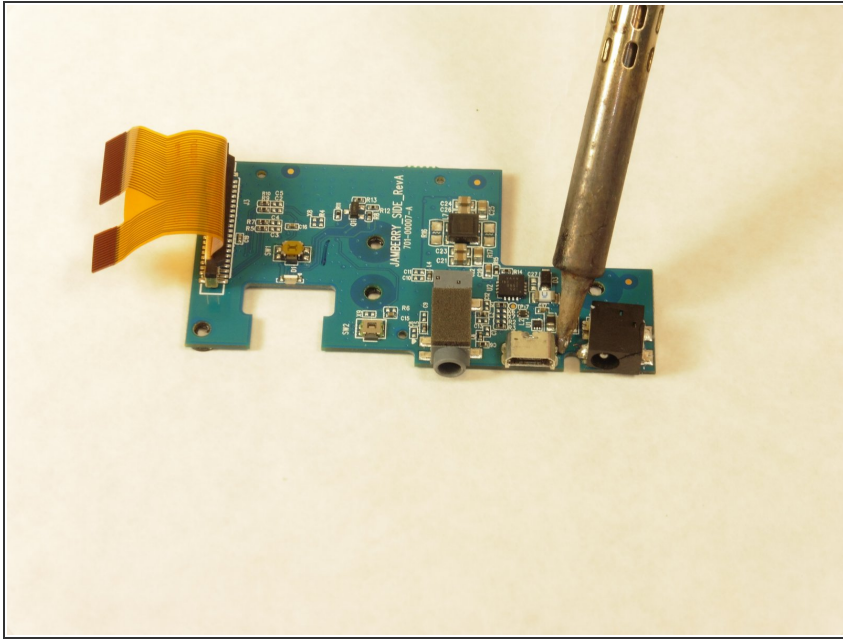
## Step 11



- Remove the indicated T6 7.4 mm screw holding the auxiliary board in place.



## Step 12



- Remove the auxiliary board and replace.
- ⓘ Repeat steps in reverse order to assemble.

To reassemble your device, follow these instructions in reverse order.

Pictures were referenced from previous guides.