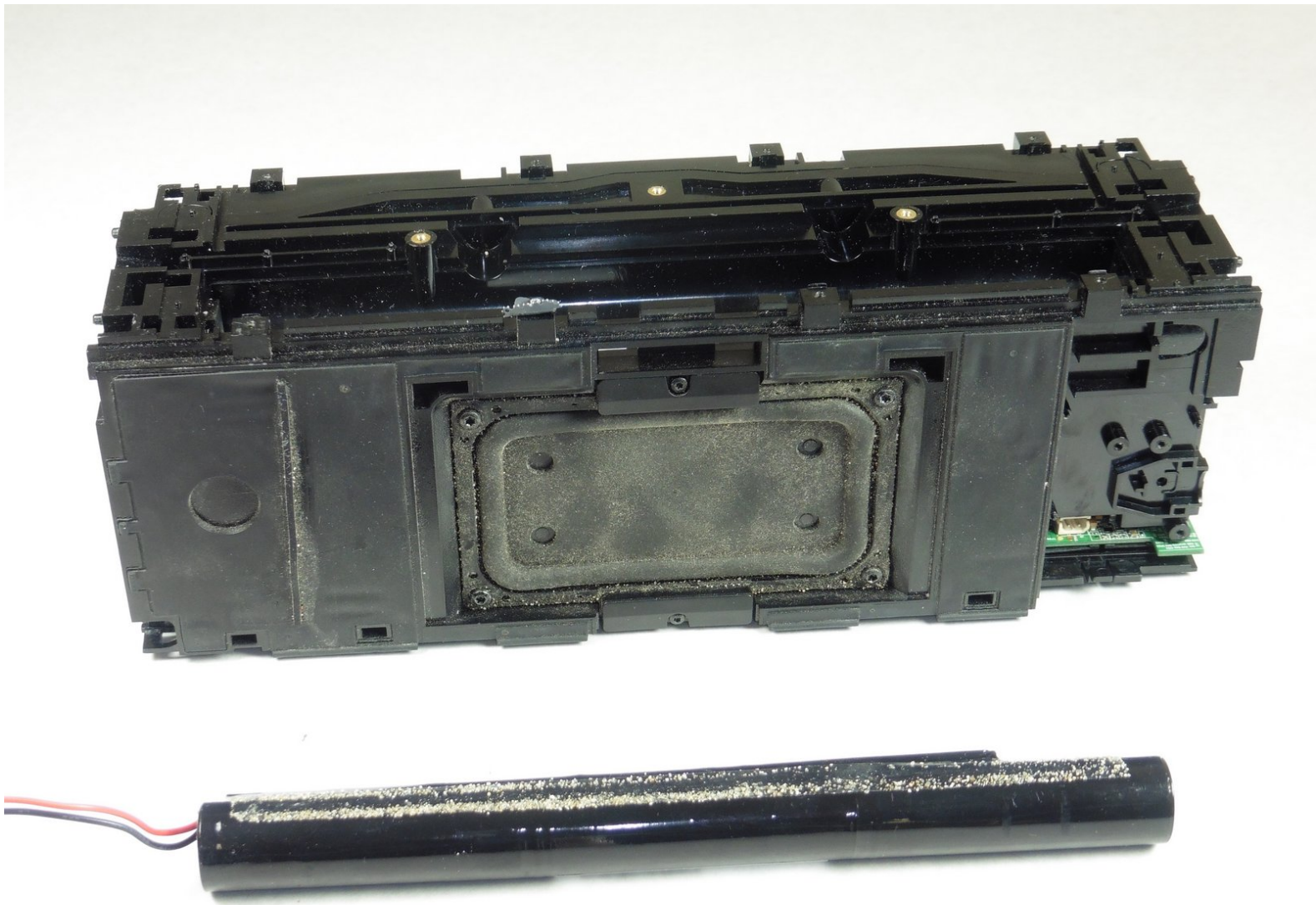




# Jawbone Big Jambox Battery Replacement

How to remove and replace Big Jambox battery.

Written By: Abby Cybula



## INTRODUCTION

This guide outlines the steps to remove and replace the battery in Big Jambox. Guide includes gaining access to the auxiliary board to unplug battery.



### TOOLS:

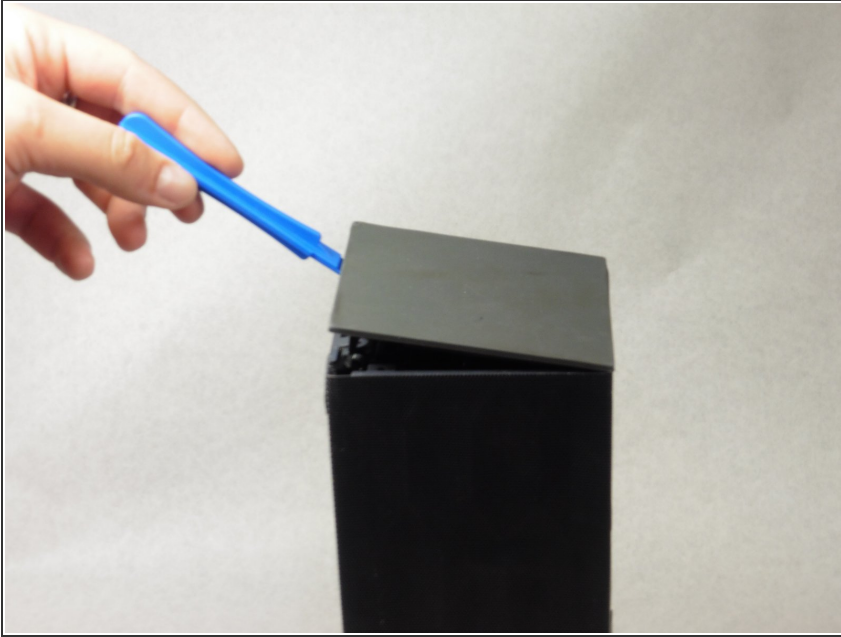
- [iFixit Opening Tools](#) (1)
- [T6 Torx Screwdriver](#) (1)



### PARTS:

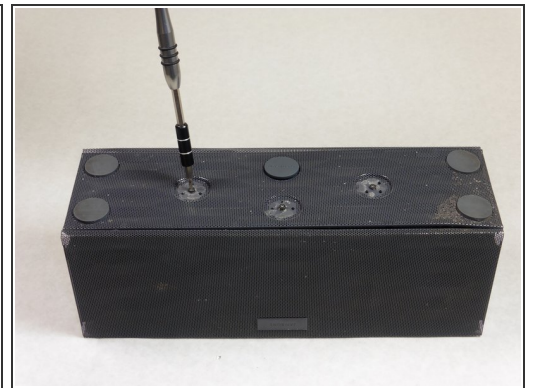
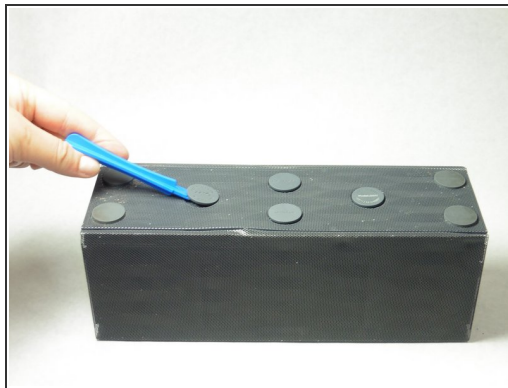
- [Jawbone Big Jambox Replacement Battery](#) (1)

## Step 1 — Outer Case



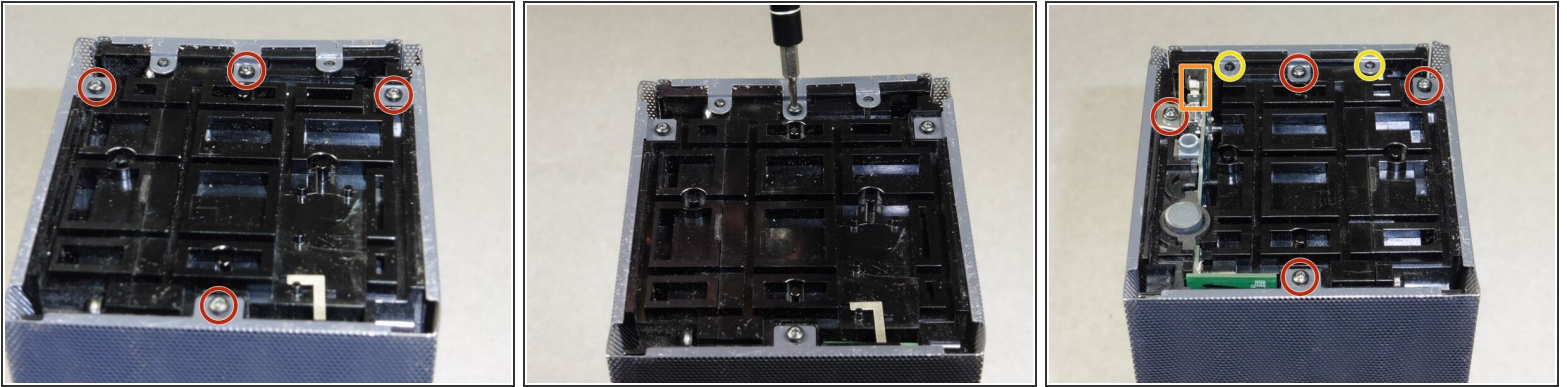
- Remove both end caps by putting a plastic opening tool in the center of the seam. Work around the edges to pry the end caps off completely.
- ⓘ Due to interior clips holding the end caps in place, use caution when applying force.

## Step 2



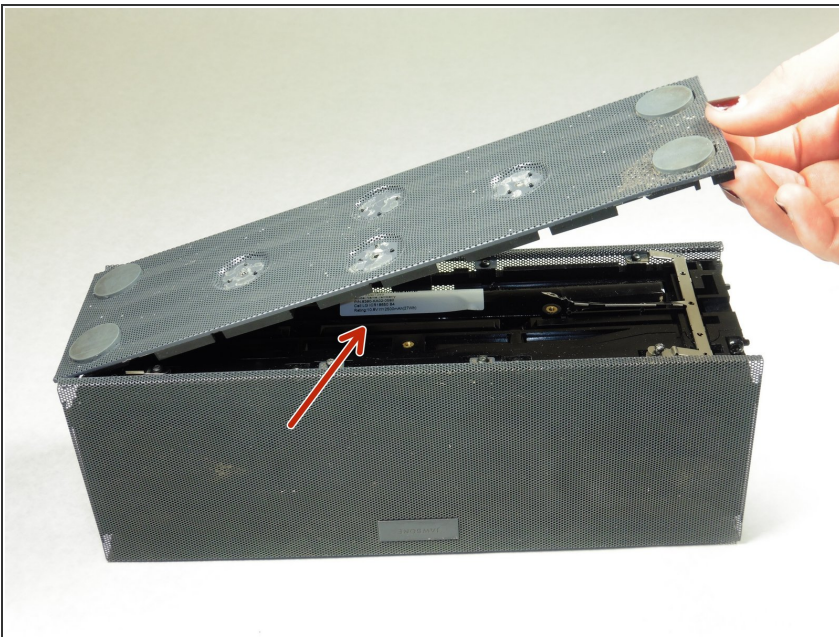
- Turn the Jambox upside down. Peel the indicated rubber tabs off, using a plastic opening tool if necessary.
- ⓘ You may want to only take the tabs half way off to avoid re-gluing when reassembling.
- Remove the three T6, 7.0 mm screws under each rubber tab.
- ✦ Because the screws are a different length, set the screws aside.

### Step 3



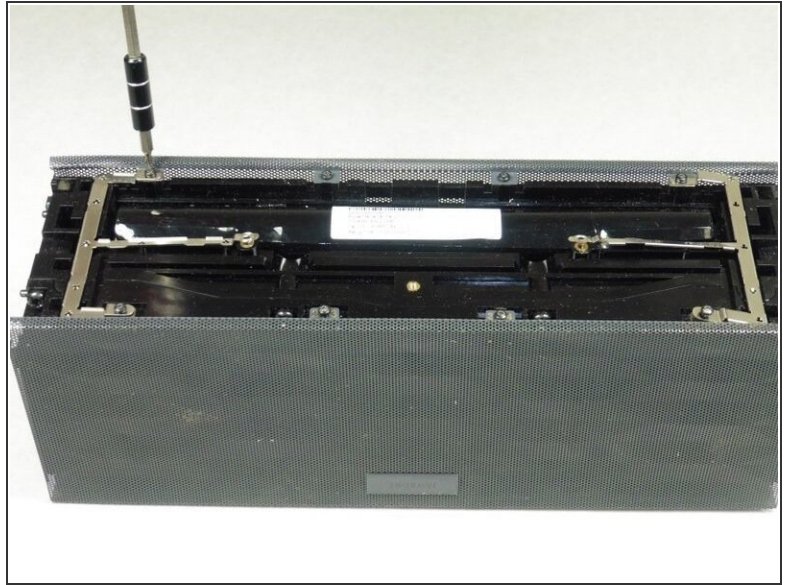
- With the Jawbone logo facing towards you and with correct orientation, place the Jambox with the left end cap facing upward.
- Unscrew indicated T6 9.7 mm screws.
- Gently loosen the tabs from their anchor points so the bottom may be removed.
- Flip the Jambox so the other end cap is facing up. The USB cable is on this side (metal grounding clip, indicated in orange). Repeat the above two steps.

### Step 4



- Pry up the bottom panel by lifting from the device.
- Pull the bottom up. This may take a bit of force as the bottom is glued to device.
- Once removed, the battery will now be visible.

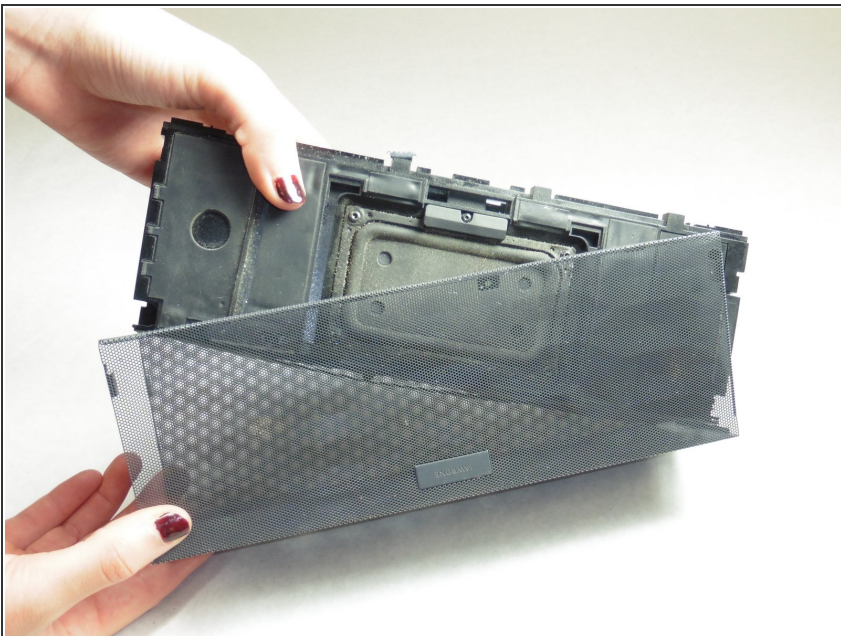
## Step 5



**i** Before unscrewing, take a picture of the top view. That way, when you're reassembling the device, you'll know the orientation of the metal grounding plates.

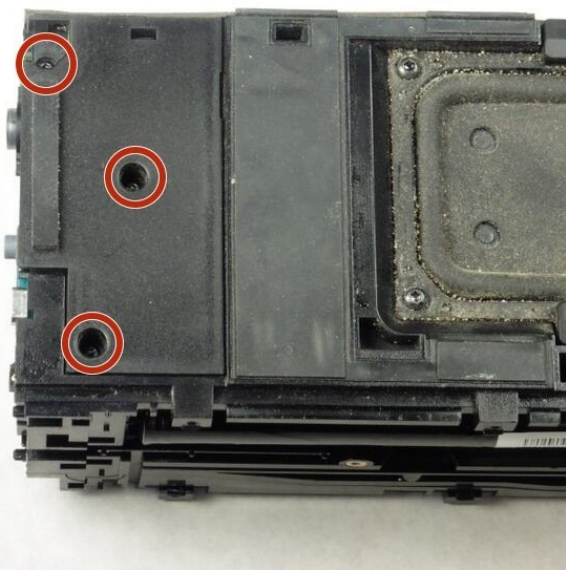
- Unscrew the eight indicated T6 9.8 mm screws. Remove metal grounding plates.

## Step 6



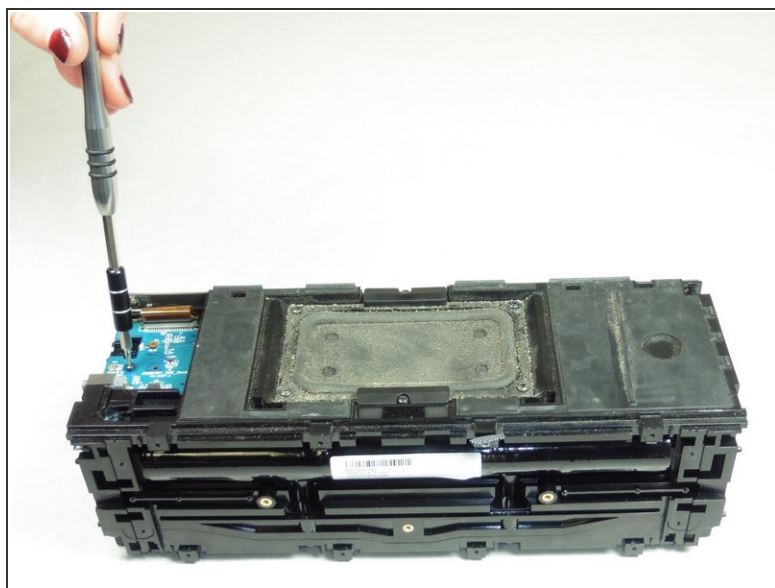
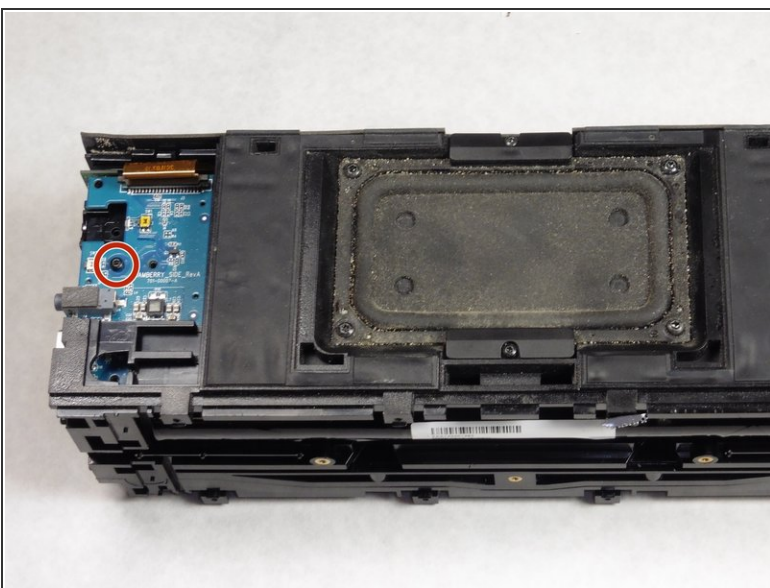
- Once all eight screws are removed, pry the sides of the Jambox to lift the body from it's shell.

## Step 7



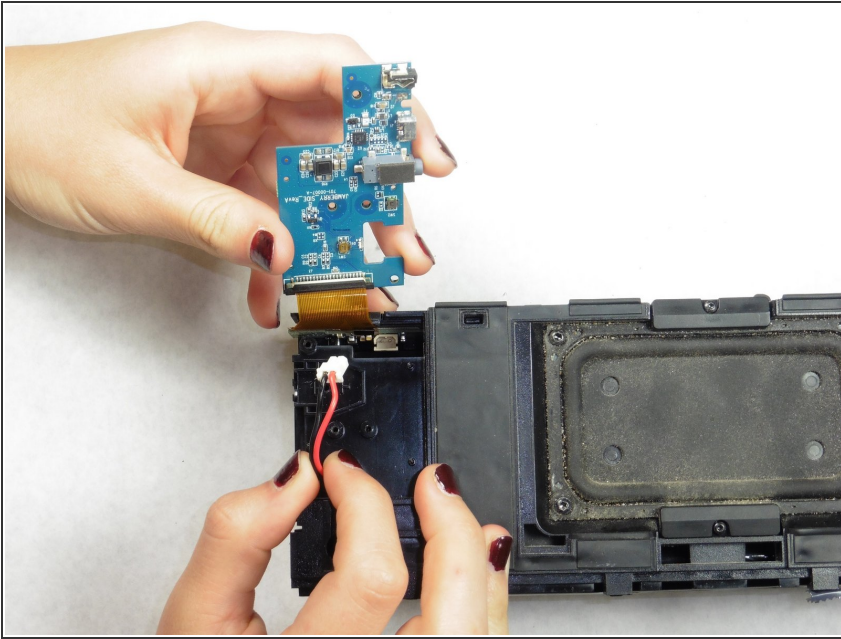
- With the battery facing forward, remove the three indicated T6 9.5 mm screws.
- Once the screws are removed, lift up the small plastic plate, revealing the auxiliary board underneath.

## Step 8 — Battery



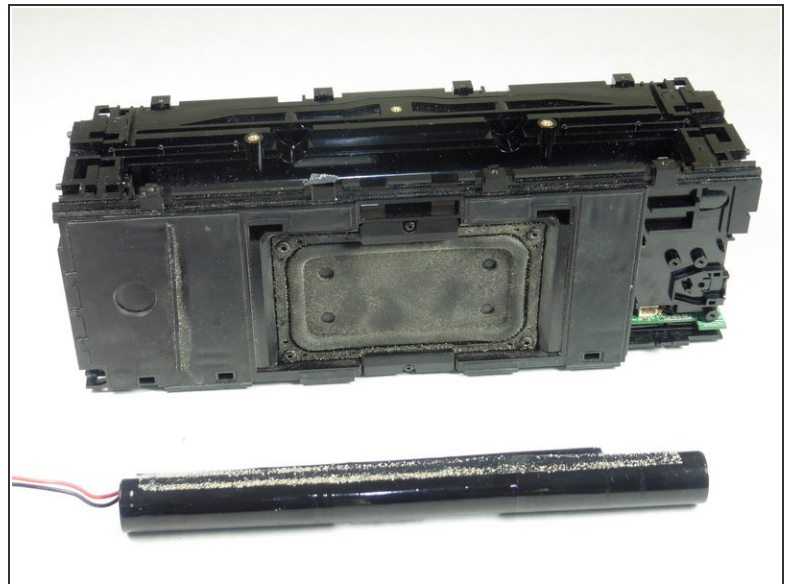
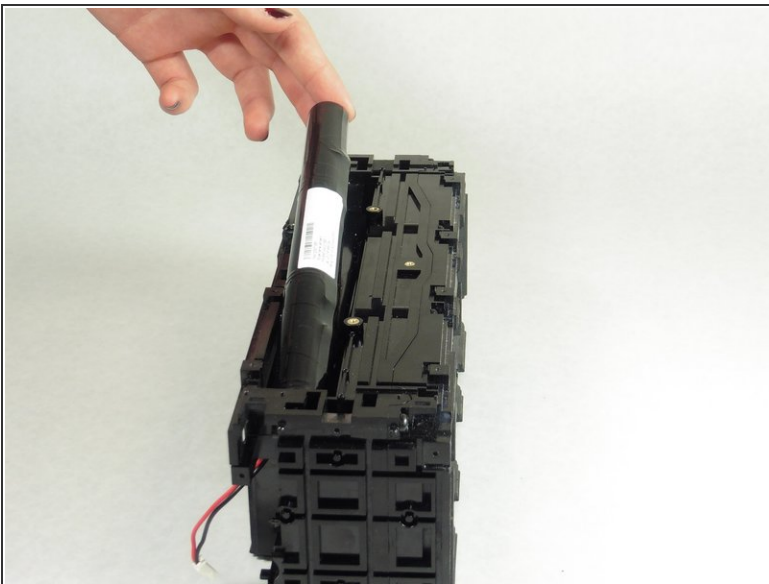
- Remove the indicated T6, 7.4mm screw holding the auxiliary board in place.
- Carefully lift the circuit board up and off to the side.

## Step 9



- Pull on the red and black cables under the auxiliary board to disconnect the battery.

## Step 10



- The battery is connected to the Jambox by double stick tape. Use your finger to pry out the battery.
- Place a new battery in the old battery's place. Reverse these steps to connect the new battery.
- ⓘ When plugging in the new battery, ensure the red and black wires are separated around pegs so they are not pinched when the auxiliary board is replaced.

This document was generated on 2020-03-11 01:42:30 PM (MST).

To reassemble your device, follow these instructions in reverse order.