



Jawbone MINI JAMBOX Battery Replacement

This guide will demonstrate how to safely remove and replace the JAMBOX's battery.

Written By: Kevin Ikeda



INTRODUCTION

The battery is one of the most fundamental components to the JAMBOX MINI. It is used to power the device. Replacing it is very difficult and should only be attempted if absolutely necessary.

TOOLS:

- [Metal Spudger](#) (1)
 - [Soldering Iron](#) (1)
 - [T6 Torx Screwdriver](#) (1)
-

Step 1 — Outer Case



- Using the standard metal spudger, begin by prying at the bottom of the plain rubber end cap (the end without the USB or auxiliary input).

Step 2



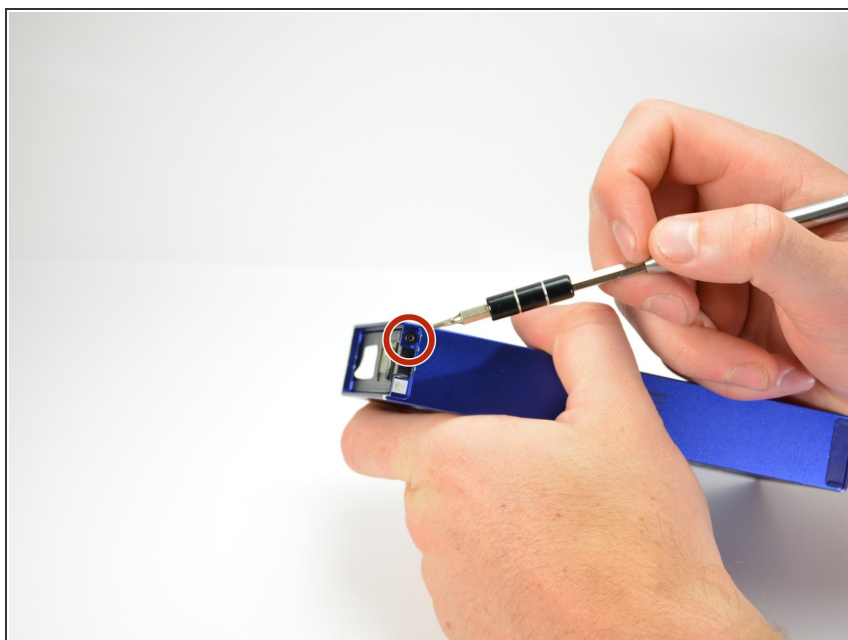
- Continue prying around the end panel, prying at different points until the entire panel is out of its seating.
- Carefully remove the end panel.
- ⓘ The tabs which connect the panel are on the short sides.
- ⚠ **WARNING:** you will likely cause cosmetic damage to the end cap.

Step 3



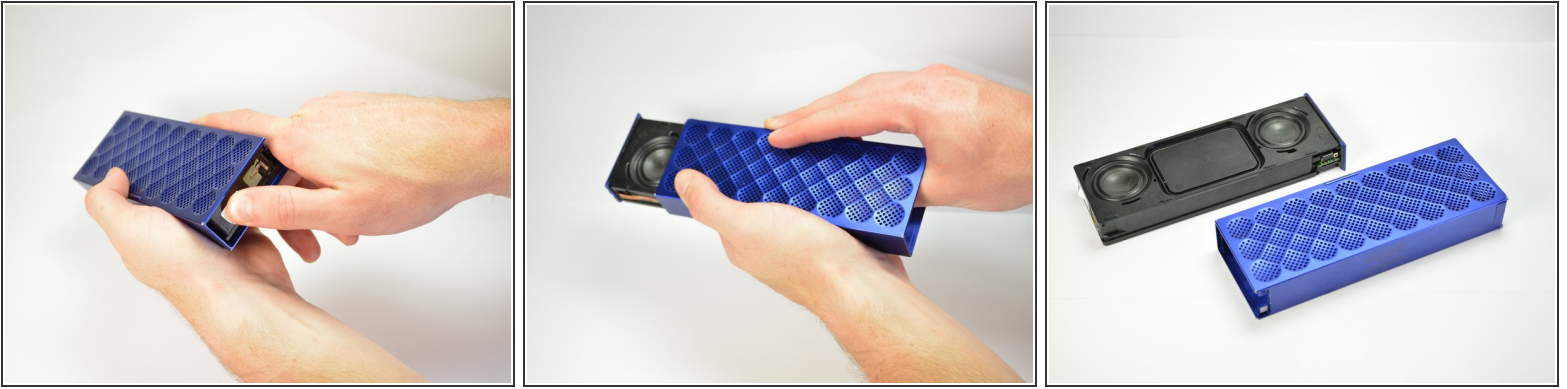
- Slide out the rubber foot located on the bottom of the case.

Step 4



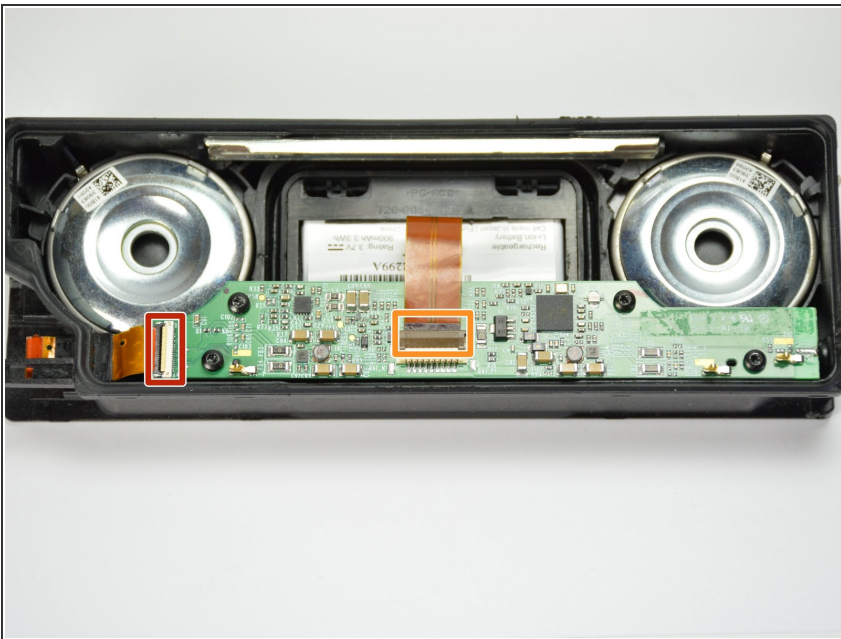
- Using a T6 bit, remove the flat topped 5mm screw located on the bottom of the casing, underneath the rubber foot.
- ★ This is the only flat topped screw in the speaker, so keep track of which one it is.

Step 5



- Push against the side without end cap to slide the internal components out of the case.
- While holding the metal outset casing with one hand, press on the black inner plastic casing with your thumb.
- ❗ It will be very difficult the first time. There is a rubber seal on the outside of the plastic inner case that creates a lot of friction with the metal outer case.

Step 6 — Motherboard



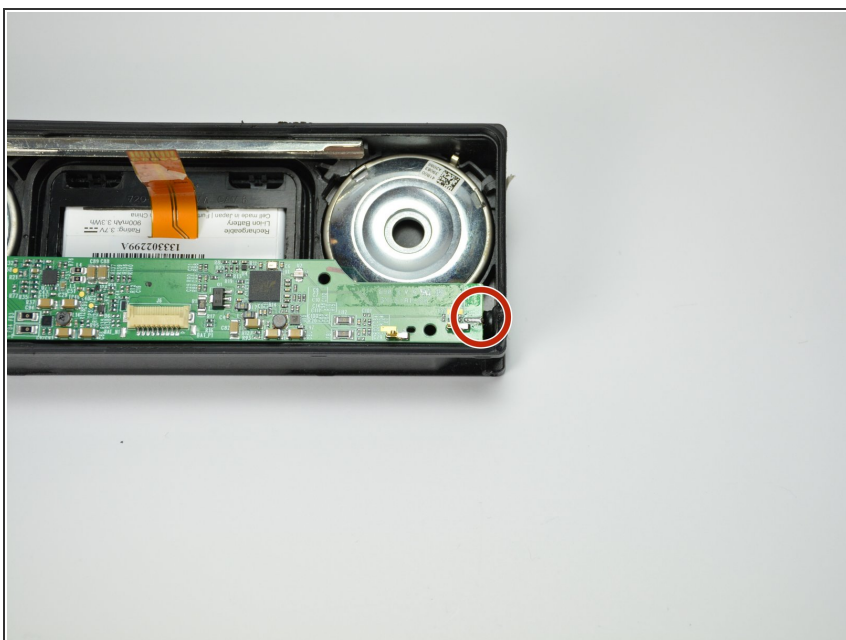
- Remove all connecting ribbons from the motherboard.
- One ZIF or "zero insertion force" ribbon connecting at the side.
- One standard ribbon connector in the middle (Note: this ZIF ribbon is lightly glued to the surface).

Step 7



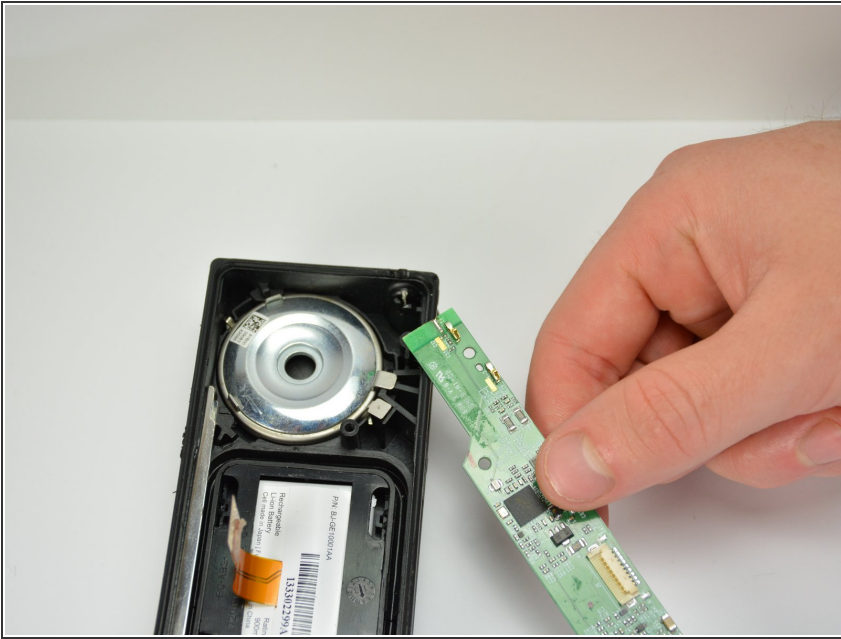
- Unscrew all four 5mm T6 screws holding the motherboard to the plastic case.
- ⓘ Unlike the flat top screw holding the metal housing, these screws are roundtop.

Step 8



- Desolder the grounding plug from the motherboard.
 - Make sure your soldering iron is tinned and carefully touch the tip of your iron to the grounding lug. Allow the the solder to liquify. While liquified, lift the motherboard off the grounding lug.
- ⚠ **WARNING:** Do not allow the solder to spill over and bridge any connection on the motherboard.
- ⓘ New to soldering? Look at iFixit's soldering guide [here](#).

Step 9



- Carefully lift the motherboard out of the plastic housing.

Step 10 — Battery



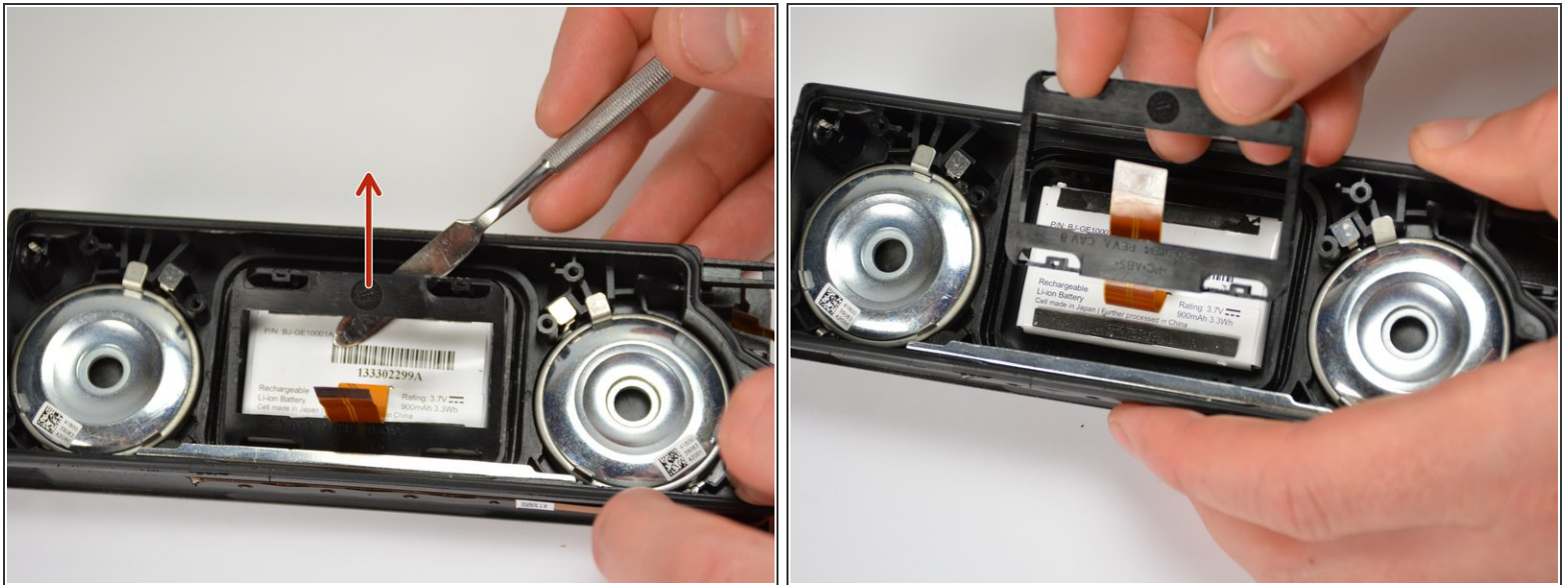
- Once the motherboard has been removed, insert a standard metal spudger in between the outer and inner casing of the battery housing.

Step 11



- With the metal spudger in place, pry the inner plastic housing away from the outer housing.
- Four tabs lock the sides into place, but only two need to be unhinged to remove the battery housing.

Step 12



- After undoing the tabs on one side, pull up and away from the side that is still locked in place. This will remove the battery housing.
 - Once all of the tabs have been undone, the inner housing will pop out and the battery will be accessible.
- i** It may require some force to undo the last two tabs

Step 13



- There is a sticky adhesive on the bottom of the battery that keeps it in place. Insert a metal spudger under the side of the battery and gently begin to pry the battery away from the base.

Step 14



- Once the battery has been removed, it can be replaced.
- Once the new battery is in place, snap the inner housing back into its locked position.

To reassemble your device, replace the battery and snap the inner casing back into place. Then do the remaining steps in reverse order.