



Jawbone MINI JAMBOX Motherboard Replacement

This guide walks you through the steps to remove the motherboard from the plastic housing.

Written By: Liam McDonnell



INTRODUCTION

While this guide is essential to replacing many parts on the Jawbone MINI JAMBOX, it requires an advanced level of technical knowledge. Only attempt to remove the motherboard if it is absolutely necessary.



TOOLS:

- [Metal Spudger](#) (1)
 - [T6 Torx Screwdriver](#) (1)
 - [Soldering Iron](#) (1)
-

Step 1 — Outer Case



- Using the standard metal spudger, begin by prying at the bottom of the plain rubber end cap (the end without the USB or auxiliary input).

Step 2



- Continue prying around the end panel, prying at different points until the entire panel is out of its seating.
- Carefully remove the end panel.
- ⓘ The tabs which connect the panel are on the short sides.
- ⚠ **WARNING:** you will likely cause cosmetic damage to the end cap.

Step 3



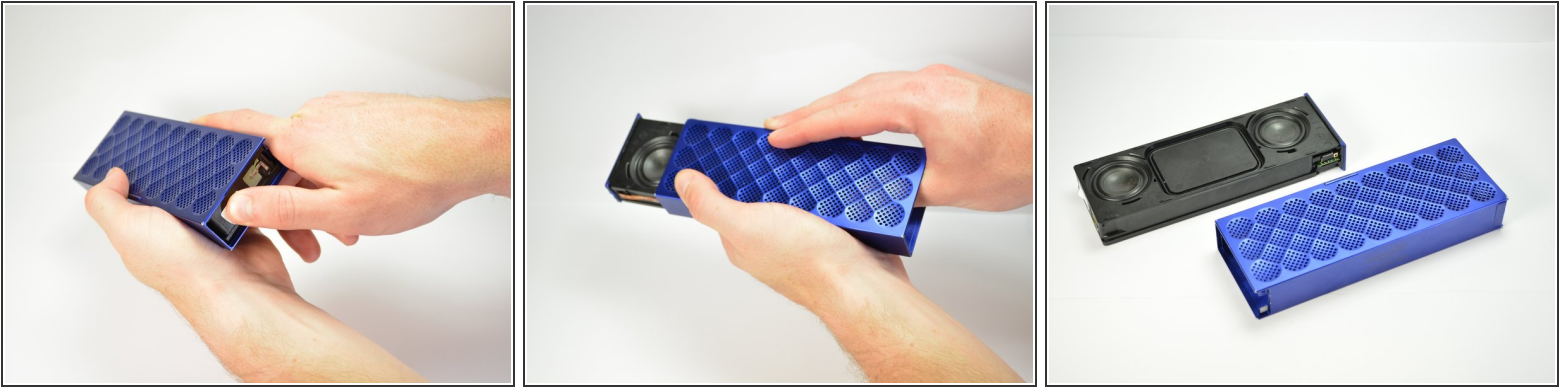
- Slide out the rubber foot located on the bottom of the case.

Step 4



- Using a T6 bit, remove the flat topped 5mm screw located on the bottom of the casing, underneath the rubber foot.
- ★ This is the only flat topped screw in the speaker, so keep track of which one it is.

Step 5



- Push against the side without end cap to slide the internal components out of the case.
- While holding the metal outset casing with one hand, press on the black inner plastic casing with your thumb.
- ⓘ It will be very difficult the first time. There is a rubber seal on the outside of the plastic inner case that creates a lot of friction with the metal outer case.

Step 6 — Motherboard



- Remove all connecting ribbons from the motherboard.
- One ZIF or "zero insertion force" ribbon connecting at the side.
- One standard ribbon connector in the middle (Note: this ZIF ribbon is lightly glued to the surface).

Step 7



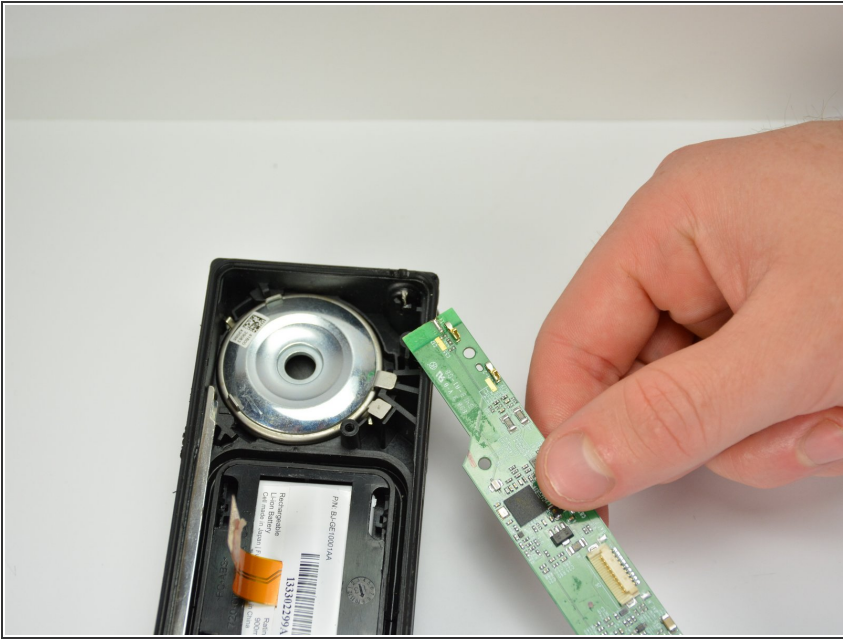
- Unscrew all four 5mm T6 screws holding the motherboard to the plastic case.
- ⓘ Unlike the flat top screw holding the metal housing, these screws are roundtop.

Step 8



- Desolder the grounding plug from the motherboard.
 - Make sure your soldering iron is tinned and carefully touch the tip of your iron to the grounding lug. Allow the the solder to liquify. While liquified, lift the motherboard off the grounding lug.
- ⚠ **WARNING:** Do not allow the solder to spill over and bridge any connection on the motherboard.
- ⓘ New to soldering? Look at iFixit's soldering guide [here](#).

Step 9



- Carefully lift the motherboard out of the plastic housing.

To reassemble your device, follow these instructions in reverse order.