



Jawbone MINI JAMBOX Outer Case Replacement

Summary of how to remove the inner component set from the outer metal casing. This must precede any other repair or replacement.

Written By: Noah Sadler



INTRODUCTION

The Jawbone MINI JAMBOX has an aluminum unibody outer shell. You must remove this outer shell in order to replace the inner components.

TOOLS:

- [Metal Spudger](#) (1)
 - [T6 Torx Screwdriver](#) (1)
-

Step 1 — Outer Case



- Using the standard metal spudger, begin by prying at the bottom of the plain rubber end cap (the end without the USB or auxiliary input).

Step 2



- Continue prying around the end panel, prying at different points until the entire panel is out of its seating.
- Carefully remove the end panel.
- ⓘ The tabs which connect the panel are on the short sides.
- ⚠ **WARNING:** you will likely cause cosmetic damage to the end cap.

Step 3



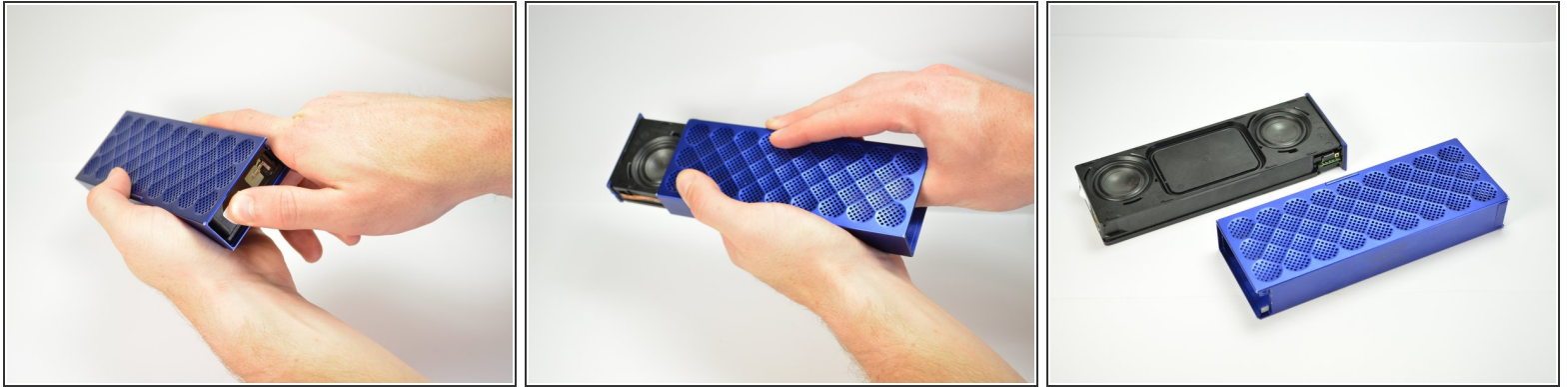
- Slide out the rubber foot located on the bottom of the case.

Step 4



- Using a T6 bit, remove the flat topped 5mm screw located on the bottom of the casing, underneath the rubber foot.
- ★ This is the only flat topped screw in the speaker, so keep track of which one it is.

Step 5



- Push against the side without end cap to slide the internal components out of the case.
- While holding the metal outset casing with one hand, press on the black inner plastic casing with your thumb.
- ❗ It will be very difficult the first time. There is a rubber seal on the outside of the plastic inner case that creates a lot of friction with the metal outer case.

To reassemble your device, follow these instructions in reverse order.