



Jawbone MINI JAMBOX Side Button Assembly Replacement

This guide will walk you through the steps to safely clean the side button assembly on the Jawbone MINI JAMBOX.

Written By: Liam McDonnell



INTRODUCTION

The side buttons on the Jawbone MINI JAMBOX control its power and bluetooth pairing. With excessive use or use in dirty conditions, the buttons can begin to stick. This issue should be resolved by thoroughly cleaning the button.



TOOLS:

- [Metal Spudger](#) (1)
 - [T6 Torx Screwdriver](#) (1)
 - [Compressed Air](#) (1)
-

Step 1 — Outer Case



- Using the standard metal spudger, begin by prying at the bottom of the plain rubber end cap (the end without the USB or auxiliary input).

Step 2



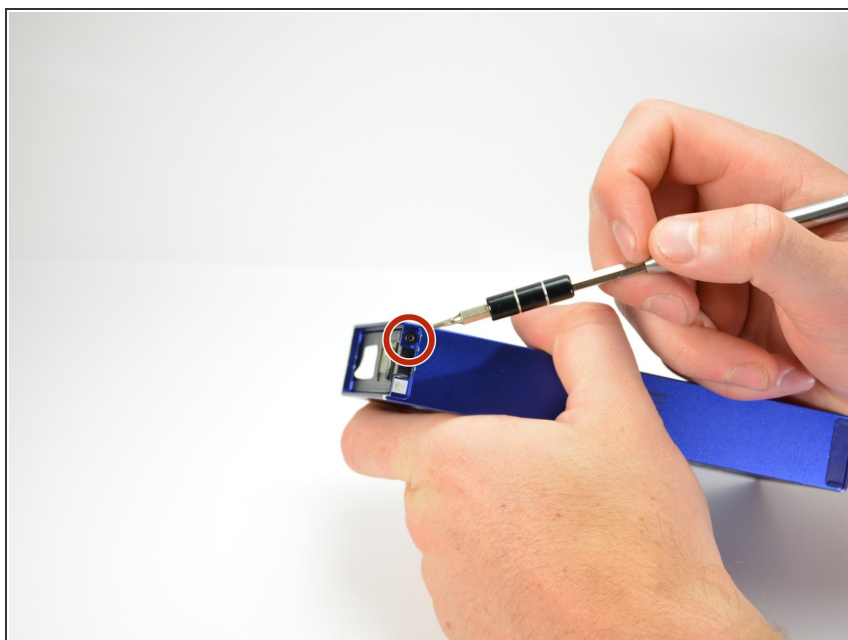
- Continue prying around the end panel, prying at different points until the entire panel is out of its seating.
- Carefully remove the end panel.
- ⓘ The tabs which connect the panel are on the short sides.
- ⚠ **WARNING:** you will likely cause cosmetic damage to the end cap.

Step 3



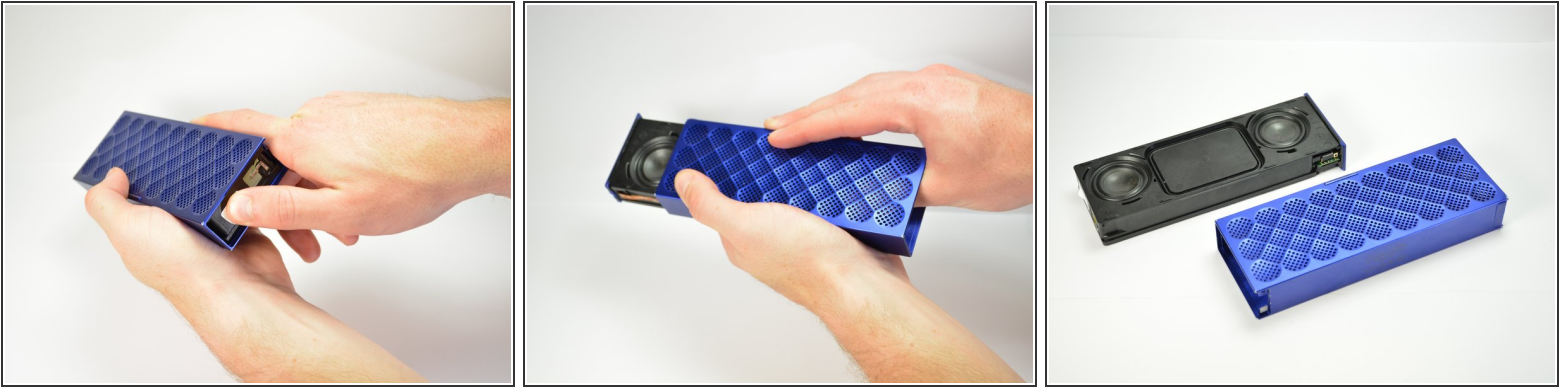
- Slide out the rubber foot located on the bottom of the case.

Step 4



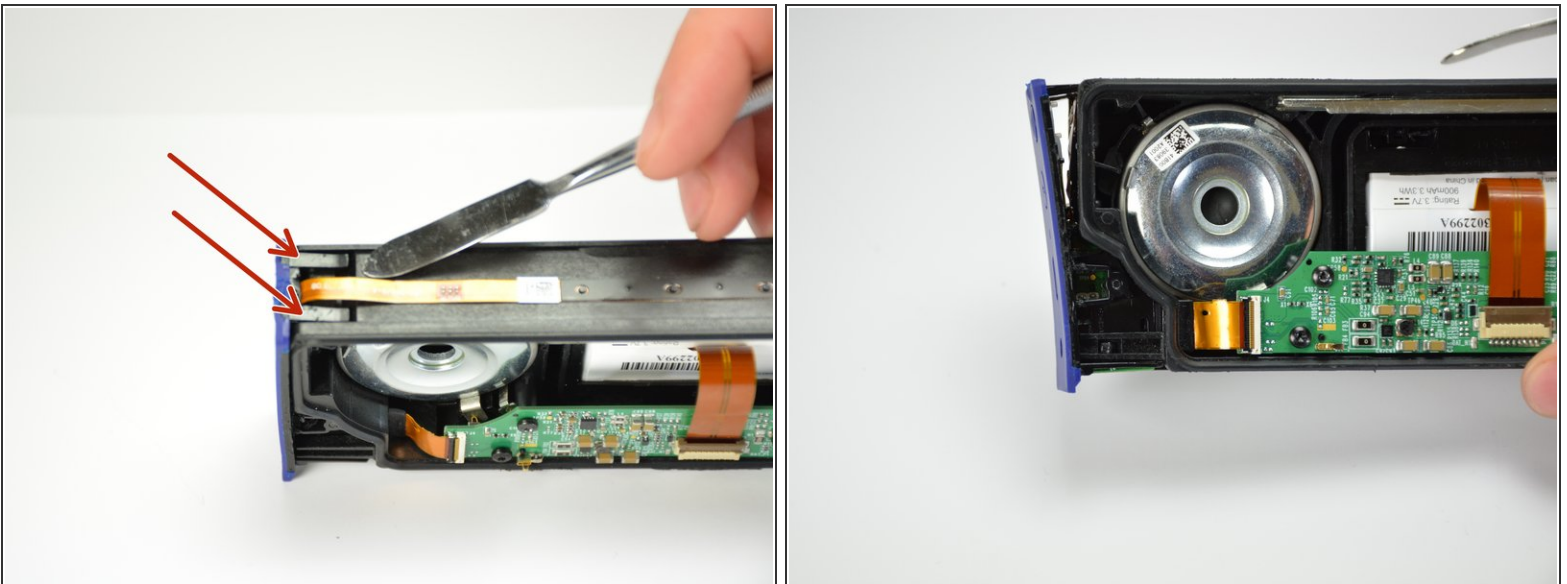
- Using a T6 bit, remove the flat topped 5mm screw located on the bottom of the casing, underneath the rubber foot.
- ★ This is the only flat topped screw in the speaker, so keep track of which one it is.

Step 5



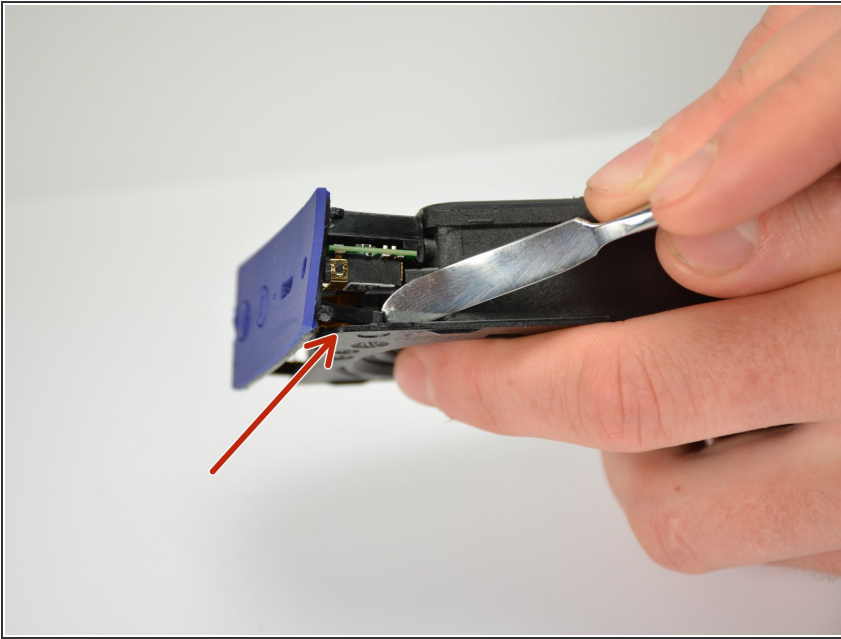
- Push against the side without end cap to slide the internal components out of the case.
- While holding the metal outset casing with one hand, press on the black inner plastic casing with your thumb.
- ❗ It will be very difficult the first time. There is a rubber seal on the outside of the plastic inner case that creates a lot of friction with the metal outer case.

Step 6 — Side Buttons Assembly



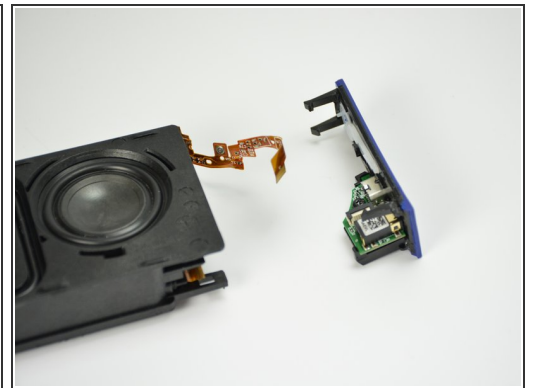
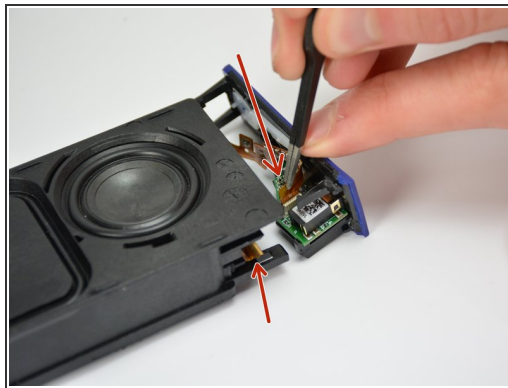
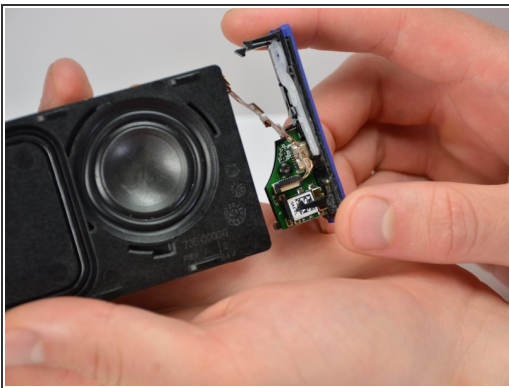
- Using the standard metal spudger, carefully pry up the top 2 plastic tabs which hold the exterior button and port cover onto the interior plastic frame.

Step 7



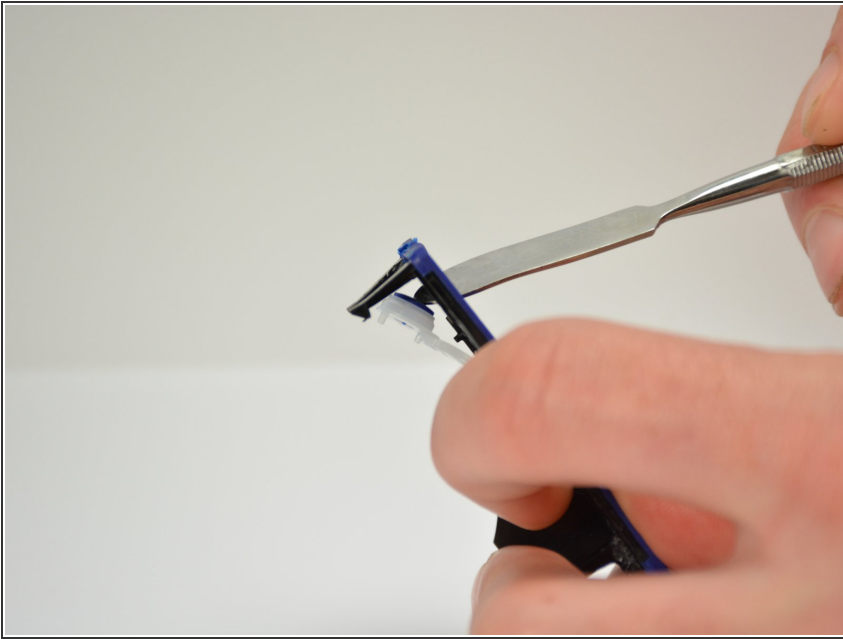
- Using the standard metal spudger, pry up the bottom 2 tabs attaching the other side of the button panel.
- ⓘ It should come off after prying up the first tab.

Step 8



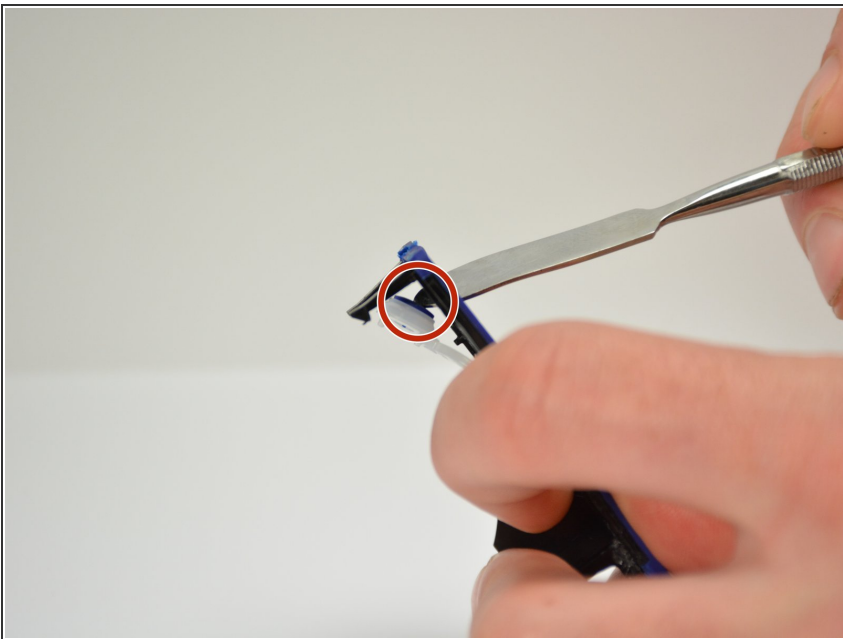
- Carefully lift out the end panel.
- Unplug both the connection ribbon and the ZIF or "zero insertion force" ribbon using tweezers or your hands.
- ⓘ There is a bit of glue to hold the connection ribbon down.

Step 9



- Using the spudger, push the button in and create a small gap between the outside structure and the button.

Step 10



- Using a computer duster, blow any contaminants out from the button junction.
 - Using a q-tip and cleaner, wipe off any stickiness from the buttons, ensuring to prevent excessive moisture.
- ✦ Alternate Reassembly required, read on.

To reassemble your device, follow steps 1 through 5 in reverse order.