



# **Jazz Digi-Stix JDC11 Board/Microphone/Battery Compartment Replacement**

Install the board, microphone, and battery compartment.

Written By: Katelyn Fry



---

## INTRODUCTION

This guide will aid the user in the replacement of the board, microphone, or battery compartment for this device. Note that because of the way the three different parts are connected, if one device needs to be replaced, all three parts will have to be replaced. If the user wishes to replace just one of the three devices, skills in soldering and soldering equipment would be needed.



### TOOLS:

- [Spudger](#) (1)
  - [Tweezers](#) (1)
  - [Phillips #00 Screwdriver](#) (1)
-

## Step 1 — Battery



- Flip the device so that the bottom is facing upwards. Using thumb, push the tab on the bottom in the direction indicated by the arrow and then lift the unhinged part of the tab.

## Step 2



- Tilt device so that batteries slide out.

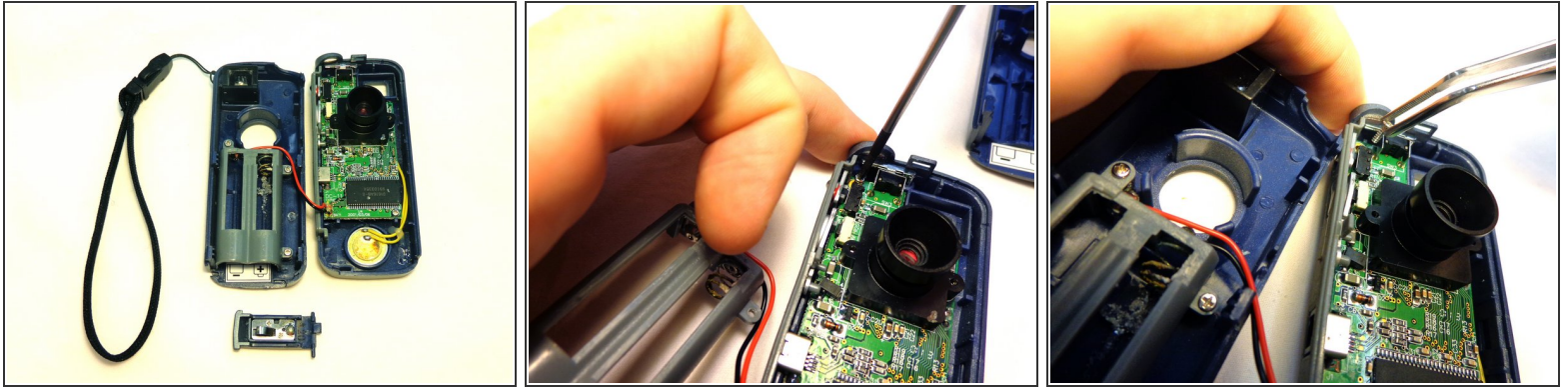



### Step 3 — Lens



- Carefully insert the flat end of the spudger into the seam on the top side of the device. Carefully twist the spudger to open the device. Repeat this step at incremental locations around the seam of the device until the two case halves separate.
- Before completely separating the two halves, separate the case from the battery compartment cover, pulling the case apart. Take care not to break the plastic hinge as the battery compartment cover is removed.

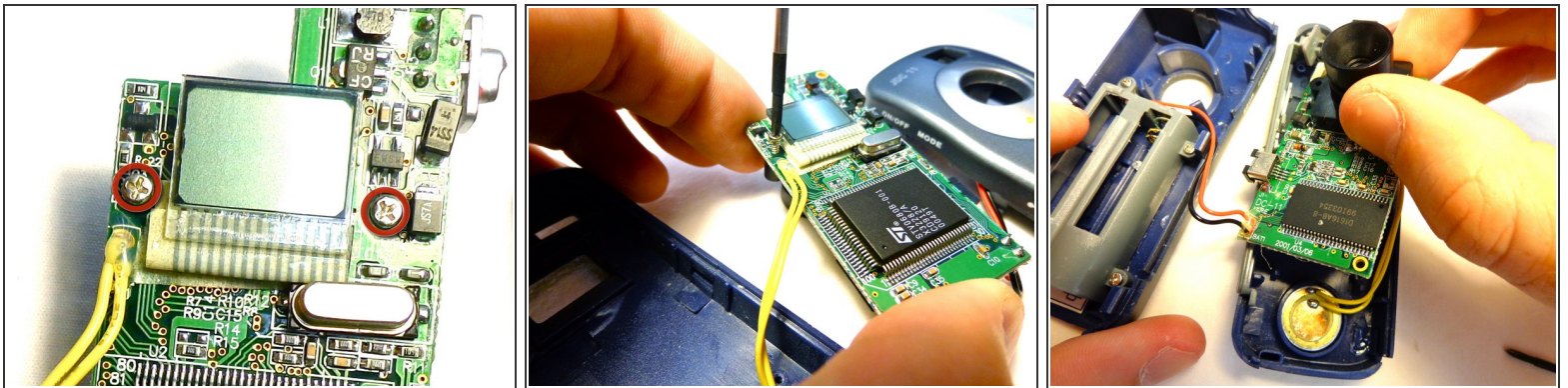
## Step 4



 Make sure to take care in prying case apart. There are two wires (one red and one black) that could get disconnected from the motherboard.

- Gently separate the two halves of the device.
- To remove the circuit board from the right section of the device, unscrew the two 5.6 mm Phillips #00 screws.
- When the screws have been fully unscrewed, use the tweezers to remove them from the device.

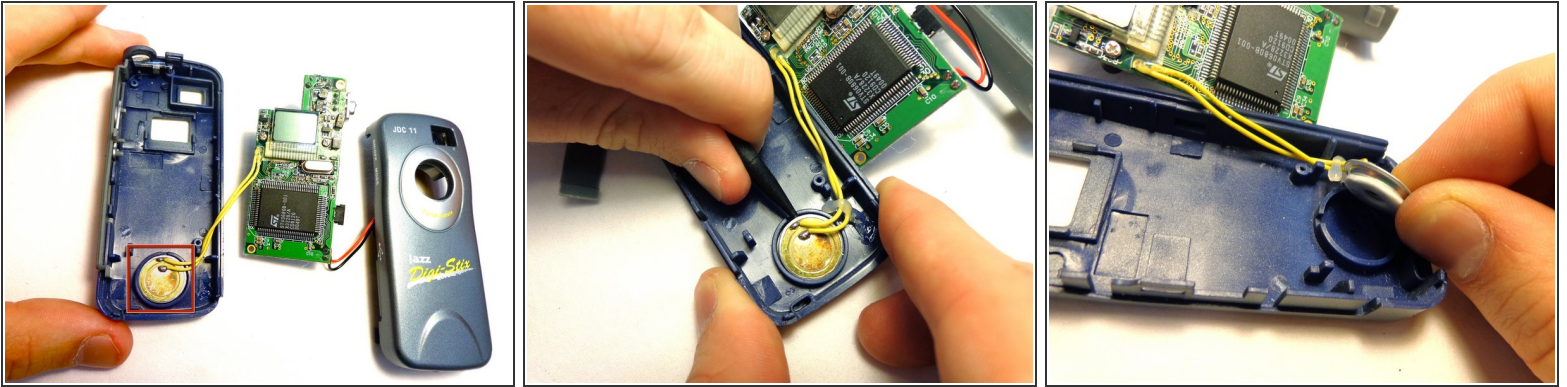
## Step 5



- Turn the device over so that the lens is facing downward. Take care not to detach any wires during this step.
- Locate and unscrew the two 5.6 mm Phillips #00 screws holding the lens to the board.
- Turn the device back over so that the lens faces upward, and carefully remove the lens from the board.

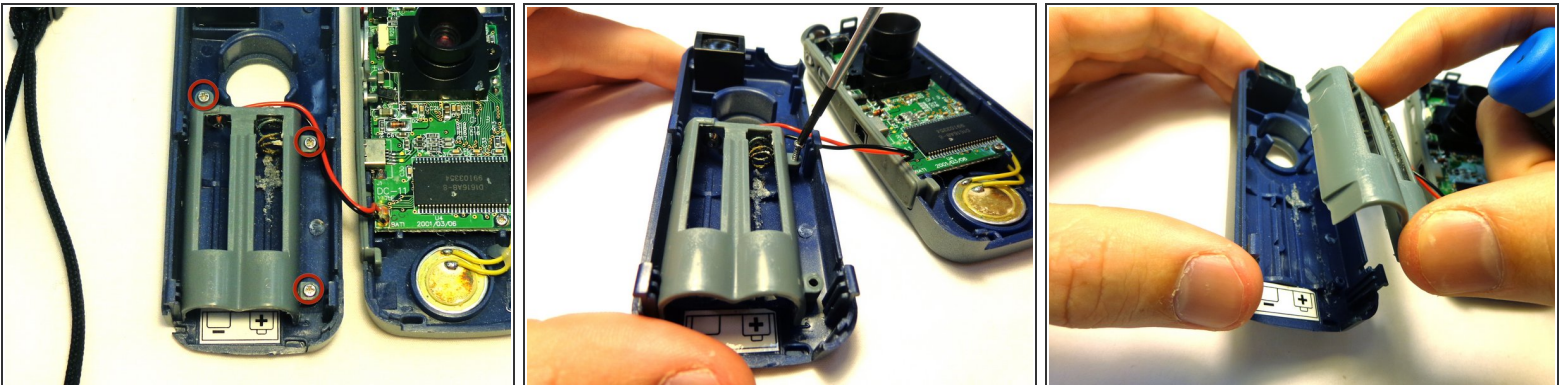


## Step 6 — Board/Microphone/Battery Compartment



- To remove the microphone from the case, insert the tip of the spudger under the microphone's edge and pry it away from the case.

## Step 7



- Unscrew the three 5.6 mm Phillips #00 screws that connect the battery compartment to the case.
- Remove the battery compartment from the case of the device.

To reassemble your device, follow these instructions in reverse order.