



# Jazz Digi-Stix JDC11 Capture Button Replacement

This guide will help in the installation of the capture button of the camera.

Written By: Katelyn Fry



---

## INTRODUCTION

This guide will aid the user in the installation of the capture button for this device. The capture button is the button that is pressed in order to take a picture. This device is to be used if for some reason the capture button breaks or is pushed into the device.



### TOOLS:

- [Phillips #00 Screwdriver](#) (1)
  - [Spudger](#) (1)
  - [Tweezers](#) (1)
-

## Step 1 — Battery



- Flip the device so that the bottom is facing upwards. Using thumb, push the tab on the bottom in the direction indicated by the arrow and then lift the unhinged part of the tab.

## Step 2



- Tilt device so that batteries slide out.

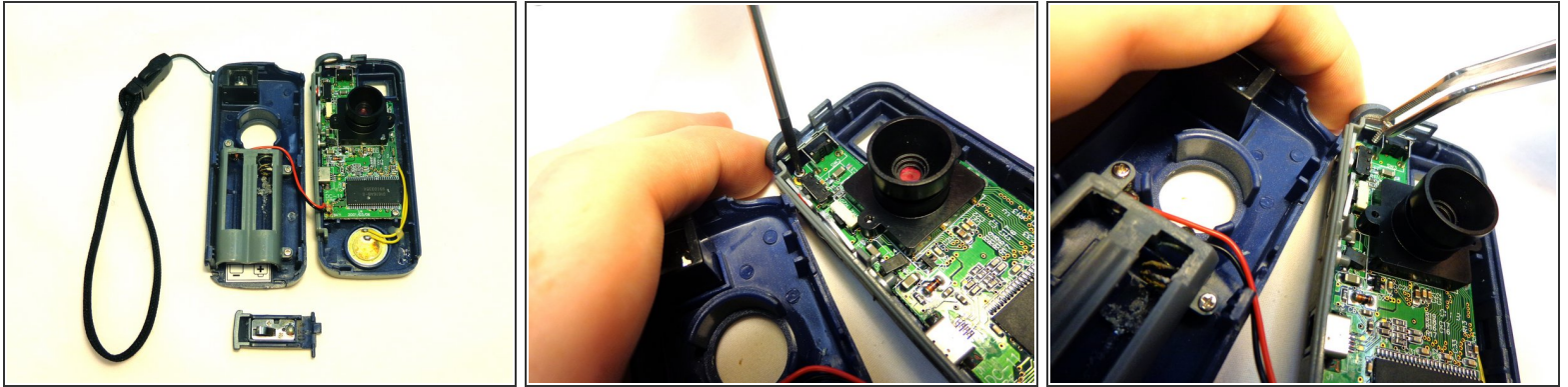
### Step 3 — Capture Button




- Carefully insert the flat end of the spudger into the seam on the top side of the device. Carefully twist the spudger to open the device. Repeat this step at incremental locations around the seam of the device until the two case halves separate.
- Before completely separating the two halves, separate the case from the battery compartment cover, pulling the case apart. Take care not to break the plastic hinge as the battery compartment cover is removed.



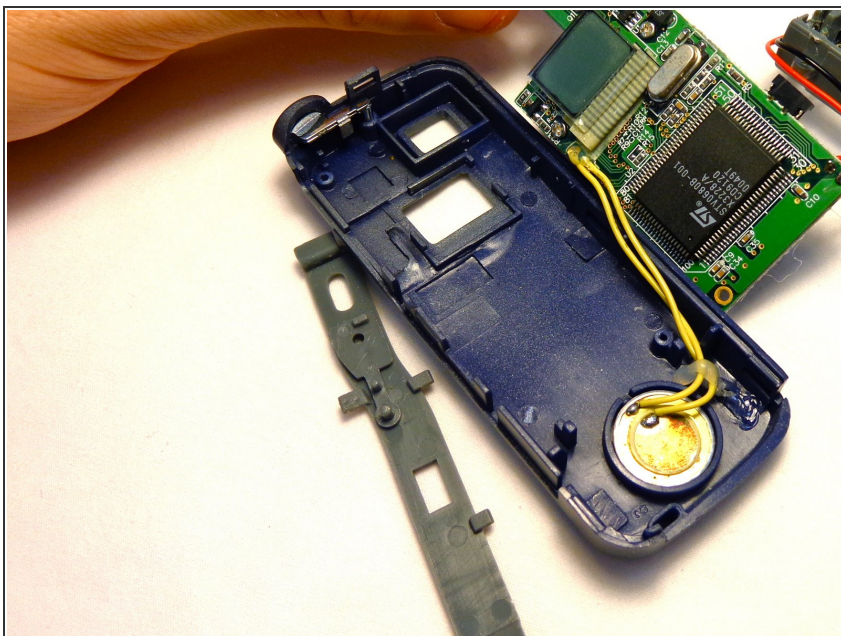
## Step 4



 There are two wires (one red and one black) that could get disconnected from the motherboard when prying the case apart.

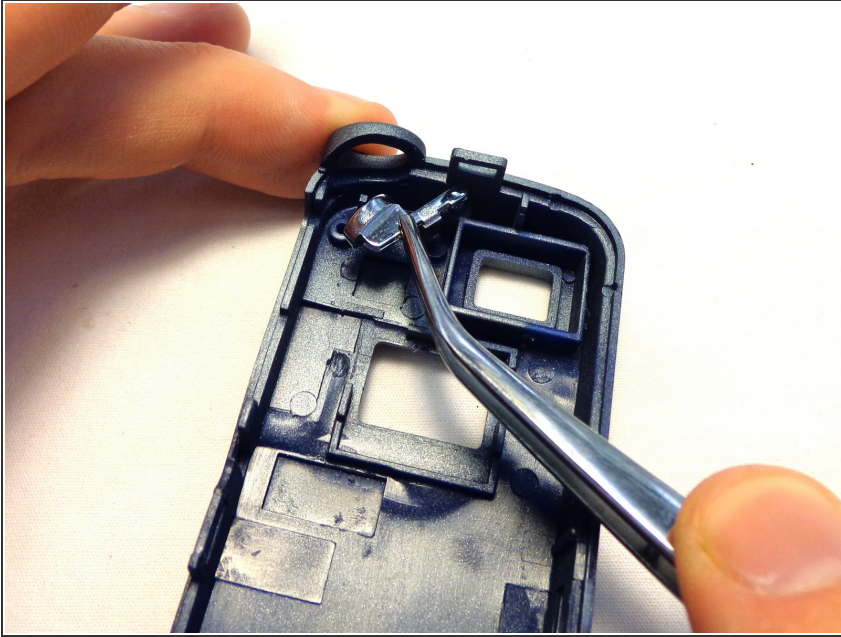
- Gently separate the two halves of the device.
- To remove the circuit board from the right section of the device, unscrew the two 5.6 mm Phillips #00 screws.
- When the screws have been fully unscrewed, use the tweezers to remove them from the device.

## Step 5



- Carefully separate the grey side bar from the case and set it aside.

## Step 6



- Use the tweezers to grasp the bottom of the capture button. Pull the capture button away from the case and set it aside.

To reassemble your device, follow these instructions in reverse order.