



Jazz Digi-Stix JDC11 Viewer Replacement

Install the viewer of the camera.

Written By: Katelyn Fry



INTRODUCTION

This guide will aid the user in the installation of the viewer for this device. The viewer is eyepiece that the user looks through in order to take a photograph. This guide will need to be used if the viewer is scratched or cracked. Be sure to put the viewer in the correct way when putting the new part in.



TOOLS:

- [Spudger](#) (1)



PARTS:

- [Viewer](#) (1)

Step 1 — Battery



- Flip the device so that the bottom is facing upwards. Using thumb, push the tab on the bottom in the direction indicated by the arrow and then lift the unhinged part of the tab.

Step 2



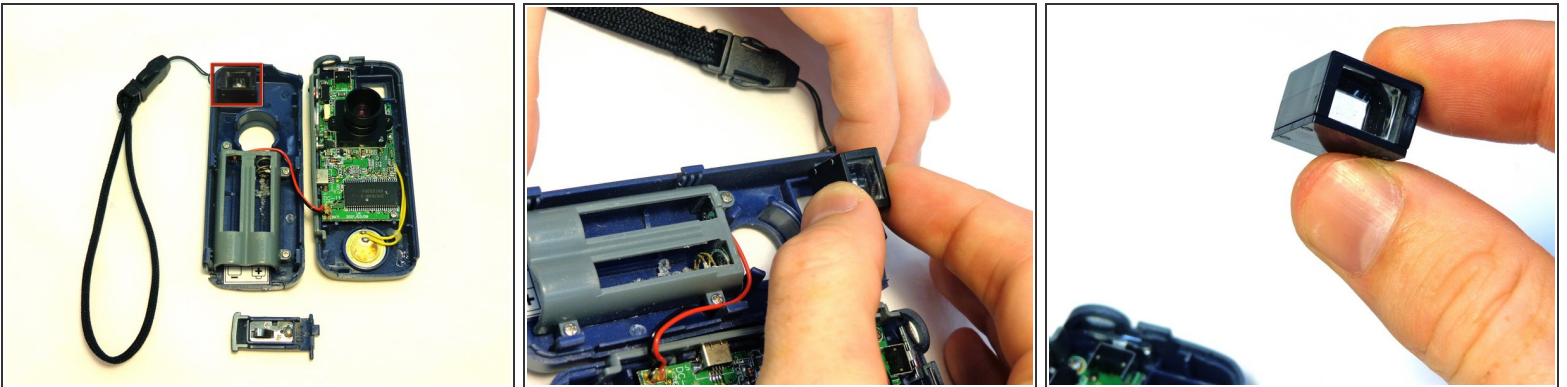
- Tilt device so that batteries slide out.

Step 3 — Viewer



- Carefully insert spudger into the seam on the top side of the device and tilt and twist the spudger to open the device. Work it around the device until the two case halves separate.
 - Before completely separating the two halves, grab the tab on the bottom of the device and pull the two halves of the case away from the hinged part of the tab so as not to break the plastic rods.
- ⚠ When separating the two halves of the case, be careful not to disconnect the various wires attached to the motherboard and the battery case.

Step 4



- Pull the viewer free from the left hand side of the case.

To reassemble your device, follow these instructions in reverse order.